



FlowPad - Smart choice for brighter tunnels

FlowPad

Municipalities value energy savings more than ever, as energy price hikes put increasing pressure on budgets. Tunnel lighting consumes substantial energy, so large-scale upgrades to energy-efficient LED tunnel lights are essential to cities' cost-saving efforts. FlowPad has been upgraded to minimize costs while maximizing efficacy, safety, and functionality. And the best part — FlowPad offers big light window with professional photometric, so it ensures safe and comfortable lighting in tunnels. These tunnel lights not only look good, they also offer excellent performance. Future-proof technology combines with high efficacy, innovative design, and smart connectivity in a light that makes your tunnels look brighter and better.

Benefits

- High efficacy for energy savings and sustainability
- Quality components combined with durable design
- Big window with optimized efficiency and multiple light pattern controls
- Interact Ready. Can be paired with IoT systems and lighting applications
- Easy access to SPD, driver, and gear compartment

Features

- Six housing types covering up to 80Klm
- Typical 160lm/W, high lumen efficacy for energy saving
- Robust quality and reliability, 50Khrs lifetime @Ta50C Outdoor
- Operation temperature up to Ta55C Outdoor
- Professional optics for various applications, with big glass window
- DALI dimming interface and optional NEMA/Zhaga socket for system
- Tool-less maintenance for Driver box and SPD

FlowPad

Application

- City Tunnel
- Highway Tunnel
- Underpass
- Elevated road

Specifications

Material	Housing: extrusion aluminum and glass Driver box: sheet metal
Light Source	LED module
Installation	Ceiling mount Wall mount
Luminous flux	up to 80-84klm system flux
Correlated color temperature - CCT	2200K 2700K 3000K 4000K 5700K
Luminaire efficacy	160lm/W
Color Rendering index - CRI	70
Optical distribution	R-JP DTA DTA-WB DTS-WB DSM DTX2

Power	up to 510W
Mains Voltage	220-240V, 50/60Hz120-277V, 50/60Hz
Control system input	1-10V / StepDim / DALI / Coded mains / D4i
Dimming	PSR: 1-10V dimmable PSRD: StepDim PSD: DALI PSC: Coded mains SR: D4i
Performance ambient temperature Tq	Outdoor Ta50C
Operating Temperature range	Outdoor: - 40°C < Ta< 55°C
Accessories	Extendable cable
Ingress protection	IP66
Certification	CB/EMC

Versions



FlowPad Tunnel



FlowPad Tunnel



FlowPad Tunnel



FlowPad Tunnel

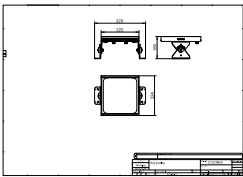
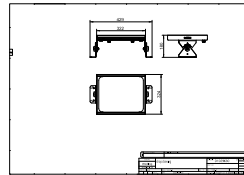
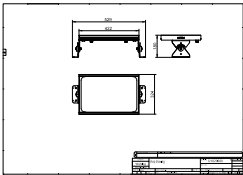
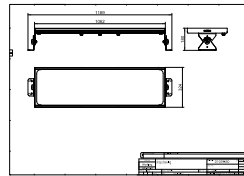
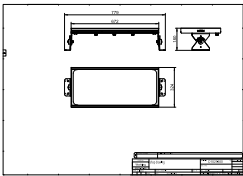
FlowPad

Versions



FlowPad Tunnel

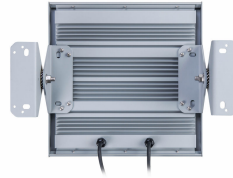
Dimensional drawing



Product details



FlowPad Tunnel



FlowPad Tunnel



FlowPad Tunnel



FlowPad Tunnel



FlowPad Tunnel



FlowPad Tunnel



FlowPad Tunnel



FlowPad Tunnel



FlowPad Tunnel



FlowPad Tunnel

General Information

Driver included	No
Number of gear units	-
Service tag	Yes

Light Technical

Luminaire light beam spread	148° x 88°
Light source color	740 neutral white
Correlated Color Temperature (Nom)	4000 K
Color rendering index (CRI)	70

Controls and Dimming

Dimmable	Yes
----------	-----

Mechanical and Housing

Optical cover type	Glass
Housing Color	Grey
Mech. impact protection code	IK08
Ingress protection code	IP66

Approval and Application

CE mark	Yes
Flammability mark	-
Glow-wire test	-

Light Technical

Order Code	Full Product Name	Luminous Flux
911401606709	BWP605 LED560/NW 340W DTA C2 C	55,600 lm
911401606309	BWP601 LED65/NW 40W DTA M C	6,500 lm
911401606509	BWP603 LED284/NW 170W DTA C	28,300 lm
911401606409	BWP602 LED170/NW 100W DTA C	17,000 lm
911401606809	BWP606 LED797/NW 480W DTA C2 C	79,700 lm

Operating and Electrical

Order Code	Full Product Name	Power Consumption
911401606709	BWP605 LED560/NW 340W DTA C2 C	340 W
911401606309	BWP601 LED65/NW 40W DTA M C	40 W
911401606509	BWP603 LED284/NW 170W DTA C	170 W

Order Code	Full Product Name	Power Consumption
911401606409	BWP602 LED170/NW 100W DTA C	100 W
911401606809	BWP606 LED797/NW 480W DTA C2 C	480 W

