

SB Waterproof WT068C G2 provides 3 sizes, standard and through wiring version and 2 CCTs to cater to different customer needs.

SB Waterproof WT068 G2

SB Waterproof WT068C G2 provides flexibility to customer to choose from 3 sizes, standard and through wiring version and 2 CCTs to cater to different customer needs.

Benefits

- Lifetime: 30,000 hrs@L70B50, 3 years warranty
- IP66, IK08
- Through wiring is the option to meet customer needs

Features

- 2 CCTs (NW & CW), 3 lengths (L600, L1200 and L1500), standard and through wiring versions
- High efficacy with 120lm/W
- Reliable with a long lifetime of 30,000 hrs L70
- IP66/IK08: water and dustproof

SB Waterproof WT068 G2

Application

- Parking Garages
- Offices

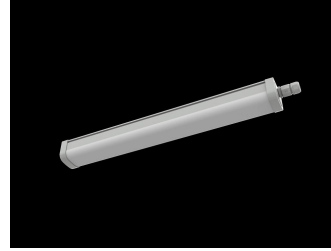
Versions



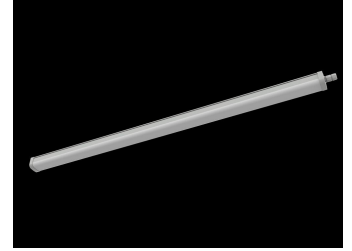
SB WATERPROOF



SB WATERPROOF

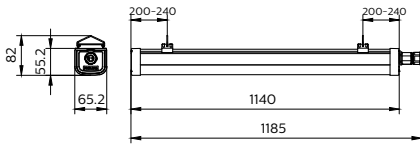


SB WATERPROOF

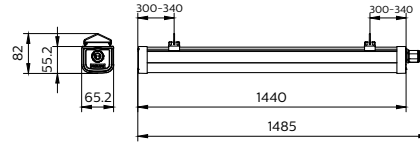


SB WATERPROOF

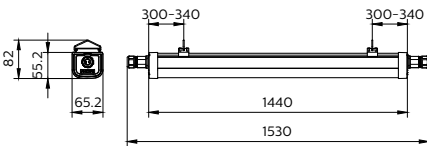
Dimensional drawing



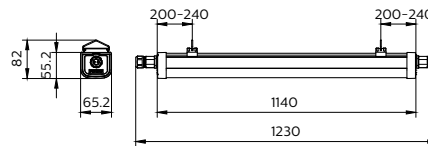
WT068C L1200



WT068C L1500



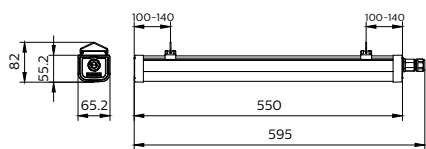
WT068C L1500 TW



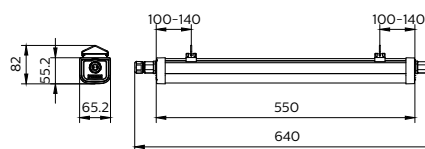
WT068C L1200 TW

SB Waterproof WT068 G2

Dimensional drawing



WT068C L600



WT068C L600 TW

SB Waterproof WT068 G2

General Information

| | |
|----------------------|--------|
| Driver included | Yes |
| Gear | - |
| Number of gear units | 1 unit |

Light Technical

| | |
|---------------------------------|-------------|
| Beam angle of light source | - degree(s) |
| Color rendering index (CRI) | 80 |
| Luminous Efficacy (rated) (Nom) | 120 lm/W |
| Optic type | Opal |

Operating and Electrical

| | |
|-------------------------------|-----------------|
| Protection class IEC | Safety class II |
| Input Voltage | 220/240 V |
| Line Frequency | 50 or 60 Hz |
| Suitable for random switching | Yes |

Controls and Dimming

| | |
|-------------------|----------------|
| Dimmable | No |
| Maximum dim level | Not applicable |

Mechanical and Housing

| | |
|------------------------------|------|
| Optical cover type | Opal |
| Housing Color | Grey |
| Mech. impact protection code | IK08 |
| Ingress protection code | IP66 |

Approval and Application

| | |
|---------------------------|---|
| Ambient temperature range | -20 to +45 °C |
| CE mark | Yes |
| ENEC mark | - |
| Flammability mark | For mounting on normally flammable surfaces |
| Glow-wire test | Temperature 850 °C, duration 30 s |

Initial Performance (IEC Compliant)

| | |
|-------------------------|-------------|
| Luminous flux tolerance | -10% / +10% |
|-------------------------|-------------|

Light Technical

| Order Code | Full Product Name | Correlated Color Temperature (Nom) | Luminous Flux |
|--------------|----------------------------------|------------------------------------|---------------|
| 911401863385 | WT068C CW LED36 L1200 PSU TW1 G2 | 6500 K | 3,600 lm |
| 911401863285 | WT068C CW LED18 L600 PSU TW1 G2 | 6500 K | 1,800 lm |
| 911401862785 | WT068C CW LED36 L1200 PSU G2 | 6500 K | 3,600 lm |
| 911401863085 | WT068C NW LED36 L1200 PSU G2 | 4000 K | 3,600 lm |
| 911401863485 | WT068C CW LED56 L1500 PSU TW1 G2 | 6500 K | 5,600 lm |
| 911401863785 | WT068C NW LED56 L1500 PSU TW1 G2 | 4000 K | 5,600 lm |
| 911401862685 | WT068C CW LED18 L600 PSU G2 | 6500 K | 1,800 lm |
| 911401862985 | WT068C NW LED18 L600 PSU G2 | 4000 K | 1,800 lm |
| 911401862885 | WT068C CW LED56 L1500 PSU G2 | 6500 K | 5,600 lm |
| 911401863185 | WT068C NW LED56 L1500 PSU G2 | 4000 K | 5,600 lm |

Operating and Electrical

| Order Code | Full Product Name | Power Consumption |
|--------------|----------------------------------|-------------------|
| 911401863385 | WT068C CW LED36 L1200 PSU TW1 G2 | 30 W |
| 911401863285 | WT068C CW LED18 L600 PSU TW1 G2 | 15 W |
| 911401862785 | WT068C CW LED36 L1200 PSU G2 | 30 W |
| 911401863085 | WT068C NW LED36 L1200 PSU G2 | 30 W |
| 911401863485 | WT068C CW LED56 L1500 PSU TW1 G2 | 46.5 W |

| Order Code | Full Product Name | Power Consumption |
|--------------|----------------------------------|-------------------|
| 911401863785 | WT068C NW LED56 L1500 PSU TW1 G2 | 46.5 W |
| 911401862685 | WT068C CW LED18 L600 PSU G2 | 15 W |
| 911401862985 | WT068C NW LED18 L600 PSU G2 | 15 W |
| 911401862885 | WT068C CW LED56 L1500 PSU G2 | 46.5 W |
| 911401863185 | WT068C NW LED56 L1500 PSU G2 | 46.5 W |

Initial Performance (IEC Compliant)

SB Waterproof WT068 G2

| Order Code | Full Product Name | Initial chromaticity |
|--------------|----------------------------------|-----------------------|
| 911401863385 | WT068C CW LED36 L1200 PSU TW1 G2 | (x=0.31,y=0.33)SDCM≤5 |
| 911401863285 | WT068C CW LED18 L600 PSU TW1 G2 | (x=0.31,y=0.33)SDCM≤5 |
| 911401862785 | WT068C CW LED36 L1200 PSU G2 | (x=0.31,y=0.33)SDCM≤5 |
| 911401863085 | WT068C NW LED36 L1200 PSU G2 | (x=0.38,y=0.38)SDCM≤5 |
| 911401863485 | WT068C CW LED56 L1500 PSU TW1 G2 | (x=0.31,y=0.33)SDCM≤5 |

| Order Code | Full Product Name | Initial chromaticity |
|--------------|----------------------------------|-----------------------|
| 911401863785 | WT068C NW LED56 L1500 PSU TW1 G2 | (x=0.38,y=0.38)SDCM≤5 |
| 911401862685 | WT068C CW LED18 L600 PSU G2 | (x=0.31,y=0.33)SDCM≤5 |
| 911401862985 | WT068C NW LED18 L600 PSU G2 | (x=0.38,y=0.38)SDCM≤5 |
| 911401862885 | WT068C CW LED56 L1500 PSU G2 | (x=0.31,y=0.33)SDCM≤5 |
| 911401863185 | WT068C NW LED56 L1500 PSU G2 | (x=0.38,y=0.38)SDCM≤5 |

