

SB Waterproof WT068C G2 provides 3 sizes, standard and through wiring version and 2 CCTs to cater to different customer needs.

SB Waterproof WT068 G2

SB Waterproof WT068C G2 provides flexibility to customer to choose from 3 sizes, standard and through wiring version and 2 CCTs to cater to different customer needs.

Benefits

- Lifetime: 30,000 hrs@L70B50, 3 years warranty
- IP66, IK08
- Through wiring is the option to meet customer needs

Features

- 2 CCTs (NW & CW), 3 lengths (L600, L1200 and L1500), standard and through wiring versions
- High efficacy with 120lm/W
- Reliable with a long lifetime of 30,000 hrs L70
- IP66/IK08: water and dustproof

SB Waterproof WT068 G2

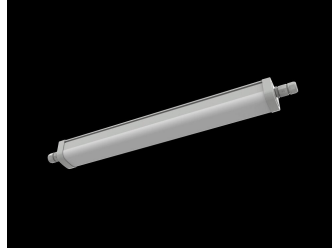
Application

- Parking Garages
- Offices

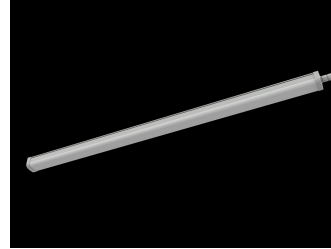
Versions



SB WATERPROOF

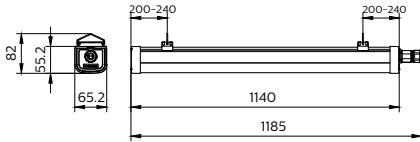


SB WATERPROOF

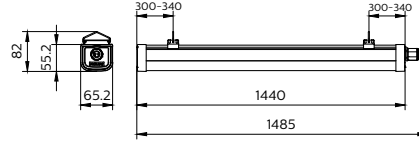


SB WATERPROOF

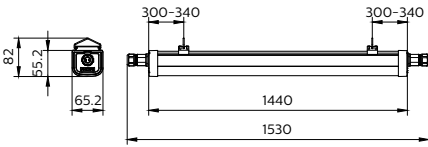
Dimensional drawing



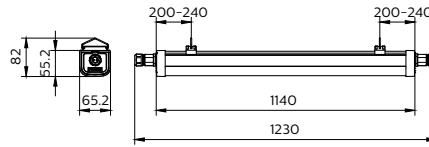
WT068C L1200



WT068C L1500



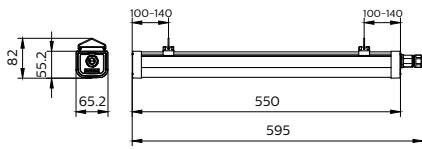
WT068C L1500 TW



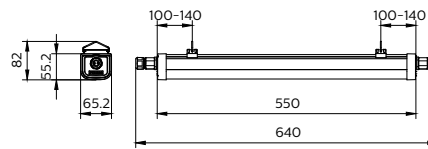
WT068C L1200 TW

SB Waterproof WT068 G2

Dimensional drawing



WT068C L600



WT068C L600 TW

SB Waterproof WT068 G2

General Information

Driver included	Yes
Gear	-
Number of gear units	1 unit

Light Technical

Beam angle of light source	- degree(s)
Color rendering index (CRI)	80
Luminous Efficacy (rated) (Nom)	120 lm/W
Optic type	Opal

Operating and Electrical

Protection class IEC	Safety class II
Input Voltage	220/240 V
Line Frequency	50 or 60 Hz
Suitable for random switching	Yes

Controls and Dimming

Dimmable	No
Maximum dim level	Not applicable

Mechanical and Housing

Optical cover type	Opal
Housing Color	Grey
Mech. impact protection code	IK08
Ingress protection code	IP66

Approval and Application

Ambient temperature range	-20 to +45 °C
CE mark	Yes
ENEC mark	-
Flammability mark	For mounting on normally flammable surfaces
Glow-wire test	Temperature 850 °C, duration 30 s

Initial Performance (IEC Compliant)

Luminous flux tolerance	-10% / +10%
-------------------------	-------------

Light Technical

Order Code	Full Product Name	Correlated Color Temperature (Nom)	Luminous Flux
51448599	WT068C CW LED36 L1200 PSU TW1 G2	6500 K	3,600 lm
51447899	WT068C CW LED18 L600 PSU TW1 G2	6500 K	1,800 lm
51442399	WT068C CW LED36 L1200 PSU G2	6500 K	3,600 lm
51445499	WT068C NW LED36 L1200 PSU G2	4000 K	3,600 lm
51449299	WT068C CW LED56 L1500 PSU TW1 G2	6500 K	5,600 lm
51452299	WT068C NW LED56 L1500 PSU TW1 G2	4000 K	5,600 lm
51441699	WT068C CW LED18 L600 PSU G2	6500 K	1,800 lm
51444799	WT068C NW LED18 L600 PSU G2	4000 K	1,800 lm
51443099	WT068C CW LED56 L1500 PSU G2	6500 K	5,600 lm
51446199	WT068C NW LED56 L1500 PSU G2	4000 K	5,600 lm

Operating and Electrical

Order Code	Full Product Name	Power Consumption
51448599	WT068C CW LED36 L1200 PSU TW1 G2	30 W
51447899	WT068C CW LED18 L600 PSU TW1 G2	15 W
51442399	WT068C CW LED36 L1200 PSU G2	30 W
51445499	WT068C NW LED36 L1200 PSU G2	30 W
51449299	WT068C CW LED56 L1500 PSU TW1 G2	46.5 W

Order Code	Full Product Name	Power Consumption
51452299	WT068C NW LED56 L1500 PSU TW1 G2	46.5 W
51441699	WT068C CW LED18 L600 PSU G2	15 W
51444799	WT068C NW LED18 L600 PSU G2	15 W
51443099	WT068C CW LED56 L1500 PSU G2	46.5 W
51446199	WT068C NW LED56 L1500 PSU G2	46.5 W

Initial Performance (IEC Compliant)

SB Waterproof WT068 G2

Order Code	Full Product Name	Initial chromaticity
51448599	WT068C CW LED36 L1200 PSU TW1 G2	(x=0.31,y=0.33)SDCM≤5
51447899	WT068C CW LED18 L600 PSU TW1 G2	(x=0.31,y=0.33)SDCM≤5
51442399	WT068C CW LED36 L1200 PSU G2	(x=0.31,y=0.33)SDCM≤5
51445499	WT068C NW LED36 L1200 PSU G2	(x=0.38,y=0.38)SDCM≤5
51449299	WT068C CW LED56 L1500 PSU TW1 G2	(x=0.31,y=0.33)SDCM≤5

Order Code	Full Product Name	Initial chromaticity
51452299	WT068C NW LED56 L1500 PSU TW1 G2	(x=0.38,y=0.38)SDCM≤5
51441699	WT068C CW LED18 L600 PSU G2	(x=0.31,y=0.33)SDCM≤5
51444799	WT068C NW LED18 L600 PSU G2	(x=0.38,y=0.38)SDCM≤5
51443099	WT068C CW LED56 L1500 PSU G2	(x=0.31,y=0.33)SDCM≤5
51446199	WT068C NW LED56 L1500 PSU G2	(x=0.38,y=0.38)SDCM≤5

