

SB Waterproof WT068C G2 provides 3 sizes, standard and through wiring version and 2 CCTs to cater to different customer needs.

SB Waterproof WT068 G2

SB Waterproof WT068C G2 provides flexibility to customer to choose from 3 sizes, standard and through wiring version and 2 CCTs to cater to different customer needs.

Benefits

- Lifetime: 30,000 hrs@L70B50, 3 years warranty
- IP66, IK08
- Through wiring is the option to meet customer needs

Features

- 2 CCTs (NW & CW), 3 lengths (L600, L1200 and L1500), standard and through wiring versions
- High efficacy with 120lm/W
- Reliable with a long lifetime of 30,000 hrs L70
- IP66/IK08: water and dustproof

SB Waterproof WT068 G2

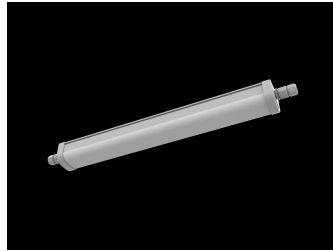
Application

- Parking Garages
- Offices

Versions



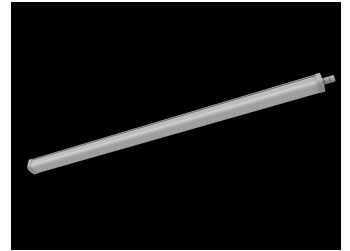
SB WATERPROOF



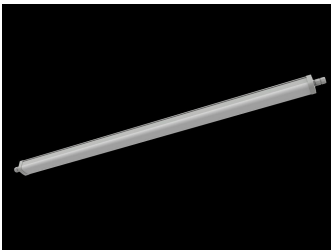
SB WATERPROOF



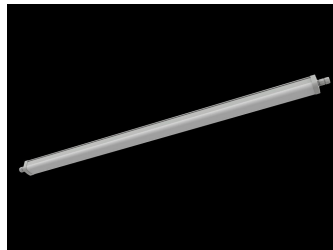
SB WATERPROOF



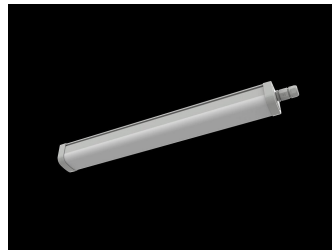
SB WATERPROOF



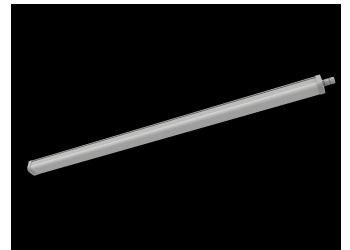
SB WATERPROOF



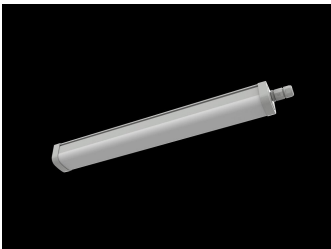
SB WATERPROOF



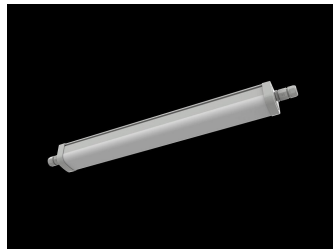
SB WATERPROOF



SB WATERPROOF



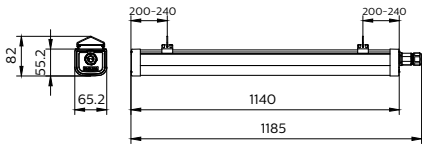
SB WATERPROOF



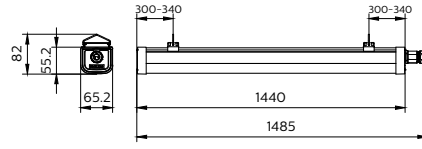
SB WATERPROOF

SB Waterproof WT068 G2

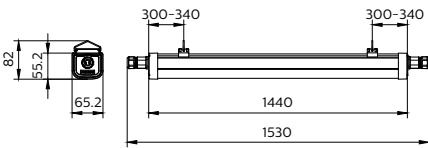
Dimensional drawing



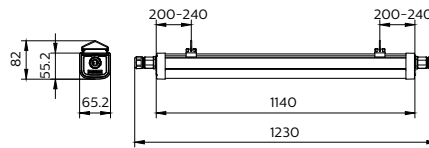
WT068C L1200



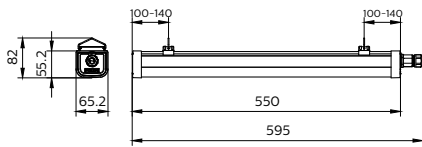
WT068C L1500



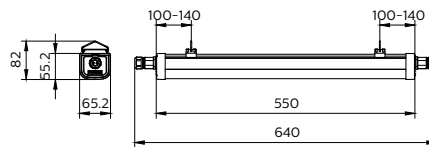
WT068C L1500 TW



WT068C L1200 TW



WT068C L600



WT068C L600 TW

SB Waterproof WT068 G2

General Information

Driver included	Yes
Gear	-
Number of gear units	1 unit

Light Technical

Beam angle of light source	- degree(s)
Color rendering index (CRI)	80
Luminous Efficacy (rated) (Nom)	120 lm/W
Optic type	Opal

Operating and Electrical

Protection class IEC	Safety class II
Input Voltage	220/240 V
Line Frequency	50 or 60 Hz
Suitable for random switching	Yes

Controls and Dimming

Dimmable	No
Maximum dim level	Not applicable

Mechanical and Housing

Optical cover type	Opal
Housing Color	Grey
Mech. impact protection code	IK08
Ingress protection code	IP66

Approval and Application

Ambient temperature range	-20 to +45 °C
ENEC mark	-
Flammability mark	For mounting on normally flammable surfaces
Glow-wire test	Temperature 850 °C, duration 30 s

Initial Performance (IEC Compliant)

Luminous flux tolerance	-10% / +10%
-------------------------	-------------

Light Technical

Order Code	Full Product Name	Correlated Color Temperature (Nom)	Luminous Flux
911401862185	WT068C CW LED36 L1200 PSU TW1 GC G2	6500 K	3,600 lm
911401862485	WT068C NW LED36 L1200 PSU TW1 GC G2	4000 K	3,600 lm
911401863385	WT068C CW LED36 L1200 PSU TW1 G2	6500 K	3,600 lm
911401863285	WT068C CW LED18 L600 PSU TW1 G2	6500 K	1,800 lm
911401862785	WT068C CW LED36 L1200 PSU G2	6500 K	3,600 lm
911401863085	WT068C NW LED36 L1200 PSU G2	4000 K	3,600 lm
911401861585	WT068C CW LED36 L1200 PSU GC G2	6500 K	3,600 lm
911401861885	WT068C NW LED36 L1200 PSU GC G2	4000 K	3,600 lm
911401861685	WT068C CW LED56 L1500 PSU GC G2	6500 K	5,600 lm
911401861985	WT068C NW LED56 L1500 PSU GC G2	4000 K	5,600 lm
911401862285	WT068C CW LED56 L1500 PSU TW1 GC G2	6500 K	5,600 lm
911401863485	WT068C CW LED56 L1500 PSU TW1 G2	6500 K	5,600 lm
911401863785	WT068C NW LED56 L1500 PSU TW1 G2	4000 K	5,600 lm
911401862685	WT068C CW LED18 L600 PSU G2	6500 K	1,800 lm
911401862985	WT068C NW LED18 L600 PSU G2	4000 K	1,800 lm
911401862885	WT068C CW LED56 L1500 PSU G2	6500 K	5,600 lm
911401863185	WT068C NW LED56 L1500 PSU G2	4000 K	5,600 lm
911401861485	WT068C CW LED18 L600 PSU GC G2	6500 K	1,800 lm
911401861785	WT068C NW LED18 L600 PSU GC G2	4000 K	1,800 lm
911401862085	WT068C CW LED18 L600 PSU TW1 GC G2	6500 K	1,800 lm

Operating and Electrical

Order Code	Full Product Name	Power Consumption
911401862185	WT068C CW LED36 L1200 PSU TW1 GC G2	30 W
911401862485	WT068C NW LED36 L1200 PSU TW1 GC G2	30 W
911401863385	WT068C CW LED36 L1200 PSU TW1 G2	30 W
911401863285	WT068C CW LED18 L600 PSU TW1 G2	15 W
911401862785	WT068C CW LED36 L1200 PSU G2	30 W
911401863085	WT068C NW LED36 L1200 PSU G2	30 W
911401861585	WT068C CW LED36 L1200 PSU GC G2	30 W
911401861885	WT068C NW LED36 L1200 PSU GC G2	30 W
911401861685	WT068C CW LED56 L1500 PSU GC G2	46.5 W
911401861985	WT068C NW LED56 L1500 PSU GC G2	46.5 W

Order Code	Full Product Name	Power Consumption
911401862285	WT068C CW LED56 L1500 PSU TW1 GC G2	46.5 W
911401863485	WT068C CW LED56 L1500 PSU TW1 G2	46.5 W
911401863785	WT068C NW LED56 L1500 PSU TW1 G2	46.5 W
911401862685	WT068C CW LED18 L600 PSU G2	15 W
911401862985	WT068C NW LED18 L600 PSU G2	15 W
911401862885	WT068C CW LED56 L1500 PSU G2	46.5 W
911401863185	WT068C NW LED56 L1500 PSU G2	46.5 W
911401861485	WT068C CW LED18 L600 PSU GC G2	15 W
911401861785	WT068C NW LED18 L600 PSU GC G2	15 W
911401862085	WT068C CW LED18 L600 PSU TW1 GC G2	15 W

SB Waterproof WT068 G2

Approval and Application

Order Code	Full Product Name	CE mark
911401862185	WT068C CW LED36 L1200 PSU TW1 GC G2	No
911401862485	WT068C NW LED36 L1200 PSU TW1 GC G2	No
911401863385	WT068C CW LED36 L1200 PSU TW1 G2	Yes
911401863285	WT068C CW LED18 L600 PSU TW1 G2	Yes
911401862785	WT068C CW LED36 L1200 PSU G2	Yes
911401863085	WT068C NW LED36 L1200 PSU G2	Yes
911401861585	WT068C CW LED36 L1200 PSU GC G2	No
911401861885	WT068C NW LED36 L1200 PSU GC G2	No
911401861685	WT068C CW LED56 L1500 PSU GC G2	No
911401861985	WT068C NW LED56 L1500 PSU GC G2	No

Order Code	Full Product Name	CE mark
911401862285	WT068C CW LED56 L1500 PSU TW1 GC G2	No
911401863485	WT068C CW LED56 L1500 PSU TW1 G2	Yes
911401863785	WT068C NW LED56 L1500 PSU TW1 G2	Yes
911401862685	WT068C CW LED18 L600 PSU G2	Yes
911401862985	WT068C NW LED18 L600 PSU G2	Yes
911401862885	WT068C CW LED56 L1500 PSU G2	Yes
911401863185	WT068C NW LED56 L1500 PSU G2	Yes
911401861485	WT068C CW LED18 L600 PSU GC G2	No
911401861785	WT068C NW LED18 L600 PSU GC G2	No
911401862085	WT068C CW LED18 L600 PSU TW1 GC G2	No

Initial Performance (IEC Compliant)

Order Code	Full Product Name	Initial chromaticity
911401862185	WT068C CW LED36 L1200 PSU TW1 GC G2	(x=0.31,y=0.33)SDCM≤5
911401862485	WT068C NW LED36 L1200 PSU TW1 GC G2	(x=0.38,y=0.38)SDCM≤5
911401863385	WT068C CW LED36 L1200 PSU TW1 G2	(x=0.31,y=0.33)SDCM≤5
911401863285	WT068C CW LED18 L600 PSU TW1 G2	(x=0.31,y=0.33)SDCM≤5
911401862785	WT068C CW LED36 L1200 PSU G2	(x=0.31,y=0.33)SDCM≤5
911401863085	WT068C NW LED36 L1200 PSU G2	(x=0.38,y=0.38)SDCM≤5
911401861585	WT068C CW LED36 L1200 PSU GC G2	(x=0.31,y=0.33)SDCM≤5
911401861885	WT068C NW LED36 L1200 PSU GC G2	(x=0.38,y=0.38)SDCM≤5
911401861685	WT068C CW LED56 L1500 PSU GC G2	(x=0.31,y=0.33)SDCM≤5
911401861985	WT068C NW LED56 L1500 PSU GC G2	(x=0.38,y=0.38)SDCM≤5

Order Code	Full Product Name	Initial chromaticity
911401862285	WT068C CW LED56 L1500 PSU TW1 GC G2	(x=0.31,y=0.33)SDCM≤5
911401863485	WT068C CW LED56 L1500 PSU TW1 G2	(x=0.31,y=0.33)SDCM≤5
911401863785	WT068C NW LED56 L1500 PSU TW1 G2	(x=0.38,y=0.38)SDCM≤5
911401862685	WT068C CW LED18 L600 PSU G2	(x=0.31,y=0.33)SDCM≤5
911401862985	WT068C NW LED18 L600 PSU G2	(x=0.38,y=0.38)SDCM≤5
911401862885	WT068C CW LED56 L1500 PSU G2	(x=0.31,y=0.33)SDCM≤5
911401863185	WT068C NW LED56 L1500 PSU G2	(x=0.38,y=0.38)SDCM≤5
911401861485	WT068C CW LED18 L600 PSU GC G2	(x=0.31,y=0.33)SDCM≤5
911401861785	WT068C NW LED18 L600 PSU GC G2	(x=0.38,y=0.38)SDCM≤5
911401862085	WT068C CW LED18 L600 PSU TW1 GC G2	(x=0.31,y=0.33)SDCM≤5

