



Wireless gateway
Interact Pro

LCN1840/05



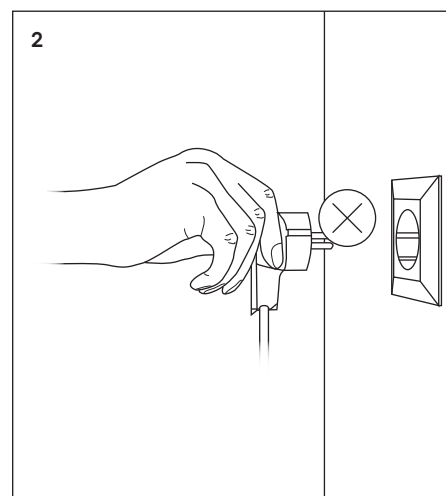
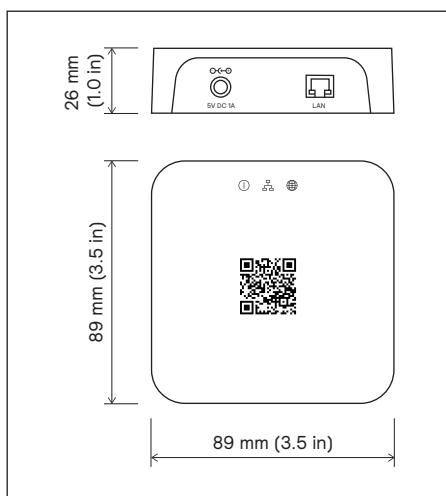
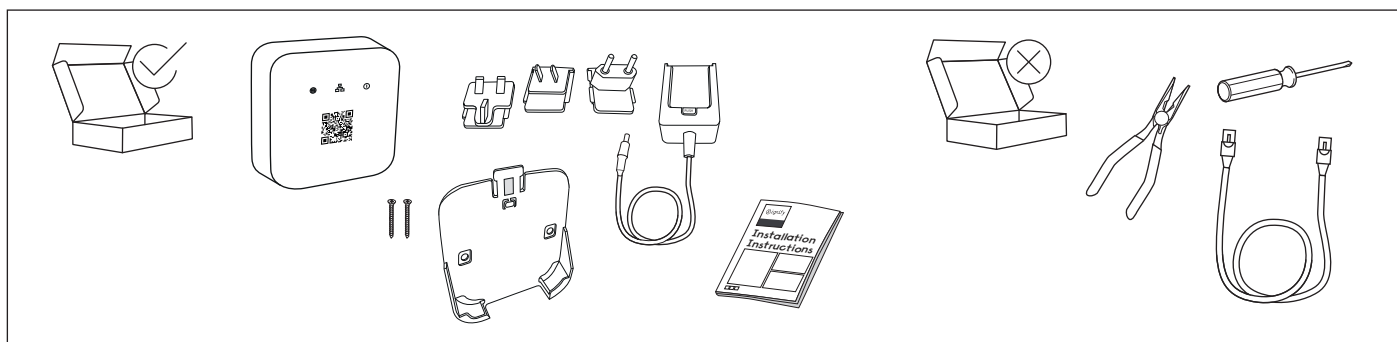
Installation instructions

Instructions d'installation
Instrucciones de instalación

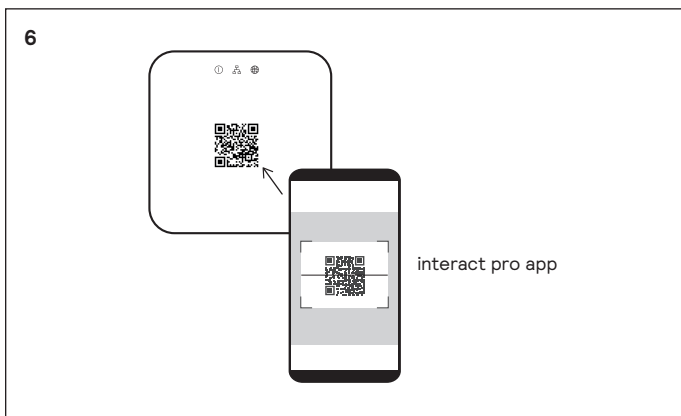
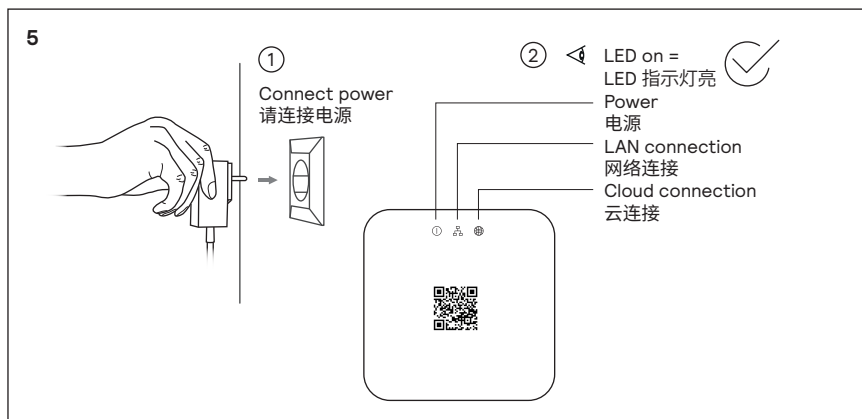
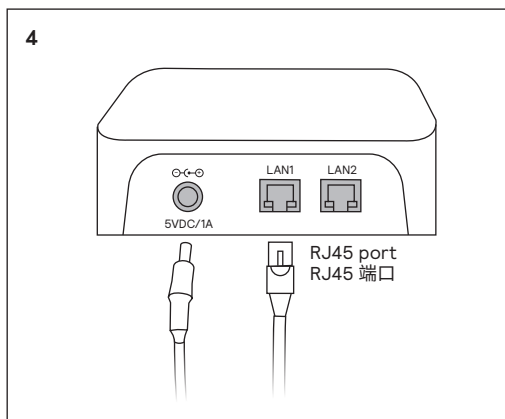
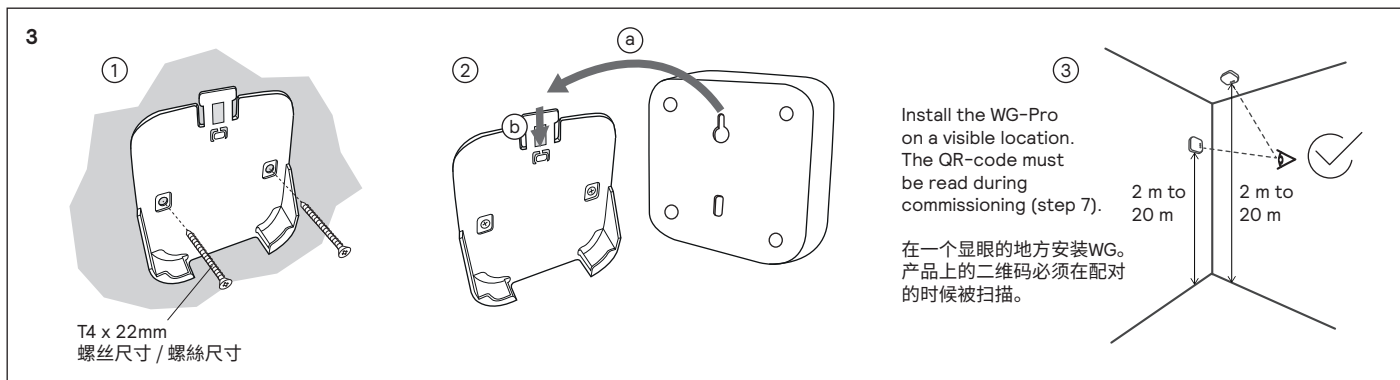
Istruzioni per l'installazione
Installatie-instructies

Installationsanweisungen
インストール手順

安裝指示书
إرشادات التركيب



1x CR1632
Li-MnO₂



A portal to access Interact PRO is available at:
<https://sme.interact-lighting.com> (world except China)
<https://sme.interact-lighting.cn> (China)

Note
 This product contains open source software. The acknowledgements, license texts and the written offer can be retrieved from the product by opening the http page of this product.

注意
 该产品含有开源软件。相关的声明, 版权等信息均可通过访问该产品http网页获得

FCC Compliance Statement

This device complies with part 15 of the FCC Rules. Operation is subject to the following two conditions: (1) This device may not cause harmful interference, and (2) this device must accept any interference received, including interference that may cause undesired operation.

IC Compliance Statement

This device complies with Industry Canada license-exempt RSSs. Operation is subject to the following two conditions: (1) this device may not cause interference, and (2) this device must accept any interference, including interference that may cause undesired operation of the device.

Any changes or modifications not expressly approved by Signify could void the user's authority to operate this equipment. This equipment is intended for commercial use only.

FCC Radiation Exposure Statement

This equipment complies with FCC radiation exposure limits set forth for an uncontrolled environment. This equipment should be installed and operated with minimum distance 20 cm between the radiator & your body.

IC Radiation Exposure Statement

(EN) This equipment complies with IC RSS-102 radiation exposure limits set forth for an uncontrolled environment. This equipment should be installed and operated with minimum distance 20 cm between the radiator & your body.

(FR) Cet équipement est conforme aux limites d'exposition aux rayonnements IC établies pour un environnement non contrôlé. Cet équipement doit être installé et utilisé avec un minimum de 20 cm de distance entre la source de rayonnement et votre corps.

Hereby, Signify declares that the radio equipment type LCN1840/05 is in compliance with Directive 2014/53/EU. The full text of the EU declaration of conformity is available at the following Internet address:
www.signify.com/red



© 2019–2025 Signify Holding. All rights reserved. The information provided herein is subject to change, without notice. Signify does not give any representation or warranty as to the accuracy or completeness of the information included herein and shall not be liable for any action in reliance thereon. The information presented in this document is not intended as any commercial offer and does not form part of any quotation or contract, unless otherwise agreed by Signify. All trademarks are owned by Signify Holding or their respective owners.

UK importer address:
 Signify Commercial UK Limited
 2 Guildford Business Park
 GU2 8XG, UK

