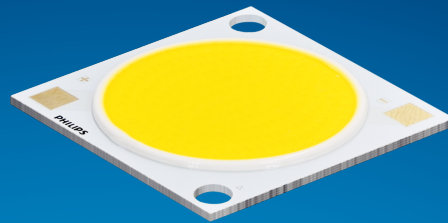


PHILIPS

Fortimo

LED

Fortimo SLM C 9xx 1211
L22 2828 G8N



Datasheet

Best offer of performance and value

Fortimo LED SLM CRI90 G8N Standard

The Fortimo SLM family is Signify's core portfolio, now in its latest generation - Gen 8. This new generation boasts improved efficacy compared to the previous one and an expanded portfolio that includes specific spectrums such as Premium White, Premium Color, and standard color for all applications. It maintains the same two footprints as the previous generation, enabling easy upgrades. Together with other Fortimo SLM G8 product lines, our Fortimo SLM G8 will continuously unlock the extraordinary potential of light, facilitate innovation, and inspire the next generation of luminaire design for our OEM customers. Please also visit the online Easy Design-in Tool for your perfect system combination at www.easydesignintool.com.

Key features and benefits

- +5% efficacy further improvement Vs G7
- Best quality of light available for all applications
- More complete portfolio for easy choice
- Same footprint for easy upgrade
- System proposition

March 2025



Ordering data

Commercial product name	EOC	12NC	EPREL registration #	Box quantity
Fortimo SLM C 927 1211 L22 2828 G8N	8721103 083128 00	9290 048 20101	2270378	10
Fortimo SLM C 930 1211 L22 2828 G8N	8721103 083159 00	9290 048 20201	2270376	10
Fortimo SLM C 935 1211 L22 2828 G8N	8721103 083180 00	9290 048 20301	2270388	10
Fortimo SLM C 940 1211 L22 2828 G8N	8721103 083210 00	9290 048 20401	2270380	10
Fortimo SLM C 930 PW 1211 L22 2828 G8N	8721103 083241 00	9290 048 20501	2270482	10
Fortimo SLM C 935 PW 1211 L22 2828 G8N	8721103 083272 00	9290 048 20601	2270469	10
Fortimo SLM C 940 PW 1211 L22 2828 G8N	8721103 083302 00	9290 048 20701	2270483	10

Drive currents

Parameter	Nominal*	Life**	Max***	Unit
Fortimo SLM C 9xx 1211 L22 2828 G8N	990	see performance window	2530	mA

Module temperatures

Parameter	Nominal*	Life**	Max***	Unit
T _c (case temperature at T _c point)	65	see performance window	95	°C


* Nominal value at which typical performance is specified

** Value at which life time is specified

*** Maximum value for safe operation, do not operate above this value

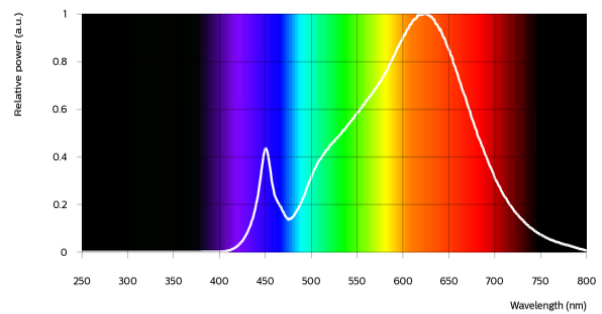
Optical characteristics - table per color (CCT)

Fortimo SLM C 927 1211 L22 2828 G8N


Parameter	Min	Typ	Max	Unit
Luminous flux	4299	4525	4978	lm
Efficacy		132		lm/W
Correlated color temperature (CCT)		2700		K
Color coordinates (CIEx, CIEy)		(0.458, 0.410)		-
Color consistency			3	SDCM
CRI	90			
R9	50			
Photometric code		927/359		
Photobiological safety		RG1 unlimited		

Measurement precision $\pm 5\%$ for the flux data and $\pm 6\%$ for the efficacy data. Measurement precision for color coordinates ± 0.005 . Measurement precision for CRI ± 1.5 .

Operation point	927	lm	lm/W
80% I-nom 792mA	Tc 25 °C	3836	141
	Tc-nom 65 °C	3673	137
	Tc-max 95 °C	3499	131
I-nom 990mA	Tc 25 °C	4727	136
	Tc-nom 65 °C	4525	132
	Tc-max 95 °C	4308	127
I-max 2530mA	Tc 25 °C	11046	110
	Tc-nom 65 °C	10533	106
	Tc-max 95 °C	9983	101

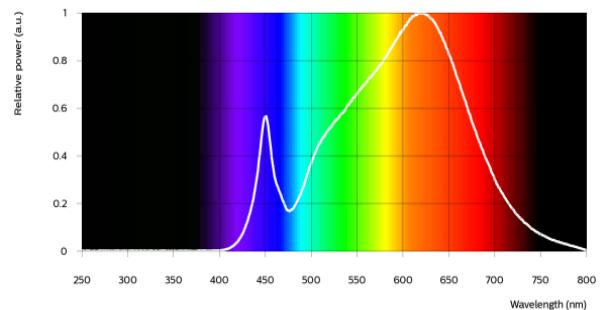


Fortimo SLM C 930 1211 L22 2828 G8N


Parameter	Min	Typ	Max	Unit
Luminous flux	4565	4805	5286	lm
Efficacy		140		lm/W
Correlated color temperature (CCT)		3000		K
Color coordinates (CIEx, CIEy)		(0.434, 0.403)		-
Color consistency			3	SDCM
CRI	90			
R9	50			
Photometric code		930/359		
Photobiological safety		RG1 unlimited		

Measurement precision $\pm 5\%$ for the flux data and $\pm 6\%$ for the efficacy data. Measurement precision for color coordinates ± 0.005 . Measurement precision for CRI ± 1.5 .

Operation point	930	lm	lm/W
80% I-nom 792mA	Tc 25 °C	4073	149
	Tc-nom 65 °C	3900	145
	Tc-max 95 °C	3715	139
I-nom 990mA	Tc 25 °C	5020	144
	Tc-nom 65 °C	4805	140
	Tc-max 95 °C	4575	135
I-max 2530mA	Tc 25 °C	11731	117
	Tc-nom 65 °C	11188	113
	Tc-max 95 °C	10604	108

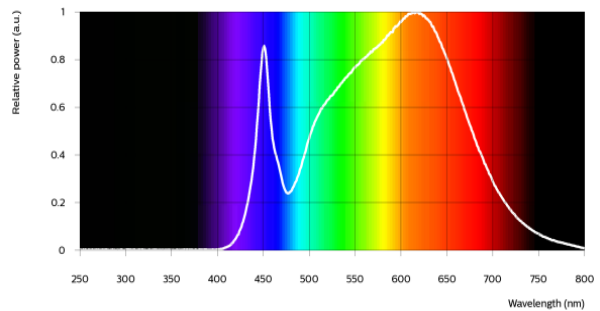


Fortimo SLM C 935 1211 L22 2828 G8N


Parameter	Min	Typ	Max	Unit
Luminous flux	4702	4950	5445	lm
Efficacy		144		lm/W
Correlated color temperature (CCT)		3500		K
Color coordinates (CIEx, CIEy)		(0.408, 0.393)		-
Color consistency			3	SDCM
CRI	90			
R9	50			
Photometric code		935/359		
Photobiological safety		RG1 unlimited		

Measurement precision ± 5% for the flux data and ± 6% for the efficacy data. Measurement precision for color coordinates ± 0.005. Measurement precision for CRI ± 1.5.

Operation point	935	lm	lm/W
80% I-nom 792mA	Tc 25 °C	4196	154
	Tc-nom 65 °C	4018	149
	Tc-max 95 °C	3827	143
I-nom 990mA	Tc 25 °C	5171	149
	Tc-nom 65 °C	4950	144
	Tc-max 95 °C	4713	139
I-max 2530mA	Tc 25 °C	12085	120
	Tc-nom 65 °C	11526	116
	Tc-max 95 °C	10926	111

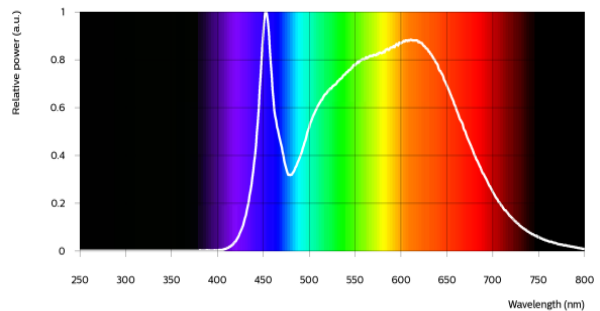


Fortimo SLM C 940 1211 L22 2828 G8N


Parameter	Min	Typ	Max	Unit
Luminous flux	4807	5060	5566	lm
Efficacy		147		lm/W
Correlated color temperature (CCT)		4000		K
Color coordinates (CIEx, CIEy)		(0.382, 0.380)		-
Color consistency			3	SDCM
CRI	90			
R9	50			
Photometric code		940/359		
Photobiological safety		RG1 unlimited		

Measurement precision ± 5% for the flux data and ± 6% for the efficacy data. Measurement precision for color coordinates ± 0.005. Measurement precision for CRI ± 1.5.

Operation point	940	lm	lm/W
80% I-nom 792mA	Tc 25 °C	4289	157
	Tc-nom 65 °C	4107	153
	Tc-max 95 °C	3912	147
I-nom 990mA	Tc 25 °C	5286	152
	Tc-nom 65 °C	5060	147
	Tc-max 95 °C	4818	142
I-max 2530mA	Tc 25 °C	12354	123
	Tc-nom 65 °C	11783	119
	Tc-max 95 °C	11170	113

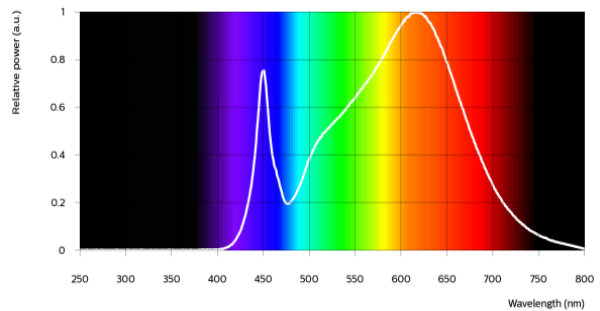


Fortimo SLM C 930 PW 1211 L22 2828 G8N


Parameter	Min	Typ	Max	Unit
Luminous flux	4565	4805	5286	lm
Efficacy		140		lm/W
Correlated color temperature (CCT)		3000		K
Color coordinates (CIEx, CIEy)		(0.422, 0.386)		-
Color consistency			3	SDCM
CRI	90			
R9	50			
Photometric code		930/359		
Photobiological safety		RG1 unlimited		

Measurement precision ± 5% for the flux data and ± 6% for the efficacy data. Measurement precision for color coordinates ± 0.005. Measurement precision for CRI ± 1.5.

Operation point	930	lm	lm/W
80% I-nom 792mA	Tc 25 °C	4073	149
	Tc-nom 65 °C	3900	145
	Tc-max 95 °C	3715	139
I-nom 990mA	Tc 25 °C	5020	144
	Tc-nom 65 °C	4805	140
	Tc-max 95 °C	4575	135
I-max 2530mA	Tc 25 °C	11731	117
	Tc-nom 65 °C	11188	113
	Tc-max 95 °C	10604	108

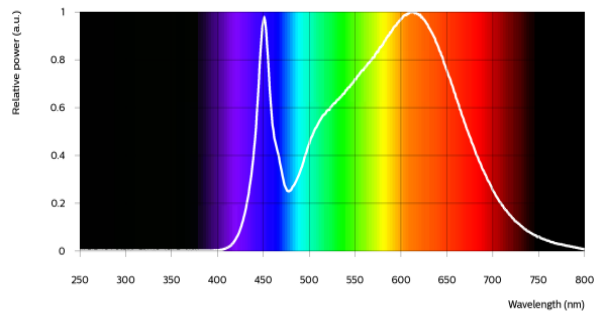



Fortimo SLM C 935 PW 1211 L22 2828 G8N

Parameter	Min	Typ	Max	Unit
Luminous flux	4702	4950	5445	lm
Efficacy		144		lm/W
Correlated color temperature (CCT)		3500		K
Color coordinates (CIEx, CIEy)		(0.398, 0.376)		-
Color consistency			3	SDCM
CRI	90			
R9	50			
Photometric code		935/359		
Photobiological safety		RG1 unlimited		

Measurement precision ± 5% for the flux data and ± 6% for the efficacy data. Measurement precision for color coordinates ± 0.005. Measurement precision for CRI ± 1.5.

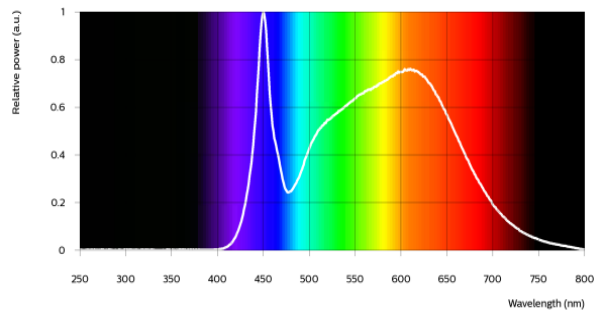
Operation point	935	lm	lm/W
80% I-nom 792mA	Tc 25 °C	4196	154
	Tc-nom 65 °C	4018	149
	Tc-max 95 °C	3827	143
I-nom 990mA	Tc 25 °C	5171	149
	Tc-nom 65 °C	4950	144
	Tc-max 95 °C	4713	139
I-max 2530mA	Tc 25 °C	12085	120
	Tc-nom 65 °C	11526	116
	Tc-max 95 °C	10926	111



Parameter	Min	Typ	Max	Unit
Luminous flux	4812	5065	5572	lm
Efficacy		147		lm/W
Correlated color temperature (CCT)		4000		K
Color coordinates (CIEx, CIEy)		(0.374, 0.364)		-
Color consistency			3	SDCM
CRI	90			
R9	50			
Photometric code		940/359		
Photobiological safety		RG1 unlimited		

Measurement precision ± 5% for the flux data and ± 6% for the efficacy data. Measurement precision for color coordinates ± 0.005. Measurement precision for CRI ± 1.5.

Operation point	940	lm	lm/W
80% I-nom 792mA	Tc 25 °C	4293	157
	Tc-nom 65 °C	4111	153
	Tc-max 95 °C	3916	147
I-nom 990mA	Tc 25 °C	5291	152
	Tc-nom 65 °C	5065	147
	Tc-max 95 °C	4823	142
I-max 2530mA	Tc 25 °C	12367	123
	Tc-nom 65 °C	11796	119
	Tc-max 95 °C	11183	114





Electrical characteristics

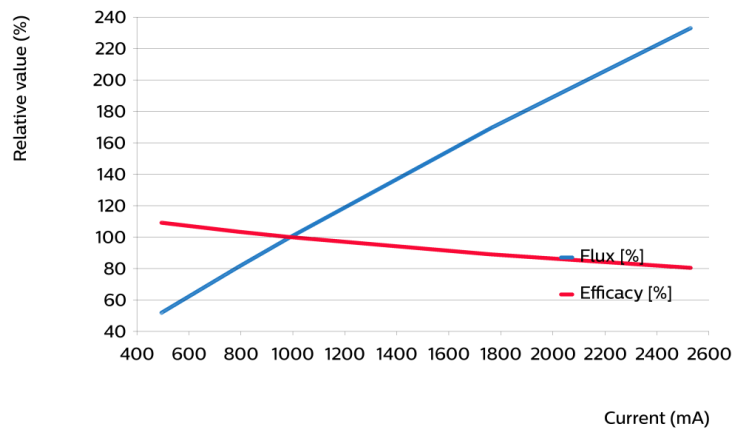
Parameter	Min	Typ	Max	Unit
Forward voltage	32.5	34.7	37.0	V
Power consumption	32.2	34.4	36.6	W = kWh/1000h
Number of modules in series per chain			1	
Number of modules per chain			1	
Number of modules in parallel			1	

Measurement precision for Vf +/- 3%. Measurement precision for power +/- 3.3%

Tuning information

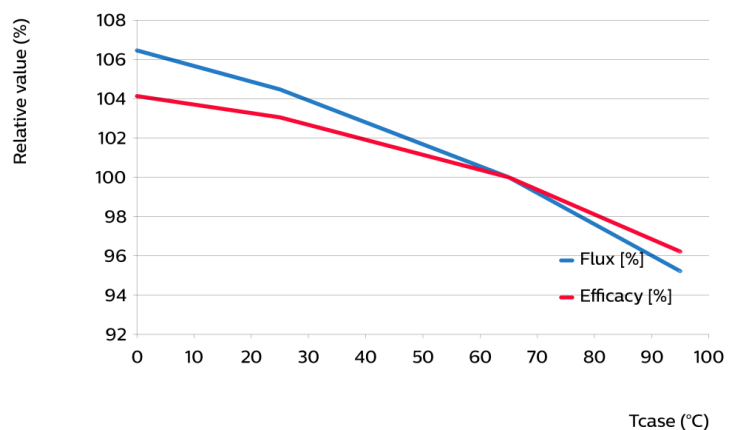
Flux and efficacy versus current (at Tc nominal)

I [mA]	Flux [%]	Efficacy [%]
2530	233	80
1760	169	89
990	100	100
792	81	103
495	52	109



Flux and efficacy versus temperature at Tc (at I nominal)

Tc [°C]	Flux [%]	Efficacy [%]
95	95	96
65	100	100
25	104	103
0	106	104



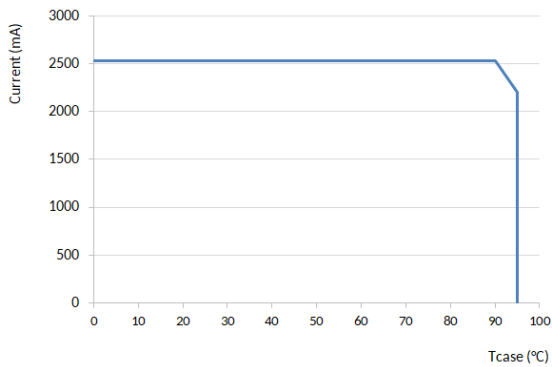
Lumen maintenance

Operation point	Lumen maintenance x 1000 hours	L70			L80			L90		
		B50	B20	B10	B50	B20	B10	B50	B20	B10
80% I-nom 792mA	Tc 50°C	>66	>66	>66	>66	>66	>66	>66	>66	>66
	Tc 65°C	>66	>66	>66	>66	>66	>66	>66	>66	>66
	Tc 95°C	>66	>66	>66	>66	>66	>66	>66	>66	>66
I-nom 990mA	Tc 50°C	>66	>66	>66	>66	>66	>66	>66	>66	>66
	Tc 65°C	>66	>66	>66	>66	>66	>66	>66	>66	>66
	Tc 95°C	>66	>66	>66	>66	>66	>66	>66	>66	62
I-max 2530mA	Tc 50°C	>66	>66	>66	>66	58	53	32	27	25
	Tc 65°C	>66	>66	64	51	43	40	24	20	18
	Tc 95°C	50	42	39	31	26	24	14	12	11

Lifetime

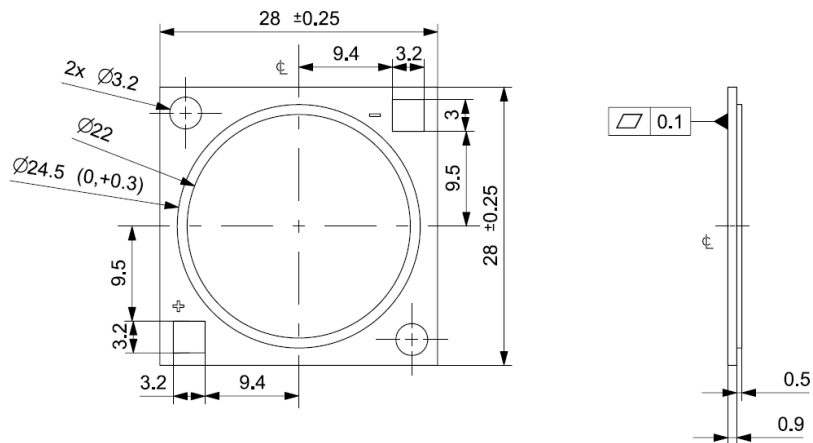
Parameter	Value	Unit
M70F50 nominal	>66000	hours

Performance Window



Mechanical characteristics

Parameter	Min	Typ	Max	Unit
Length	27.75	28	28.25	mm
Width	27.75	28	28.25	mm
Height PCB	0.8	0.9	1	mm
Height including dam	1.1	1.4	1.7	mm
Product mass		2.03		gram



Absolute ratings

Parameter	Min	Max	Unit
Current through the LED module (I-max)		2530	mA
Case temperature (Tc-max)		95	°C
ESD (direct contact)	8		kV
Working voltage		60	V _{dc}
Ambient temperature	-20	40	°C
Storage temperature	-40	80	°C

At illumination levels exceeding 1372 lux risk group classification may be RG2.

Application information

Certificates and Standards

CB
CE
ENEC
IEC/EN 62031
UKCA
UL
UL 8750

Environmental

RoHS/REACH

Application

IP rating	No IP-rating
Overheating protection	No
Luminaire class	IEC Class I and Class II
Dimming	Yes



© 2025 Signify Holding, IBRS 10461, 5600VB, NL. All rights reserved. The information provided herein is subject to change, without notice. Signify does not give any representation or warranty as to the accuracy or completeness of the information included herein and shall not be liable for any action in reliance thereon. The information presented in this document is not intended as any commercial offer and does not form part of any quotation or contract, unless otherwise agreed by Signify.

www.philips.com/oem

Philips and the Philips Shield Emblem are registered trademarks of Koninklijke Philips N.V. All other trademarks are owned by Signify Holding or their respective owners.
UK importer address: Signify Commercial UK Limited, 3 Guildford Business Park, GU2 8XG

10/03/2025