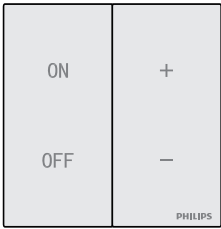


PHILIPS

EcoSet 蓝牙调光面板安装说明
EcoSet BLE Switch Dim Mounting Instructions



使用范围

- 1、使用环境：室内
- 2、调光器存储温度-25--65℃
- 3、电池存储温度-20--60℃
- 4、工作温度-20--55℃

本文中的面板参数是基于Ta25℃情况下提供。

Application

- 1、Application environment:indoor
- 2、Battery storage temperature:-25-65℃
- 3、Storage temperature of battery: -20-60℃
- 4、Operating temperature: -20-55℃

The panel parameters in this manual are provided at Ta25℃

产品描述

Product description

No.	I2NC	EAN3	产品描述	SIZE
No.1	911401590722	6923828658526	EcoSet 蓝牙调光面板 EcoSet BLE Switch Dim	86x88x14.5mm

技术参数

供 电：一节纽扣电池
电池型号：CR2450
额定电压：DC 3.0V
IP 防护：IP20

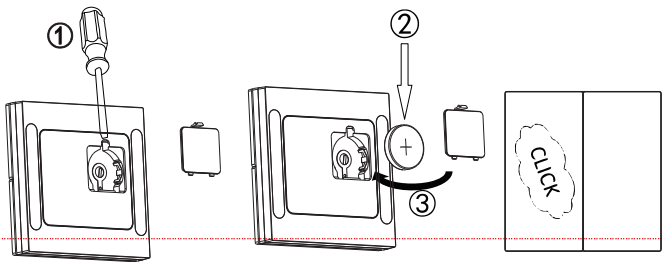
Technical parameter

Power supply: one button cell
Battery model: CR2450
Rated voltage: DC 3.0V
IP Grade: IP20

电池安装

Battery installation

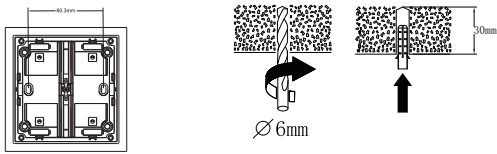
检查电池正负极，正确后安装
Insert the battery with correct polarity.



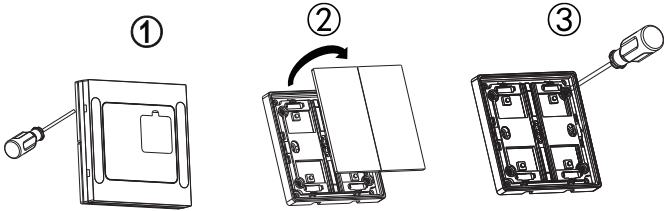
墙面安装

Wall mounting

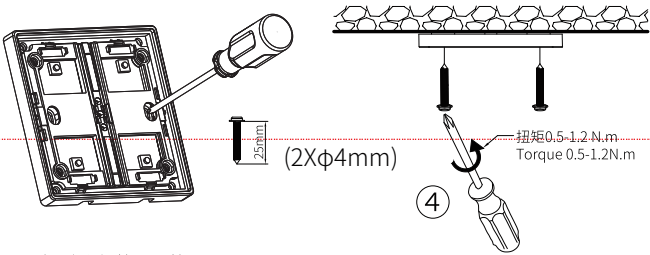
- 1. 用钻头将膨胀钉固定在需要放置的位置
1. Use a drill bit to fix the expansion nail at the required position



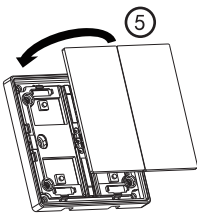
- 2. 拆下调光面板桌面安装框;卸下按键盖板; 装上墙装边框, 用螺丝刀将M2. 5*6螺丝锁紧
2. Detach the mounting frame and switch cover of the dimming panel. Fix the middle frame in position and tighten M2.5*6 screws with a screwdriver



- 3. 用螺丝刀将M4*25螺丝打入
3. Tighten M4*25 screw with screwdriver



- 4. 将按键盖板盖回
4. Install the switch cover back

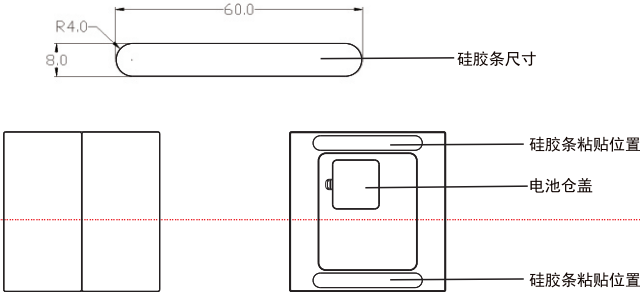


桌面安装(请客户自行购买胶条)

1. 将防滑硅胶条/贴胶条粘贴在产品外框上

Desktop installation(Customers need to buy separately)

1.Stick the anti-slip silicone tape/adhesive tape on the product frame



电池注意事项
Precautions for batteries



有害物质名称及含量
Name and content of hazardous substances

产品中有害物质的名称及含量						
部件名称	有害物质					
	铅 (Pb)	汞 (Hg)	镉 (Cd)	六价铬 (Cr(VI))	多溴联苯 (PBB)	多溴二苯醚 (PBDE)
PCB(板) 铜制及电子零部件	×	○	○	○	○	○
透镜光学部件	○	○	○	○	○	○
PCB(板) 铜制及电子零部件	○	○	○	○	○	○

本表格依据SJ/T 11364的规定编制
○：表示该有害物质在该部件所有均质材料汇总的含量均在GB/T 26572规定的限量要求以下。
×：表示该有害物质至少在该部件所测的某一均质材料中的含量超出GB/T 26572规定的限量要求。

调光面板按键功能说明

- 1.“ON” 打开灯具
- 2.“OFF” 关闭灯具
- 3.“+”调高亮度
- 4.“-”调低亮度
- 5.“ON”&“+” 搜索入网

*详细功能说明请参考Ecoset 系统应用指导书

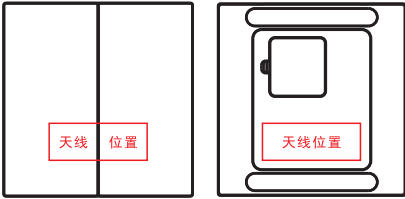
Function description of dimming panel keys

- 1."ON" turns on the lamp.
- 2."OFF" turns off the lamp.
- 3."+Turn up the brightness.
- 4."-Turn down the brightness
- 5."On"&"+Search into the network

*Please refer to Ecoset system application instruction for detailed functional description.

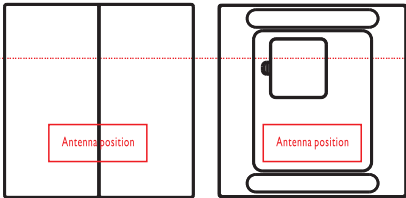
注意事项

1. 在安装或者使用本产品前，请先仔细阅读本手册。
2. 墙装时，请专业人员安装。
3. 面板开关（辐射方向）不要有含金属（导体）物体遮挡，保证产品无线辐射效果。
4. 面板开关尽可能远离变压器、开关器件等辐射源，距离干扰源越远，射频性能越好。
5. 本产品包装内含赠品电池，拆开包装若发现电池鼓胀、漏液、不能工作等问题，请自行购买更换。
6. 面板失效时，检查电池是否有电。
7. 请勿用金属遮盖/遮挡面板上的无线天线，考虑到金属结构对无线信号的影响，在现场使用过程中确保面板远离周边金属管道，混凝土钢结构等，以减少金属管道，混凝土钢结构等对无线信号的负面影响。如果面板和接收器之间有金属管道，混凝土钢结构等隔断，会对无线信号传输距离有影响。
8. 面板远离路由器等信号设备（zigbee和WiFi等）。
9. 面板避免在腐蚀性环境和含有有害物质，例如硫化物，卤化物邻苯二甲酸酯等环境中存储和使用。
10. 面板经常维持干净，可以用干布沾少量低浓度（70%-75%浓度）的酒精擦拭，切忌用水、含有腐蚀性的清洁剂清洁。



Matters need attention

1. Please read this manual carefully before installing or hazardous this product.
2. When installing the wall, ask a professional to install it.
3. The panel switch (radiation direction) should not be blocked by metal (conductor) objects, to ensure the optimum efficiency of signal transmission.
4. The panel switch should be kept away as far as possible from radiation source such as transformer and switching devices.
5. This product package contains complimentary batteries. If any ballooning, leakage, non-working phenomenon of the battery is inspected, please purchase a new one and replace by yourself.
6. When the panel fails, check whether the battery has electricity.
7. Considering the impact of metal structure on wireless signal, ensure that the remote controller is far away from the surrounding metal pipeline and steel reinforced concrete structure during the process of on-site use so as to minimize the negative impacts on wireless signal. Otherwise, signal transmission distance would be affected.
8. Keep the panel away from signal devices such as routers (zigbee and WiFi, etc.).
9. The panel shall be protected from corrosive environment and harmful substances such as sulfide and halide. Phthalates and other environments.
10. Always keep the panel clean, it is possible to wipe it with a small amount of low-concentration (70%-75% concentration) alcohol with dry cloth, but avoid cleaning it with water.



昕诺飞灯具（上海）有限公司
地址：上海市闵行区合川路2555号1幢二楼
邮编：200233

Signify Luminares (Shanghai) Co., Ltd
Address: 2F Building I, No.2555 Hechuan Road,
Minhang District, Shanghai
Zip code: 200233