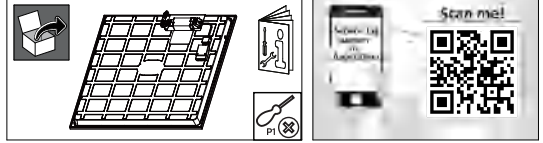


PHILIPS

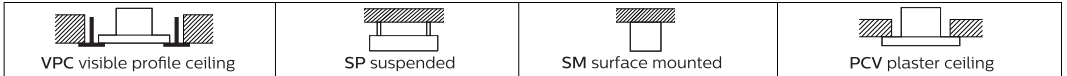
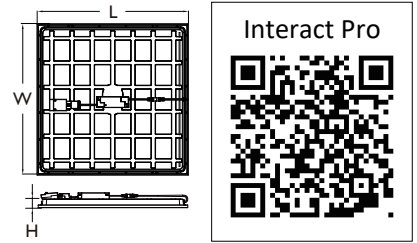
CoreLine Panel RC132V/RC133V DACH & UK



			RG0	220V 240V	50Hz 60Hz		Lifetime up to 100Khrs @L80	Ta 25 °C	Max. 35°C Min. -10 °C	GLOW WIRE 650 °C	
--	--	--	------------	----------------------	----------------------	--	-----------------------------	----------	-----------------------	-------------------------	--

	IP	IK	L×W×H1 (mm)	Quick connector	
RC133V G6 36S/840 PSU W62L62 NOC	IP40/IP20	IK03	620x620x34	Ledinaire	1.75
RC133V G6 36S/840 PSU W62L62 OC	IP40/IP20	IK02	620x620x34	Ledinaire	2.25
RC133V G6 36S/840 PSD W62L62 OC	IP40/IP20	IK02	620x620x35	Ledinaire	2.28
RC133V G6 29_36_43S/830_40 PSU W62L62 OC	IP40/IP20	IK02	620x620x35	Green	2.33
RC133V G6 29_36_43S/830_40 PSD W62L62 OC	IP40/IP20	IK02	620x620x35	Green	2.36
RC133V G6 36S/840 WIA W62L62 OC	IP40/IP20	IK02	620x620x35	Ledinaire	2.45
RC132V G6 31_36_43S/840 PSU W60L60CUCI	IP40/IP20	IK02	595x595x35	Ledinaire	2.12
RC132V G6 31_43S/840 PSU ELR IK03 60x60	IP40/IP20	IK03	595x595x35	Green	2
RC132V G6 36S/865 PSU W60L60 OC	IP44/IP20	IK02	595x595x37	Green	2.15

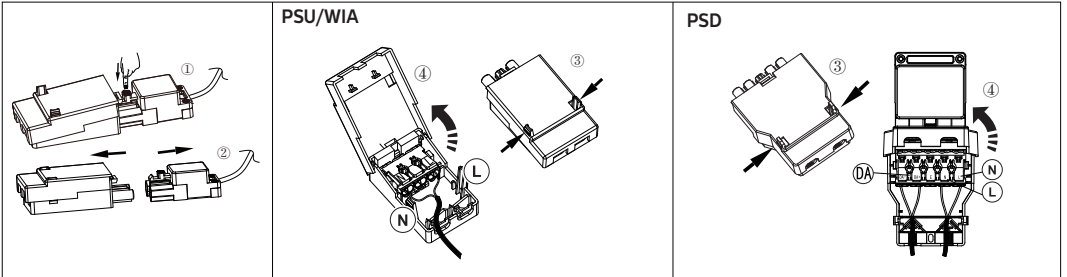
Lifetime Table	Lumen	CRI	50K hrs	100K hrs
	2900 - 4300lm	80	L90	L80
Energy efficiency class of light source				
C				



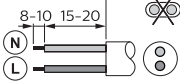
Available as accessory (Need to purchase separately)

 Suspension set: 911401809387 RC159Z Suspension set SME-4 WH (PSD) 911401809487 RC159Z Suspension set SME-3 WH (PSU)	 Safety cable: 911401809187 RC159Z Safety Cable
 Plaster ceiling set: 911401809287 RC159Z Plaster Ceiling SMB-PLC	 Surface mounted set: 911401807787 RC159Z SMB W60L60 911401807887 RC159Z SMB W62L62

Power Connection

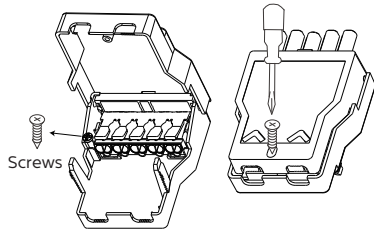
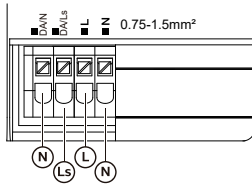


PSD Touch & Dim



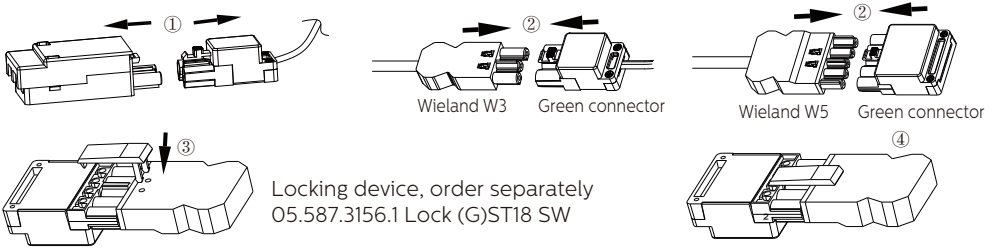
PSU/WIA/PSD

60227 IEC52
2 x 0.75-1.5 mm²
Ø6-9mm

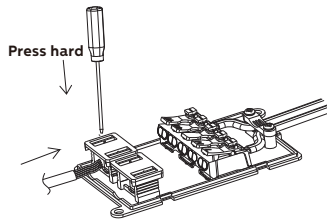
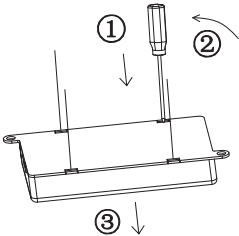


PSU/WIA/PSD
Needs screw fix
60227 IEC52
2 x 2.5 mm²
Ø8-11mm

Compatible with Wieland W3, W5 connector:



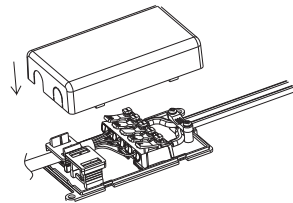
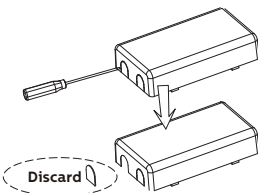
PSD



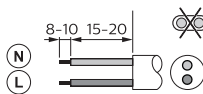
Blue 6 10
DA/N
DA/Ls
Brown 2x0.75-1.5mm²
φ 6-9mm

Blue 6 10
N
Brown L 2x0.75-1.5mm²
φ 6-9mm

Black/DA-
White/DA+
Blue/N
Brown/L 4x0.75mm²
φ 8-10mm

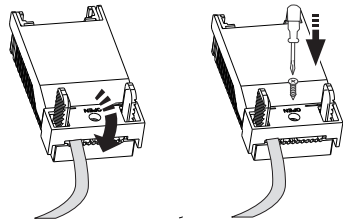


PSU



PSU/PSD

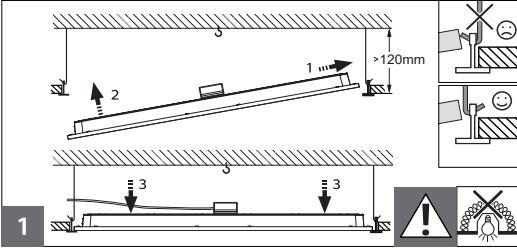
60227 IEC52
2 x 0.75-1.5 mm²
Ø6-9mm



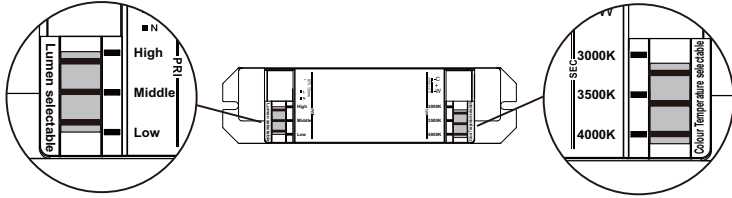
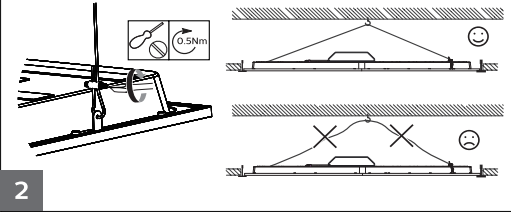


VPC Visible Profile Ceiling/ Lay-In mounting

Optional with
911401809187 RC159Z Safety Cable

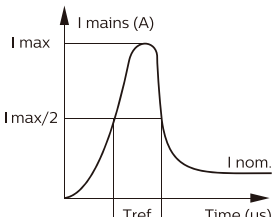


Safety cable



830/840 CRI80	Lumen selectable	3000K	3500K/4000K	Wattage	lout
	High	4000lm	4300lm	31W	650mA
	Middle	3400lm	3600lm	26W	550mA
	Low	2900lm	3100lm	22W	480mA

Inrush current



	PSU				PSD				WIA	
	22.5W	26W	31W	38W	23.5W	26W	31W	38W		
Electrical characteristics										
I _{max} (A)	20	16	20	22	22.6	25.2	26	26.8	4.8	
T _{ref} (us)	200	200	220	250	254	260	260	264	56	
No. of luminaires max.										
MCB										
B-10A	14	18	13	12	7	9	8	8	32	
B-16A	23	30	21	20	11	17	15	15	50	
C-10A	24	32	23	21	11	17	15	15	52	
C-16A	40	51	37	33	17	29	28	27	85	

Installation of Emergency unit (only applied for product with IK rating of IK03)

Installation of Emergency Lighting Kit

(Not included, order separately)

This product is only compatible with:

912401483602 EM300V ELB ELP3 kit LV 3.6V 4900mAh LB

Rated lumen output in emergency mode by emergency unit: min 380lm

