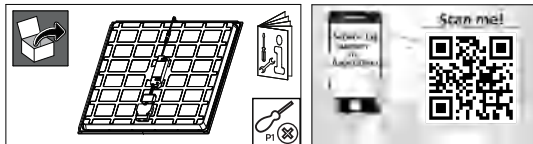


PHILIPS

CoreLine Panel RC132V CPC



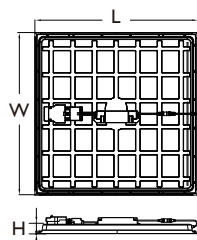
			RG0	220V 240V	50Hz 60Hz		Lifetime up to 100Khrs @L80	Ta 25 °C	Max. 35°C Min. -10 °C	GLOW WIRE 650 C	
--	--	--	------------	----------------------	----------------------	--	-----------------------------	----------	-----------------------	------------------------	--

IP	IK	L×W×H1(mm)		Energy efficiency class of light source
RC132V G6 36S/UE840 PSD 599x599SQ OC CPC	IP40/IP20	IK02 600x600x35	2.25	C

Available as accessory (Need to purchase separately)

Mounting brackets:
911401888587 RC159Z CPC bracket kit

3.5x6 x8
4x8 x4



Power Connection

① ② ③ ④

8-10 15-20

60227 IEC52
2 x 0.75-1.5 mm²
Ø 6-9mm

PSD Touch & Dim

DAWN DALLS L Z 0.75-1.5mm²

N L L N

Screws

Needs screw fix
60227 IEC52
2 x 2.5 mm²
Ø 8-11mm

Compatible with Wieland W5 connector:

① ② ③ ④

Wieland W3 Green connector

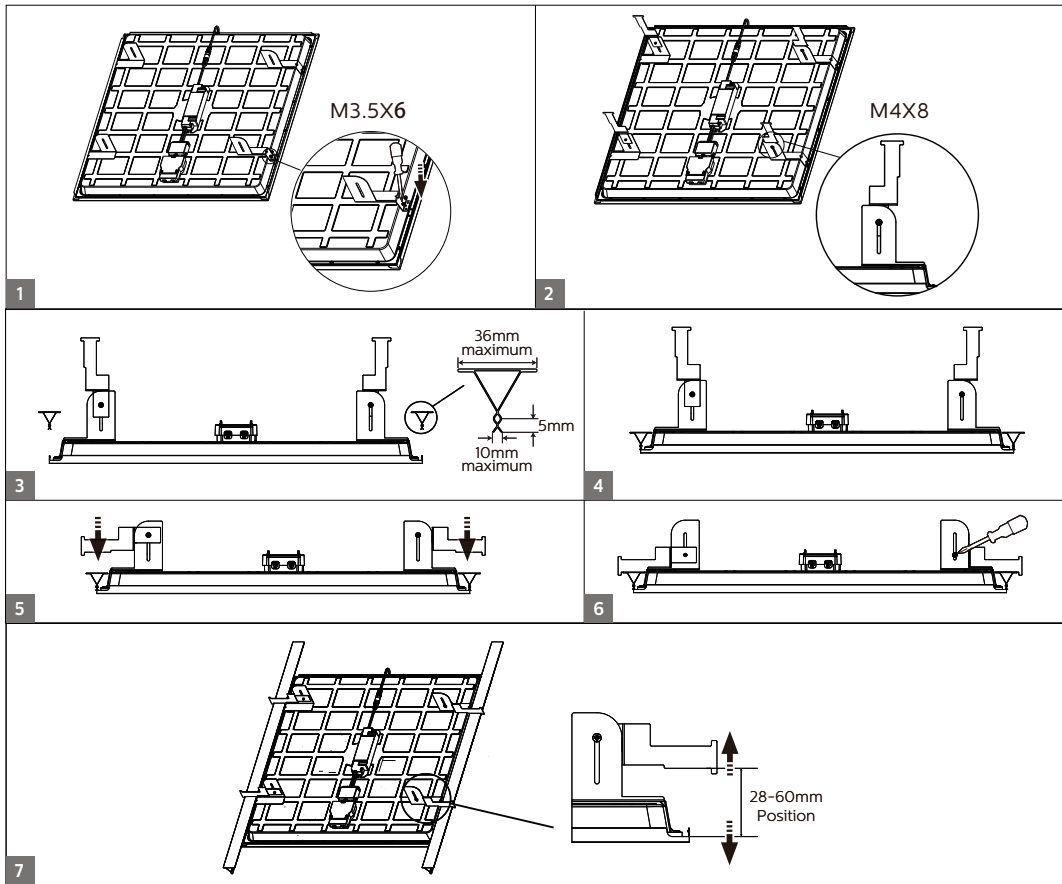
Wieland W5 Green connector

Locking device, order separately
05.587.3156.1 Lock (G)ST18 SW

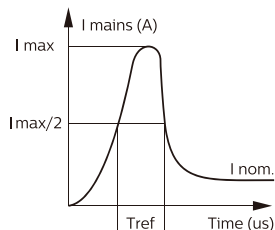


CPC Recessed mounting in Concealed profile ceilings

Mounting brackets
911401888587 RC159Z CPC bracket kit



Inrush current



	PSD
	23.5W
Electrical characteristics	
I_{max}(A)	22.6
T_{ref} (us)	254
MCB	No. of luminaires max.
B-10 A	7
B-16A	11
C-10 A	11
C-16A	17