

PHILIPS

MasterConnect

New feature:
hybrid
networks
available

Master connected lighting

Connected, simple, scalable,
and standardized

Contents

3 Introduction	4 Achieve seamless connectivity
6 Use cases	7 Portfolio
8 Three-tier model categories	13 Open standards
13 New features, new name and new applications	

Connected lighting made simple, scalable, and standardized

Taking the first steps into connected lighting can be challenging and complex. Until now. Philips MasterConnect and its growing portfolio of components offer a simple and smart way to add connectivity to your portfolio.

The Philips MasterConnect system enables you to create connected lighting installations that are simple and scalable, with no hassle during installation and commissioning. Our reliable wireless platform and products offer you the opportunity to tap into all the benefits of connected lighting, like automation, human-centric lighting or energy savings. What's more, MasterConnect combined with LED lighting offers significant savings: up to 40% compared to non-controlled LED lighting and up to 75% compared to conventional lighting. Making it also a more sustainable choice.

All combined with our continuously improved software and added hardware for many different applications, make that you can master connected lighting in no time, anytime.

Philips MasterConnect: making your step into connected lighting simple.

Achieve seamless connectivity

Philips MasterConnect is an innovative way to enable lighting components to work seamlessly together to deliver all the amazing benefits of lighting automation. It guarantees the reliable interoperability of luminaires, drivers, sensors, switches, and even gateways. That's because the entire solution is built around Bluetooth Low Energy (BLE) and Zigbee protocols. So, it also offers the flexibility to upgrade, enhance and expand your connected lighting at any time in the future.

Easy to use and install

The lighting network set up and configuration is designed to be quick and simple. It's easy to install, add and commission luminaires just by using the mobile app. No specific tooling or extensive training is needed. This saves time and money by enabling installers to configure a wireless connected network in the field without any IT hassles. And once it's set up, the solution works independently and requires no manual input.

One platform for all applications and configurations

With Philips MasterConnect, you can use the same system approach for every project – even when there are large groups of connected luminaires. Our Philips MasterConnect components can be used in a variety of applications including schools, offices, hospitals, retail applications and even warehouse and assembly areas. All these applications can be set up using one app – the Philips MasterConnect app.

A three-tier model

It's a completely scalable concept with wireless components that are easy to design into the lighting network to add more features and functionality whenever they are required. From simple stand-alone solutions to a sophisticated gateway solution - and anything else in between, you can create every configuration of connected system using the same suite of components.

Future-proof installations

We are continually adding new features to our products and improving the performance of our app and firmware. Thanks to the option of over-the air (OTA) updates, you can easily

upgrade the components to feature the latest firmware. Which means you can make use of any improvements you need – without the need to exchange your hardware.

Open standards, more choice

We're committed to pioneering new advances in the connected lighting industry. That's why our solutions are based on Open Source standards like BLE and Zigbee. This allows us to work with a wide range third-party products like wireless switches to extend the Philips MasterConnect system. So, you can break down the barriers to connected lighting, and take confident steps towards a brighter, connected future.

New feature: hybrid networks

For more flexibility, we have added the option to create hybrid networks with to our Philips MasterConnect App. With this new app update, it is now possible to combine luminaires with integrated wireless sensor and luminaires with wireless radio nodes in the same MasterConnect group.

This new feature enables a variety of new possibilities such as combining decorative and functional lighting in a office building, or using a wireless node as a receiving node in a network of luminaires with a luminaire-integrated sensors.

The hybrid feature is available for all devices on the latest MasterConnect firmware.



Xitanium 36W/m 0.15-1.05A 48V MC 230V



EasyAir SNS212/w MC



Philips MasterConnect use cases at a glance

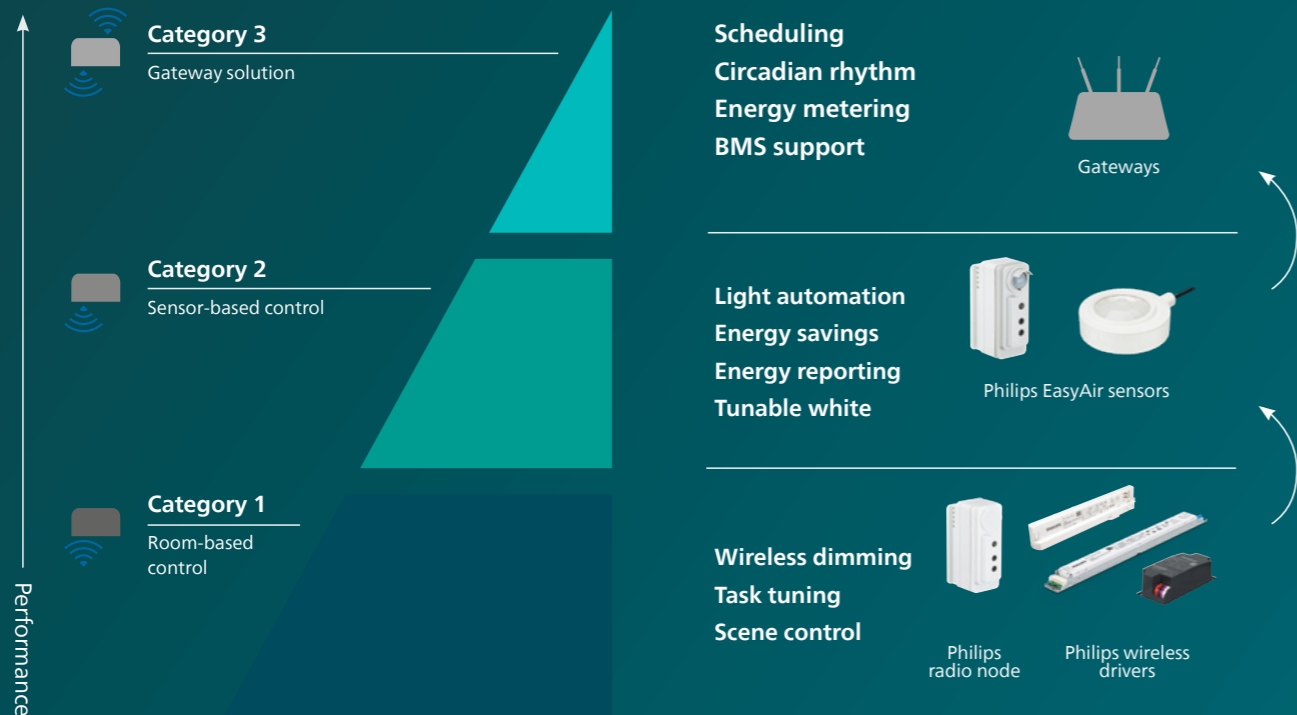


Figure 1: Three levels of lighting connectivity.

Portfolio

Accessories



EasyAir 2B switch



EasyAir 4B switch

Wireless nodes & drivers



EasyAir SNS410/w MC



Xitanium 35W 0.08-0.35A 220V MC21 230V



Xitanium 60W 0.15-0.5A 220V MC21 230V



Xitanium 36W/m 0.15-1.05A 48V MC 230V



Xitanium 42W/a 0.15-1.05A 42V MC 3CB



Xitanium 42W/a 0.15-1.05A 42V MC 3CG



Xitanium 42W/a 0.15-1.05A 42V MC 3CW



Xi 45W 0.3-1.2A 48V MC FlexTune 230V

Wireless Sensors (luminaire integration)



EasyAir SNS212/w MC



EasyAir SNS212/g MC



EasyAir SNS212/b MC



EasyAir SNH210 MC



EasyAir SNHB210 MC

Wireless Sensors (external)



EasyAir Occu ZGP sensor MC



EasyAir Occu-DL ZGP sensor MC



LCN3110/05 OCC SENSOR IA CM IP65 WH



LCN3120/05 OCC-DL SENSOR IA CM IP65 WH

Let's take a look at our three-tier model in more detail on the next pages

Tier model Category 1

Get started with a simple, stand-alone solution

This cost-effective option uses the Philips MasterConnect app to set up a simple network with wireless drivers and manual switches to control lighting functions.

- Enjoy wireless dimming or scene setting.
- Personalize light levels to suit different tasks and needs.
- Enable energy savings with occupancy detection and daylight harvesting by adding external room-based sensors like the Philips EasyAir Occupancy Daylight ZGP sensors.

In this connected lighting network, there's no need for a gateway or hard wiring. The lighting controls and dimming functions are done by wireless switches and the network is fully functional at all times – even without the Philips MasterConnect app.

Ideal for:

Offices (meetings rooms, corridors), schools (general areas, bathrooms, classrooms) and industry (parking spaces, storage rooms).

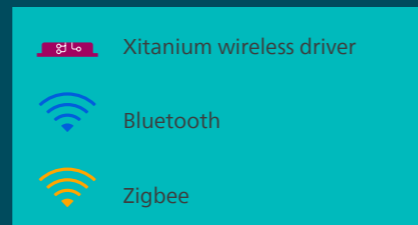


Figure 2: **Want a stand-alone connected lighting network with wireless dimming?** Easy. Just download the app and configure the drivers into a network.

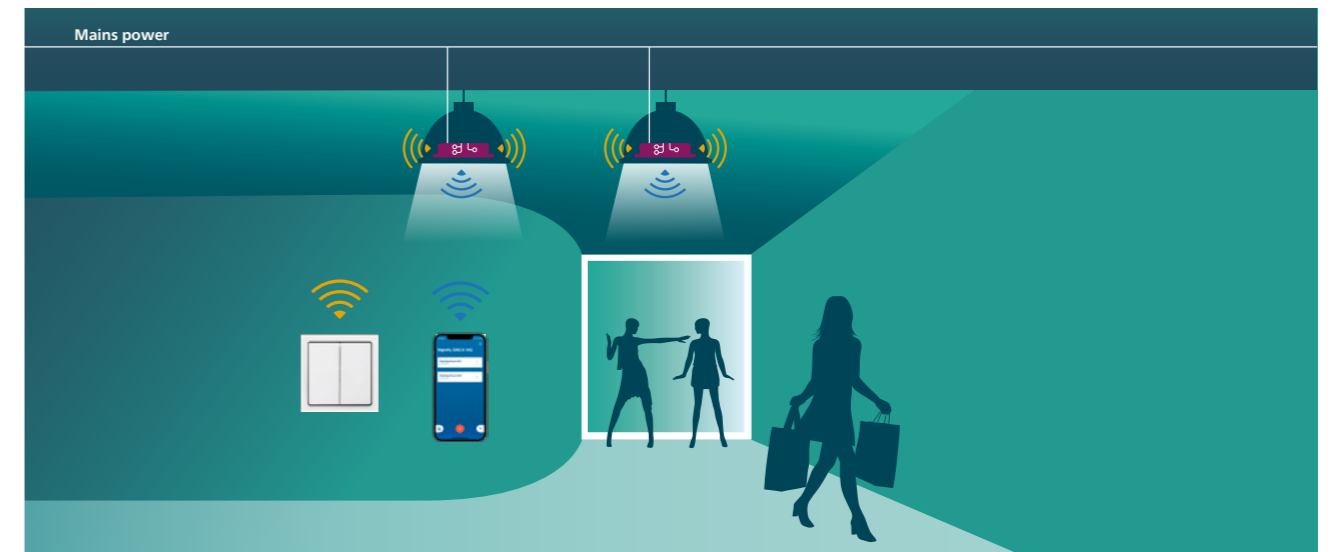


Figure 3: **Need to expand the network?** No problem. Use the app to add more luminaires to the existing network at any time.

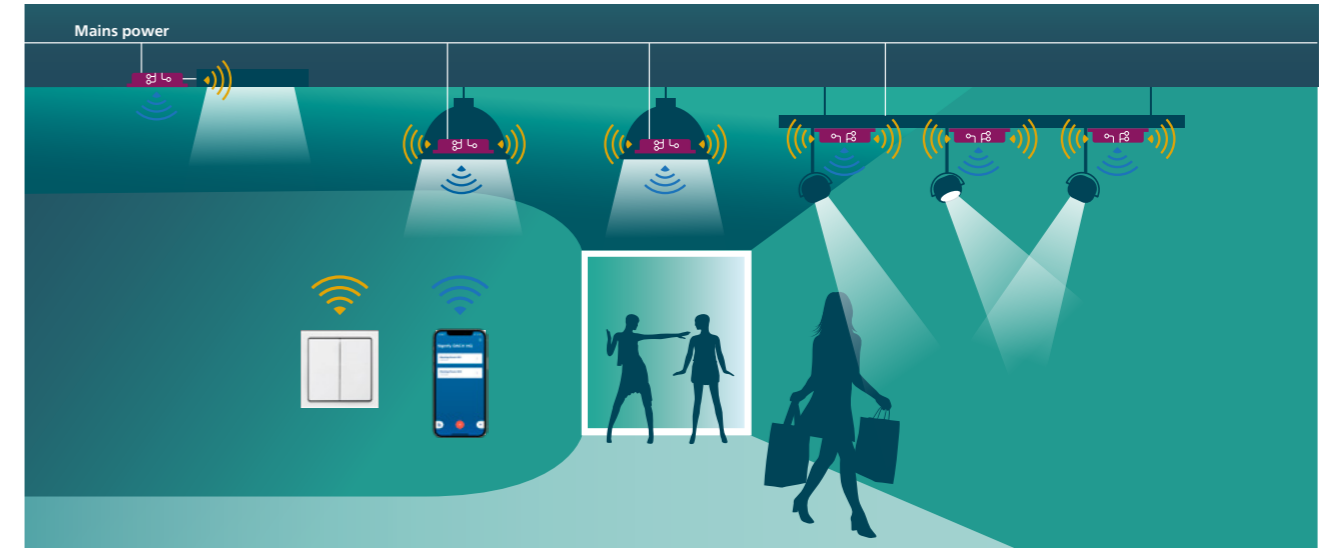


Figure 4: **Want more control over areas?** Simply add more functions to your lighting network by adding room-based sensors. Sensors like the Philips EasyAir Occupancy Daylight.



Get more control with a stand-alone lighting network with granular dimming

This solution offers an extra degree of control over your lighting system for valuable energy savings and a more comfortable lighting experience.

- Use motion detection to switch lights on and off, up, or down with a Philips EasyAir SNS212 sensor in every luminaire.
- Enjoy touchless dimming control per individual, group, or subgroups for optimum comfort.
- Maximize energy savings with motion detection and daylight harvesting.
- Access energy reports via the phone app.

This wireless lighting network set up enables automated lighting without a gateway. It is a great solution for refurbishment projects offering re-use of existing DALI luminaires to maximize value for money.

Ideal for:

Offices (corridors, conference rooms), schools (classrooms, canteen, toilets) and hospitals (wards, reception).

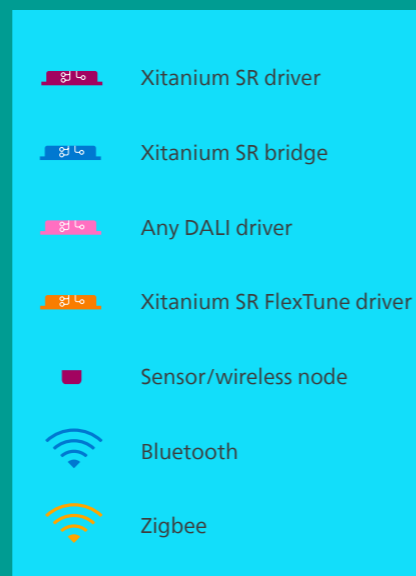


Figure 5: **Want an extra degree of control?**
Just add EasyAir SNS212 MC sensors to every SR-powered luminaire in your network.

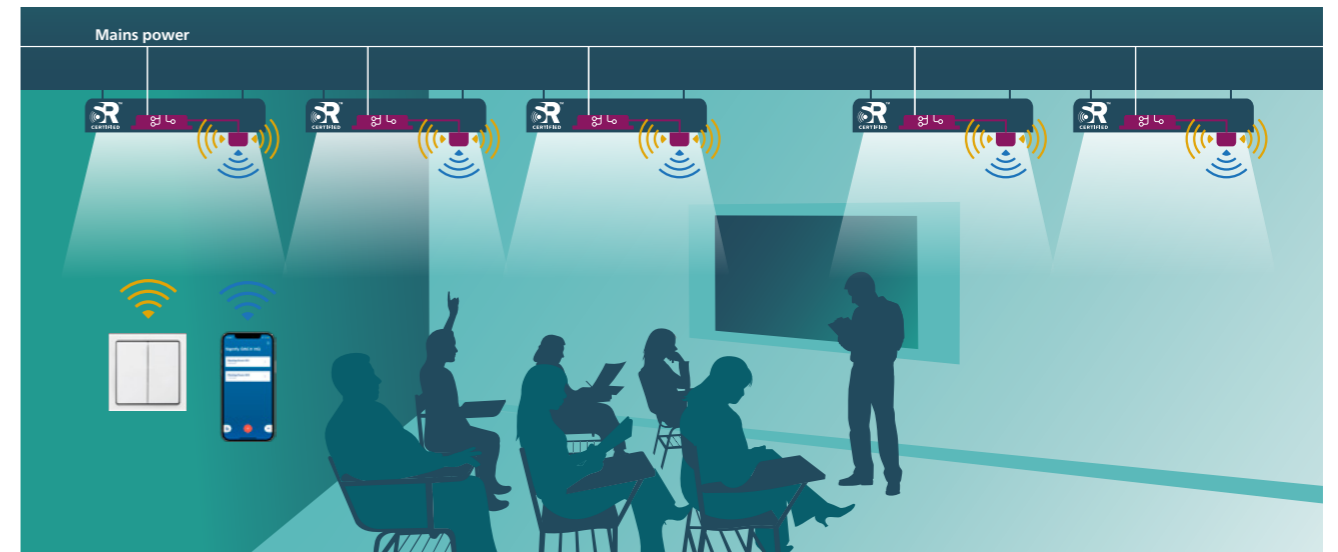


Figure 6: **Using existing wired DALI luminaires?**
Simple. Add them into the network at any time using an SR bridge.

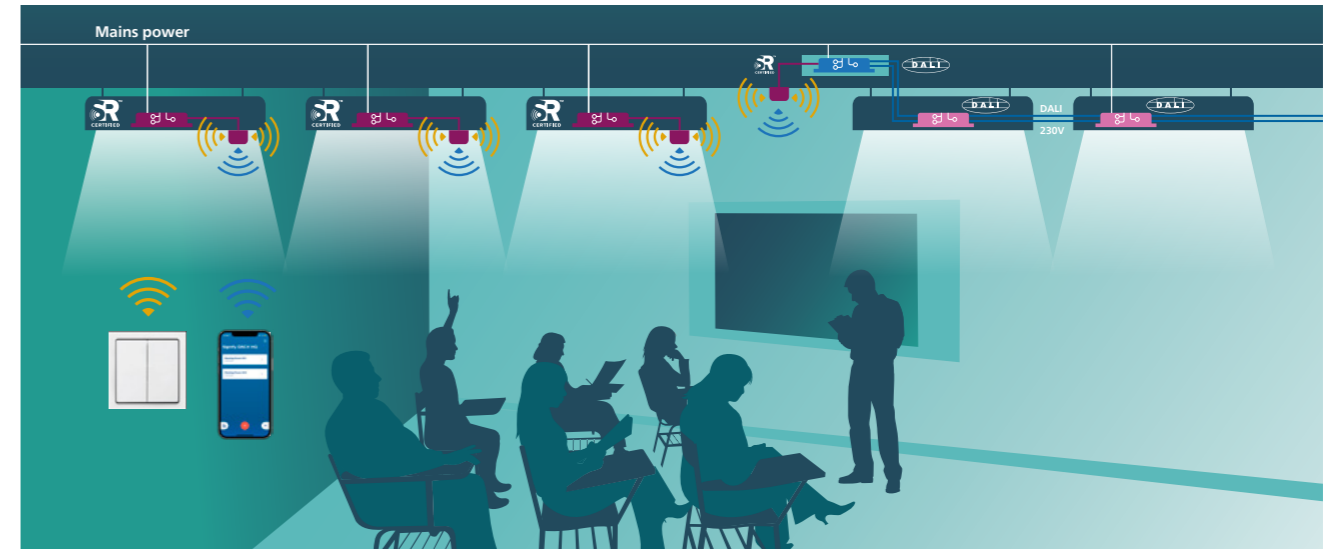
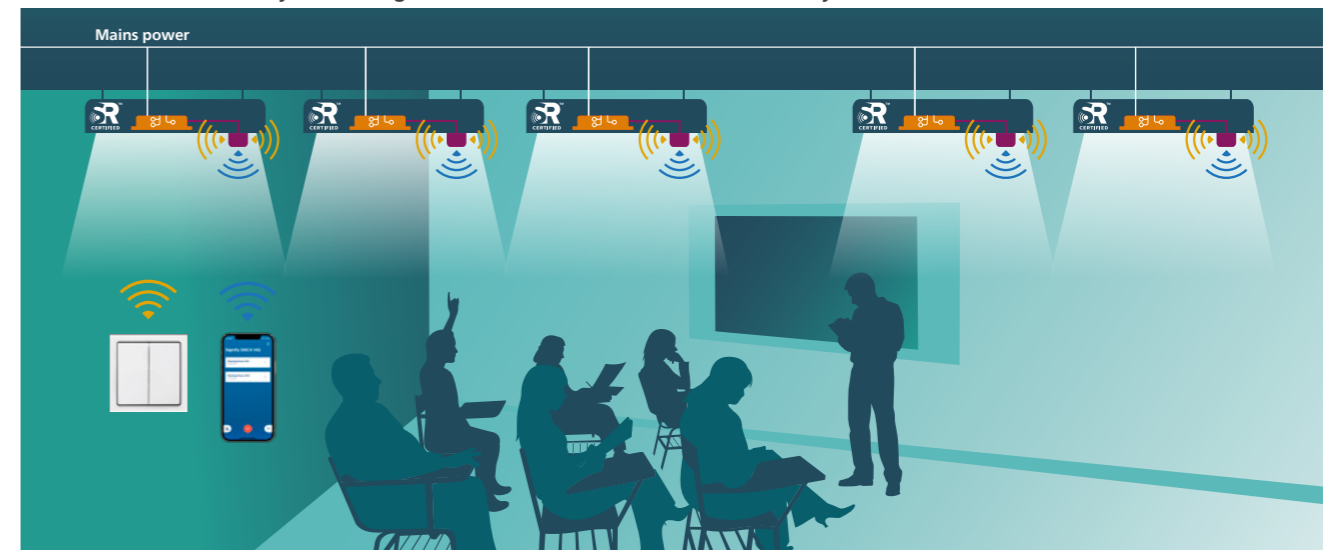


Figure 7: **Need more ambience?**
Create a tunable white system using a Xitanium SR FlexTune driver and EasyAir SNS212 MC sensor.



Get full integration with an IoT solution with gateway

This fully integrated, connected network adds value beyond illumination to deliver significant commercial, operational, and financial advantages.

- Builds on category 1 and 2 solutions with a Zigbee gateway.
- Adds advanced features such as scheduling, monitoring, and energy reporting.
- Enables complex scenarios for different lighting behaviors.
- Includes direct reporting via the gateway dashboard to reduce costs and downtime.

This Internet of Things (IoT) category solution works with Signify-trusted gateway partners and is enabled by gateway software.

Ideal for:

Ambitious infrastructure plans in offices, schools, retail, and hospitality applications.

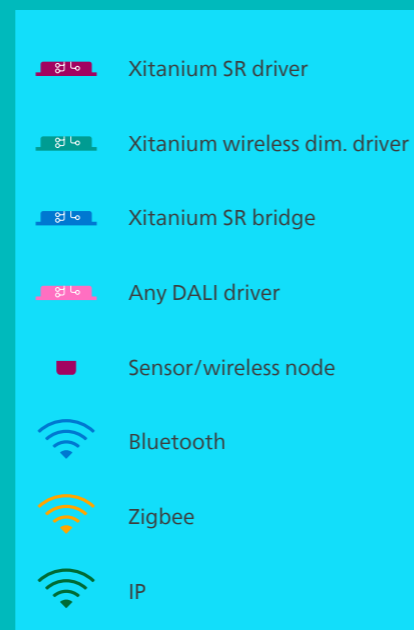
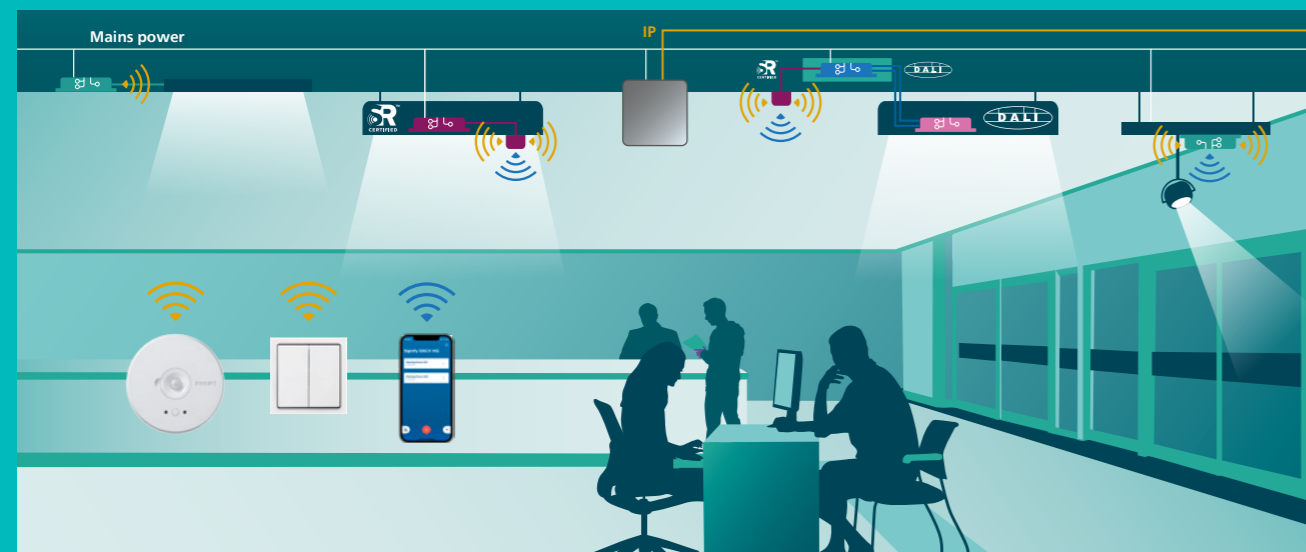


Figure 8: An integrated IoT solution for indoor lighting architecture.



All open standards within one connected lighting network

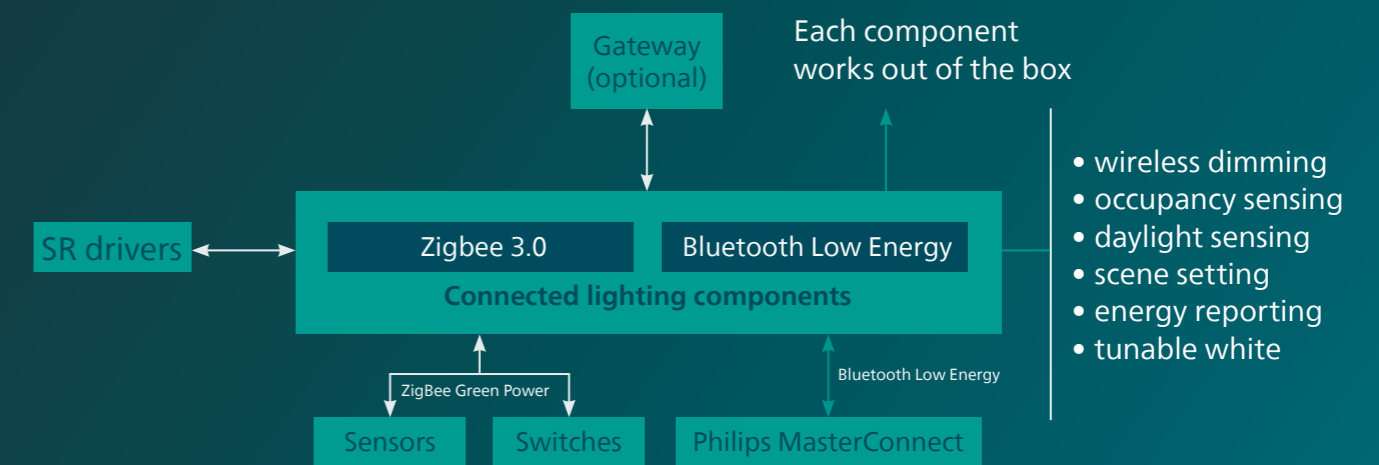


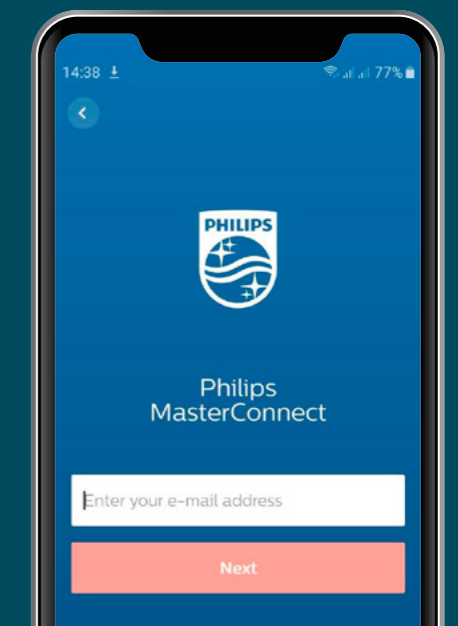
Figure 9: Philips MasterConnect enables connected lighting networks based on open standards.

New new features, new possibilities, new app update

Download the app today

Philips MasterConnect has been updated to enable more features and flexibility for all projects.

Take the next steps towards simple, scalable, standardized connected lighting. To learn more about lighting components that work with Philips MasterConnect for a wide range of applications, access www.philips.com/masterconnectsystem. Or download the Philips MasterConnect and get connected now.





© 2024 Signify Holding. All rights reserved. The information provided herein is subject to change, without notice. Signify does not give any representation or warranty as to the accuracy or completeness of the information included herein and shall not be liable for any action in reliance thereon. The information presented in this document is not intended as any commercial offer and does not form part of any quotation or contract, unless otherwise agreed by Signify. Philips and the Philips Shield Emblem are registered trademarks of Koninklijke Philips N.V. All other trademarks are owned by Signify Holding or their respective owners.

www.philips.com/masterconnectsystem