



Contractor-grade MainsFit (UL Type-B) T8

CNG LEDtube 1200mm 14W 865 T8 WV

CorePro, LEDtube, T8, Mains, 1200 mm, 100-240 V, 14 W, 32-36W TL-D, 6500 K, 1600 lm, 25000 hour(s)

The Contractor-grade MainsFit (UL Type B) lamps are designed to provide simple retrofit solution to move from traditional fluorescent lamps to energy saving LEDs. This ballast bypass lamp is similar to other UL Type B lamps in the Philips family by providing proven energy savings, long life (50k hours), surge suppression and industry leading safety features. All lamps in the Contractor-grade family are also double-ended to help simplify the installation.

Product data

General Information		Operating and Electrical	
Cap-Base	G13	Correlated Color Temperature (Nom)	6500 K
Nominal lifetime	25,000 hour(s)	Luminous Efficacy (rated) (Nom)	114 lm/W
Switching Cycle	50,000	Color Consistency	<6
Lighting Technology	LEDtube	Color rendering index (CRI)	80
Warranty period	3 years	LLMF At End Of Nominal Lifetime (Nom)	70 %
		Photobiological safety according to EN 62471	RGO
Light Technical			
Color Code	865 [CCT of 6500K]	Input Frequency	50 to 60 Hz
Beam Angle (Nom)	240 degree(s)	Power Consumption	14 W
Luminous Flux	1,600 lm	Lamp Current (Max)	146 mA
Color Designation	Cool Daylight	Lamp Current (Min)	63 mA

Contractor-grade MainsFit (UL Type-B) T8

Starting Time (Nom)	0.5 s
Warm-up time to 60% light	0.5 s
Power Factor (Fraction)	0.9
Voltage (Nom)	100-240 V
LED alternative to fluorescent lamp power	32-36W TL-D
Ballast Compatibility	Mains

Temperature

T-Case Maximum (Nom)	60 °C
----------------------	-------

Controls and Dimming

Dimmable	No
----------	----

Mechanical and Housing

Product Length	1,200 mm
Bulb Shape	T8
Net Weight (Piece)	0.220 kg

Approval and Application

Energy Saving Product	Yes
-----------------------	-----

Approval Marks	RoHS compliance KEMA Keur certificate
EU RoHS compliant	Yes
Ambient temperature range	-20 to +45 °C

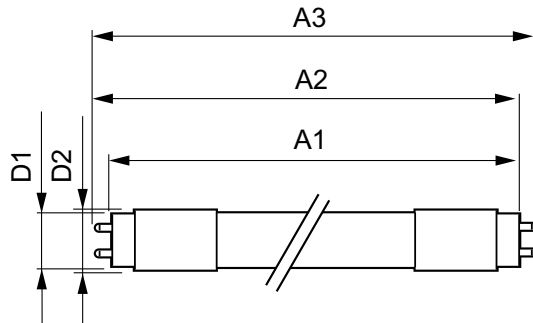
Application Conditions

Wireless Technology	Not applicable
---------------------	----------------

Product Data

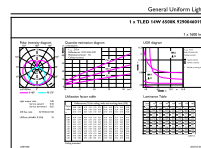
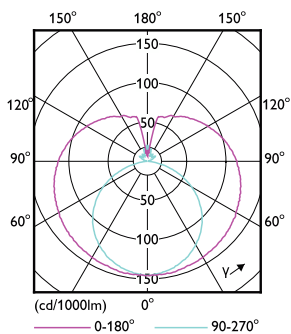
Order product name	CNG LEDtube 1200mm 14W 865 T8 WV
Full product name	CNG LEDtube 1200mm 14W 865 T8 WV
Full product code	872110305827000
Order code	929004601912
Material Nr. (12NC)	929004601912
Numerator - Quantity Per Pack	1
EAN/UPC - Product/Case	8721103058270
Numerator - Packs per outer box	25
EAN/UPC - Case	8721103058287

Dimensional drawing



Product	D1	D2	A1	A2	A3
CNG LEDtube 1200mm 14W 865 T8 WV	25.7 mm	28 mm	1,199.4 mm	1,206.5 mm	1,213.6 mm

Photometric data

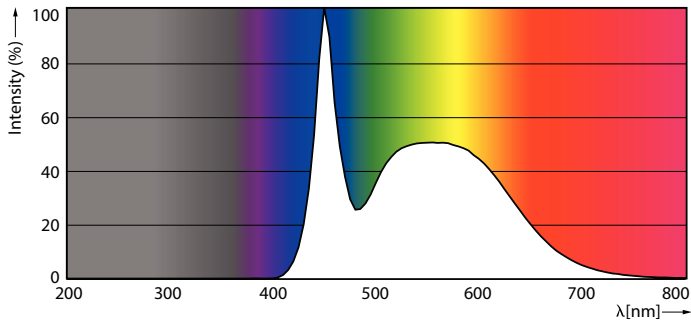


Light Distribution Diagram - CNG LEDtube 1200mm 14W 865 T8 WV

General uniform lighting - CNG LEDtube 1200mm 14W 865 T8 WV

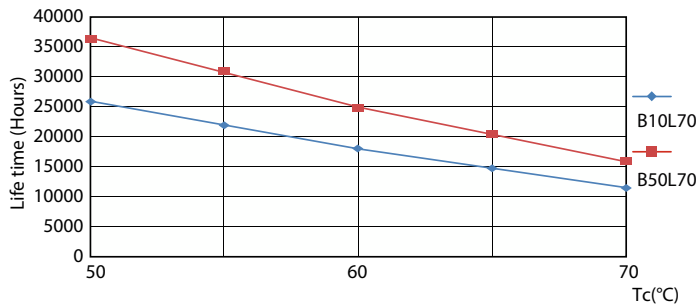
Contractor-grade MainsFit (UL Type-B) T8

Photometric data

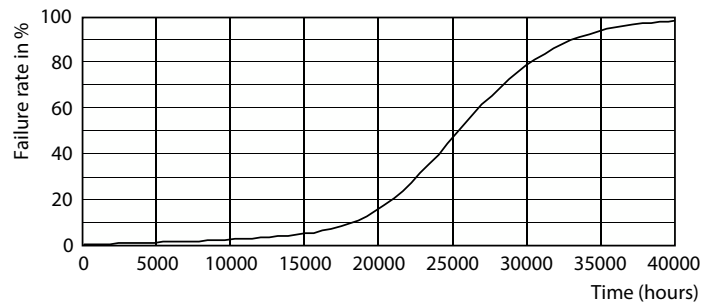


Spectral Power Distribution Colour - CNG LEDtube 1200mm 14W 865 T8 WV

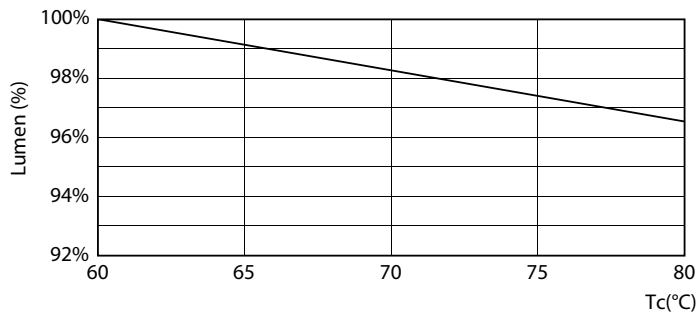
Lifetime



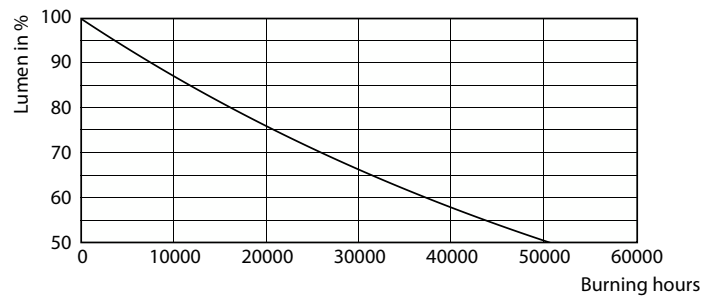
LifetimeVsTc



Life Expectancy Diagram



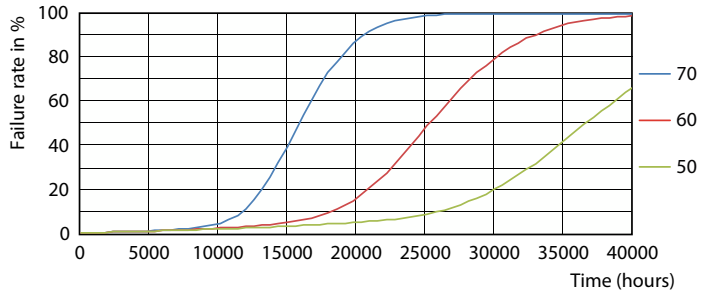
Lumen Maintenance Diagram - CNG LEDtube 1200mm 14W 865 T8 WV



Lumen Maintenance Diagram - CNG LEDtube 1200mm 14W 865 T8 WV

Contractor-grade MainsFit (UL Type-B) T8

Lifetime



FailureRate

