



MasterClass MainsFit (UL Type-B) T8

11.5T8/MAS/48-835/MF21/G/DIM UE 25/1

MasterClass, LEDtube, T8, 1200 mm, 11.5 W, 3500 K, 2100 lm, 50000 hour(s)

The MasterClass MainsFit (UL Type B) T8 lamps are designed to be the perfect retrofit solution to move from traditional fluorescent lamps to energy saving LEDs. This ballast bypass lamp has everything needed built into the lamp with proven energy savings, long life (70k hours), surge suppression and industry leading safety features. All lamps in the MasterClass MainsFit family are double-ended to help simplify the installation. In addition, all lamps meet the Philips standards for light quality so that end users will be in a comfortable environment regardless of the MasterClass MainsFit lamp type.

Product data

General Information		Color Consistency	
Cap-Base	G13	Color rendering index (CRI)	80
Nominal lifetime	50,000 hour(s)	LLMF At End Of Nominal Lifetime (Nom)	70 %
Switching Cycle	50,000		
Lighting Technology	LEDtube	Operating and Electrical	
		Input Frequency	50 to 60 Hz
		Power Consumption	11.5 W
		Lamp Current (Max)	130 mA
		Lamp Current (Min)	48 mA
		Wattage Equivalent	32 W
		Starting Time (Nom)	0.5 s
		Warm-up time to 60% light	0.5 s
		Power Factor (Fraction)	0.9
Light Technical			
Color Code	835 [CCT of 3500K]		
Beam Angle (Nom)	220 degree(s)		
Luminous Flux	2,100 lm		
Color Designation	White (WH)		
Correlated Color Temperature (Nom)	3500 K		
Luminous Efficacy (rated) (Nom)	182 lm/W		

MasterClass MainsFit (UL Type-B) T8

Voltage (Nom)	120-277 V
UL Type	UL Type B

Temperature

T-Case Maximum (Nom)	50 °C
----------------------	-------

Controls and Dimming

Dimmable	Only with specific dimmers
----------	----------------------------

Mechanical and Housing

Bulb Finish	Frosted
Bulb Material	Glass
Product Length	1,200 mm
Bulb Shape	T8
Net Weight (Piece)	0.200 kg

Approval and Application

Energy Saving Product	Yes
Approval Marks	RoHS compliance UL certificate DLC compliance
EU RoHS compliant	Yes
Ambient temperature range	-20 to +45 °C

Post-consumer recycled plastic material ratio	0 %
---	-----

Application Conditions

can it be used in closed luminaires	Yes
Wireless Technology	Not applicable

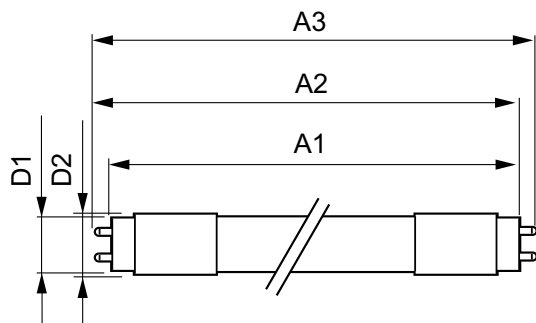
Sustainability Data

Product non-virgin material ratio	0 %
-----------------------------------	-----

Product Data

Order product name	11.5T8/MAS/48-835/MF21/G/DIM UE 25/1
Full product name	11.5T8/MAS/48-835/MF21/G/DIM UE 25/1
Order code	929004282804
Material Nr. (12NC)	929004282804
Numerator - Quantity Per Pack	1
EAN/UPC - Product/Case	046677607456
Numerator - Packs per outer box	25
EAN/UPC - Case	50046677607451

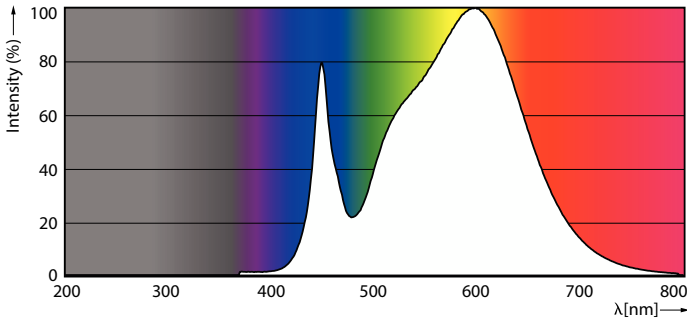
Dimensional drawing



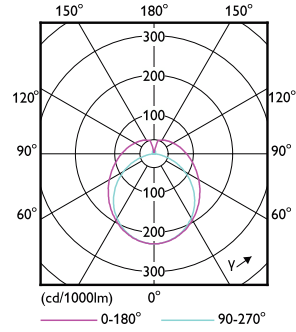
Product	D1	D2	A1	A2	A3
11.5T8/MAS/48-835/MF21/G/DIM UE 25/1	25.7 mm	27.9 mm	1,199.4 mm	1,206.5 mm	1,213.6 mm

MasterClass MainsFit (UL Type-B) T8

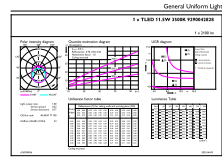
Photometric data



Spectral Power Distribution Colour - 11.5T8/MAS/48-835/MF21/G/DIM UE 25/1

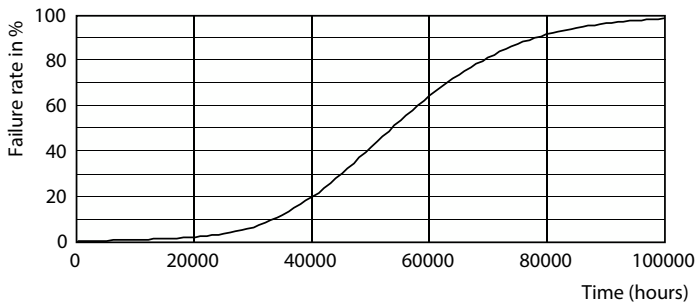


Light Distribution Diagram - 11.5T8/MAS/48-835/MF21/G/DIM UE 25/1

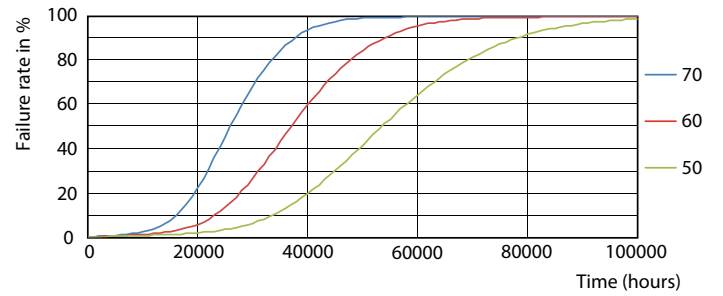


General uniform lighting - 11.5T8/MAS/48-835/MF21/G/DIM UE 25/1

Lifetime



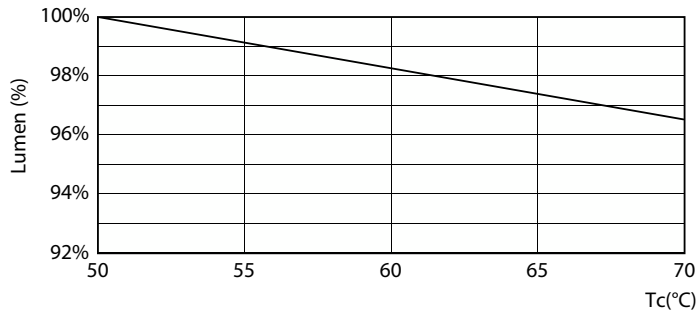
Life Expectancy Diagram



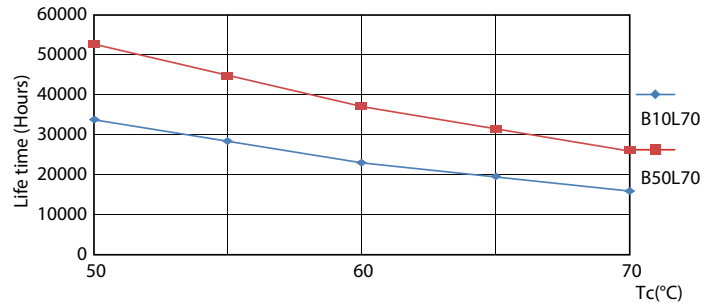
FailureRate

MasterClass MainsFit (UL Type-B) T8

Lifetime



Lumen Maintenance Diagram - 11.5T8/MAS/48-835/MF21/G/DIM UE 25/1



LifetimeVsTc



Lumen Maintenance Diagram - 11.5T8/MAS/48-835/MF21/G/DIM UE 25/1

