



CorePro LED PLL

CorePro LED PLL HF/Mains 8W 830 4P

CorePro, LED, PL-L, HF/Mains, 218 mm, 8 W, 18W PL-L, 3000 K, 960 lm, CRI 80, 30000 hour(s)

Philips CorePro LED PLL is the ideal uplamping solution for downlights & luminaires in a wide range of general lighting applications. It integrates a LED light source into a traditional fluorescent form factor to offer superb energy savings over a lifetime that's twice as long as fluorescent alternatives.

Product data

General Information	
Cap-Base	2G11
Nominal lifetime	30,000 hour(s)
Switching Cycle	200,000
Lighting Technology	LED
Flux measurement reference	Sphere
Warranty period	3 years
Light Technical	
Color Code	830 [CCT of 3000K]
Beam Angle (Nom)	160 degree(s)
Luminous Flux	960 lm
Color Designation	White (WH)
Correlated Color Temperature (Nom)	3000 K
Luminous Efficacy (rated) (Nom)	120 lm/W
Color Consistency	<6
Color rendering index (CRI)	80
LLMF At End Of Nominal Lifetime (Nom)	70 %

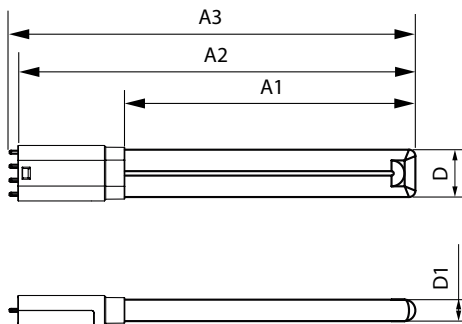
Photobiological safety according to EN 62471	RG0
Operating and Electrical	
Input Frequency	50 to 60 Hz
Power Consumption	8 W
Lamp Current (Nom)	43 mA
Wattage Equivalent	18 W
Starting Time (Nom)	0.5 s
Warm-up time to 60% light	0.5 s
Power Factor (Fraction)	0.9
Voltage (Nom)	220-240 V
LED alternative to fluorescent lamp power	18W PL-L
Inrush current at mains	3
Max. lamp no. on MCB B type 10A - Mains	211
Max. lamp no. on MCB B type 10A – EM ballast without Compensation Capacitor.	-
Max. lamp no. on MCB B type 10A – EM ballast with Compensation Capacitor.	-
Max. lamp no. on MCB B type 16A - Mains	337

CorePro LED PLL

Max. lamp no. on MCB B type 16A – EM ballast without Compensation Capacitor.	-
Max. lamp no. on MCB B type 16A – EM ballast with Compensation Capacitor.	-
Ballast Compatibility	HF/Mains
Temperature	
T-Case Maximum (Nom)	65 °C
Controls and Dimming	
Dimmable	No
Mechanical and Housing	
Bulb Finish	Frosted
Bulb Material	Glass
Product Length	218 mm
Bulb Shape	PL-L
Net Weight (Piece)	0.100 kg
Approval and Application	
Energy Efficiency Class	E
Energy Consumption kWh/1000 h	8 kWh
EPREL Registration Number	2299091
CE mark	Yes

EU RoHS compliant	Yes
Flickering value (PstLM) - Flickering value as per EN 61000-3-3	1
Stroboscopic effect visibility measure (SVM)	0.4
Ambient temperature range	-20 to +45 °C
Application Conditions	
can it be used in closed luminaires	Yes
Product Data	
Order product name	CorePro LED PLL HF/Mains 8W 830 4P
Full product name	CorePro LED PLL HF/Mains 8W 830 4P
Full product code	872110305087800
Order code	929004267402
Material Nr. (12NC)	929004267402
Numerator - Quantity Per Pack	1
EAN/UPC - Product/Case	8721103050878
Numerator - Packs per outer box	10
EAN/UPC - Case	8721103050885

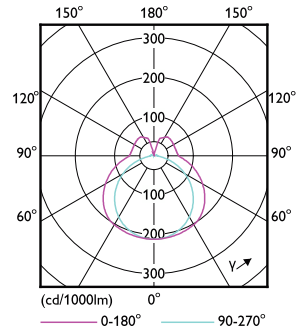
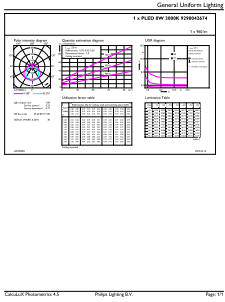
Dimensional drawing



Product	D1	D	A1	A2	A3
CorePro LED PLL HF/Mains 8W 830 4P	17 mm	38 mm	134 mm	218 mm	224 mm

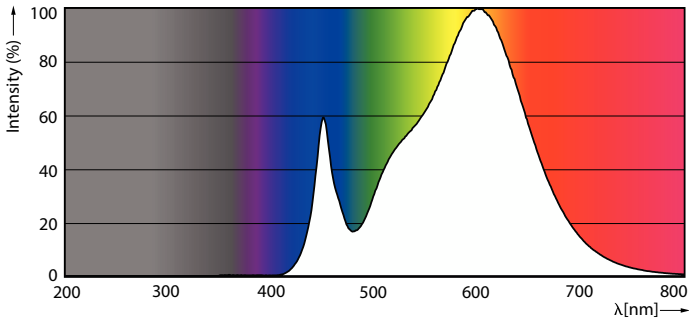
CorePro LED PLL

Photometric data



General uniform lighting - CorePro LED PLL HF/Mains 8W 830 4P

Light Distribution Diagram - CorePro LED PLL HF/Mains 8W 830 4P

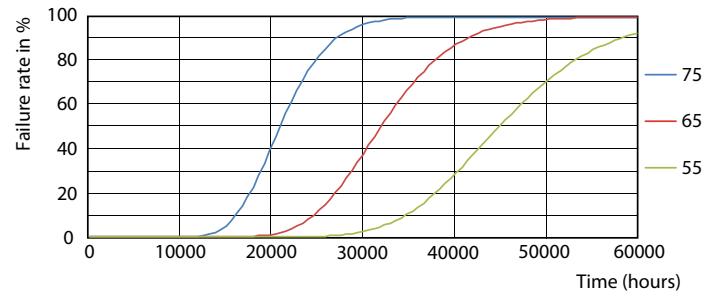


Spectral Power Distribution Colour - CorePro LED PLL HF/Mains 8W 830 4P

Lifetime



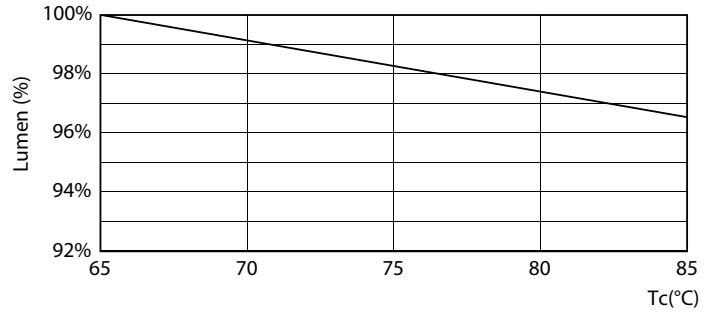
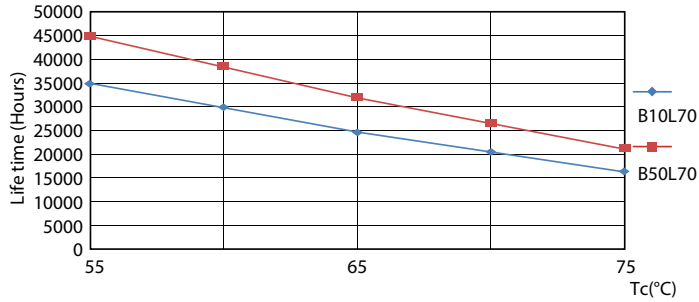
Life Expectancy Diagram



FailureRate

CorePro LED PLL

Lifetime



LifetimeVsTc

Lumen Maintenance Diagram - CorePro LED PLL HF/Mains 8W 830 4P



Lumen Maintenance Diagram - CorePro LED PLL HF/Mains 8W 830 4P

