



# MASTER LED tube EM/Mains T8 with Recycled Plastic



## MAS LEDtube 1200mm HO 11.3W 865 T8 EELB

MASTER, LEDtube, T8, EM/Mains, 1200 mm, 11.3 W, 36W TL-D, 6500 K, 2100 lm, CRI 80, 75000 h

MASTER, LEDtube, T8, EM/Mains, 1200 mm, 11.3 W, LED alternative to 36W TL-D, 6500 K, 2100 lm, CRI 80, 75000 h, 185 lm/W, EEL B, G13 Rotatable end-cap, Plastic, 40 %, 1200 mm, RG0, SDCM 6, PF 0.9, IP20, SVM 0.1, PstLM 0.1

### Product data

General Information		Operating and Electrical	
Cap base	G13 Rotatable end-cap	Colour consistency	<6
Nominal lifetime	75,000 h	Colour rendering index (CRI)	80
Switching Cycle	200,000	LLMF at end of nominal lifetime (nom.)	70 %
Lighting Technology	LEDtube	Photobiological safety according to EN 62471	RG0
Flux measurement reference	Sphere	Input frequency	50 to 60 Hz
Warranty period	5 years	Power Consumption	11.3 W
Light Technical		Lamp current (max.)	58 mA
Colour Code	865 [CCT of 6500K]	Lamp current (min.)	48 mA
Beam angle (nom.)	160 degree(s)	Starting time (nom.)	0.5 s
Luminous Flux	2,100 lm	Warm-up time to 60% light	0.5 s
Colour designation	Cool Daylight	Power Factor (Fraction)	0.9
Correlated Colour Temperature (Nom)	6500 K	Voltage (nom.)	220-240 V
Luminous efficacy (rated) (nom.)	185 lm/W	LED alternative to fluorescent lamp power	36W TL-D

# MASTER LED tube EM/Mains T8 with Recycled Plastic

Inrush current at mains	7.4
Max. lamp no. on MCB B type 10A – Mains	100
Max. lamp no. on MCB B type 10A – EM ballast without Compensation Capacitor.	100
Max. lamp no. on MCB B type 10A – EM ballast with Compensation Capacitor.	15
Max. lamp no. on MCB B type 16A – Mains	160
Max. lamp no. on MCB B type 16A – EM ballast without Compensation Capacitor.	160
Max. lamp no. on MCB B type 16A – EM ballast with Compensation Capacitor.	25
Ballast Compatibility	EM/Mains

## Temperature

T-Case maximum (nom.)	50 °C
-----------------------	-------

## Controls and Dimming

Dimmable	No
----------	----

## Mechanical and Housing

Lamp Finish	Frosted
Bulb material	Plastic
Product length	1,200 mm
Bulb shape	T8
Net Weight (Piece)	0.220 kg

## Approval and Application

Energy Efficiency Class	B
Energy-saving product	Yes
Approval marks	RoHS compliance CE marking KEMA Keur certificate ENEC certificate

Energy consumption kWh/1,000 hours	12 kWh
EPREL Registration Number	2571903
CE mark	Yes
EU RoHS compliant	Yes
LED innovations	UltraEfficient
Flickering value (PstLM)	0.1
Stroboscopic effect	0.1
Ambient temperature range	-20 to +45 °C
Post-consumer recycled plastic material ratio	40 %

## Application Conditions

Wireless Technology	Not applicable
---------------------	----------------

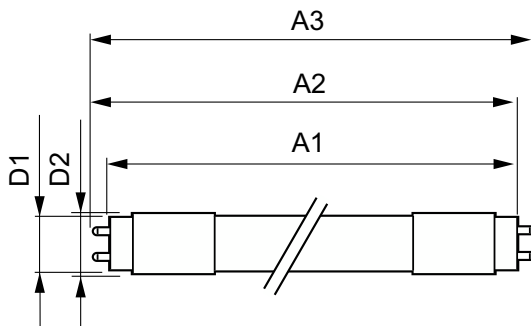
## Sustainability Data

Sustainability rating	Signify Circle
Product non-virgin material ratio	26.8 %

## Product Data

Order product name	MAS LEDtube 1200mm HO 11.3W 865 T8 EELB
Full product name	MAS LEDtube 1200mm HO 11.3W 865 T8 EELB
Full EOC	872016938809300
Order code	929004242602
Material no. (12 NC)	929004242602
Numerator – quantity per pack	1
EAN/UPC – Product/Case	8720169388093
Numerator – packs per outer box	10
EAN/UPC – Case	8720169388109

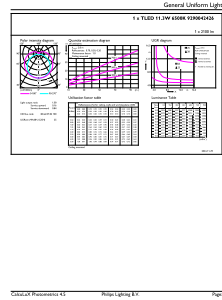
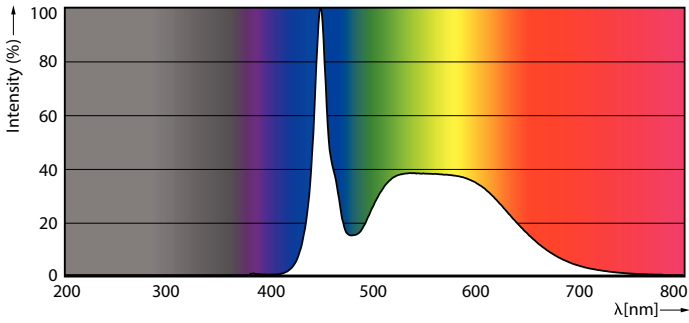
## Dimensional drawing



Product	D1	D2	A1	A2	A3
MAS LEDtube 1200mm HO 11.3W 865 T8 EELB	25.8 mm	28 mm	1,198.2 mm	1,205.3 mm	1,212.4 mm

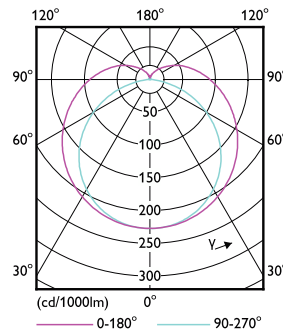
# MASTER LED tube EM/Mains T8 with Recycled Plastic

## Photometric data



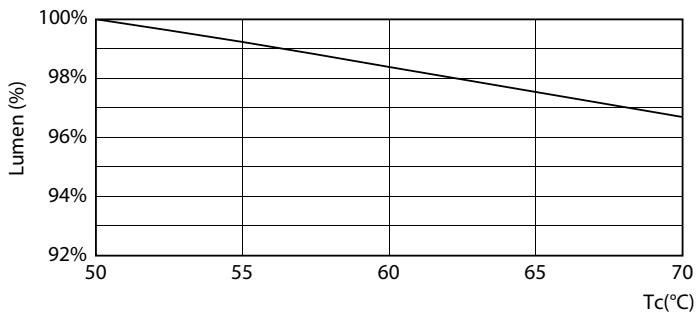
Spectral Power Distribution Colour - MAS LEDtube 1200mm HO 11.3W 865 T8 EELB

General uniform lighting - MAS LEDtube 1200mm HO 11.3W 865 T8 EELB



Light Distribution Diagram - MAS LEDtube 1200mm HO 11.3W 865 T8 EELB

## Lifetime



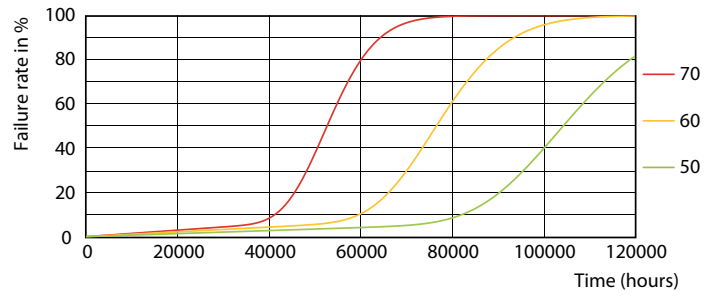
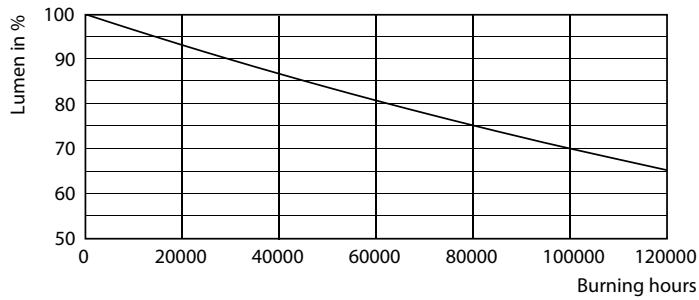
Lumen Maintenance Diagram - MAS LEDtube 1200mm HO 11.3W 865 T8 EELB



Life Expectancy Diagram

# MASTER LED tube EM/Mains T8 with Recycled Plastic

## Lifetime



Lumen Maintenance Diagram - MAS LEDtube 1200mm HO 11.3W 865 T8  
EELB

Life Expectancy Diagram



Life Expectancy Diagram

