



MASTER LED tube EM/Mains T8 with Recycled Plastic



MAS LEDtube 1500mm UO 20W 840 T8 EELB

MASTER, LEDtube, T8, EM/Mains, 1500 mm, 20 W, 58W TL-D, 4000 K, 3700 lm, CRI 80, 75000 h

MASTER, LEDtube, T8, EM/Mains, 1500 mm, 20 W, LED alternative to 58W TL-D, 4000 K, 3700 lm, CRI 80, 75000 h, 185 lm/W, EEL B, G13 Rotatable end-cap, Plastic, 40 %, 1500 mm, RG0, SDCM 6, PF 0.9, IP20, SVM 0.1, PstLM 0.1

Product data

General Information		Operating and Electrical	
Cap base	G13 Rotatable end-cap	Colour consistency	<6
Nominal lifetime	75,000 h	Colour rendering index (CRI)	80
Switching Cycle	200,000	LLMF at end of nominal lifetime (nom.)	70 %
Lighting Technology	LEDtube	Photobiological safety according to EN 62471	RG0
Flux measurement reference	Sphere	Input frequency	50 to 60 Hz
Warranty period	5 years	Power Consumption	20 W
Light Technical		Lamp current (max.)	103 mA
Colour Code	840 [CCT of 4000K]	Lamp current (min.)	85 mA
Beam angle (nom.)	160 degree(s)	Starting time (nom.)	0.5 s
Luminous Flux	3,700 lm	Warm-up time to 60% light	0.5 s
Colour designation	Cool White (CW)	Power Factor (Fraction)	0.9
Correlated Colour Temperature (Nom)	4000 K	Voltage (nom.)	220-240 V
Luminous efficacy (rated) (nom.)	185 lm/W	LED alternative to fluorescent lamp power	58W TL-D

MASTER LED tube EM/Mains T8 with Recycled Plastic

Inrush current at mains	9
Max. lamp no. on MCB B type 10A – Mains	75
Max. lamp no. on MCB B type 10A – EM ballast without Compensation Capacitor.	75
Max. lamp no. on MCB B type 10A – EM ballast with Compensation Capacitor.	10
Max. lamp no. on MCB B type 16A – Mains	120
Max. lamp no. on MCB B type 16A – EM ballast without Compensation Capacitor.	120
Max. lamp no. on MCB B type 16A – EM ballast with Compensation Capacitor.	16
Ballast Compatibility	EM/Mains

Temperature

T-Case maximum (nom.)	50 °C
-----------------------	-------

Controls and Dimming

Dimmable	No
----------	----

Mechanical and Housing

Lamp Finish	Frosted
Bulb material	Plastic
Product length	1,500 mm
Bulb shape	T8
Net Weight (Piece)	0.265 kg

Approval and Application

Energy Efficiency Class	B
Energy-saving product	Yes
Approval marks	RoHS compliance CE marking KEMA Keur certificate ENEC certificate

Energy consumption kWh/1,000 hours	20 kWh
EPREL Registration Number	2571900
CE mark	Yes
EU RoHS compliant	Yes
LED innovations	UltraEfficient
Flickering value (PstLM)	0.1
Stroboscopic effect	0.1
Ambient temperature range	-20 to +45 °C
Post-consumer recycled plastic material ratio	40 %

Application Conditions

Wireless Technology	Not applicable
---------------------	----------------

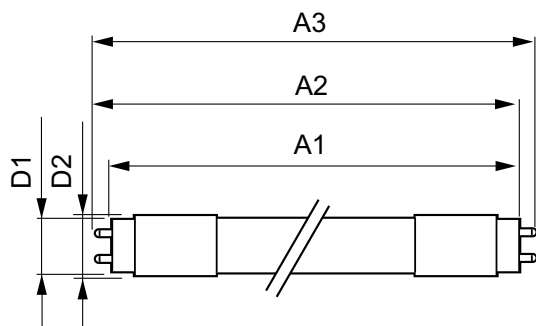
Sustainability Data

Sustainability rating	Signify Circle
Product non-virgin material ratio	25.8 %

Product Data

Order product name	MAS LEDtube 1500mm UO 20W 840 T8 EELB
Full product name	MAS LEDtube 1500mm UO 20W 840 T8 EELB
Full EOC	872016938801700
Order code	929004242202
Material no. (12 NC)	929004242202
Numerator – quantity per pack	1
EAN/UPC – Product/Case	8720169388017
Numerator – packs per outer box	10
EAN/UPC – Case	8720169388024

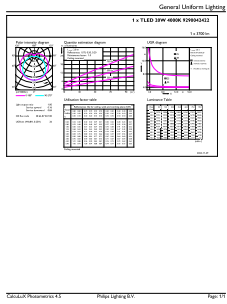
Dimensional drawing



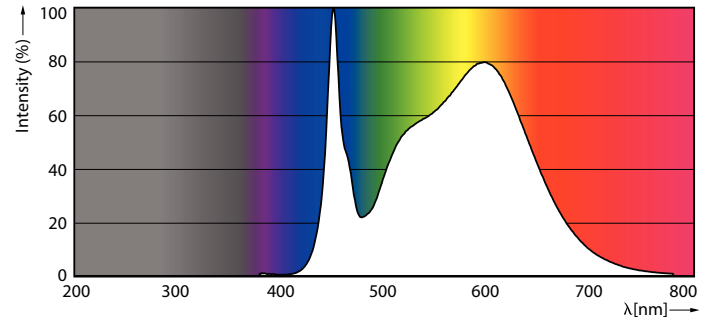
Product	D1	D2	A1	A2	A3
MAS LEDtube 1500mm UO 20W 840 T8 EELB	25.8 mm	28 mm	1,498.8 mm	1,505.9 mm	1,513 mm

MASTER LED tube EM/Mains T8 with Recycled Plastic

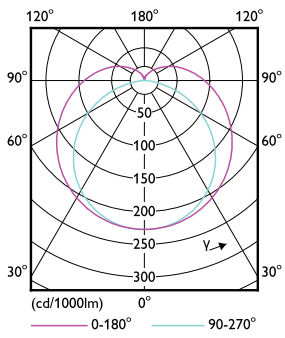
Photometric data



General uniform lighting - MAS LEDtube 1500mm UO 20W 840 T8 EELB

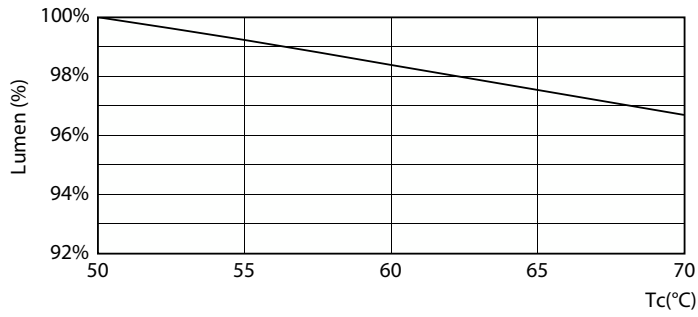


Spectral Power Distribution Colour - MAS LEDtube 1500mm UO 20W 840 T8 EELB

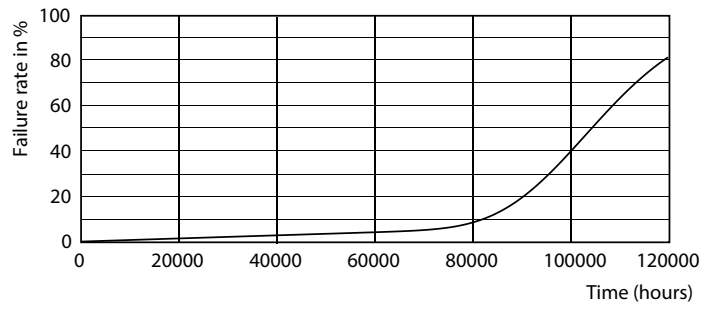


Light Distribution Diagram - MAS LEDtube 1500mm UO 20W 840 T8 EELB

Lifetime



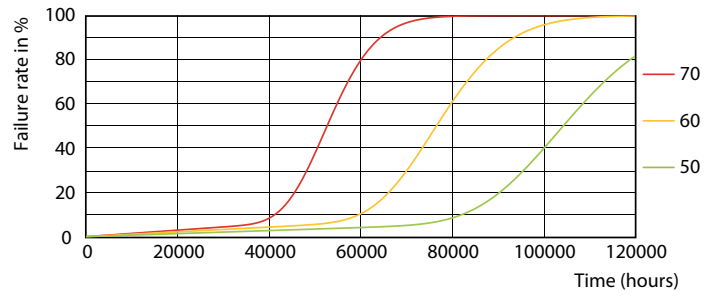
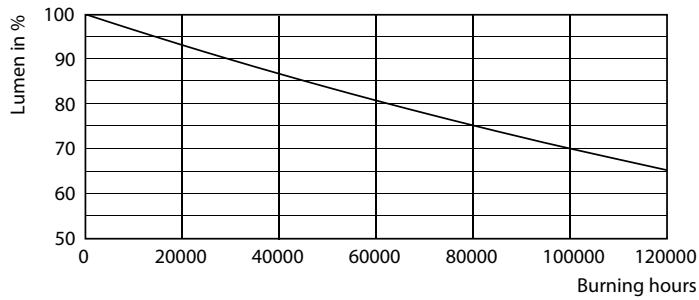
Lumen Maintenance Diagram - MAS LEDtube 1500mm UO 20W 840 T8 EELB



Life Expectancy Diagram

MASTER LED tube EM/Mains T8 with Recycled Plastic

Lifetime



Lumen Maintenance Diagram - MAS LEDtube 1500mm UO 20W 840 T8
EELB

Life Expectancy Diagram



Life Expectancy Diagram

