



MASTER LED tube EM/Mains T8 with Recycled Plastic

MAS LEDtube 1200mm UO 13.5W 840 T8 ID

MASTER, LEDtube, T8, EM/Mains, Single-ended, 1200 mm, 220-240 V, 13.5 W, 36W TL-D, 4000 K, 2500 lm, CRI 80, 75000 hour(s)

MASTER, LEDtube, T8, EM/Mains, Single-ended, 1200 mm, 220-240 V, 13.5 W, LED alternative to 36W TL-D, 4000 K, 2500 lm, CRI 80, 75000 hour(s), 185 lm/W, G13 Rotatable end-cap, Beam angle 160 degree(s), Plastic, 0 %, 1200 mm, RGO, SDCM 6, PF 0.9, IP20

Product data

General Information	
Cap-Base	G13 Rotatable end-cap
Nominal lifetime	75,000 hour(s)
Switching Cycle	200,000
Lighting Technology	LEDtube

Light Technical	
Color Code	840 [CCT of 4000K]
Beam Angle (Nom)	160 degree(s)
Luminous Flux	2,500 lm
Color Designation	Cool White (CW)
Correlated Color Temperature (Nom)	4000 K
Luminous Efficacy (rated) (Nom)	185 lm/W

Color Consistency	<6
Color rendering index (CRI)	80
LLMF At End Of Nominal Lifetime (Nom)	70 %
Photobiological safety according to EN 62471	RGO

Operating and Electrical	
Input Frequency	50 to 60 Hz
Power Consumption	13.5 W
Lamp Current (Max)	69 mA
Lamp Current (Min)	56 mA
Wattage Equivalent	36 W
Starting Time (Nom)	0.5 s
Warm-up time to 60% light	0.5 s

MASTER LED tube EM/Mains T8 with Recycled Plastic

Power Factor (Fraction)	0.9
Voltage (Nom)	220-240 V
LED alternative to fluorescent lamp power	36W TL-D
Ballast Compatibility	EM/Mains

Temperature

T-Case Maximum (Nom)	50 °C
----------------------	-------

Controls and Dimming

Dimmable	No
----------	----

Mechanical and Housing

Bulb Finish	Frosted
Bulb Material	Plastic
Product Length	1,200 mm
Bulb Shape	T8
Net Weight (Piece)	0.220 kg

Approval and Application

Energy Saving Product	Yes
Approval Marks	RoHS compliance CE marking KEMA Keur certificate ENEC certificate
Energy Consumption kWh/1000 h	14 kWh
CE mark	Yes
EU RoHS compliant	Yes

LED Innovations	UltraEfficient
Ambient temperature range	-20 to +45 °C
Post-consumer recycled plastic material ratio	0 %

Application Conditions

Wireless Technology	Not applicable
---------------------	----------------

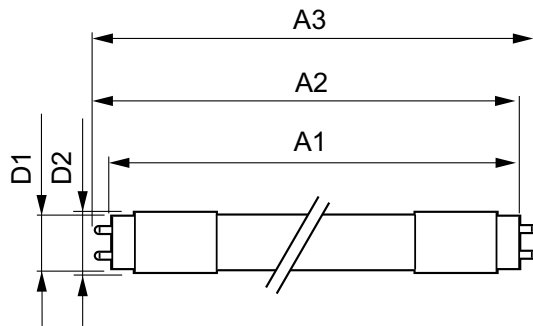
Sustainability Data

Product non-virgin material ratio	0 %
-----------------------------------	-----

Product Data

Order product name	MAS LEDtube 1200mm UO 13.5W 840 T8 ID
Full product name	MAS LEDtube 1200mm UO 13.5W 840 T8 ID
Full product code	872110303789300
Order code	929004241917
Material Nr. (12NC)	929004241917
Numerator - Quantity Per Pack	1
EAN/UPC - Product/Case	8721103037893
Numerator - Packs per outer box	10
EAN/UPC - Case	8721103037909

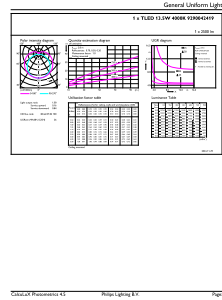
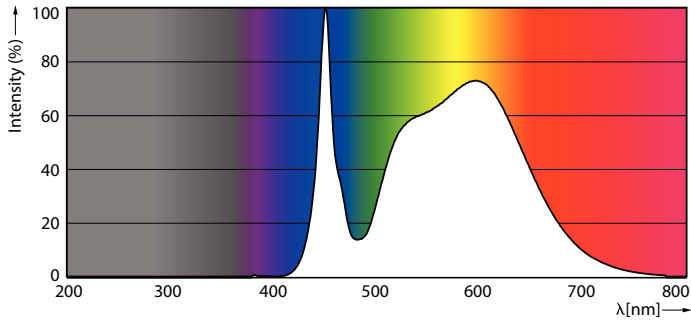
Dimensional drawing



Product	D1	D2	A1	A2	A3
MAS LEDtube 1200mm UO 13.5W 840 T8 ID	25.8 mm	28 mm	1,198.2 mm	1,205.3 mm	1,212.4 mm

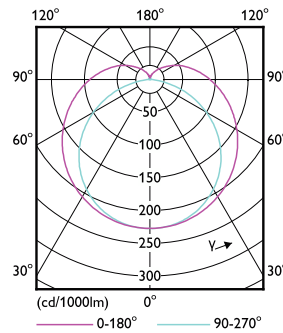
MASTER LED tube EM/Mains T8 with Recycled Plastic

Photometric data



Spectral Power Distribution Colour - MAS LEDtube 1200mm UO 13.5W 840 T8 ID

General uniform lighting - MAS LEDtube 1200mm UO 13.5W 840 T8 ID



Light Distribution Diagram - MAS LEDtube 1200mm UO 13.5W 840 T8 ID

Lifetime



Lumen Maintenance Diagram - MAS LEDtube 1200mm UO 13.5W 840 T8 ID



Life Expectancy Diagram

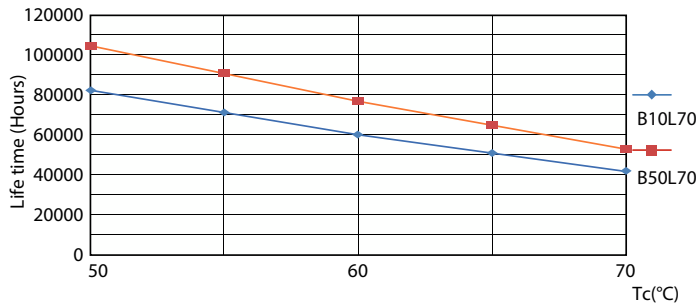
MASTER LED tube EM/Mains T8 with Recycled Plastic

Lifetime



Lumen Maintenance Diagram - MAS LEDtube 1200mm UO 13.5W 840 T8 ID

Life Expectancy Diagram



Life Expectancy Diagram

