



# MainsFit (UL Type-B) T5

9T5HE/COR/22-5CCT/MF12/G 25/1

CorePro, LEDtube, T5, 600 mm, 9 W, 3000 K, 3500 K, 4000 K, 5000 K, 6500 K, 1200 lm, 50000 hour(s)

The MainsFit (UL Type-B) lamps are designed to be the perfect retrofit solution to move from traditional fluorescent lamps to energy saving LEDs. This ballast bypass lamp has everything needed built into the lamp with proven energy savings, long life, surge suppression and industry leading safety features. All lamps in the MainsFit family are double-ended to help simplify the installation. In addition, all lamps meet the Philips standards for light quality so that end users will be in a comfortable environment regardless of the MainsFit lamp type.

## Product data

General Information	
Cap-Base	G5
Nominal lifetime	50,000 hour(s)
Switching Cycle	200,000
Lighting Technology	LEDtube

Light Technical	
Color Code	3000K/3500K/4000K/5000K/6500K
Beam Angle (Nom)	160 degree(s)
Luminous Flux	1,200 lm
Color Designation	3000K/3500K/4000K/5000K/6500K
Correlated Color Temperature (Nom)	3000 3500 4000 5000 6500 K
Luminous Efficacy (rated) (Nom)	133 lm/W
Color Consistency	<6

Color rendering index (CRI)	80
LLMF At End Of Nominal Lifetime (Nom)	70 %
Photobiological safety according to EN 62471	RGO

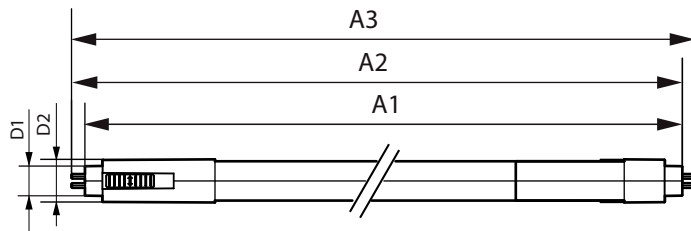
Operating and Electrical	
Input Frequency	50 to 60 Hz
Power Consumption	9 W
Lamp Current (Nom)	80 mA
Wattage Equivalent	14 W
Starting Time (Nom)	0.5 s
Warm-up time to 60% light	0.5 s
Power Factor (Fraction)	0.9
Voltage (Nom)	120-277 V

# MainsFit (UL Type-B) T5

UL Type	UL Type B
<b>Temperature</b>	
T-Case Maximum (Nom)	70 °C
<b>Controls and Dimming</b>	
Dimmable	No
<b>Mechanical and Housing</b>	
Bulb Finish	Frosted
Bulb Material	Glass
Product Length	600 mm
Bulb Shape	T5
Net Weight (Piece)	0.090 kg
<b>Approval and Application</b>	
Energy Saving Product	Yes
Approval Marks	RoHS compliance UL certificate KEMA Keur certificate

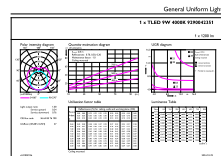
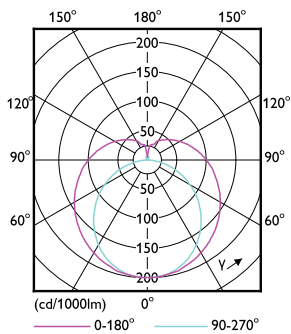
EU RoHS compliant	Yes
Ambient temperature range	-20 to +45 °C
<b>Application Conditions</b>	
can it be used in closed luminaires	Yes
<b>Product Data</b>	
Order product name	9T5HE/COR/22-5CCT/MF12/G 25/1
Full product name	9T5HE/COR/22-5CCT/MF12/G 25/1
Order code	929004235104
Material Nr. (12NC)	929004235104
Numerator - Quantity Per Pack	1
EAN/UPC - Product/Case	046677592776
Numerator - Packs per outer box	25
EAN/UPC - Case	50046677592771

## Dimensional drawing



Product	D1	D2	A1	A2	A3
9T5HE/COR/22-5CCT/MF12/G 25/1	15.7 mm	23 mm	547.8 mm	554.9 mm	563.2 mm

## Photometric data

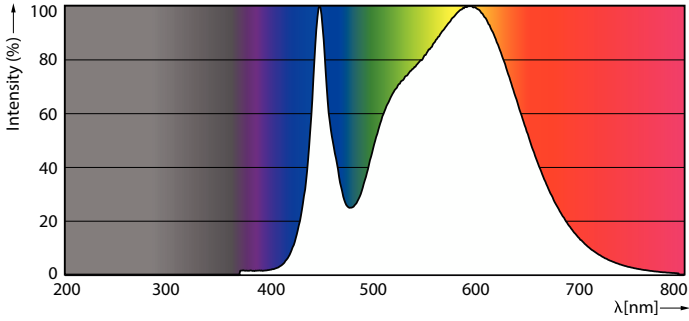


Light Distribution Diagram - 9T5HE/COR/22-5CCT/MF12/G 25/1

General uniform lighting - 9T5HE/COR/22-5CCT/MF12/G 25/1

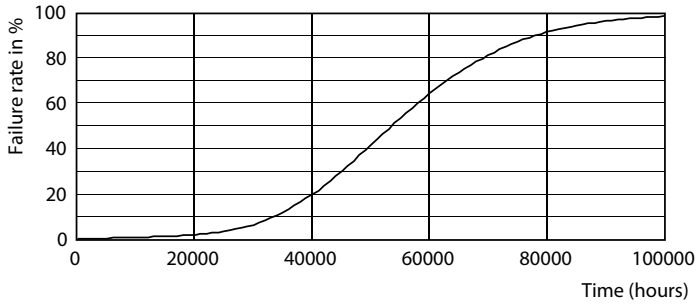
# MainsFit (UL Type-B) T5

## Photometric data

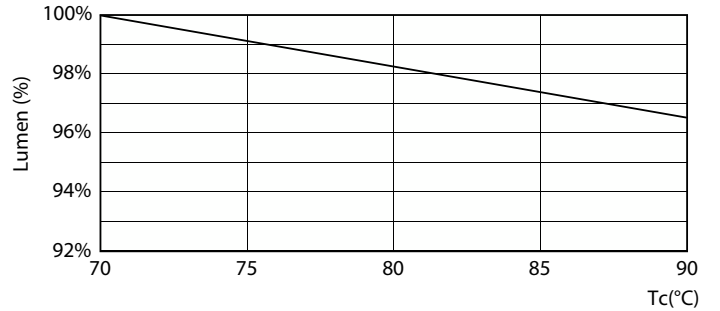


Spectral Power Distribution Colour - 9T5HE/COR/22-5CCT/MF12/G 25/1

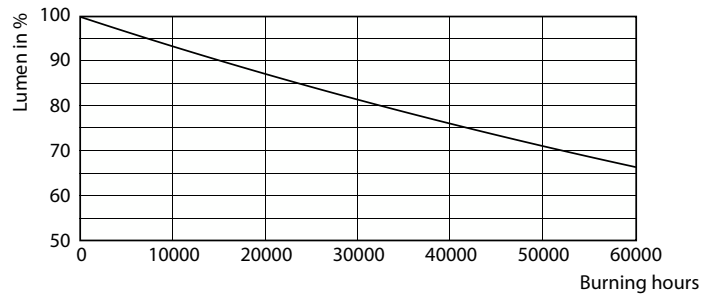
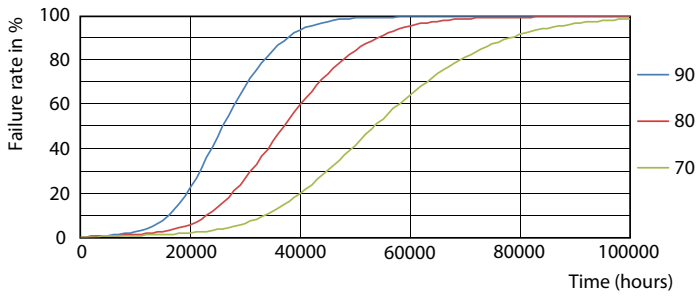
## Lifetime



Life Expectancy Diagram



Lumen Maintenance Diagram - 9T5HE/COR/22-5CCT/MF12/G 25/1

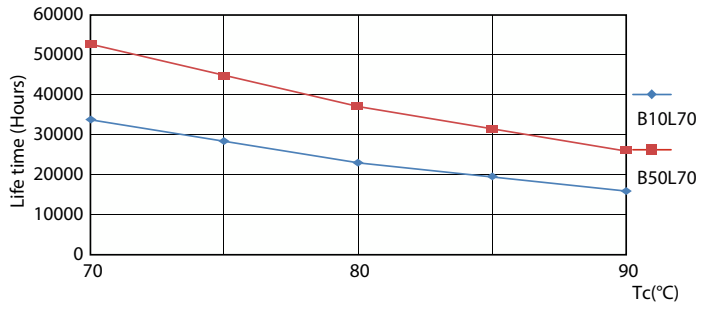


LEDtube 50K 7090 FailureRate-LED

Lumen Maintenance Diagram - 9T5HE/COR/22-5CCT/MF12/G 25/1

## MainsFit (UL Type-B) T5

### Lifetime



LifetimeVsTc

