



MainsFit (UL Type-B) T5

4.5T5HE/COR/12-5CCT/MF5/G 25/1

CorePro, LEDtube, T5, 300 mm, 4.5 W, 3000 K, 3500 K, 4000 K, 5000 K, 6500 K, 500 lm, 50000 hour(s)

The MainsFit (UL Type-B) lamps are designed to be the perfect retrofit solution to move from traditional fluorescent lamps to energy saving LEDs. This ballast bypass lamp has everything needed built into the lamp with proven energy savings, long life, surge suppression and industry leading safety features. All lamps in the MainsFit family are double-ended to help simplify the installation. In addition, all lamps meet the Philips standards for light quality so that end users will be in a comfortable environment regardless of the MainsFit lamp type.

Product data

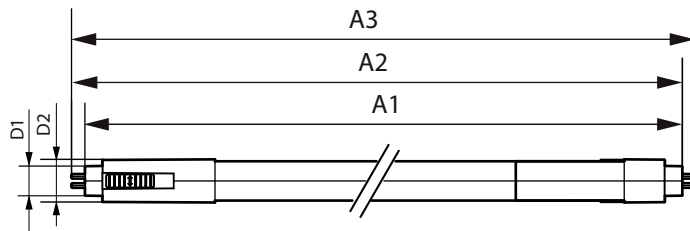
General Information		Color rendering index (CRI)	
Cap-Base	G5		80
Nominal lifetime	50,000 hour(s)	LLMF At End Of Nominal Lifetime (Nom)	70 %
Switching Cycle	200,000	Photobiological safety according to EN 62471 RGO	
Lighting Technology	LEDtube	Operating and Electrical	
Light Technical		Input Frequency	50 to 60 Hz
Color Code	3000K/3500K/4000K/5000K/6500K	Power Consumption	4.5 W
Beam Angle (Nom)	160 degree(s)	Lamp Current (Nom)	44 mA
Luminous Flux	500 lm	Wattage Equivalent	8 W
Color Designation	3000K/3500K/4000K/5000K/6500K	Starting Time (Nom)	0.5 s
Correlated Color Temperature (Nom)	3000 3500 4000 5000 6500 K	Warm-up time to 60% light	0.5 s
Luminous Efficacy (rated) (Nom)	111 lm/W	Power Factor (Fraction)	0.5
Color Consistency	<6	Voltage (Nom)	120-277 V

MainsFit (UL Type-B) T5

UL Type	UL Type B
Temperature	
T-Case Maximum (Nom)	65 °C
Controls and Dimming	
Dimmable	No
Mechanical and Housing	
Bulb Finish	Frosted
Bulb Material	Glass
Product Length	300 mm
Bulb Shape	T5
Net Weight (Piece)	0.060 kg
Approval and Application	
Energy Saving Product	Yes
Approval Marks	RoHS compliance UL certificate KEMA Keur certificate

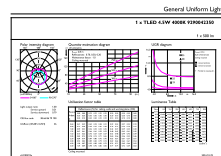
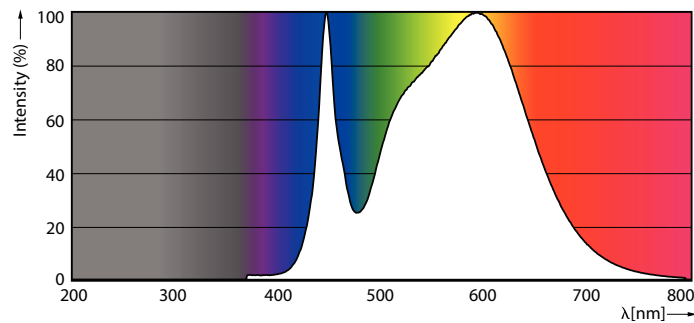
EU RoHS compliant	Yes
Ambient temperature range	-20 to +45 °C
Application Conditions	
can it be used in closed luminaires	Yes
Wireless Technology	Not applicable
Product Data	
Order product name	4.5T5HE/COR/12-5CCT/MF5/G 25/1
Full product name	4.5T5HE/COR/12-5CCT/MF5/G 25/1
Order code	929004235004
Material Nr. (12NC)	929004235004
Numerator - Quantity Per Pack	1
EAN/UPC - Product/Case	046677592769
Numerator - Packs per outer box	25
EAN/UPC - Case	50046677592764

Dimensional drawing



Product	D1	D2	A1	A2	A3
4.5T5HE/COR/12-5CCT/MF5/G 25/1	15.7 mm	23 mm	287.1 mm	294.2 mm	302.5 mm

Photometric data

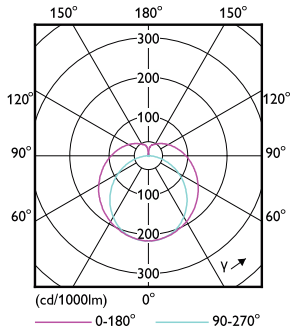


Spectral Power Distribution Colour - 4.5T5HE/COR/12-5CCT/MF5/G 25/1

General uniform lighting - 4.5T5HE/COR/12-5CCT/MF5/G 25/1

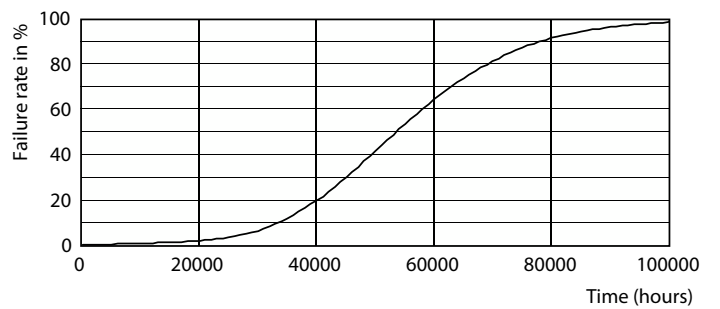
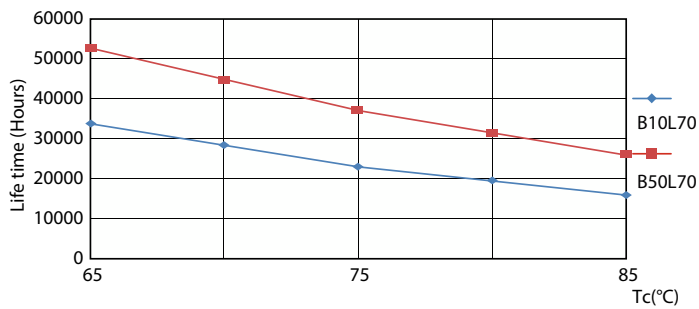
MainsFit (UL Type-B) T5

Photometric data



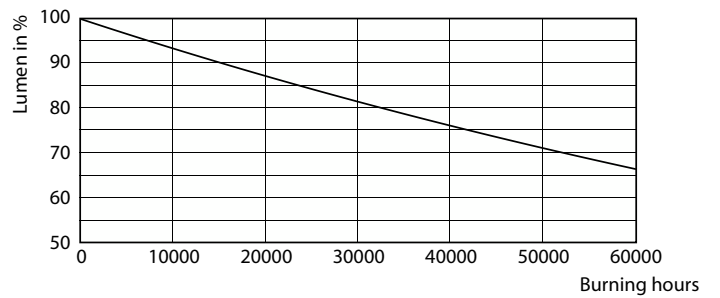
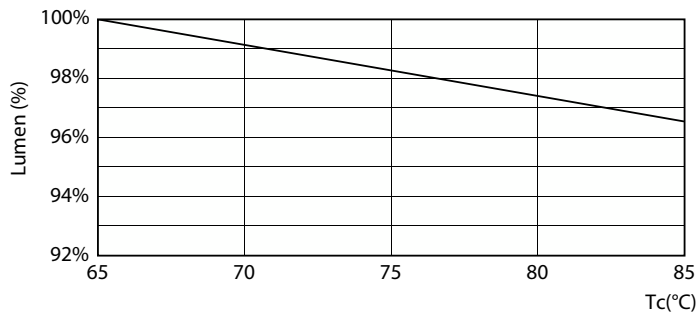
Light Distribution Diagram - 4.5T5HE/COR/12-5CCT/MF5/G 25/1

Lifetime



LifetimeVsTc

Life Expectancy Diagram

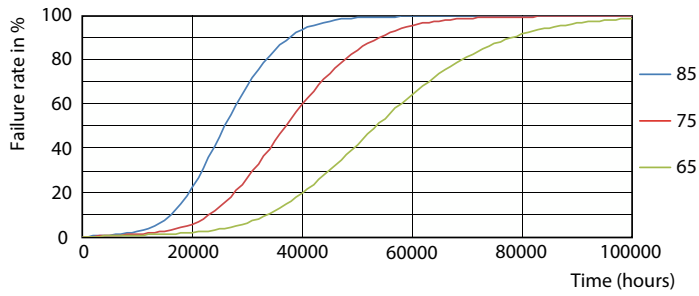


Lumen Maintenance Diagram - 4.5T5HE/COR/12-5CCT/MF5/G 25/1

Lumen Maintenance Diagram - 4.5T5HE/COR/12-5CCT/MF5/G 25/1

MainsFit (UL Type-B) T5

Lifetime



FailureRate

