



# CorePro LED PLC 2P

## LED PLC 8.9W 865 2P G24d-3

LED, PL-C, EM/Mains, 148 mm, 220-240 V, 8.9 W, 26W PL-C, 6500 K, 1100 lm, 30000 jam

LED, PL-C, EM/Mains, 148 mm, 220-240 V, 8.9 W, LED alternative to 26W PL-C, 6500 K, 1100 lm, 30000 jam, 123 lm/W, G24D-3 Rotatable end-cap, Plastik, RG1

### Product data

Informasi Umum	
Tutup-Dasar	G24D-3 Rotatable end-cap
Nominal masa pakai	30.000 jam
Siklus Sakelar	50.000
Teknologi Pencahayaan	LED
Teknis Lampu	
Kode Warna	865 [CCT of 6500K]
Sudut Cahaya (Nom)	120 °
Flux Cahaya	1.100 lm
Penandaan Warna	Cool Daylight
Suhu Warna Terkorelasi (Nom)	6500 K
Daya Penerangan (terukur) (Nom)	123 lm/W
Konsistensi Warna	<6
Indeks renderasi warna (CRI)	82
LLMF di Akhir Masa Pakai Nominal (Nom)	70 %
Keamanan fotobiologis menurut EN 62471	RG1
Pengoperasian dan Kelistrikan	
Frekuensi Input	50 hingga 60 Hz
Konsumsi Daya	8.9 W

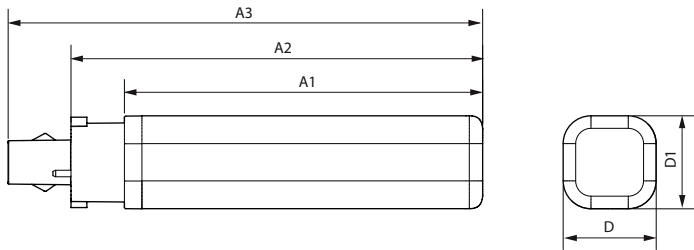
Arus Lampu (Nom)	52 mA
Watt yang Setara	26 W
Waktu Mulai (Nom)	0,5 s
Waktu pemanasan hingga 60% cahaya	0.5 s
Faktor Daya (Fraksi)	0.9
Tegangan (Nom)	220-240 V
Alternatif LED untuk daya lampu fluoresen	26W PL-C
Kompatibilitas Pemberat	EM/Mains
Suhu	
T-Case Maksimum (Nom)	75 °C
Kontrol dan Peredupan	
Dapat diredupkan	Tidak
Mekanis dan Housing	
Lapisan bohlam	Suram
Material Bohlam	Plastik
Panjang Produk	148 mm
Bentuk Bohlam	PL-C

# CorePro LED PLC 2P

Berat Bersih (Bagian)	0,090 kg
<b>Penyetujuan dan Aplikasi</b>	
Produk Hemat energi	Ya
Tanda Persetujuan	Sesuai RoHS Penandaan CE Sertifikat KEMA Keur
Tanda CE	Ya
Sesuai EU RoHS	Ya
Kisaran suhu ambien	-20 hingga +35 °C
<b>Kondisi Aplikasi</b>	
Teknologi Nirkabel	Tidak berlaku

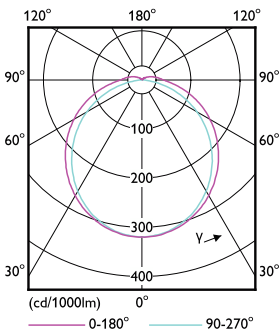
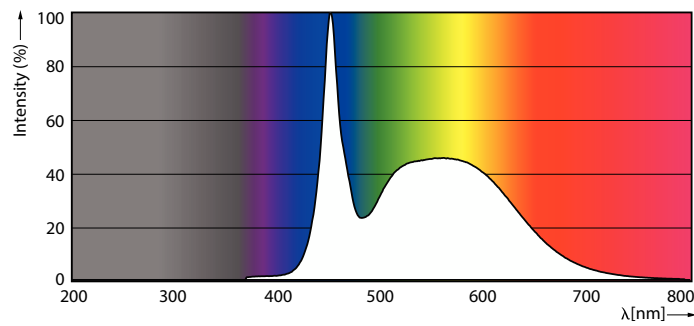
<b>Data Produk</b>	
Nama produk pesanan	LED PLC 8.9W 865 2P G24d-3
Nama lengkap produk	LED PLC 8.9W 865 2P G24d-3
Kode produk lengkap	872016932591300
Kode urutan	929003820308
No. Material (12NC)	929003820308
Numerator - Jumlah Per Pak	1
EAN/UPC - Produk/Kantung	8720169325913
Numerator - Pak per kotak bagian luar	10
EAN/UPC - Kantung	8720169325920

## Dimensional drawing



Product	D1	D2	A1	A2	A3
LED PLC 8.9W 865 2P G24d-3	34 mm	34 mm	129 mm	148 mm	171 mm

## Photometric data

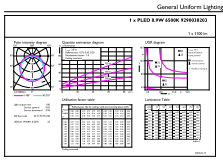


Spectral Power Distribution Colour - LED PLC 8.9W 865 2P G24d-3

Light Distribution Diagram - LED PLC 8.9W 865 2P G24d-3

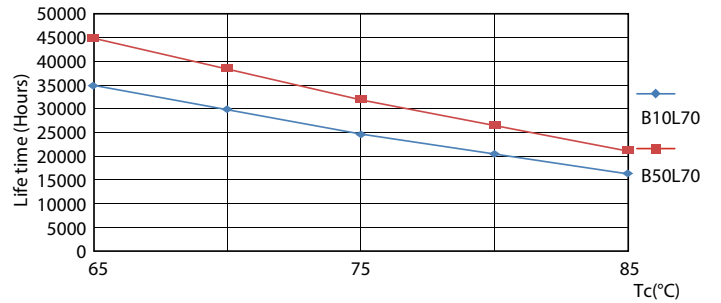
# CorePro LED PLC 2P

## Photometric data

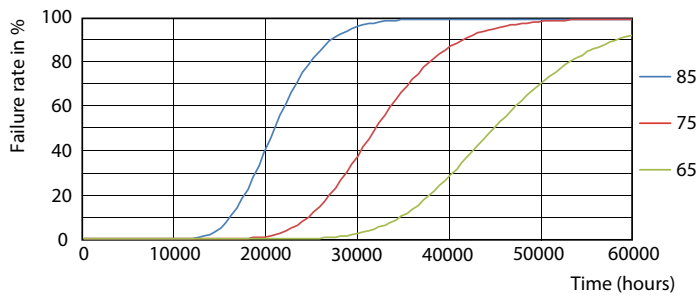


General uniform lighting - LED PLC 8.9W 865 2P G24d-3

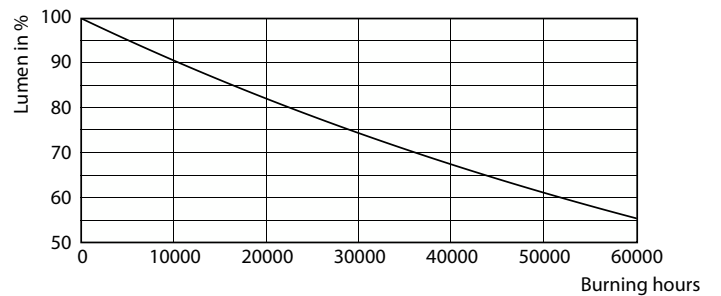
## Lifetime



Life Expectancy Diagram



LifetimeVsTc

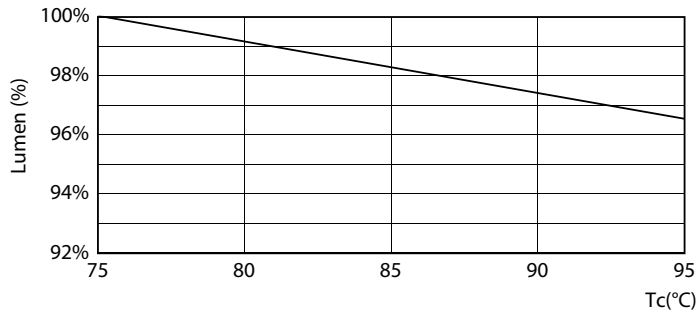


FailureRate

Lumen Maintenance Diagram - LED PLC 8.9W 865 2P G24d-3

# CorePro LED PLC 2P

## Lifetime



Lumen Maintenance Diagram - LED PLC 8.9W 865 2P G24d-3

