



MASTER LEDtube T8

MAS LEDtube STD 1200mm 10W865 T8

MASTER, LEDtube, T8, EM/Mains, Single-end, 1200 mm, 220-240 V, 10 W, 36W TL-D, 6500 K, 1600 lm, 60000 hour(s)

The Philips MASTER LEDtube integrates a LED light source into a traditional fluorescent form factor. Its unique design creates a perfectly uniform visual appearance, which cannot be distinguished from traditional fluorescent. These T8 LED tubes are the right choice for absolute performance and are designed to stand up to everyday conditions. Unparalleled savings thanks to low energy consumption and an exceptionally long lifetime ensure this tube masters every demanding application.

Warnings and Safety

- NOTE: The overall energy efficiency and light distribution of any installation that uses these lamps will be determined by the design of the installation.

Product data

General Information		Operating and Electrical	
Cap-Base	G13	Luminous Efficacy (rated) (Nom)	160 lm/W
Nominal lifetime	60,000 hour(s)	Color Consistency	<6
Switching Cycle	200,000	Color rendering index (CRI)	80
Lighting Technology	LEDtube	LLMF At End Of Nominal Lifetime (Nom)	70 %
		Photobiological safety according to EN 62471	RG0
Light Technical		Operating and Electrical	
Color Code	865 [CCT of 6500K]	Input Frequency	50 to 60 Hz
Beam Angle (Nom)	190 degree(s)	Power Consumption	10 W
Luminous Flux	1,600 lm	Lamp Current (Max)	50 mA
Color Designation	Cool Daylight	Lamp Current (Min)	47 mA
Correlated Color Temperature (Nom)	6500 K	Wattage Equivalent	36 W

MASTER LEDtube T8

Starting Time (Nom)	0.5 s
Warm-up time to 60% light	0.5 s
Power Factor (Fraction)	0.9
Voltage (Nom)	220-240 V
LED alternative to fluorescent lamp power	36W TL-D
Ballast Compatibility	EM/Mains

Temperature

T-Case Maximum (Nom)	50 °C
----------------------	-------

Controls and Dimming

Dimmable	No
----------	----

Mechanical and Housing

Bulb Finish	Frosted
Bulb Material	Plastic
Product Length	1,200 mm
Bulb Shape	T8
Net Weight (Piece)	0.180 kg

Approval and Application

Energy Saving Product	Yes
-----------------------	-----

Approval Marks	RoHS compliance KEMA Keur certificate
EU RoHS compliant	Yes
Ambient temperature range	-20 to +45 °C

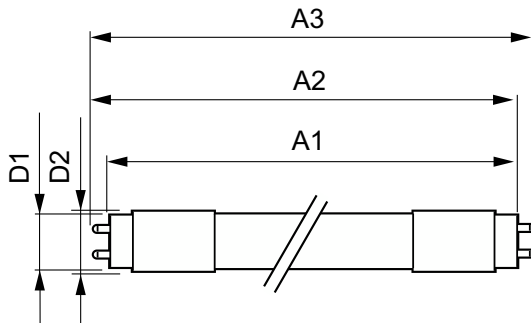
Application Conditions

Wireless Technology	Not applicable
---------------------	----------------

Product Data

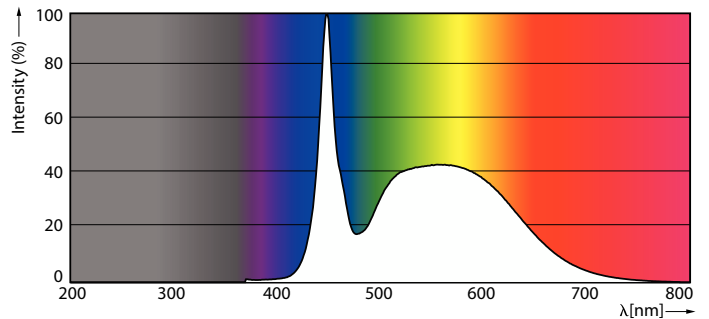
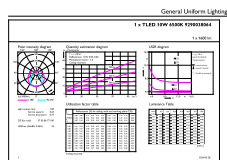
Order product name	MAS LEDtube STD 1200mm 10W865 T8
Full product name	MAS LEDtube STD 1200mm 10W865 T8
Full product code	872016931603400
Order code	929003806408
Material Nr. (12NC)	929003806408
Numerator - Quantity Per Pack	1
EAN/UPC - Product/Case	8720169316034
Numerator - Packs per outer box	20
EAN/UPC - Case	8720169316041

Dimensional drawing



Product	D1	D2	A1	A2	A3
MAS LEDtube STD 1200mm 10W865 T8	25.8 mm	28 mm	1,198.2 mm	1,205.3 mm	1,212.4 mm

Photometric data

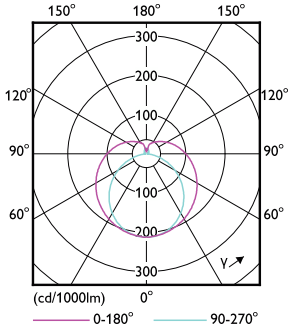


General uniform lighting - MAS LEDtube STD 1200mm 10W865 T8

Spectral Power Distribution Colour - MAS LEDtube STD 1200mm 10W865 T8

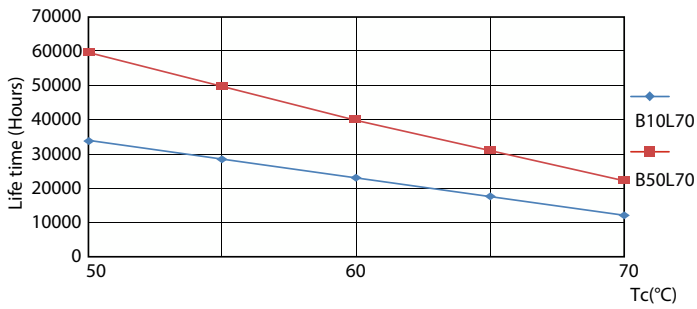
MASTER LEDtube T8

Photometric data

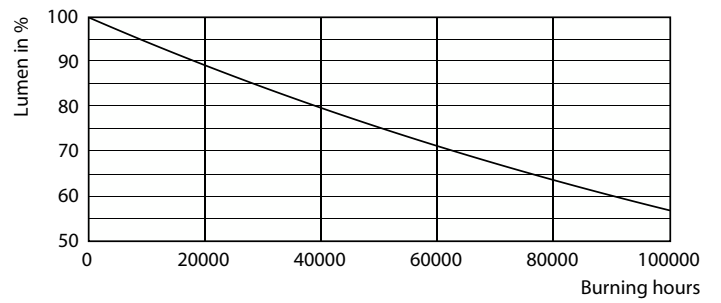


Light Distribution Diagram - MAS LEDtube STD 1200mm 10W865 T8

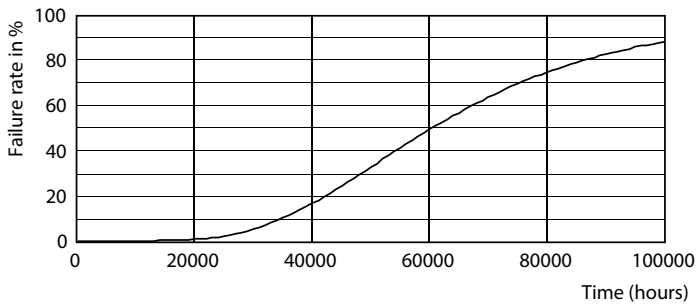
Lifetime



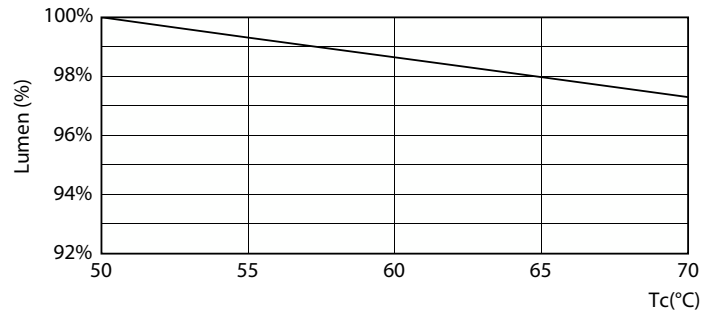
LEDtube 60K 5070 LifetimeVsTc-LED



Lumen Maintenance Diagram - MAS LEDtube STD 1200mm 10W865 T8



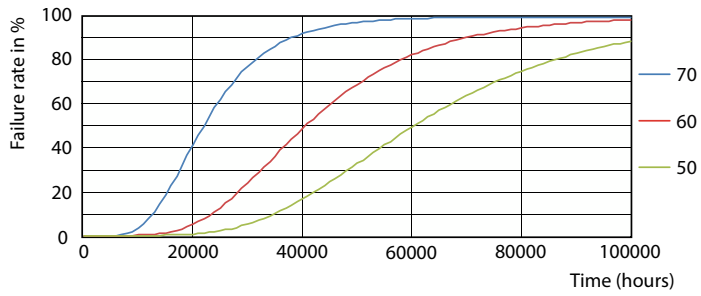
Life Expectancy Diagram



Lumen Maintenance Diagram - MAS LEDtube STD 1200mm 10W865 T8

MASTER LEDtube T8

Lifetime



LEDtube 60K 5070 FailureRate-LED

