



MASTER LEDtube T8

MASTER LEDtube 600mm HO 8W865 T8

MASTER, LEDtube, T8, EM/Mains, Single-end, 600 mm, 220-240 V, 8 W, 18W TL-D, 6500 K, 1200 lm, 60000 hour(s)

MASTER, LEDtube, T8, EM/Mains, Single-end, 600 mm, 220-240 V, 8 W, LED alternative to 18W TL-D, 6500 K, 1200 lm, 60000 hour(s), 150 lm/W, G13, Beam angle 190 degree(s), Plastic, RGO

Warnings and Safety

· NOTE: The overall energy efficiency and light distribution of any installation that uses these lamps will be determined by the design of the installation.

Product data

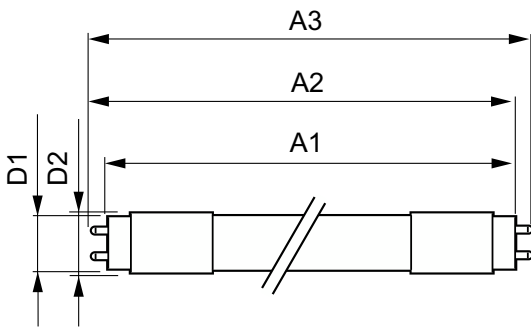
| General Information | | Photobiological safety according to EN 62471 RGO | |
|---------------------------------------|--------------------|--|-------------|
| Cap-Base | G13 | | |
| Nominal lifetime | 60,000 hour(s) | | |
| Switching Cycle | 200,000 | | |
| Lighting Technology | LEDtube | | |
| Light Technical | | Operating and Electrical | |
| Color Code | 865 [CCT of 6500K] | Input Frequency | 50 to 60 Hz |
| Beam Angle (Nom) | 190 degree(s) | Power Consumption | 8 W |
| Luminous Flux | 1,200 lm | Lamp Current (Max) | 40 mA |
| Color Designation | Cool Daylight | Lamp Current (Min) | 37 mA |
| Correlated Color Temperature (Nom) | 6500 K | Wattage Equivalent | 18 W |
| Luminous Efficacy (rated) (Nom) | 150 lm/W | Starting Time (Nom) | 0.5 s |
| Color Consistency | <6 | Warm-up time to 60% light | 0.5 s |
| Color rendering index (CRI) | 80 | Power Factor (Fraction) | 0.9 |
| LLMF At End Of Nominal Lifetime (Nom) | 70 % | Voltage (Nom) | 220-240 V |
| | | LED alternative to fluorescent lamp power | 18W TL-D |
| | | Ballast Compatibility | EM/Mains |

MASTER LEDtube T8

| Temperature | |
|--------------------------|---------------------------------------|
| T-Case Maximum (Nom) | 50 °C |
| Controls and Dimming | |
| Dimmable | No |
| Mechanical and Housing | |
| Bulb Finish | Frosted |
| Bulb Material | Plastic |
| Product Length | 600 mm |
| Bulb Shape | T8 |
| Net Weight (Piece) | 0.090 kg |
| Approval and Application | |
| Energy Saving Product | Yes |
| Approval Marks | RoHS compliance KEMA Keur certificate |
| EU RoHS compliant | Yes |

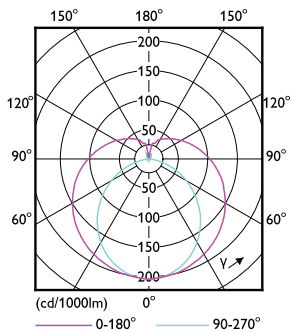
| Ambient temperature range | -20 to +45 °C |
|---------------------------------|----------------------------------|
| Application Conditions | |
| Wireless Technology | Not applicable |
| Product Data | |
| Order product name | MAS LEDtube 600mm HO 8W865 T8 |
| Full product name | MASTER LEDtube 600mm HO 8W865 T8 |
| Full product code | 872016931597600 |
| Order code | 31597600 |
| Material Nr. (12NC) | 929003805908 |
| Numerator - Quantity Per Pack | 1 |
| EAN/UPC - Product/Case | 8720169315976 |
| Numerator - Packs per outer box | 20 |
| EAN/UPC - Case | 8720169315983 |

Dimensional drawing

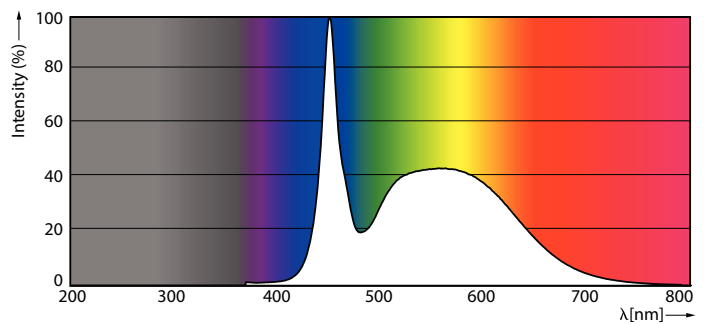


| Product | D1 | D2 | A1 | A2 | A3 |
|-------------------------------|---------|-------|----------|----------|--------|
| MAS LEDtube 600mm HO 8W865 T8 | 25.8 mm | 28 mm | 595.7 mm | 598.8 mm | 604 mm |

Photometric data



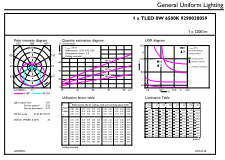
Light Distribution Diagram - MAS LEDtube 600mm HO 8W865 T8



Spectral Power Distribution Colour - MAS LEDtube 600mm HO 8W865 T8

MASTER LEDtube T8

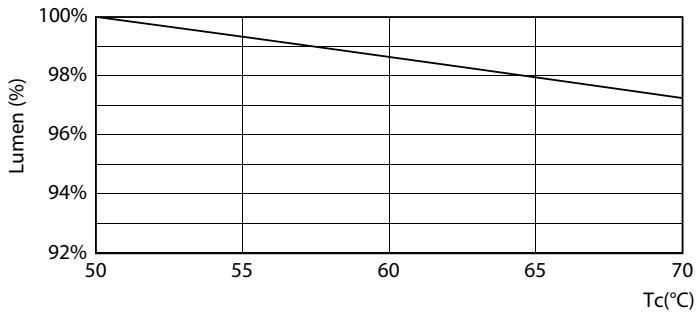
Photometric data



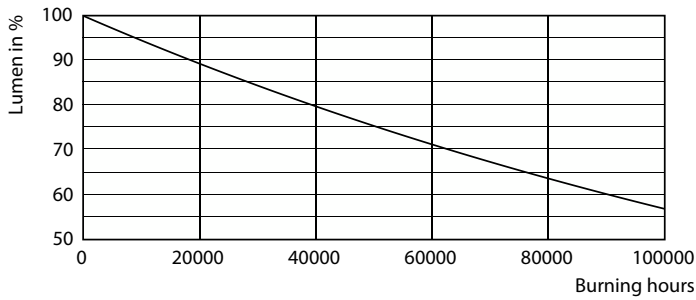
General Uniform Lighting - MAS LEDtube 600mm HO 8W865 T8

General uniform lighting - MAS LEDtube 600mm HO 8W865 T8

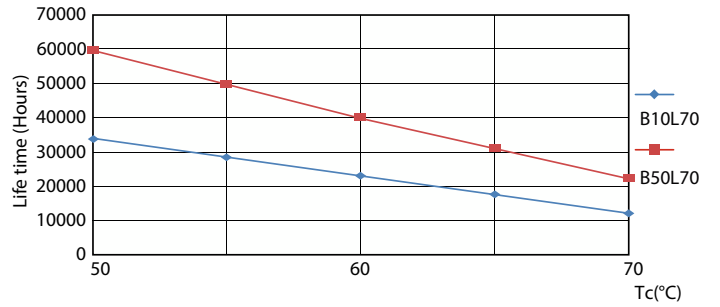
Lifetime



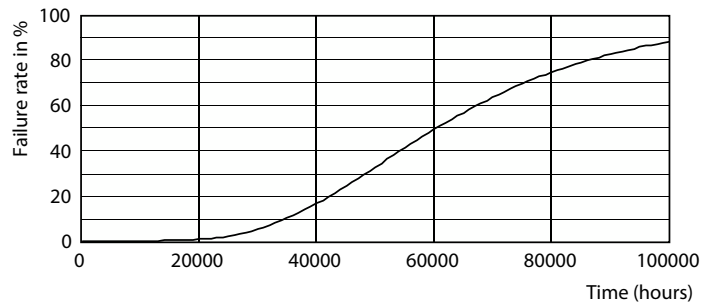
Lumen Maintenance Diagram - MAS LEDtube 600mm HO 8W865 T8



Lumen Maintenance Diagram - MAS LEDtube 600mm HO 8W865 T8



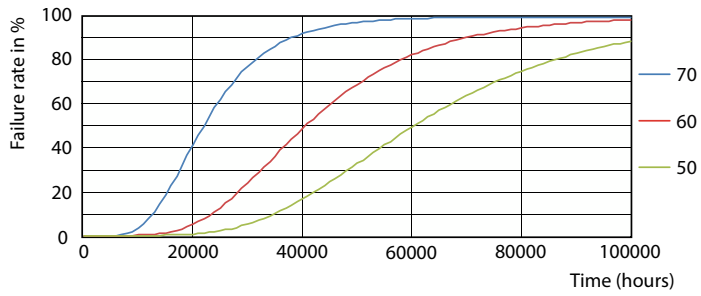
LEDtube 60K 5070 LifetimeVsTc-LED



Life Expectancy Diagram

MASTER LEDtube T8

Lifetime



LEDtube 60K 5070 FailureRate-LED

