



# MASTER LEDtube T8

## MASTER LEDtube 600mm HO 8W840 T8

MASTER, LEDtube, T8, EM/Mains, Single-end, 600 mm, 220-240 V, 8 W, 18W TL-D, 4000 K, 1200 lm, 60000 hour(s)

The Philips MASTER LEDtube integrates a LED light source into a traditional fluorescent form factor. Its unique design creates a perfectly uniform visual appearance which cannot be distinguished from traditional fluorescent. For those that are looking for value for money within limited budget and re-lamping efforts for better light effect and lifetime.

### Warnings and Safety

• -

### Product data

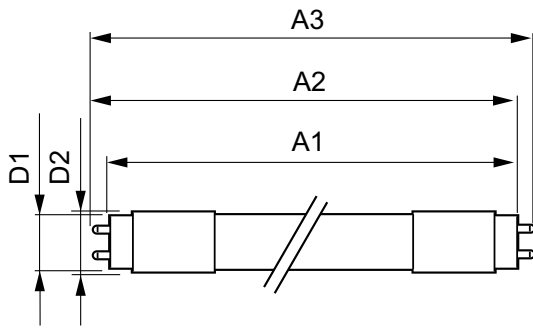
General Information		LLMF At End Of Nominal Lifetime (Nom)		70 %
Cap-Base	G13	Photobiological safety according to EN 62471 RGO		
Nominal lifetime	60,000 hour(s)	Operating and Electrical		
Switching Cycle	200,000	Input Frequency	50 to 60 Hz	
Lighting Technology	LEDtube	Power Consumption	8 W	
Light Technical		Lamp Current (Max)	40 mA	
Color Code	840 [CCT of 4000K]	Lamp Current (Min)	37 mA	
Beam Angle (Nom)	190 degree(s)	Wattage Equivalent	18 W	
Luminous Flux	1,200 lm	Starting Time (Nom)	0.5 s	
Color Designation	Cool White (CW)	Warm-up time to 60% light	0.5 s	
Correlated Color Temperature (Nom)	4000 K	Power Factor (Fraction)	0.9	
Luminous Efficacy (rated) (Nom)	150 lm/W	Voltage (Nom)	220-240 V	
Color Consistency	<6	LED alternative to fluorescent lamp power	18W TL-D	
Color rendering index (CRI)	80			

# MASTER LEDtube T8

Ballast Compatibility	EM/Mains
<b>Temperature</b>	
T-Case Maximum (Nom)	50 °C
<b>Controls and Dimming</b>	
Dimmable	No
<b>Mechanical and Housing</b>	
Bulb Finish	Frosted
Bulb Material	Plastic
Product Length	600 mm
Bulb Shape	T8
Net Weight (Piece)	0.090 kg
<b>Approval and Application</b>	
Energy Saving Product	Yes
Approval Marks	RoHS compliance KEMA Keur certificate

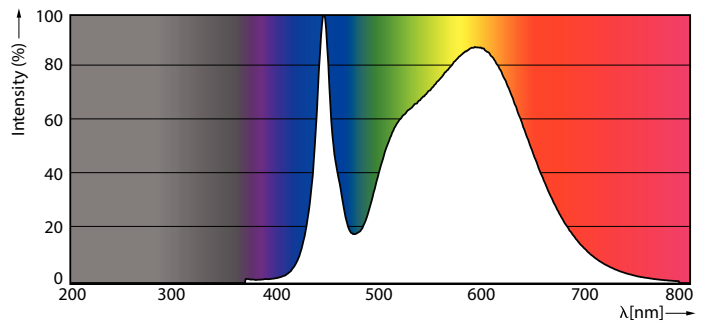
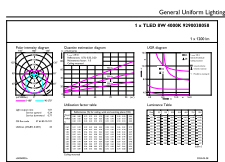
EU RoHS compliant	Yes
Ambient temperature range	-20 to +45 °C
<b>Application Conditions</b>	
Wireless Technology	Not applicable
<b>Product Data</b>	
Order product name	MAS LEDtube 600mm HO 8W840 T8
Full product name	MASTER LEDtube 600mm HO 8W840 T8
Full product code	872016931593800
Order code	31593800
Material Nr. (12NC)	929003805808
Numerator - Quantity Per Pack	1
EAN/UPC - Product/Case	8720169315938
Numerator - Packs per outer box	20
EAN/UPC - Case	8720169315945

## Dimensional drawing



Product	D1	D2	A1	A2	A3
MAS LEDtube 600mm HO 8W840 T8	25.8 mm	28 mm	595.7 mm	598.8 mm	604 mm

## Photometric data

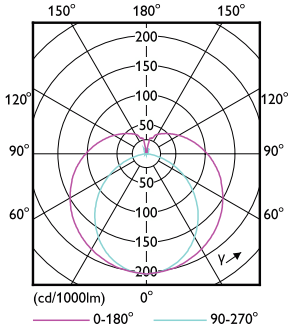


General uniform lighting - MAS LEDtube 600mm HO 8W840 T8

Spectral Power Distribution Colour - MAS LEDtube 600mm HO 8W840 T8

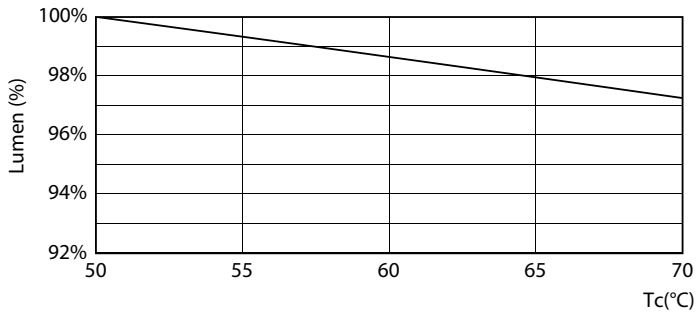
# MASTER LEDtube T8

## Photometric data

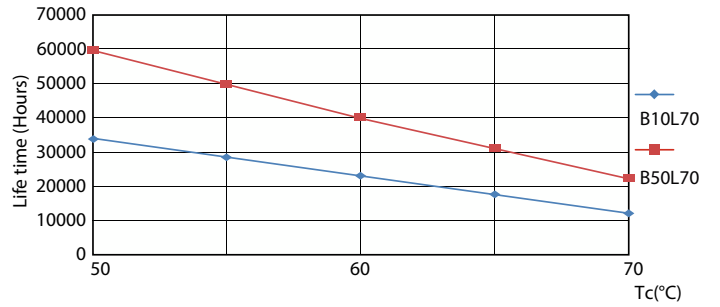


Light Distribution Diagram - MAS LEDtube 600mm HO 8W840 T8

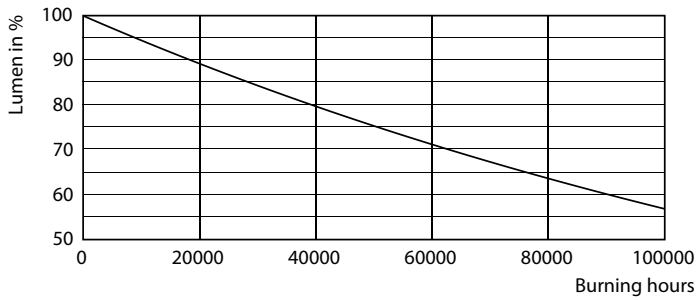
## Lifetime



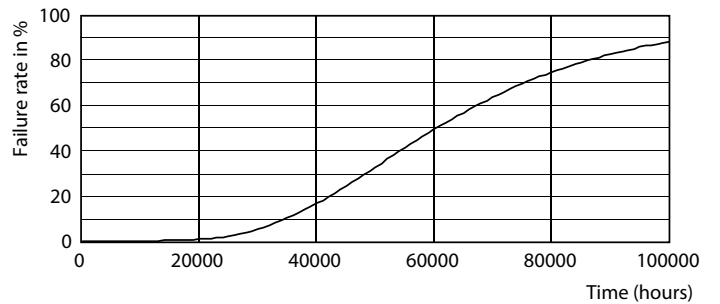
Lumen Maintenance Diagram - MAS LEDtube 600mm HO 8W840 T8



LEDtube 60K 5070 LifetimeVsTc-LED



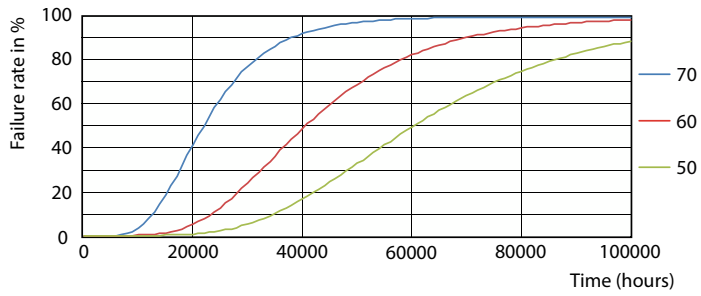
Lumen Maintenance Diagram - MAS LEDtube 600mm HO 8W840 T8



Life Expectancy Diagram

# MASTER LEDtube T8

## Lifetime



LEDtube 60K 5070 FailureRate-LED

