



# MASTER LED tube InstantFit HF T5



## MAS LEDtube HF 600mm HE 7W 865 T5

MASTER, LEDtube, T5, HF, 600 mm, 7 W, 14W TL5 HE, 6500 K, 1050 lm, CRI 80, 60000 h

MASTER, LEDtube, T5, HF, 600 mm, 7 W, LED alternative to 14W TL5 HE, 6500 K, 1050 lm, CRI 80, 60000 h, 150 lm/W, EEL D, G5, Glass, 600 mm, RG0, SDCM 6, PF 0.92, IP20

### Product data

General Information	
Cap base	G5
Nominal lifetime	60,000 h
Switching Cycle	50,000
Lighting Technology	LEDtube
Flux measurement reference	Sphere
Warranty period	5 years
Light Technical	
Colour Code	865 [CCT of 6500K]
Beam angle (nom.)	200 degree(s)
Luminous Flux	1,050 lm
Colour designation	Cool Daylight
Correlated Colour Temperature (Nom)	6500 K
Luminous efficacy (rated) (nom.)	150 lm/W
Colour consistency	<6
Colour rendering index (CRI)	80
LLMF at end of nominal lifetime (nom.)	70 %

Photobiological safety according to EN 62471	RG0
Operating and Electrical	
Input frequency	30 K to 100 K Hz
Power Consumption	7 W
Lamp current (max.)	350 mA
Lamp current (min.)	150 mA
Starting time (nom.)	0.5 s
Warm-up time to 60% light	0.5 s
Power Factor (Fraction)	0.92
Voltage (nom.)	40-70 V
LED alternative to fluorescent lamp power	14W TL5 HE
Inrush current at mains	-
Max. lamp no. on MCB B type 10A – Mains	-
Max. lamp no. on MCB B type 10A – EM ballast without Compensation Capacitor.	-
Max. lamp no. on MCB B type 10A – EM ballast with Compensation Capacitor.	-

# MASTER LED tube InstantFit HF T5

Max. lamp no. on MCB B type 16A — Mains	-
Max. lamp no. on MCB B type 16A – EM ballast without Compensation Capacitor.	-
Max. lamp no. on MCB B type 16A – EM ballast with Compensation Capacitor.	-
Ballast Compatibility	HF

## Temperature

T-Case maximum (nom.)	50 °C
-----------------------	-------

## Controls and Dimming

Dimmable	Yes – Check ballast compatibility
----------	-----------------------------------

## Mechanical and Housing

Lamp Finish	Frosted
Bulb material	Glass
Product length	600 mm
Bulb shape	T5
Net Weight (Piece)	0.085 kg

## Approval and Application

Energy Efficiency Class	D
Energy-saving product	Yes
Approval marks	RoHS compliance KEMA Keur certificate

Energy consumption kWh/1,000 hours	7 kWh
EPREL Registration Number	1936618
CE mark	Yes
EU RoHS compliant	Yes
Ambient temperature range	-20 to +45 °C

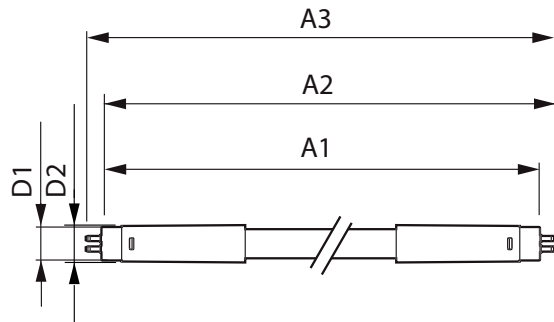
## Application Conditions

Can it be used in closed luminaires	Yes
Wireless Technology	Not applicable

## Product Data

Order product name	MAS LEDtube HF 600mm HE 7W 865 T5
Full product name	MAS LEDtube HF 600mm HE 7W 865 T5
Full EOC	872016930970800
Order code	929003795302
Material no. (12 NC)	929003795302
Numerator – quantity per pack	1
EAN/UPC – Product/Case	8720169309708
Numerator – packs per outer box	10
EAN/UPC - Case	8720169309715

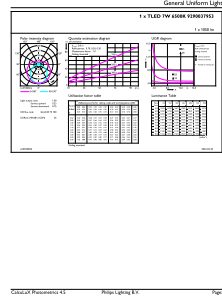
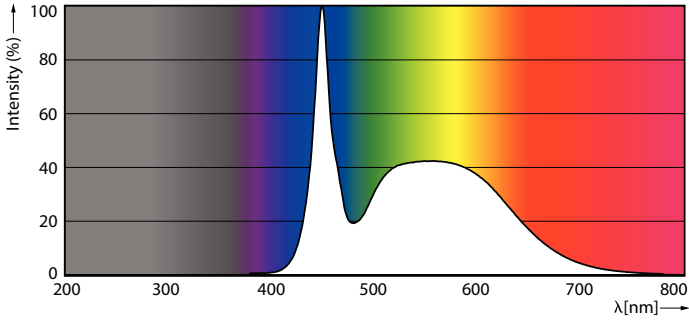
## Dimensional drawing



Product	D1	D2	A1	A2	A3
MAS LEDtube HF 600mm HE 7W 865 T5	15.7 mm	19 mm	549 mm	556 mm	563 mm

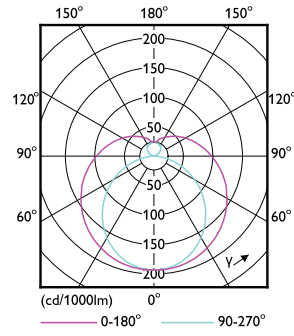
# MASTER LED tube InstantFit HF T5

## Photometric data



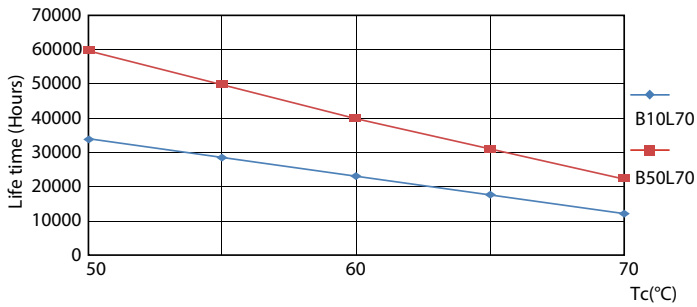
Spectral Power Distribution Colour - MAS LEDtube HF 600mm HE 7W 865 T5

General uniform lighting - MAS LEDtube HF 600mm HE 7W 865 T5

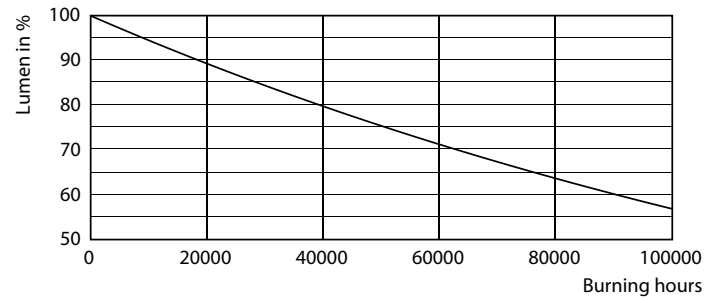


Light Distribution Diagram - MAS LEDtube HF 600mm HE 7W 865 T5

## Lifetime



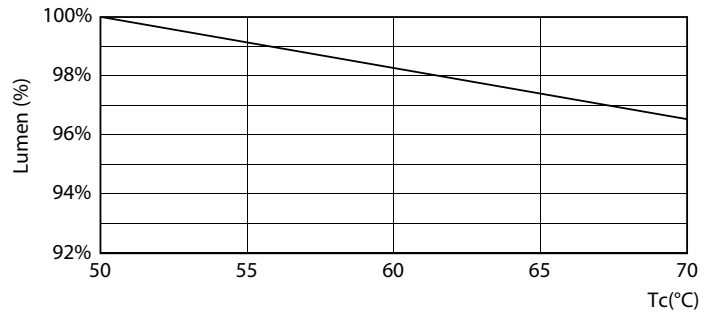
LEDtube 60K 5070 LifetimeVsTc-LED



Lumen Maintenance Diagram - MAS LEDtube HF 600mm HE 7W 865 T5

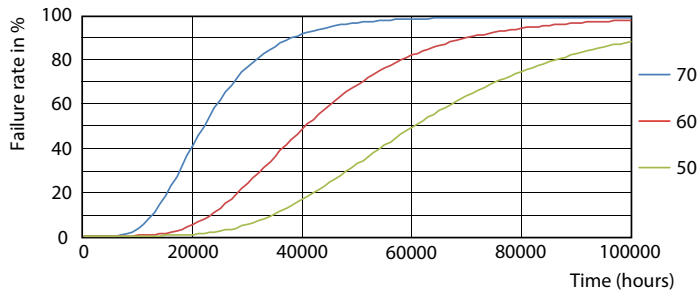
# MASTER LED tube InstantFit HF T5

## Lifetime



Life Expectancy Diagram

Lumen Maintenance Diagram - MAS LEDtube HF 600mm HE 7W 865 T5



LEDtube 60K 5070 FailureRate-LED

