



# MasterClass MainsFit (UL Type-B) T8

## 9.5T8/MAS/48-850/MF18/G/DIM UE 25/1

MasterClass, LEDtube, T8, 1200 mm, 9.5 W, 5000 K, 1810 lm, 50000 hour(s)

The MasterClass MainsFit (UL Type B) T8 lamps are designed to be the perfect retrofit solution to move from traditional fluorescent lamps to energy saving LEDs. This ballast bypass lamp has everything needed built into the lamp with proven energy savings, long life (70k hours), surge suppression and industry leading safety features. All lamps in the MasterClass MainsFit family are double-ended to help simplify the installation. In addition, all lamps meet the Philips standards for light quality so that end users will be in a comfortable environment regardless of the MasterClass MainsFit lamp type.

### Product data

General Information		Color Consistency	
Cap-Base	G13	Color Consistency	<5
Nominal lifetime	50,000 hour(s)	Color rendering index (CRI)	80
Switching Cycle	50,000	LLMF At End Of Nominal Lifetime (Nom)	70 %
Lighting Technology	LEDtube	Operating and Electrical	
Light Technical		Input Frequency	50 to 60 Hz
Color Code	850 [CCT of 5000K]	Power Consumption	9.5 W
Beam Angle (Nom)	220 degree(s)	Lamp Current (Max)	84 mA
Luminous Flux	1,810 lm	Lamp Current (Min)	39 mA
Color Designation	Daylight	Wattage Equivalent	32 W
Correlated Color Temperature (Nom)	5000 K	Starting Time (Nom)	0.5 s
Luminous Efficacy (rated) (Nom)	190 lm/W	Warm-up time to 60% light	0.5 s
		Power Factor (Fraction)	0.9

# MasterClass MainsFit (UL Type-B) T8

Voltage (Nom)	120-277 V
UL Type	UL Type B

## Temperature

T-Case Maximum (Nom)	45 °C
----------------------	-------

## Controls and Dimming

Dimmable	Only with specific dimmers
----------	----------------------------

## Mechanical and Housing

Bulb Finish	Frosted
Bulb Material	Glass
Product Length	1,200 mm
Bulb Shape	T8
Net Weight (Piece)	0.200 kg

## Approval and Application

Energy Saving Product	Yes
Approval Marks	RoHS compliance UL certificate DLC compliance

EU RoHS compliant	Yes
Ambient temperature range	-20 to +45 °C

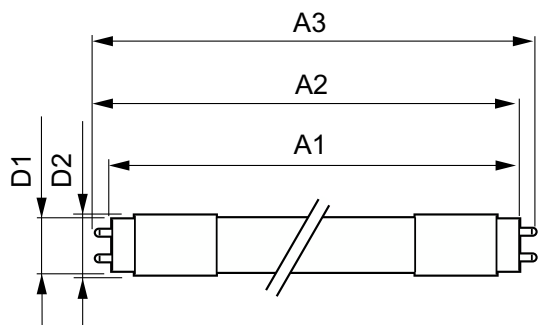
## Application Conditions

can it be used in closed luminaires	Yes
Wireless Technology	Not applicable

## Product Data

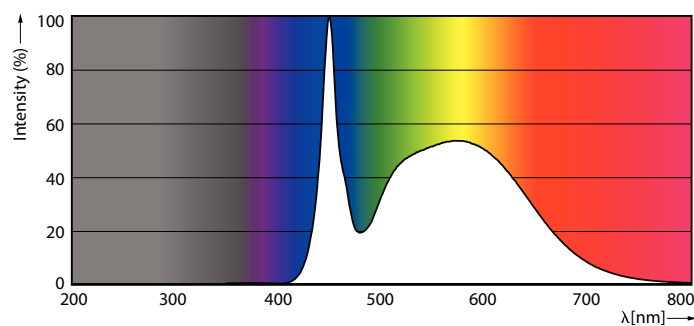
Order product name	9.5T8/MAS/48-850/MF18/G/DIM UE 25/1
Full product name	9.5T8/MAS/48-850/MF18/G/DIM UE 25/1
Order code	929003795004
Material Nr. (12NC)	929003795004
Numerator - Quantity Per Pack	1
EAN/UPC - Product/Case	046677588618
Numerator - Packs per outer box	25
EAN/UPC - Case	50046677588613

## Dimensional drawing

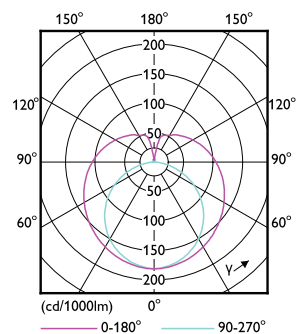


Product	D1	D2	A1	A2	A3
9.5T8/MAS/48-850/ MF18/G/DIM UE 25/1	25.7 mm	28 mm	1,198.2 mm	1,205.3 mm	1,212.4 mm

## Photometric data



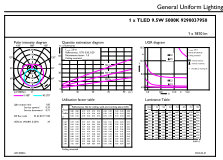
Spectral Power Distribution Colour - 9.5T8/MAS/48-850/MF18/G/DIM UE 25/1



Light Distribution Diagram - 9.5T8/MAS/48-850/MF18/G/DIM UE 25/1

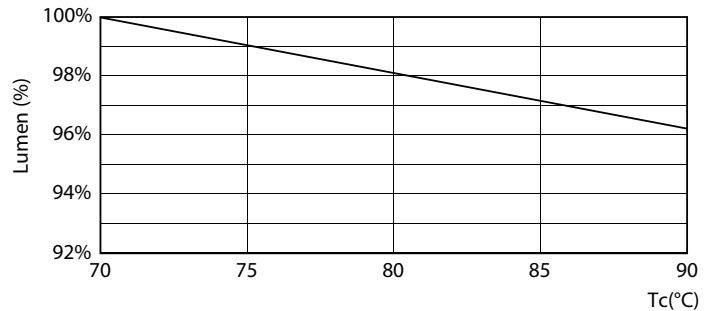
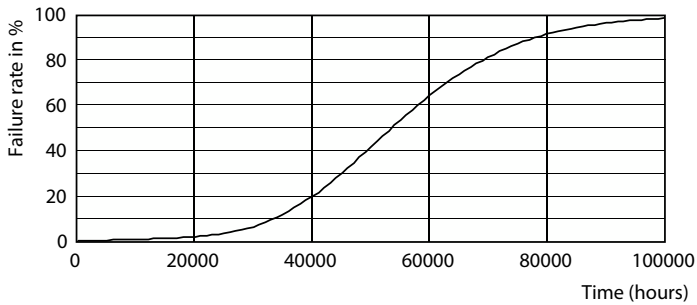
# MasterClass MainsFit (UL Type-B) T8

## Photometric data

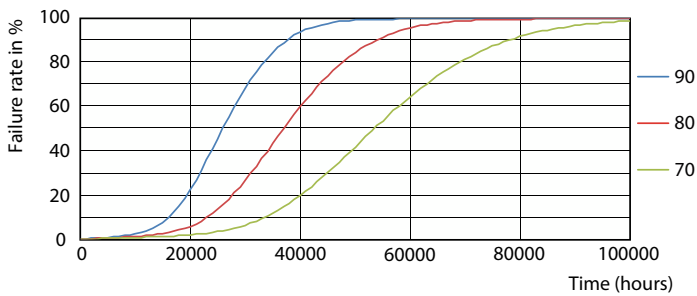


General uniform lighting - 9.5T8/MAS/48-850/MF18/G/DIM UE 25/1

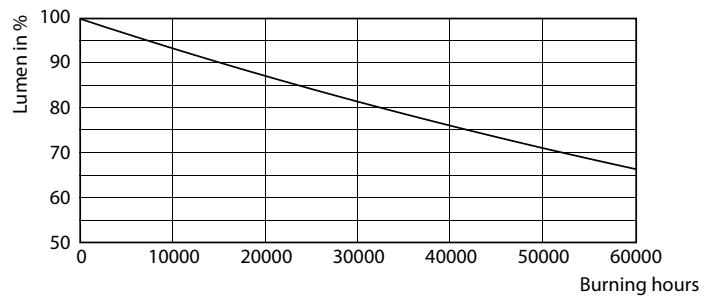
## Lifetime



Life Expectancy Diagram



Lumen Maintenance Diagram - 9.5T8/MAS/48-850/MF18/G/DIM UE 25/1

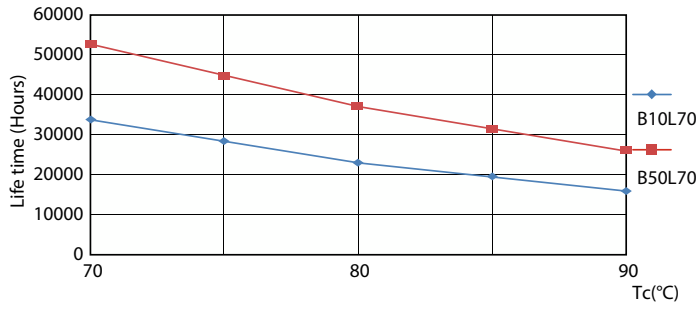


LEDtube 50K 7090 FailureRate-LED

Lumen Maintenance Diagram - 9.5T8/MAS/48-850/MF18/G/DIM UE 25/1

# MasterClass MainsFit (UL Type-B) T8

## Lifetime



LifetimeVsTc

