



CorePro LEDtube InstantFit HF T5



CorePro LEDtube HF 1200mm HO 26.7W 840T5

CorePro, LEDtube, T5, HF, 1200 mm, 26.7 W, 54W TL5 HO, 4000 K, 3900 lm, CRI 80, 50000 h

CorePro, LEDtube, T5, HF, 1200 mm, 26.7 W, LED alternative to 54W TL5 HO, 4000 K, 3900 lm, CRI 80, 50000 h, 146 lm/W, EEL D, G5, Glass, 1200 mm, RGO, SDCM 6, PF 0.9, IP20

Product data

General Information		Photobiological safety according to EN 62471	
Cap base	G5		RGO
Nominal lifetime	50,000 h	Operating and Electrical	
Switching Cycle	50,000	Input frequency	30 K to 60 K Hz
Lighting Technology	LEDtube	Power Consumption	26.7 W
Flux measurement reference	Sphere	Lamp current (max.)	620 mA
Warranty period	3 years	Lamp current (min.)	300 mA
Light Technical		Starting time (nom.)	0.5 s
Colour Code	840 [CCT of 4000K]	Warm-up time to 60% light	0.5 s
Beam angle (nom.)	200 degree(s)	Power Factor (Fraction)	0.9
Luminous Flux	3,900 lm	Voltage (nom.)	20-90 V
Colour designation	Cool White (CW)	LED alternative to fluorescent lamp power	54W TL5 HO
Correlated Colour Temperature (Nom)	4000 K	Inrush current at mains	-
Luminous efficacy (rated) (nom.)	146 lm/W	Max. lamp no. on MCB B type 10A – Mains	-
Colour consistency	<6	Max. lamp no. on MCB B type 10A – EM ballast without Compensation Capacitor.	-
Colour rendering index (CRI)	80	Max. lamp no. on MCB B type 10A – EM ballast with Compensation Capacitor.	-
LLMF at end of nominal lifetime (nom.)	70 %		

CorePro LEDtube InstantFit HF T5

Max. lamp no. on MCB B type 16A — Mains	-
Max. lamp no. on MCB B type 16A – EM ballast without Compensation Capacitor.	-
Max. lamp no. on MCB B type 16A – EM ballast with Compensation Capacitor.	-
Ballast Compatibility	HF

Temperature

T-Case maximum (nom.)	45 °C
-----------------------	-------

Controls and Dimming

Dimmable	No
----------	----

Mechanical and Housing

Lamp Finish	Frosted
Bulb material	Glass
Product length	1,200 mm
Bulb shape	T5
Net Weight (Piece)	0.160 kg

Approval and Application

Energy Efficiency Class	D
Energy-saving product	Yes
Approval marks	RoHS compliance KEMA Keur certificate

Energy consumption kWh/1,000 hours	27 kWh
EPREL Registration Number	1857691
CE mark	Yes
EU RoHS compliant	Yes
Ambient temperature range	-20 to +45 °C

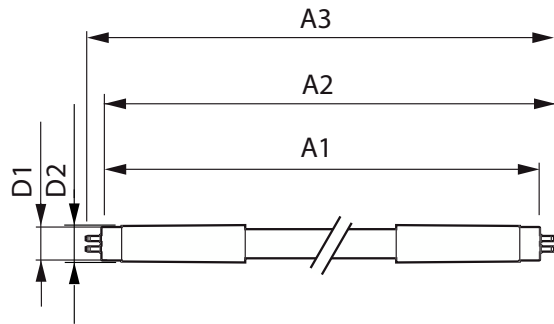
Application Conditions

Wireless Technology	Not applicable
---------------------	----------------

Product Data

Order product name	CorePro LEDtube HF 1200mm HO 26.7W 840T5
Full product name	CorePro LEDtube HF 1200mm HO 26.7W 840T5
Full EOC	872016929560500
Order code	929003775102
Material no. (12 NC)	929003775102
Numerator – quantity per pack	1
EAN/UPC – Product/Case	8720169295605
Numerator – packs per outer box	10
EAN/UPC - Case	8720169295612

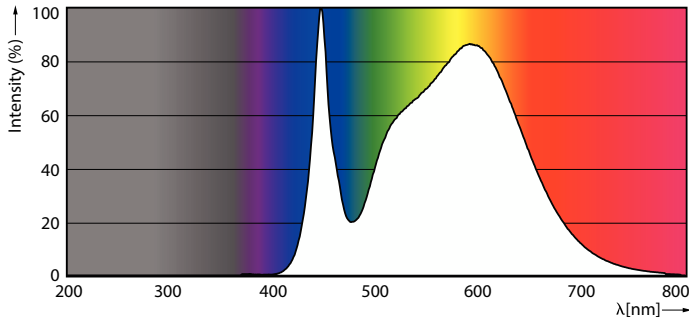
Dimensional drawing



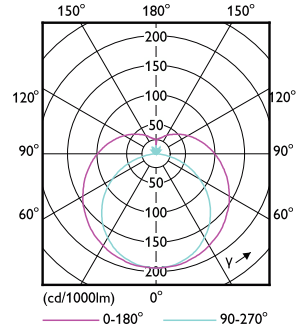
Product	D1	D2	A1	A2	A3
CorePro LEDtube HF 1200mm HO 26.7W 840T5	15.5 mm	16/19 mm	1,149 mm	1,156 mm	1,163 mm

CorePro LEDtube InstantFit HF T5

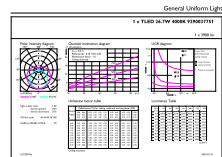
Photometric data



Spectral Power Distribution Colour - CorePro LEDtube HF 1200mm HO 26.7W 840T5



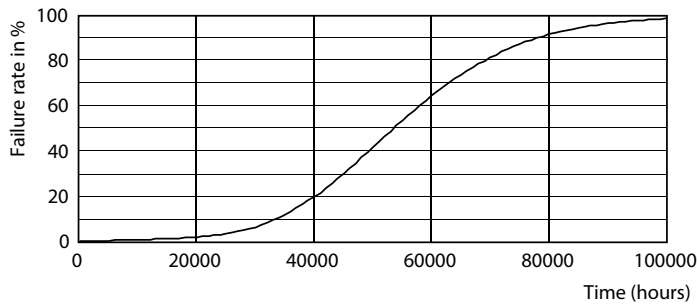
Light Distribution Diagram - CorePro LEDtube HF 1200mm HO 26.7W 840T5



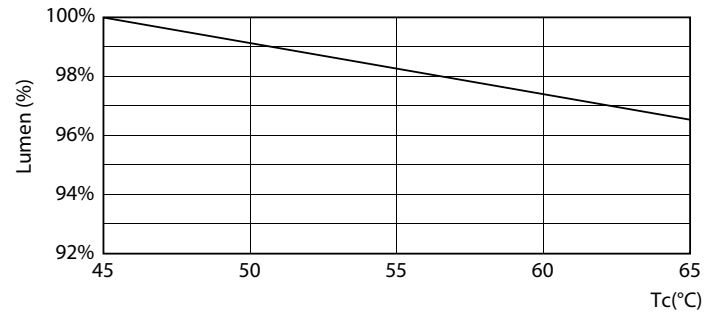
General Uniform Lighting

General uniform lighting - CorePro LEDtube HF 1200mm HO 26.7W 840T5

Lifetime



Life Expectancy Diagram



Lumen Maintenance Diagram - CorePro LEDtube HF 1200mm HO 26.7W 840T5

CorePro LEDtube InstantFit HF T5

Lifetime



FailureRate

LifetimeVsTc



Lumen Maintenance Diagram - CorePro LEDtube HF 1200mm HO 26.7W 840T5

