



CorePro LED tube InstantFit HF T5



CorePro LEDtube HF 600mm HE 7.1W 830T5

CorePro, LEDtube, T5, HF, 600 mm, 7.1 W, 14W TL5 HE, 3000 K, 1000 lm, CRI 80, 50000 hour(s)

CorePro LEDtube InstantFit HF T5 is the quick and easy way to replace T5 fluorescent tubes with a fast payback time. Designed with industry leading ballast compatibility, the product is ideal for your everyday lighting jobs. With simply plug-and-play installation, it improves energy efficiency immediately and lasts for longer than conventional T5.

Product data

General Information		Color rendering index (CRI)	
Cap-Base	G5		80
Nominal lifetime	50,000 hour(s)	LLMF At End Of Nominal Lifetime (Nom)	70 %
Switching Cycle	50,000	Photobiological safety according to EN 62471	RG0
Lighting Technology	LEDtube	Operating and Electrical	
Flux measurement reference	Sphere	Input Frequency	30K to 100K Hz
Warranty period	3 years	Power Consumption	7.1 W
Light Technical		Lamp Current (Max)	350 mA
Color Code	830 [CCT of 3000K]	Lamp Current (Min)	150 mA
Beam Angle (Nom)	200 degree(s)	Starting Time (Nom)	0.5 s
Luminous Flux	1,000 lm	Warm-up time to 60% light	0.5 s
Color Designation	White (WH)	Power Factor (Fraction)	0.9
Correlated Color Temperature (Nom)	3000 K	Voltage (Nom)	40-70 V
Luminous Efficacy (rated) (Nom)	140 lm/W	LED alternative to fluorescent lamp power	14W TL5 HE
Color Consistency	<6	Inrush current at mains	-
		Max. lamp no. on MCB B type 10A - Mains	-

CorePro LED tube InstantFit HF T5

Max. lamp no. on MCB B type 10A – EM ballast without Compensation Capacitor.	-
Max. lamp no. on MCB B type 10A – EM ballast with Compensation Capacitor.	-
Max. lamp no. on MCB B type 16A – Mains	-
Max. lamp no. on MCB B type 16A – EM ballast without Compensation Capacitor.	-
Max. lamp no. on MCB B type 16A – EM ballast with Compensation Capacitor.	-
Ballast Compatibility	HF

Temperature

T-Case Maximum (Nom)	45 °C
----------------------	-------

Controls and Dimming

Dimmable	No
----------	----

Mechanical and Housing

Bulb Finish	Frosted
Bulb Material	Glass
Product Length	600 mm
Bulb Shape	T5
Net Weight (Piece)	0.085 kg

Approval and Application

Energy Efficiency Class	E
-------------------------	---

Energy Saving Product	Yes
Approval Marks	RoHS compliance KEMA Keur certificate
Energy Consumption kWh/1000 h	8 kWh
EPREL Registration Number	1880103
CE mark	Yes
EU RoHS compliant	Yes
Ambient temperature range	-20 to +45 °C

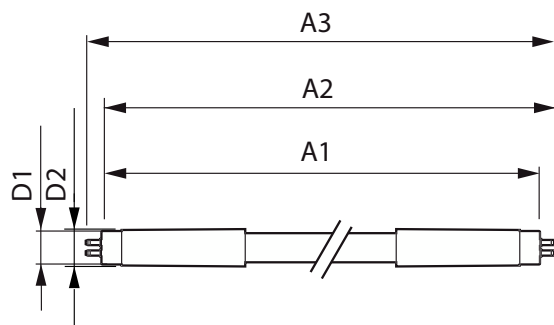
Application Conditions

Wireless Technology	Not applicable
---------------------	----------------

Product Data

Order product name	CorePro LEDtube HF 600mm HE 7.1W 830T5
Full product name	CorePro LEDtube HF 600mm HE 7.1W 830T5
Full product code	872016929540700
Order code	929003774102
Material Nr. (12NC)	929003774102
Numerator - Quantity Per Pack	1
EAN/UPC - Product/Case	8720169295407
Numerator - Packs per outer box	10
EAN/UPC - Case	8720169295414

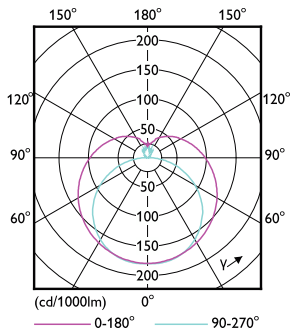
Dimensional drawing



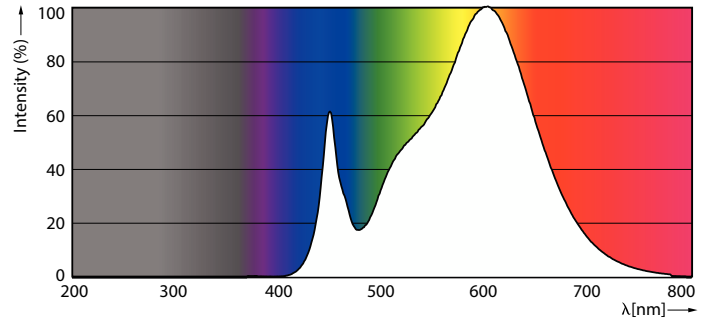
Product	D1	D2	A1	A2	A3
CorePro LEDtube HF 600mm HE 7.1W 830T5	15.5 mm	16/19 mm	549 mm	556 mm	563 mm

CorePro LED tube InstantFit HF T5

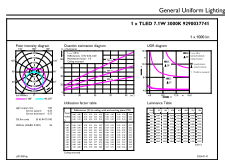
Photometric data



Light Distribution Diagram - CorePro LEDtube HF 600mm HE 7.1W 830T5



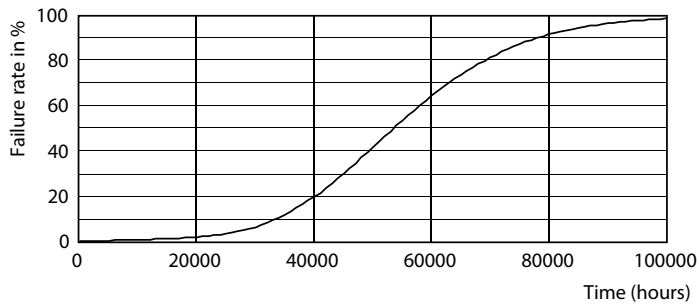
Spectral Power Distribution Colour - CorePro LEDtube HF 600mm HE 7.1W 830T5



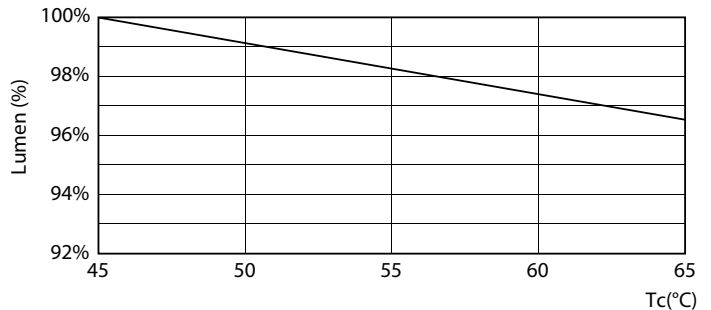
General Uniform Lighting
 Page 11

General uniform lighting - CorePro LEDtube HF 600mm HE 7.1W 830T5

Lifetime



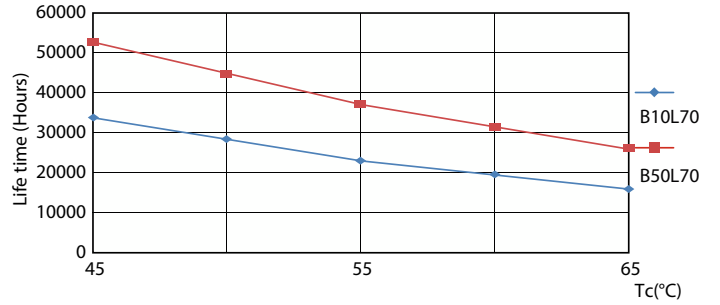
Life Expectancy Diagram



Lumen Maintenance Diagram - CorePro LEDtube HF 600mm HE 7.1W 830T5

CorePro LED tube InstantFit HF T5

Lifetime



FailureRate

LifetimeVsTc



Lumen Maintenance Diagram - CorePro LEDtube HF 600mm HE 7.1W 830T5

