



# CorePro LED PLL



## CorePro LED Urban PLL Mains 18W 830

CorePro, LED, PL-L, Mains, 410 mm, 18 W, 36W PL-L, 3000 K, 2100 lm, CRI 80, 30000 hour(s)

Philips CorePro LED PLL is the ideal uplamping solution for downlights & luminaires in a wide range of general lighting applications. It integrates a LED light source into a traditional fluorescent form factor to offer superb energy savings over a lifetime that's twice as long as fluorescent alternatives.

### Product data

General Information	
Cap-Base	2G11
Nominal lifetime	30,000 hour(s)
Switching Cycle	200,000
Lighting Technology	LED
Flux measurement reference	Sphere
Warranty period	3 years
Light Technical	
Color Code	830 [CCT of 3000K]
Beam Angle (Nom)	360 degree(s)
Luminous Flux	2,100 lm
Color Designation	White (WH)
Correlated Color Temperature (Nom)	3000 K
Luminous Efficacy (rated) (Nom)	116 lm/W
Color Consistency	<6
Color rendering index (CRI)	80
LLMF At End Of Nominal Lifetime (Nom)	70 %

Photobiological safety according to EN 62471	RG0
Operating and Electrical	
Input Frequency	50 to 60 Hz
Power Consumption	18 W
Lamp Current (Nom)	100 mA
Starting Time (Nom)	0.5 s
Warm-up time to 60% light	0.5 s
Power Factor (Fraction)	0.9
Voltage (Nom)	220-240 V
LED alternative to fluorescent lamp power	36W PL-L
Inrush current at mains	4.3
Max. lamp no. on MCB B type 10A - Mains	100
Max. lamp no. on MCB B type 10A – EM ballast without Compensation Capacitor.	-
Max. lamp no. on MCB B type 10A – EM ballast with Compensation Capacitor.	-
Max. lamp no. on MCB B type 16A - Mains	160

# CorePro LED PLL

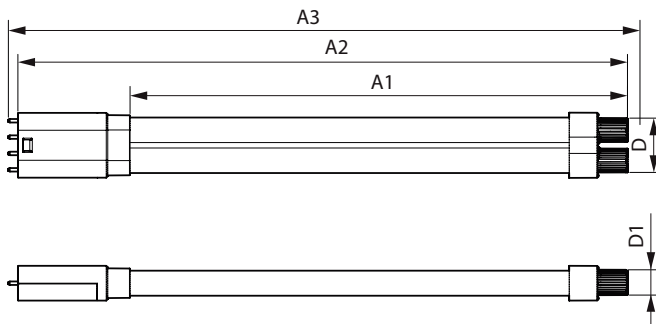
Max. lamp no. on MCB B type 16A – EM ballast without Compensation Capacitor.	-
Max. lamp no. on MCB B type 16A – EM ballast with Compensation Capacitor.	-
Ballast Compatibility	Mains
<b>Temperature</b>	
T-Case Maximum (Nom)	55 °C
<b>Controls and Dimming</b>	
Dimmable	No
<b>Mechanical and Housing</b>	
Bulb Finish	Clear
Bulb Material	Plastic
Product Length	410 mm
Bulb Shape	PL-L
Net Weight (Piece)	0.150 kg
<b>Approval and Application</b>	
Energy Efficiency Class	E
Energy Saving Product	Yes
Approval Marks	RoHS compliance CE marking KEMA Keur certificate

Energy Consumption kWh/1000 h	18 kWh
EPREL Registration Number	1826744
CE mark	Yes
EU RoHS compliant	Yes
Flickering value (PstLM) - Flickering value as per EN 61000-3-3	1
Stroboscopic effect visibility measure (SVM)	0.4
Ambient temperature range	-30 to +45 °C

## Product Data

Order product name	CorePro LED Urban PLL Mains 18W 830
Full product name	CorePro LED Urban PLL Mains 18W 830
Full product code	872016928720400
Order code	929003758402
Material Nr. (12NC)	929003758402
Numerator - Quantity Per Pack	1
EAN/UPC - Product/Case	8720169287204
Numerator - Packs per outer box	10
EAN/UPC - Case	8720169287211

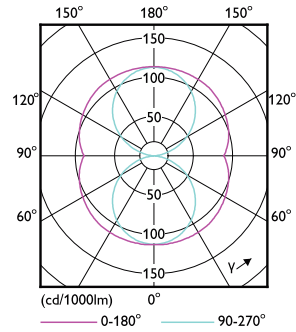
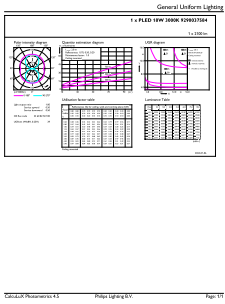
## Dimensional drawing



Product	D1	D2	A1	A2	A3
CorePro LED Urban PLL Mains 18W 830	17 mm	37 mm	335 mm	410 mm	416 mm

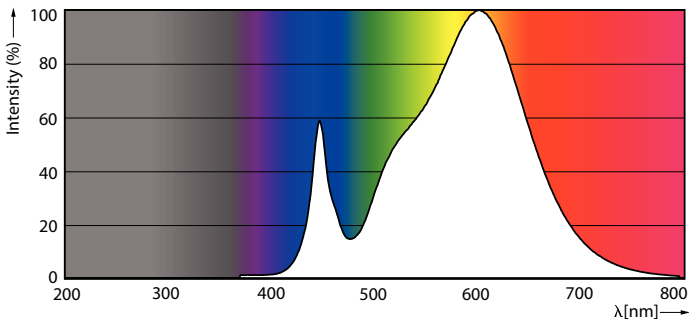
# CorePro LED PLL

## Photometric data



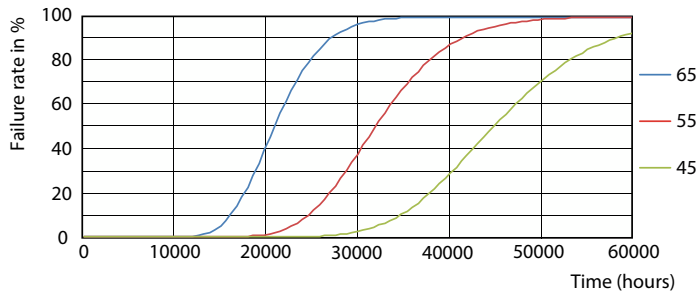
General uniform lighting - CorePro LED Urban PLL Mains 18W 830

Light Distribution Diagram - CorePro LED Urban PLL Mains 18W 830

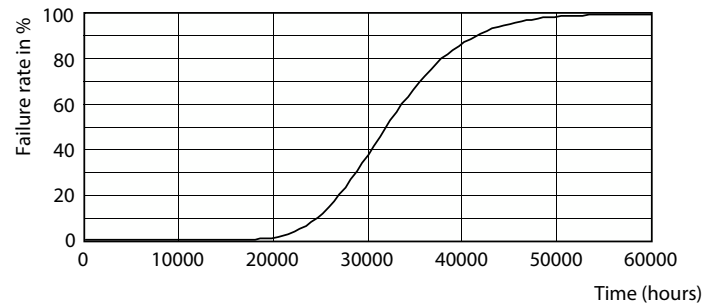


Spectral Power Distribution Colour - CorePro LED Urban PLL Mains 18W 830

## Lifetime



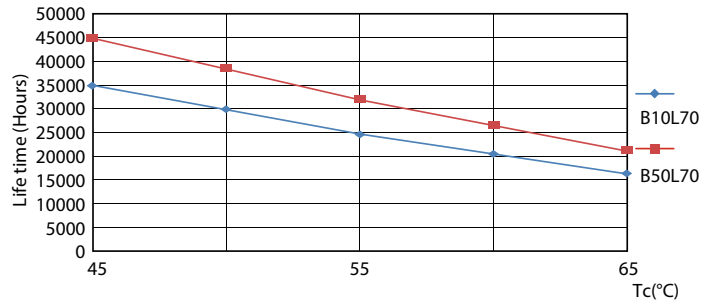
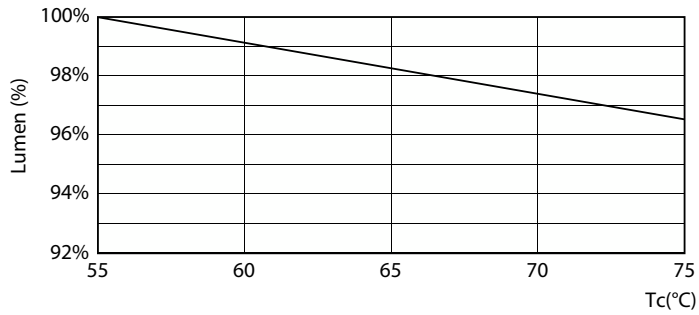
FailureRate



Life Expectancy Diagram

# CorePro LED PLL

## Lifetime



Lumen Maintenance Diagram - CorePro LED Urban PLL Mains 18W 830

LifetimeVsTc



Lumen Maintenance Diagram - CorePro LED Urban PLL Mains 18W 830

