



CorePro LED PLC 4P



CorePro LED PLC 5.5W 830 4P G24q-1

CorePro, LED, PL-C, HF/Mains, 128 mm, 5.5 W, 13W PL-C, 3000 K, 600 lm, CRI 82, 30000 hour(s)

The CorePro LED PLC 4P integrates a LED light source into a traditional fluorescent form factor. This product is the ideal solution for uplampping in general lighting applications: it meets basic lighting requirements, offers significant energy savings, and is environmentally friendly.

Product data

General Information	
Cap-Base	G24Q-1 Rotatable end-cap
Nominal lifetime	30,000 hour(s)
Switching Cycle	200,000
Lighting Technology	LED
Flux measurement reference	Sphere
Warranty period	3 years
Light Technical	
Color Code	830 [CCT of 3000K]
Beam Angle (Nom)	120 degree(s)
Luminous Flux	600 lm
Color Designation	White (WH)
Correlated Color Temperature (Nom)	3000 K
Luminous Efficacy (rated) (Nom)	109 lm/W
Color Consistency	<6
Color rendering index (CRI)	82
LLMF At End Of Nominal Lifetime (Nom)	70 %

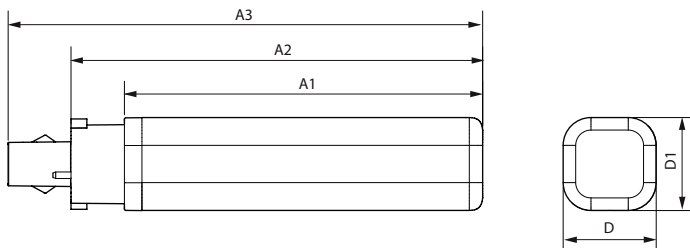
Operating and Electrical	
Input Frequency	50 to 60 Hz
Power Consumption	5.5 W
Lamp Current (Nom)	30 mA
Starting Time (Nom)	0.5 s
Warm-up time to 60% light	0.5 s
Power Factor (Fraction)	0.9
Voltage (Nom)	220-240 V
LED alternative to fluorescent lamp power	13W PL-C
Inrush current at mains	6
Max. lamp no. on MCB B type 10A - Mains	266
Max. lamp no. on MCB B type 10A – EM ballast without Compensation Capacitor.	-
Max. lamp no. on MCB B type 10A – EM ballast with Compensation Capacitor.	-
Max. lamp no. on MCB B type 16A - Mains	420
Max. lamp no. on MCB B type 16A – EM ballast without Compensation Capacitor.	-

CorePro LED PLC 4P

Max. lamp no. on MCB B type 16A – EM ballast with Compensation Capacitor.	-
Ballast Compatibility	HF/Mains
Temperature	
T-Case Maximum (Nom)	70 °C
Controls and Dimming	
Dimmable	No
Mechanical and Housing	
Bulb Finish	Frosted
Bulb Material	Plastic
Product Length	128 mm
Bulb Shape	PL-C
Net Weight (Piece)	0.100 kg
Approval and Application	
Energy Efficiency Class	F
Energy Saving Product	Yes
Approval Marks	RoHS compliance
Energy Consumption kWh/1000 h	6 kWh
EPREL Registration Number	1945441
CE mark	Yes

EU RoHS compliant	Yes
Flickering value (PstLM) - Flickering value as per EN 61000-3-3	1
Stroboscopic effect visibility measure (SVM)	0.4
Ambient temperature range	-20 to +45 °C
Application Conditions	
can it be used in closed luminaires	Yes
Product Data	
Order product name	CorePro LED PLC 5.5W 830 4P G24q-1
Full product name	CorePro LED PLC 5.5W 830 4P G24q-1
Full product code	872016929041900
Order code	929003757602
Material Nr. (12NC)	929003757602
Numerator - Quantity Per Pack	1
EAN/UPC - Product/Case	8720169290419
Numerator - Packs per outer box	10
EAN/UPC - Case	8720169290426

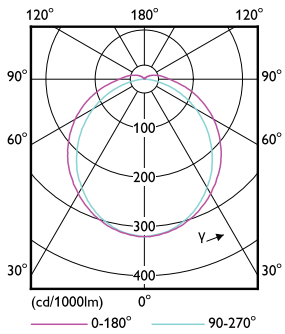
Dimensional drawing



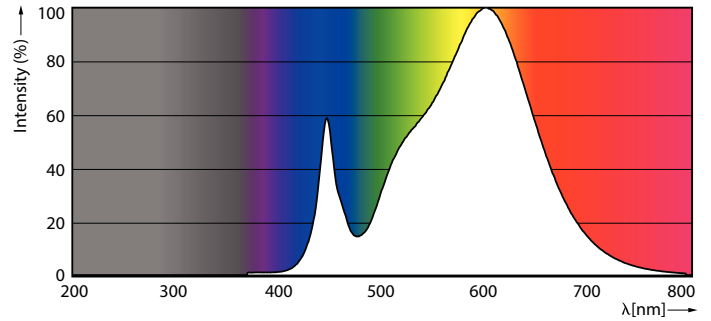
Product	D1	D2	A1	A2	A3
CorePro LED PLC 5.5W 830 4P G24q-1	34 mm	34 mm	109 mm	128 mm	144 mm

CorePro LED PLC 4P

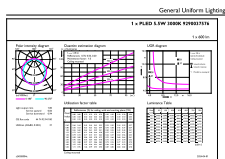
Photometric data



Light Distribution Diagram - CorePro LED PLC 5.5W 830 4P G24q-1



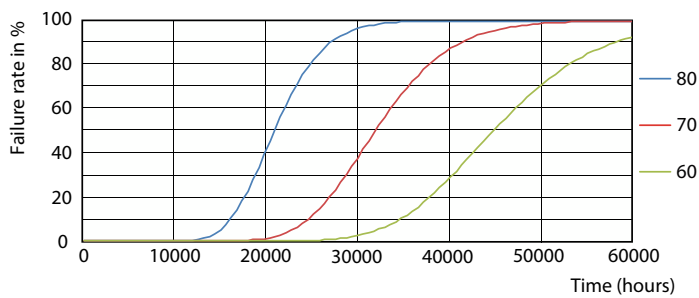
Spectral Power Distribution Colour - CorePro LED PLC 5.5W 830 4P G24q-1



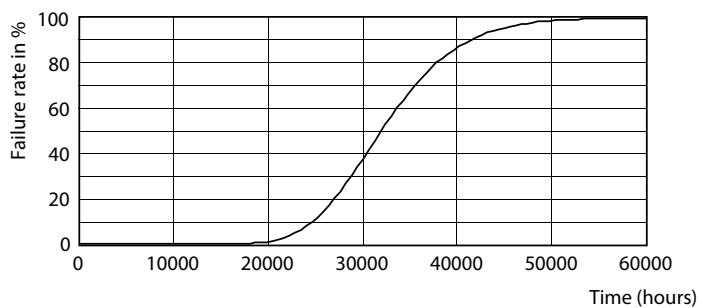
General uniform lighting - CorePro LED PLC 5.5W 830 4P G24q-1

General uniform lighting - CorePro LED PLC 5.5W 830 4P G24q-1

Lifetime



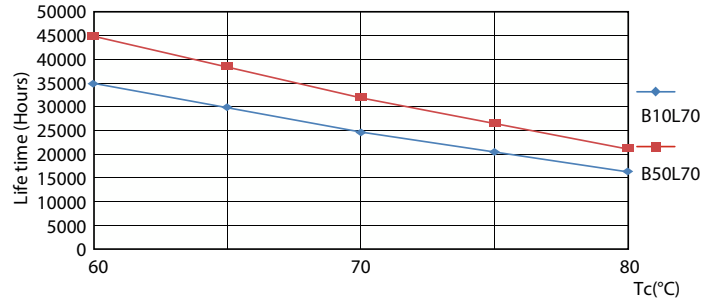
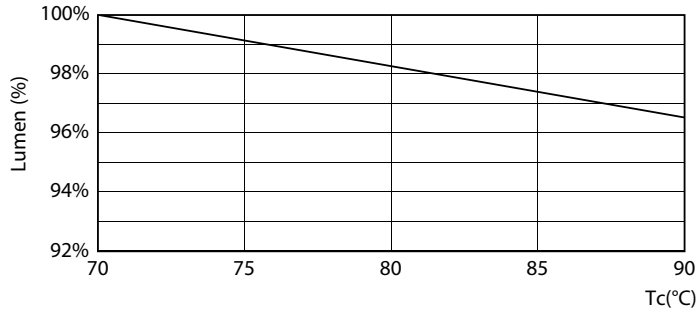
FailureRate



Life Expectancy Diagram

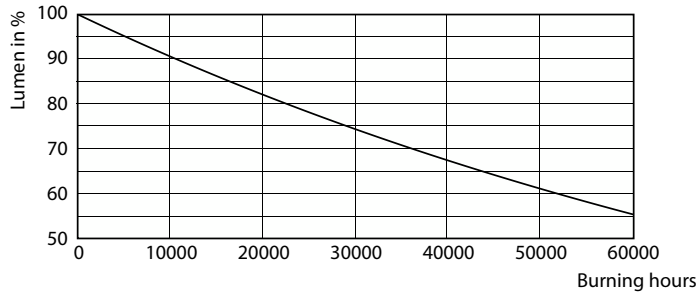
CorePro LED PLC 4P

Lifetime



Lumen Maintenance Diagram - CorePro LED PLC 5.5W 830 4P G24q-1

LifetimeVsTc



Lumen Maintenance Diagram - CorePro LED PLC 5.5W 830 4P G24q-1

