



CorePro LED PLC 2P

LED PLC 8.9W 830 2P G24d-3

LED, PL-C, EM/Mains, 148 mm, 220-240 V, 8.9 W, 26W PL-C, 3000 K, 990 lm, 30000 hour(s)

CorePro LED PLC 2P integrates a LED light source into a traditional fluorescent form factor. This product is the ideal solution for uplampping in general lighting applications: it meets basic lighting requirements, offers significant energy savings, and is environmentally friendly.

Product data

| General Information | |
|--|--------------------------|
| Cap-Base | G24D-3 Rotatable end-cap |
| Nominal lifetime | 30,000 hour(s) |
| Switching Cycle | 50,000 |
| Lighting Technology | LED |
| Warranty period | 3 years |
| Light Technical | |
| Color Code | 830 [CCT of 3000K] |
| Beam Angle (Nom) | 120 degree(s) |
| Luminous Flux | 990 lm |
| Color Designation | White (WH) |
| Correlated Color Temperature (Nom) | 3000 K |
| Luminous Efficacy (rated) (Nom) | 111 lm/W |
| Color Consistency | <6 |
| Color rendering index (CRI) | 82 |
| LLMF At End Of Nominal Lifetime (Nom) | 70 % |
| Photobiological safety according to EN 62471 RG1 | |

| Operating and Electrical | |
|---|-------------|
| Input Frequency | 50 to 60 Hz |
| Power Consumption | 8.9 W |
| Lamp Current (Nom) | 52 mA |
| Wattage Equivalent | 26 W |
| Starting Time (Nom) | 0.5 s |
| Warm-up time to 60% light | 0.5 s |
| Power Factor (Fraction) | 0.9 |
| Voltage (Nom) | 220-240 V |
| LED alternative to fluorescent lamp power | 26W PL-C |
| Ballast Compatibility | EM/Mains |
| Temperature | |
| T-Case Maximum (Nom) | 75 °C |
| Controls and Dimming | |
| Dimmable | No |

CorePro LED PLC 2P

Mechanical and Housing

| | |
|--------------------|----------|
| Bulb Finish | Frosted |
| Bulb Material | Plastic |
| Product Length | 148 mm |
| Bulb Shape | PL-C |
| Net Weight (Piece) | 0.090 kg |

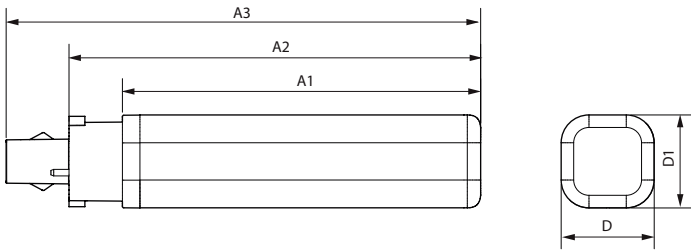
Approval and Application

| | |
|---------------------------|--|
| Energy Saving Product | Yes |
| Approval Marks | RoHS compliance CE marking KEMA Keur certificate |
| CE mark | Yes |
| EU RoHS compliant | Yes |
| Ambient temperature range | -20 to +35 °C |

Product Data

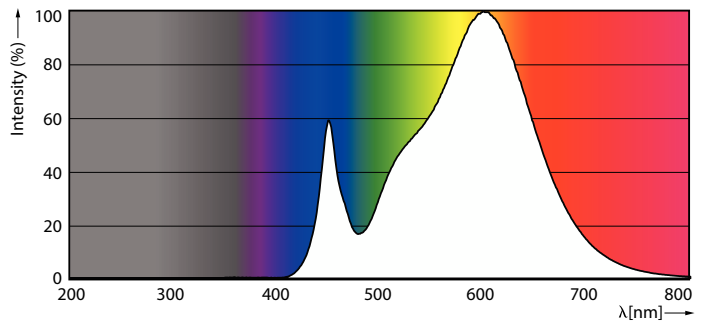
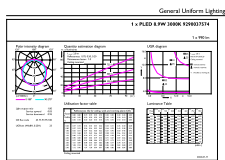
| | |
|---------------------------------|----------------------------|
| Order product name | LED PLC 8.9W 830 2P G24d-3 |
| Full product name | LED PLC 8.9W 830 2P G24d-3 |
| Full product code | 872016929646600 |
| Order code | 29646600 |
| Material Nr. (12NC) | 929003757408 |
| Numerator - Quantity Per Pack | 1 |
| EAN/UPC - Product/Case | 8720169296466 |
| Numerator - Packs per outer box | 10 |
| EAN/UPC - Case | 8720169296473 |

Dimensional drawing



| Product | D1 | D2 | A1 | A2 | A3 |
|----------------------------|-------|-------|--------|--------|--------|
| LED PLC 8.9W 830 2P G24d-3 | 34 mm | 34 mm | 129 mm | 148 mm | 171 mm |

Photometric data

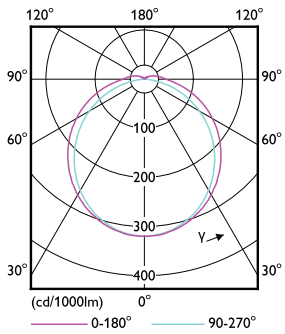


General uniform lighting - LED PLC 8.9W 830 2P G24d-3

Spectral Power Distribution Colour - LED PLC 8.9W 830 2P G24d-3

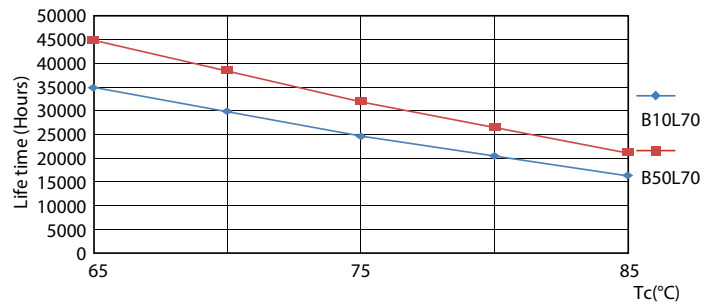
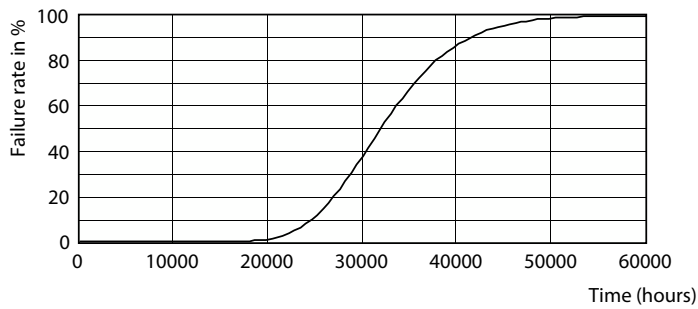
CorePro LED PLC 2P

Photometric data



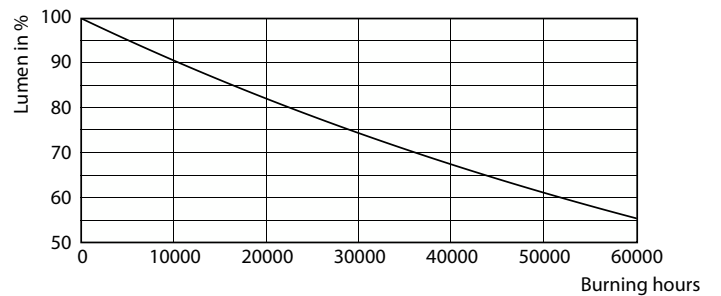
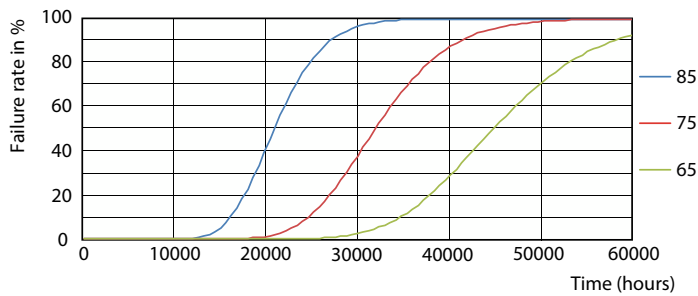
Light Distribution Diagram - LED PLC 8.9W 830 2P G24d-3

Lifetime



Life Expectancy Diagram

LifetimeVsTc

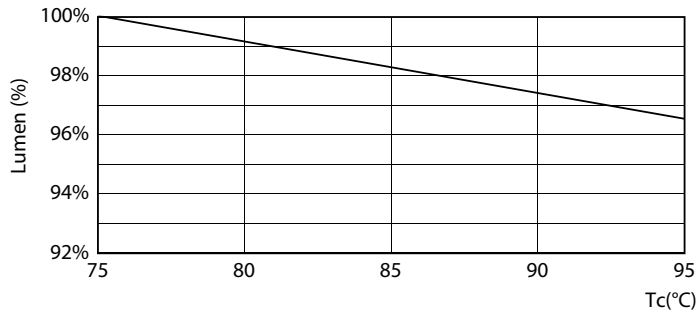


FailureRate

Lumen Maintenance Diagram - LED PLC 8.9W 830 2P G24d-3

CorePro LED PLC 2P

Lifetime



Lumen Maintenance Diagram - LED PLC 8.9W 830 2P G24d-3

