



# CorePro LED PLC 2P

## LED PLC 8.9W 830 2P G24d-3

LED, PL-C, EM/Mains, 148 mm, 220-240 V, 8.9 W, 26W PL-C, 3000 K, 990 lm, 30000 hour(s)

CorePro LED PLC 2P integrates a LED light source into a traditional fluorescent form factor. This product is the ideal solution for uplampping in general lighting applications: it meets basic lighting requirements, offers significant energy savings, and is environmentally friendly.

### Product data

General Information	
Cap-Base	G24D-3 Rotatable end-cap
Nominal lifetime	30,000 hour(s)
Switching Cycle	50,000
Lighting Technology	LED
Warranty period	3 years
Light Technical	
Color Code	830 [CCT of 3000K]
Beam Angle (Nom)	120 degree(s)
Luminous Flux	990 lm
Color Designation	White (WH)
Correlated Color Temperature (Nom)	3000 K
Luminous Efficacy (rated) (Nom)	111 lm/W
Color Consistency	<6
Color rendering index (CRI)	82
LLMF At End Of Nominal Lifetime (Nom)	70 %
Photobiological safety according to EN 62471 RG1	

Operating and Electrical	
Input Frequency	50 to 60 Hz
Power Consumption	8.9 W
Lamp Current (Nom)	52 mA
Wattage Equivalent	26 W
Starting Time (Nom)	0.5 s
Warm-up time to 60% light	0.5 s
Power Factor (Fraction)	0.9
Voltage (Nom)	220-240 V
LED alternative to fluorescent lamp power	26W PL-C
Ballast Compatibility	EM/Mains
Temperature	
T-Case Maximum (Nom)	75 °C
Controls and Dimming	
Dimmable	No

# CorePro LED PLC 2P

## Mechanical and Housing

Bulb Finish	Frosted
Bulb Material	Plastic
Product Length	148 mm
Bulb Shape	PL-C
Net Weight (Piece)	0.090 kg

## Approval and Application

Energy Saving Product	Yes
Approval Marks	RoHS compliance CE marking KEMA Keur certificate
CE mark	Yes
EU RoHS compliant	Yes
Ambient temperature range	-20 to +35 °C

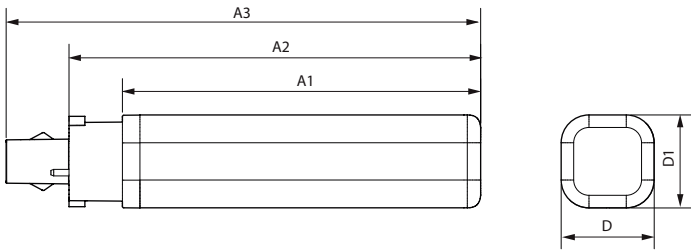
## Application Conditions

Wireless Technology	Not applicable
---------------------	----------------

## Product Data

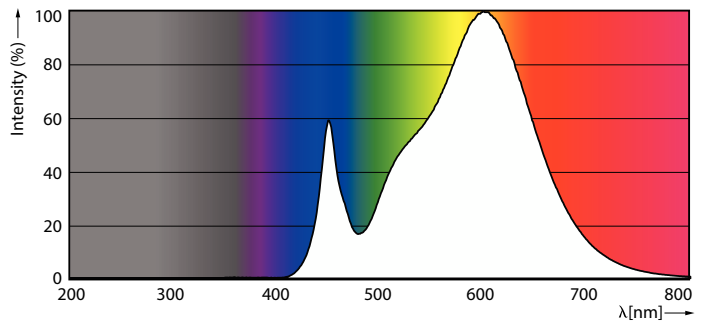
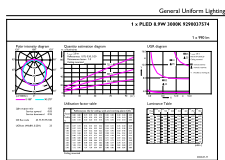
Order product name	LED PLC 8.9W 830 2P G24d-3
Full product name	LED PLC 8.9W 830 2P G24d-3
Full product code	872016929646600
Order code	929003757408
Material Nr. (12NC)	929003757408
Numerator - Quantity Per Pack	1
EAN/UPC - Product/Case	8720169296466
Numerator - Packs per outer box	10
EAN/UPC - Case	8720169296473

## Dimensional drawing



Product	D1	D2	A1	A2	A3
LED PLC 8.9W 830 2P G24d-3	34 mm	34 mm	129 mm	148 mm	171 mm

## Photometric data

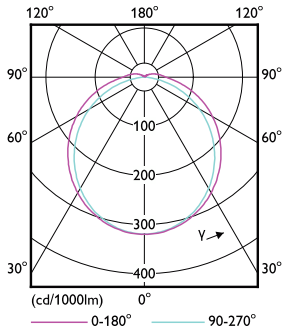


General uniform lighting - LED PLC 8.9W 830 2P G24d-3

Spectral Power Distribution Colour - LED PLC 8.9W 830 2P G24d-3

# CorePro LED PLC 2P

## Photometric data

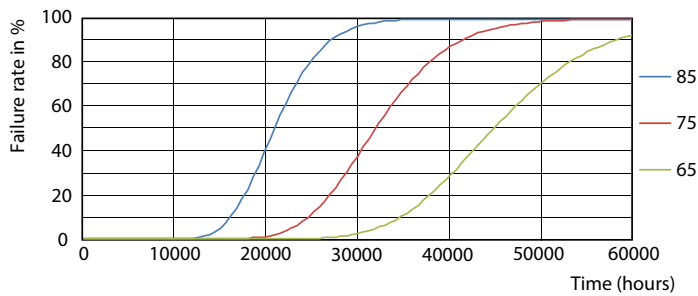


Light Distribution Diagram - LED PLC 8.9W 830 2P G24d-3

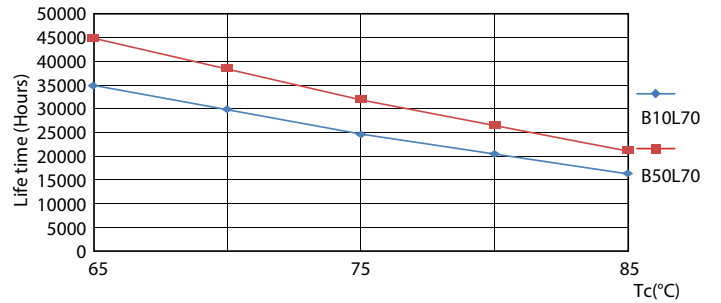
## Lifetime



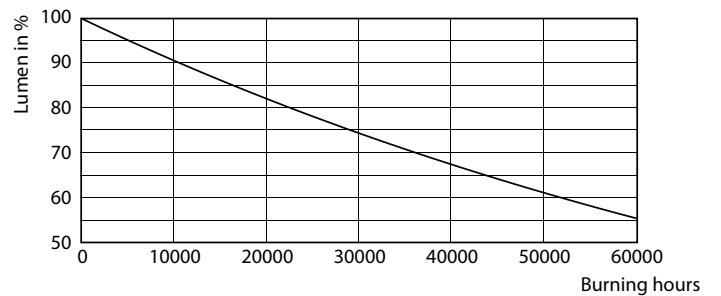
Life Expectancy Diagram



FailureRate



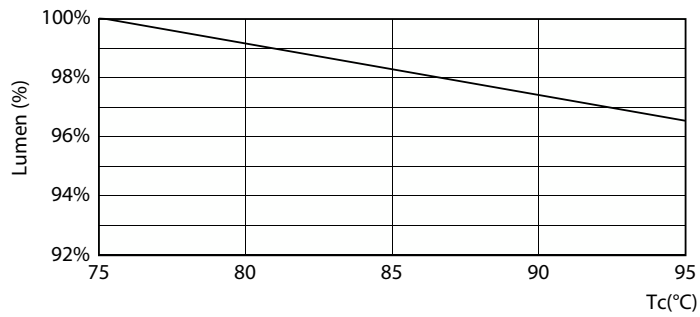
LifetimeVsTc



Lumen Maintenance Diagram - LED PLC 8.9W 830 2P G24d-3

## CorePro LED PLC 2P

### Lifetime



Lumen Maintenance Diagram - LED PLC 8.9W 830 2P G24d-3

