



CorePro LED PLC 2P

LED PLC 6.9W 840 2P G24d-2

LED, PL-C, EM/Mains, 125 mm, 220-240 V, 6.9 W, 18W PL-C, 4000 K, 770 lm, 30000 hour(s)

CorePro LED PLC 2P integrates a LED light source into a traditional fluorescent form factor. This product is the ideal solution for uplamping in general lighting applications: it meets basic lighting requirements, offers significant energy savings, and is environmentally friendly.

Product data

General Information	
Cap-Base	G24D-2 Rotatable end-cap
Nominal lifetime	30,000 hour(s)
Switching Cycle	50,000
Lighting Technology	LED
Warranty period	3 years
Light Technical	
Color Code	840 [CCT of 4000K]
Beam Angle (Nom)	120 degree(s)
Luminous Flux	770 lm
Color Designation	Cool White (CW)
Correlated Color Temperature (Nom)	4000 K
Luminous Efficacy (rated) (Nom)	111 lm/W
Color Consistency	<6
Color rendering index (CRI)	82
LLMF At End Of Nominal Lifetime (Nom)	70 %
Photobiological safety according to EN 62471 RG1	

Operating and Electrical	
Input Frequency	50 to 60 Hz
Power Consumption	6.9 W
Lamp Current (Nom)	38 mA
Wattage Equivalent	18 W
Starting Time (Nom)	0.5 s
Warm-up time to 60% light	0.5 s
Power Factor (Fraction)	0.9
Voltage (Nom)	220-240 V
LED alternative to fluorescent lamp power	18W PL-C
Ballast Compatibility	EM/Mains
Temperature	
T-Case Maximum (Nom)	75 °C
Controls and Dimming	
Dimmable	No

CorePro LED PLC 2P

Mechanical and Housing

Bulb Finish	Frosted
Bulb Material	Plastic
Product Length	125 mm
Bulb Shape	PL-C
Net Weight (Piece)	0.075 kg

Approval and Application

Energy Saving Product	Yes
Approval Marks	RoHS compliance CE marking KEMA Keur certificate
CE mark	Yes
EU RoHS compliant	Yes
Ambient temperature range	-20 to +35 °C

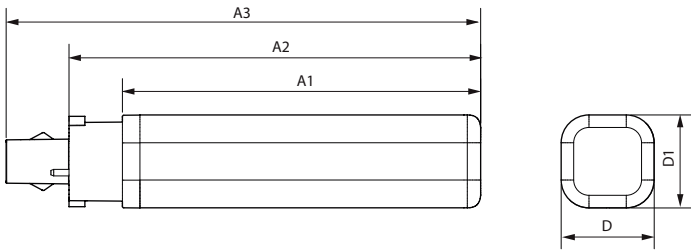
Application Conditions

Wireless Technology	Not applicable
---------------------	----------------

Product Data

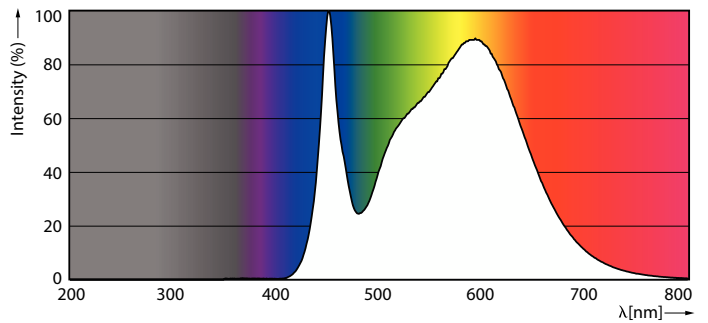
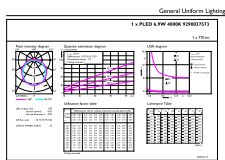
Order product name	LED PLC 6.9W 840 2P G24d-2
Full product name	LED PLC 6.9W 840 2P G24d-2
Full product code	872016929644200
Order code	929003757308
Material Nr. (12NC)	929003757308
Numerator - Quantity Per Pack	1
EAN/UPC - Product/Case	8720169296442
Numerator - Packs per outer box	10
EAN/UPC - Case	8720169296459

Dimensional drawing



Product	D1	D2	A1	A2	A3
LED PLC 6.9W 840 2P G24d-2	34 mm	34 mm	106 mm	125 mm	148 mm

Photometric data

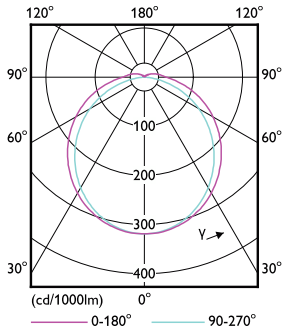


General uniform lighting - LED PLC 6.9W 840 2P G24d-2

Spectral Power Distribution Colour - LED PLC 6.9W 840 2P G24d-2

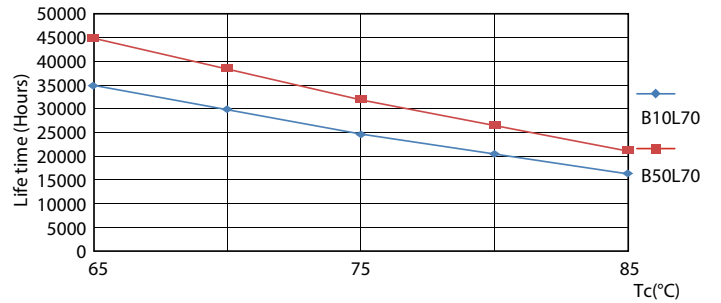
CorePro LED PLC 2P

Photometric data

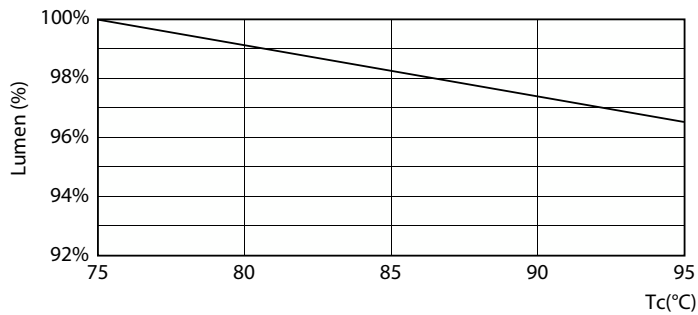


Light Distribution Diagram - LED PLC 6.9W 840 2P G24d-2

Lifetime

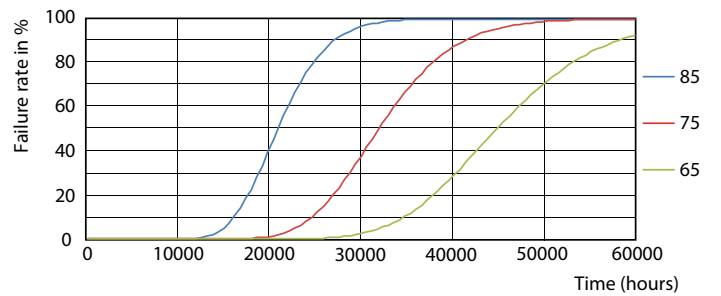


Life Expectancy Diagram



Lumen Maintenance Diagram - LED PLC 6.9W 840 2P G24d-2

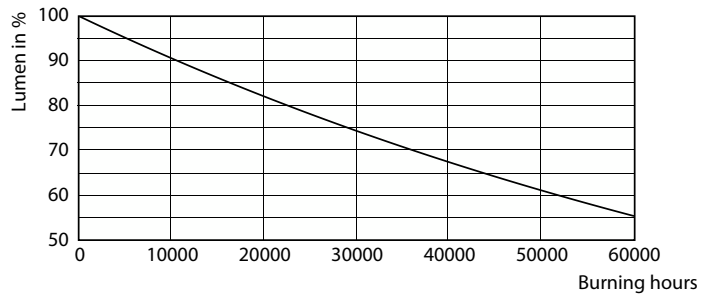
LifetimeVsTc



FailureRate

CorePro LED PLC 2P

Lifetime



Lumen Maintenance Diagram - LED PLC 6.9W 840 2P G24d-2

