



CorePro LED PLS

CorePro LED PLS 5W 830 2P G23

CorePro, LED, PL-S, EM/Mains, 144 mm, 5 W, 9/11W PL-S, 3000 K, 520 lm, CRI 82, 30000 h

The Philips CorePro LED PLS integrates a LED light source into a traditional fluorescent form factor. This product is the ideal solution for uplampping in general lighting applications: it meets basic lighting requirements, offers significant energy savings, and is environment-friendly.

Product data

General Information	
Cap-Base	G23
Nominal lifetime	30,000 h
Switching Cycle	50,000
Lighting Technology	LED
Flux measurement reference	Sphere
Warranty period	3 years
Light Technical	
Color Code	830 [CCT of 3000K]
Beam Angle (Nom)	120 degree(s)
Luminous Flux	520 lm
Color Designation	White (WH)
Correlated Color Temperature (Nom)	3000 K
Luminous Efficacy (rated) (Nom)	104 lm/W
Color Consistency	<6
Color rendering index (CRI)	82
LLMF At End Of Nominal Lifetime (Nom)	70 %

Photobiological safety according to EN 62471	RGO
Operating and Electrical	
Input Frequency	50 to 60 Hz
Power Consumption	5 W
Lamp Current (Nom)	31 mA
Starting Time (Nom)	0.5 s
Warm-up time to 60% light	0.5 s
Power Factor (Fraction)	0.9
Voltage (Nom)	220-240 V
LED alternative to fluorescent lamp power	9/11W PL-S
Inrush current at mains	6.6
Max. lamp no. on MCB B type 10A - Mains	116
Max. lamp no. on MCB B type 10A – EM ballast without Compensation Capacitor.	355
Max. lamp no. on MCB B type 10A – EM ballast with Compensation Capacitor.	-
Max. lamp no. on MCB B type 16A - Mains	186

CorePro LED PLS

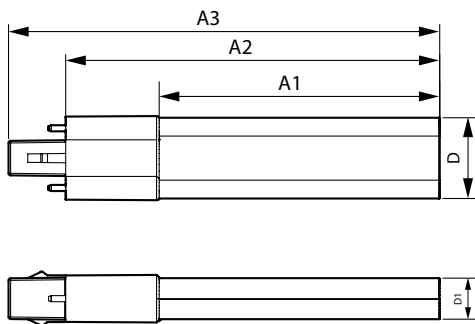
Max. lamp no. on MCB B type 16A – EM ballast without Compensation Capacitor.	569
Max. lamp no. on MCB B type 16A – EM ballast with Compensation Capacitor.	-
Ballast Compatibility	EM/Mains
Temperature	
T-Case Maximum (Nom)	50 °C
Controls and Dimming	
Dimmable	No
Mechanical and Housing	
Bulb Finish	Frosted
Bulb Material	Plastic
Product Length	144 mm
Bulb Shape	PL-S
Net Weight (Piece)	0.043 kg
Approval and Application	
Energy Efficiency Class	F
Energy Saving Product	Yes
Approval Marks	RoHS compliance CE marking KEMA Keur certificate

Energy Consumption kWh/1000 h	5 kWh
EPREL Registration Number	1820625
CE mark	Yes
EU RoHS compliant	Yes
Flickering value (PstLM) - Flickering value as per EN 61000-3-3	1
Stroboscopic effect visibility measure (SVM)	0.4
Ambient temperature range	-20 to +45 °C

Application Conditions	
Wireless Technology	Not applicable

Product Data	
Order product name	CorePro LED PLS 5W 830 2P G23
Full product name	CorePro LED PLS 5W 830 2P G23
Full product code	872016928658000
Order code	929003756802
Material Nr. (12NC)	929003756802
Numerator - Quantity Per Pack	1
EAN/UPC - Product/Case	8720169286580
Numerator - Packs per outer box	20
EAN/UPC - Case	8720169286597

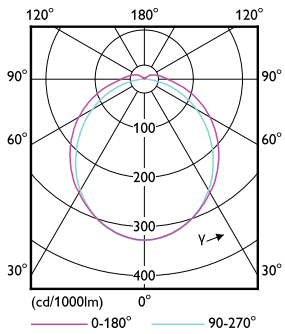
Dimensional drawing



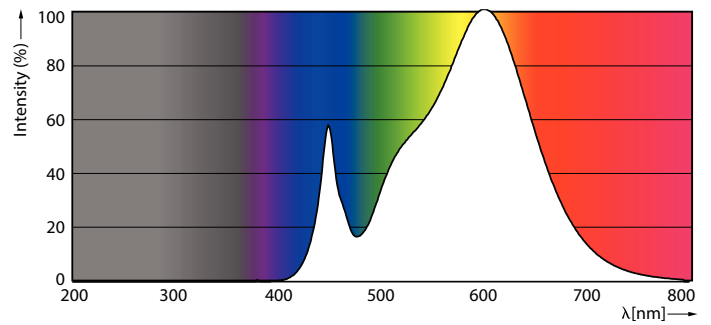
Product	D1	D	A1	A2	A3
CorePro LED PLS 5W 830 2P G23	16 mm	31 mm	108 mm	144 mm	166 mm

CorePro LED PLS

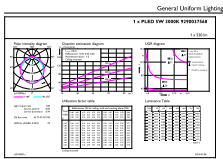
Photometric data



Light Distribution Diagram - CorePro LED PLS 5W 830 2P G23



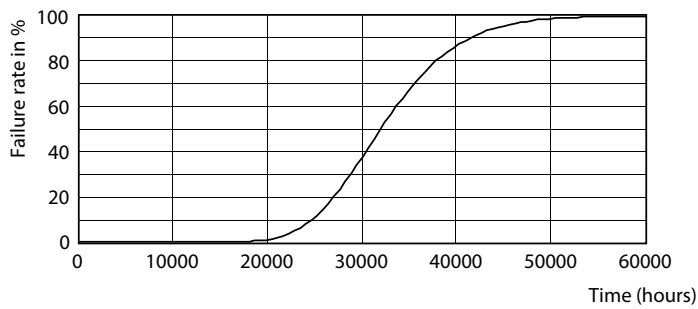
Spectral Power Distribution Colour - CorePro LED PLS 5W 830 2P G23



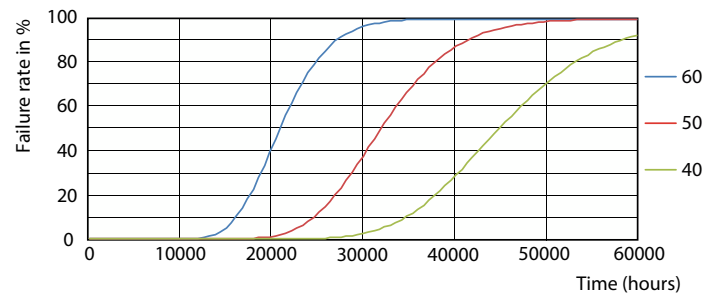
© 2024 Philips Lighting B.V. Page 11

General uniform lighting - CorePro LED PLS 5W 830 2P G23

Lifetime



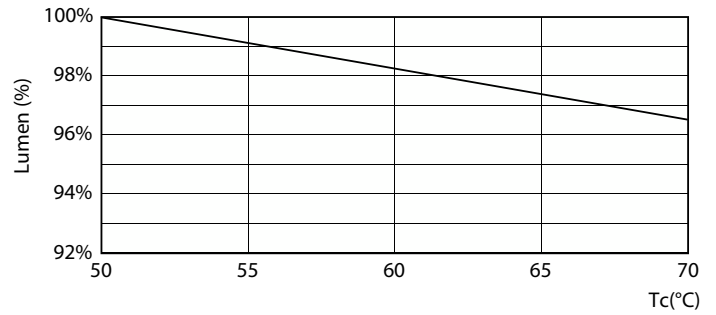
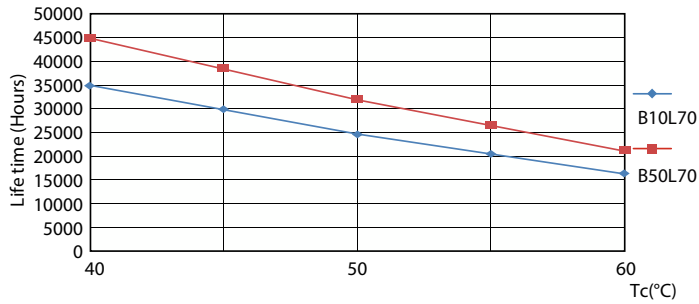
Life Expectancy Diagram



FailureRate

CorePro LED PLS

Lifetime



LifetimeVsTc

Lumen Maintenance Diagram - CorePro LED PLS 5W 830 2P G23



Lumen Maintenance Diagram - CorePro LED PLS 5W 830 2P G23

