



# CorePro LED PLS



## CorePro LED PLS 3.5W 840 2P G23

CorePro, LED, PL-S, EM/Mains, 115 mm, 3.5 W, 7W PL-S, 4000 K, 390 lm, CRI 82, 30000 h

The Philips CorePro LED PLS integrates a LED light source into a traditional fluorescent form factor. This product is the ideal solution for uplampping in general lighting applications: it meets basic lighting requirements, offers significant energy savings and is environmentally friendly.

### Product data

General Information	
Cap base	G23
Nominal lifetime	30,000 h
Switching Cycle	50,000
Lighting Technology	LED
Flux measurement reference	Sphere
Warranty period	3 years
Light Technical	
Colour Code	840 [CCT of 4000K]
Beam angle (nom.)	120 degree(s)
Luminous Flux	390 lm
Colour designation	Cool White (CW)
Correlated Colour Temperature (Nom)	4000 K
Luminous efficacy (rated) (nom.)	111 lm/W
Colour consistency	<6
Colour rendering index (CRI)	82
LLMF at end of nominal lifetime (nom.)	70 %

Photobiological safety according to EN 62471	RG0
Operating and Electrical	
Input frequency	50 to 60 Hz
Power Consumption	3.5 W
Lamp current (nom.)	22 mA
Starting time (nom.)	0.5 s
Warm-up time to 60% light	0.5 s
Power Factor (Fraction)	0.9
Voltage (nom.)	220-240 V
LED alternative to fluorescent lamp power	7W PL-S
Inrush current at mains	6.6
Max. lamp no. on MCB B type 10A – Mains	116
Max. lamp no. on MCB B type 10A – EM ballast without Compensation Capacitor.	500
Max. lamp no. on MCB B type 10A – EM ballast with Compensation Capacitor.	-
Max. lamp no. on MCB B type 16A – Mains	186

# CorePro LED PLS

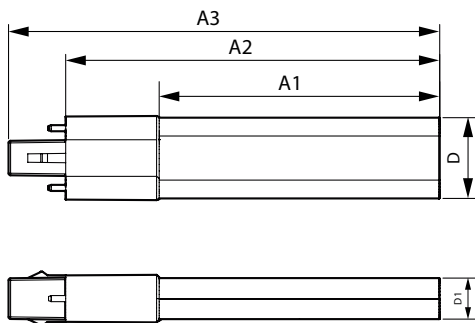
Max. lamp no. on MCB B type 16A – EM ballast without Compensation Capacitor.	801
Max. lamp no. on MCB B type 16A – EM ballast with Compensation Capacitor.	-
Ballast Compatibility	EM/Mains
<b>Temperature</b>	
T-Case maximum (nom.)	45 °C
<b>Controls and Dimming</b>	
Dimmable	No
<b>Mechanical and Housing</b>	
Lamp Finish	Frosted
Bulb material	Plastic
Product length	115 mm
Bulb shape	PL-S
Net Weight (Piece)	0.038 kg
<b>Approval and Application</b>	
Energy Efficiency Class	E
Energy-saving product	Yes

Approval marks	RoHS compliance CE marking KEMA Keur certificate
Energy consumption kWh/1,000 hours	4 kWh
EPREL Registration Number	1820626
CE mark	Yes
EU RoHS compliant	Yes
Flickering value (PstLM)	1
Stroboscopic effect	0.4
Ambient temperature range	-20 to +45 °C

## Product Data

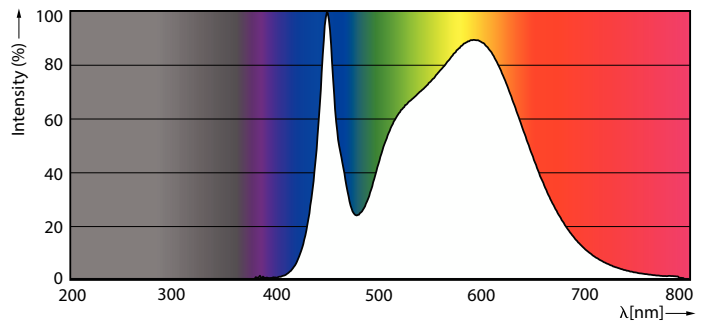
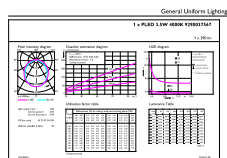
Order product name	CorePro LED PLS 3.5W 840 2P G23
Full product name	CorePro LED PLS 3.5W 840 2P G23
Full EOC	872016928656600
Order code	929003756702
Material no. (12 NC)	929003756702
Numerator – quantity per pack	1
EAN/UPC – Product/Case	8720169286566
Numerator – packs per outer box	20
EAN/UPC - Case	8720169286573

## Dimensional drawing



Product	D1	D	A1	A2	A3
CorePro LED PLS 3.5W 840 2P G23	16 mm	31 mm	79 mm	115 mm	137 mm

## Photometric data

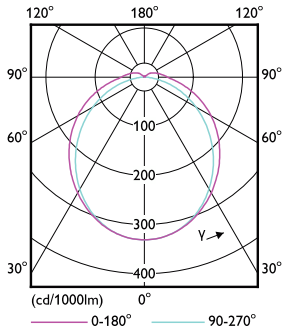


General uniform lighting - CorePro LED PLS 3.5W 840 2P G23

Spectral Power Distribution Colour - CorePro LED PLS 3.5W 840 2P G23

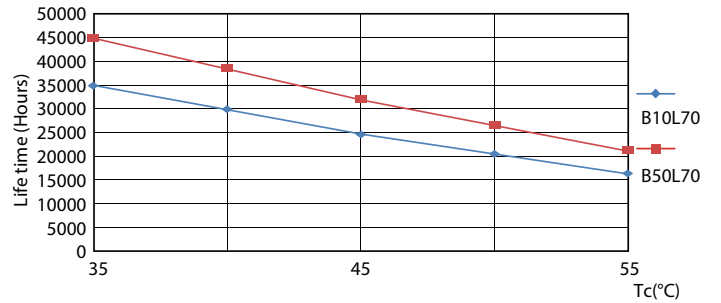
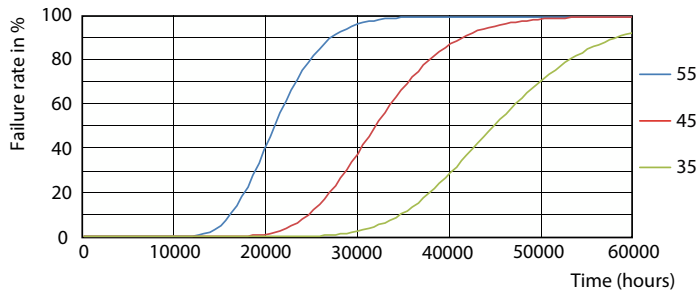
# CorePro LED PLS

## Photometric data

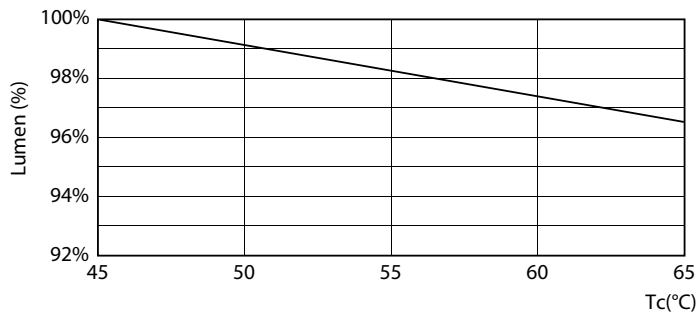


Light Distribution Diagram - CorePro LED PLS 3.5W 840 2P G23

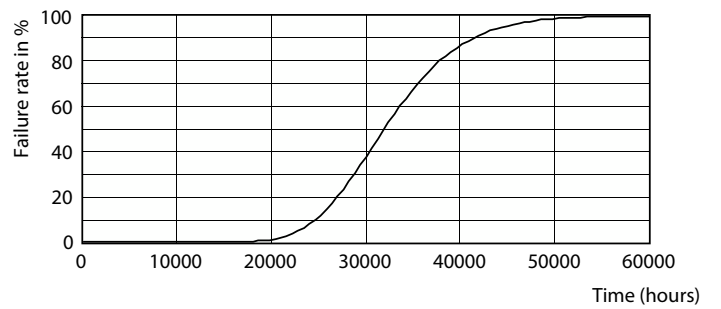
## Lifetime



FailureRate



LifetimeVsTc

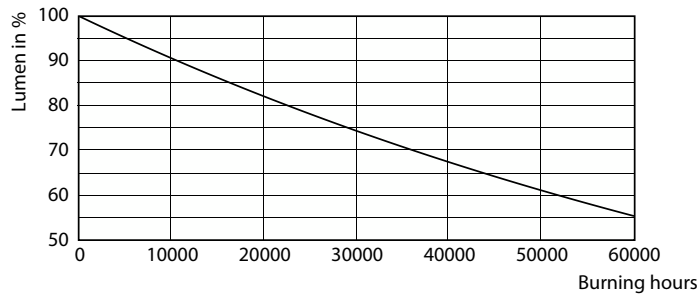


Lumen Maintenance Diagram - CorePro LED PLS 3.5W 840 2P G23

Life Expectancy Diagram

# CorePro LED PLS

## Lifetime



Lumen Maintenance Diagram - CorePro LED PLS 3.5W 840 2P G23

