



MASTER LED tube Mains T5



MAS LEDtube 600mm HO 10.5W 865 T5

MASTER, LEDtube, T5, Mains, 600 mm, 10.5 W, 24W TL5 HO, 6500 K, 1600 lm, CRI 80, 60000 hour(s)

The new Philips Master LEDtube Mains T5 brings simplicity to your lighting project. You don't need to pay attention to the driver technology anymore. Thanks to a unique design, Philips MASTER LEDtube Mains T5 installs in luminaires operating on mains power connection. So simple to operate! . Perfectly safe, reliable & easy to install Philips MASTER LEDtube Mains T5 is the ideal alternative to standard fluorescent tubes to maximize value over lifetime with high energy saving and lower maintenance costs.

Product data

General Information	
Cap-Base	G5
Nominal lifetime	60,000 hour(s)
Switching Cycle	200,000
Lighting Technology	LEDtube
Flux measurement reference	Sphere
Warranty period	5 years
Light Technical	
Color Code	865 [CCT of 6500K]
Beam Angle (Nom)	200 degree(s)
Luminous Flux	1,600 lm
Color Designation	Cool Daylight
Correlated Color Temperature (Nom)	6500 K

Luminous Efficacy (rated) (Nom)	152 lm/W
Color Consistency	<6
Color rendering index (CRI)	80
LLMF At End Of Nominal Lifetime (Nom)	70 %
Photobiological safety according to EN 62471	RG0
Operating and Electrical	
Input Frequency	50 to 60 Hz
Power Consumption	10.5 W
Lamp Current (Max)	47 mA
Lamp Current (Min)	47 mA
Lamp Current (Nom)	47 mA
Starting Time (Nom)	0.5 s
Warm-up time to 60% light	0.5 s

MASTER LED tube Mains T5

Power Factor (Fraction)	0.92
Voltage (Nom)	220-240 V
LED alternative to fluorescent lamp power	24W TL5 HO
Inrush current at mains	7
Max. lamp no. on MCB B type 10A – Mains	100
Max. lamp no. on MCB B type 10A – EM ballast without Compensation Capacitor.	-
Max. lamp no. on MCB B type 10A – EM ballast with Compensation Capacitor.	-
Max. lamp no. on MCB B type 16A – Mains	159
Max. lamp no. on MCB B type 16A – EM ballast without Compensation Capacitor.	-
Max. lamp no. on MCB B type 16A – EM ballast with Compensation Capacitor.	-
Ballast Compatibility	Mains

Temperature

T-Case Maximum (Nom)	60 °C
----------------------	-------

Controls and Dimming

Dimmable	No
----------	----

Mechanical and Housing

Bulb Finish	Frosted
Bulb Material	Glass
Product Length	600 mm
Bulb Shape	T5
Net Weight (Piece)	0.080 kg

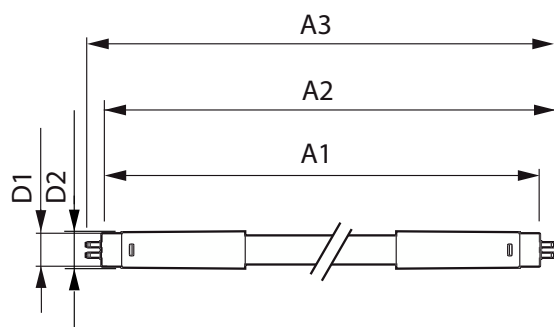
Approval and Application

Energy Efficiency Class	D
Energy Saving Product	Yes
Approval Marks	RoHS compliance
Energy Consumption kWh/1000 h	11 kWh
EPREL Registration Number	1590873
CE mark	Yes
EU RoHS compliant	Yes
Flickering value (PstLM) - Flickering value as per EN 61000-3-3	1
Stroboscopic effect visibility measure (SVM)	0.4
Ambient temperature range	-20 to +45 °C

Product Data

Order product name	MAS LEDtube 600mm HO 10.5W 865 T5
Full product name	MAS LEDtube 600mm HO 10.5W 865 T5
Full product code	872016927523200
Order code	929003734502
Material Nr. (12NC)	929003734502
Numerator - Quantity Per Pack	1
EAN/UPC - Product/Case	8720169275232
Numerator - Packs per outer box	10
EAN/UPC - Case	8720169275249

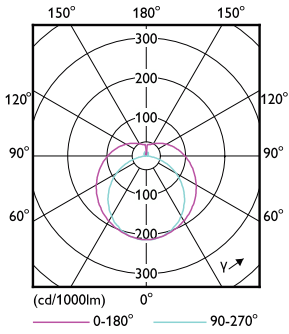
Dimensional drawing



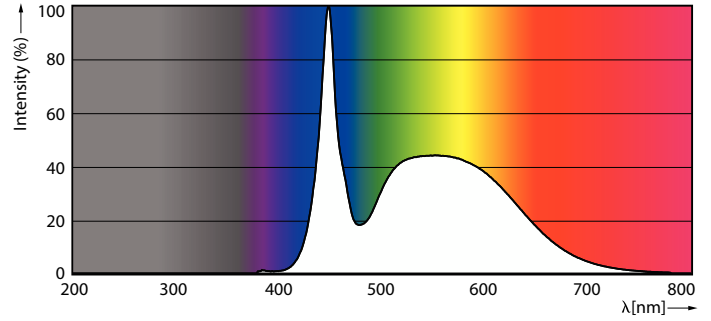
Product	D1	D2	A1	A2	A3
MAS LEDtube 600mm HO 10.5W 865 T5	19 mm	549 mm	556.1 mm	563.2 mm	

MASTER LED tube Mains T5

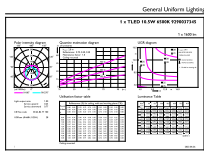
Photometric data



Light Distribution Diagram - MAS LEDtube 600mm HO 10.5W 865 T5



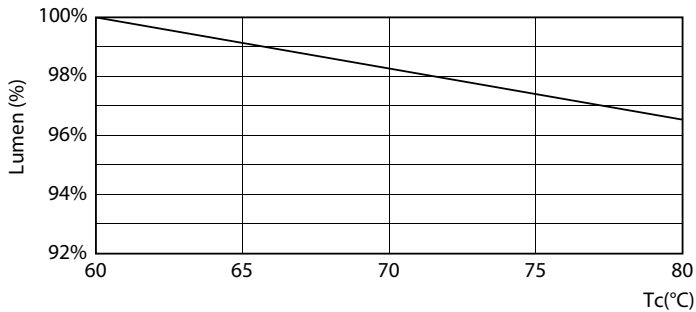
Spectral Power Distribution Colour - MAS LEDtube 600mm HO 10.5W 865 T5



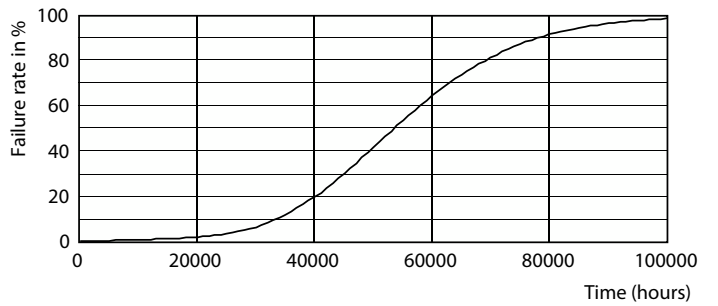
General Uniform Lighting - MAS LEDtube 600mm HO 10.5W 865 T5

General uniform lighting - MAS LEDtube 600mm HO 10.5W 865 T5

Lifetime



Lumen Maintenance Diagram - MAS LEDtube 600mm HO 10.5W 865 T5



Life Expectancy Diagram

MASTER LED tube Mains T5

Lifetime



LifetimeVsTc

FailureRate



Lumen Maintenance Diagram - MAS LEDtube 600mm HO 10.5W 865 T5

