



MASTER LED tube Mains T5

MAS LEDtube 600mm HO 10.5W 830 T5

MASTER, LEDtube, T5, Mains, 600 mm, 10.5 W, 24W TL5 HO, 3000 K, 1500 lm, CRI 80, 60000 hour(s)

MASTER, LEDtube, T5, Mains, 600 mm, 10.5 W, LED alternative to 24W TL5 HO, 3000 K, 1500 lm, CRI 80, 60000 hour(s), 142 lm/W, EEL D, G5, Beam angle 200 degree(s), Glass, 600 mm, RGO, SDCM 6, PF 0.92, IP20, SVM 0.4, PstLM 1

Product data

| General Information | | Photobiological safety according to EN 62471 | |
|---------------------------------------|--------------------|--|-------------|
| Cap-Base | G5 | | RGO |
| Nominal lifetime | 60,000 hour(s) | Operating and Electrical | |
| Switching Cycle | 200,000 | Input Frequency | 50 to 60 Hz |
| Lighting Technology | LEDtube | Power Consumption | 10.5 W |
| Flux measurement reference | Sphere | Lamp Current (Max) | 47 mA |
| Warranty period | 5 years | Lamp Current (Min) | 47 mA |
| | | Lamp Current (Nom) | 47 mA |
| | | Starting Time (Nom) | 0.5 s |
| | | Warm-up time to 60% light | 0.5 s |
| | | Power Factor (Fraction) | 0.92 |
| | | Voltage (Nom) | 220-240 V |
| | | LED alternative to fluorescent lamp power | 24W TL5 HO |
| | | Inrush current at mains | 7 |
| | | Max. lamp no. on MCB B type 10A - Mains | 100 |
| | | Max. lamp no. on MCB B type 10A – EM ballast without Compensation Capacitor. | - |
| Light Technical | | | |
| Color Code | 830 [CCT of 3000K] | | |
| Beam Angle (Nom) | 200 degree(s) | | |
| Luminous Flux | 1,500 lm | | |
| Color Designation | White (WH) | | |
| Correlated Color Temperature (Nom) | 3000 K | | |
| Luminous Efficacy (rated) (Nom) | 142 lm/W | | |
| Color Consistency | <6 | | |
| Color rendering index (CRI) | 80 | | |
| LLMF At End Of Nominal Lifetime (Nom) | 70 % | | |

MASTER LED tube Mains T5

| | |
|--|-------|
| Max. lamp no. on MCB B type 10A – EM ballast with Compensation Capacitor. | - |
| Max. lamp no. on MCB B type 16A – Mains | 159 |
| Max. lamp no. on MCB B type 16A – EM ballast without Compensation Capacitor. | - |
| Max. lamp no. on MCB B type 16A – EM ballast with Compensation Capacitor. | - |
| Ballast Compatibility | Mains |

Temperature

| | |
|----------------------|-------|
| T-Case Maximum (Nom) | 60 °C |
|----------------------|-------|

Controls and Dimming

| | |
|----------|----|
| Dimmable | No |
|----------|----|

Mechanical and Housing

| | |
|--------------------|----------|
| Bulb Finish | Frosted |
| Bulb Material | Glass |
| Product Length | 600 mm |
| Bulb Shape | T5 |
| Net Weight (Piece) | 0.080 kg |

Approval and Application

| | |
|-------------------------|-----------------|
| Energy Efficiency Class | D |
| Energy Saving Product | Yes |
| Approval Marks | RoHS compliance |

| | |
|---|---------------|
| Energy Consumption kWh/1000 h | 11 kWh |
| EPREL Registration Number | 1590874 |
| CE mark | Yes |
| EU RoHS compliant | Yes |
| Flickering value (PstLM) - Flickering value as per EN 61000-3-3 | 1 |
| Stroboscopic effect visibility measure (SVM) | 0.4 |
| Ambient temperature range | -20 to +45 °C |

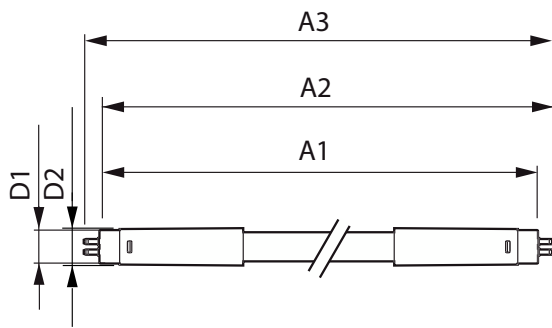
Application Conditions

| | |
|---------------------|----------------|
| Wireless Technology | Not applicable |
|---------------------|----------------|

Product Data

| | |
|---------------------------------|-----------------------------------|
| Order product name | MAS LEDtube 600mm HO 10.5W 830 T5 |
| Full product name | MAS LEDtube 600mm HO 10.5W 830 T5 |
| Full product code | 872016927521800 |
| Order code | 929003734302 |
| Material Nr. (12NC) | 929003734302 |
| Numerator - Quantity Per Pack | 1 |
| EAN/UPC - Product/Case | 8720169275218 |
| Numerator - Packs per outer box | 10 |
| EAN/UPC - Case | 8720169275225 |

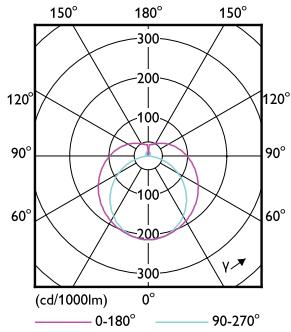
Dimensional drawing



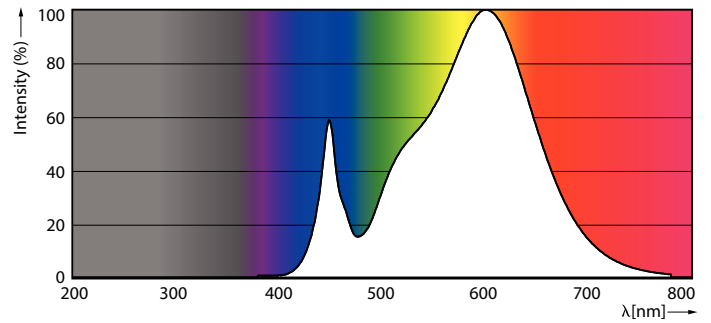
| Product | D1 | D2 | A1 | A2 | A3 |
|-----------------------------------|-------|-------|--------|----------|----------|
| MAS LEDtube 600mm HO 10.5W 830 T5 | 19 mm | 19 mm | 549 mm | 556.1 mm | 563.2 mm |

MASTER LED tube Mains T5

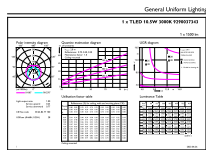
Photometric data



Light Distribution Diagram - MAS LEDtube 600mm HO 10.5W 830 T5



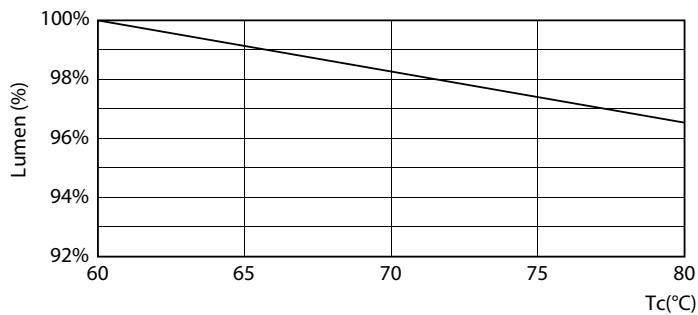
Spectral Power Distribution Colour - MAS LEDtube 600mm HO 10.5W 830 T5



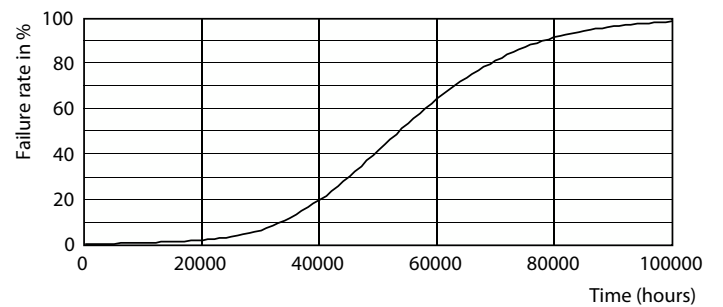
General Uniform Lighting - MAS LEDtube 600mm HO 10.5W 830 T5

General uniform lighting - MAS LEDtube 600mm HO 10.5W 830 T5

Lifetime



Lumen Maintenance Diagram - MAS LEDtube 600mm HO 10.5W 830 T5



Life Expectancy Diagram

MASTER LED tube Mains T5

Lifetime



LifetimeVsTc

FailureRate



Lumen Maintenance Diagram - MAS LEDtube 600mm HO 10.5W 830 T5

