



# MASTER LED tube Mains T5



## MAS LEDtube 600mm HO 10.5W 830 T5

MASTER, LEDtube, T5, Mains, 600 mm, 10.5 W, 24W TL5 HO, 3000 K, 1500 lm, CRI 80, 60000 hour(s)

The new Philips Master LEDtube Mains T5 brings simplicity to your lighting project. You don't need to pay attention to the driver technology anymore. Thanks to a unique design, Philips MASTER LEDtube Mains T5 installs in luminaires operating on mains power connection. So simple to operate! . Perfectly safe, reliable & easy to install Philips MASTER LEDtube Mains T5 is the ideal alternative to standard fluorescent tubes to maximize value over lifetime with high energy saving and lower maintenance costs.

### Product data

General Information	
Cap-Base	G5
Nominal lifetime	60,000 hour(s)
Switching Cycle	200,000
Lighting Technology	LEDtube
Flux measurement reference	Sphere
Warranty period	5 years
Light Technical	
Color Code	830 [CCT of 3000K]
Beam Angle (Nom)	200 degree(s)
Luminous Flux	1,500 lm
Color Designation	White (WH)
Correlated Color Temperature (Nom)	3000 K

Luminous Efficacy (rated) (Nom)	142 lm/W
Color Consistency	<6
Color rendering index (CRI)	80
LLMF At End Of Nominal Lifetime (Nom)	70 %
Photobiological safety according to EN 62471	RG0
Operating and Electrical	
Input Frequency	50 to 60 Hz
Power Consumption	10.5 W
Lamp Current (Max)	47 mA
Lamp Current (Min)	47 mA
Lamp Current (Nom)	47 mA
Starting Time (Nom)	0.5 s
Warm-up time to 60% light	0.5 s

# MASTER LED tube Mains T5

Power Factor (Fraction)	0.92
Voltage (Nom)	220-240 V
LED alternative to fluorescent lamp power	24W TL5 HO
Inrush current at mains	7
Max. lamp no. on MCB B type 10A – Mains	100
Max. lamp no. on MCB B type 10A – EM ballast without Compensation Capacitor.	-
Max. lamp no. on MCB B type 10A – EM ballast with Compensation Capacitor.	-
Max. lamp no. on MCB B type 16A – Mains	159
Max. lamp no. on MCB B type 16A – EM ballast without Compensation Capacitor.	-
Max. lamp no. on MCB B type 16A – EM ballast with Compensation Capacitor.	-
Ballast Compatibility	Mains

## Temperature

T-Case Maximum (Nom)	60 °C
----------------------	-------

## Controls and Dimming

Dimmable	No
----------	----

## Mechanical and Housing

Bulb Finish	Frosted
Bulb Material	Glass
Product Length	600 mm
Bulb Shape	T5
Net Weight (Piece)	0.080 kg

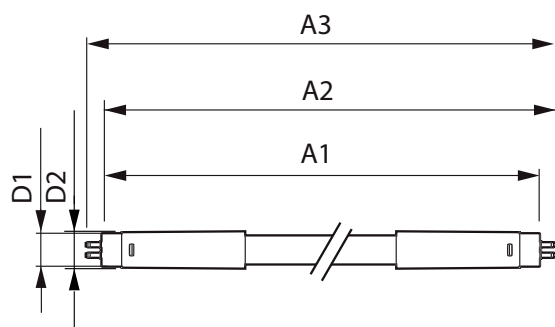
## Approval and Application

Energy Efficiency Class	D
Energy Saving Product	Yes
Approval Marks	RoHS compliance
Energy Consumption kWh/1000 h	11 kWh
EPREL Registration Number	1590874
CE mark	Yes
EU RoHS compliant	Yes
Flickering value (PstLM) - Flickering value as per EN 61000-3-3	1
Stroboscopic effect visibility measure (SVM)	0.4
Ambient temperature range	-20 to +45 °C

## Product Data

Order product name	MAS LEDtube 600mm HO 10.5W 830 T5
Full product name	MAS LEDtube 600mm HO 10.5W 830 T5
Full product code	872016927521800
Order code	929003734302
Material Nr. (12NC)	929003734302
Numerator - Quantity Per Pack	1
EAN/UPC - Product/Case	8720169275218
Numerator - Packs per outer box	10
EAN/UPC - Case	8720169275225

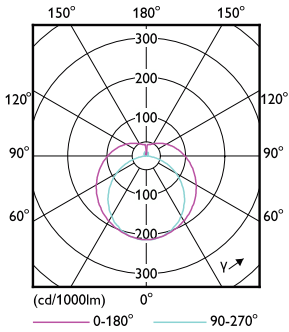
## Dimensional drawing



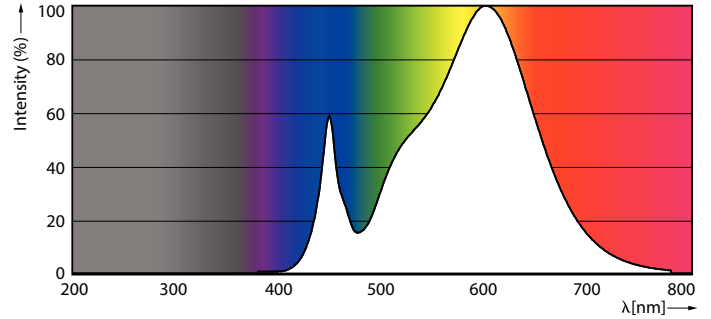
Product	D1	D2	A1	A2	A3
MAS LEDtube 600mm HO 10.5W 830 T5	19 mm	549 mm	556.1 mm	563.2 mm	

# MASTER LED tube Mains T5

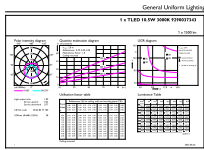
## Photometric data



Light Distribution Diagram - MAS LEDtube 600mm HO 10.5W 830 T5



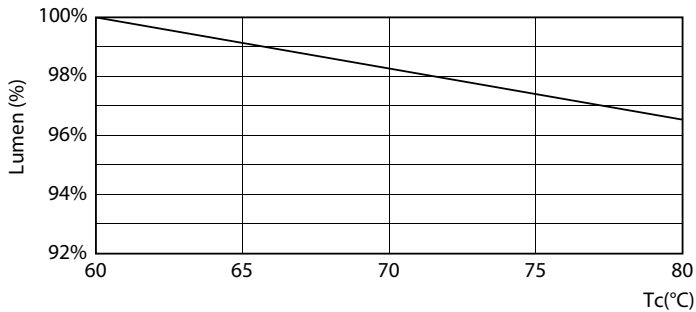
Spectral Power Distribution Colour - MAS LEDtube 600mm HO 10.5W 830 T5



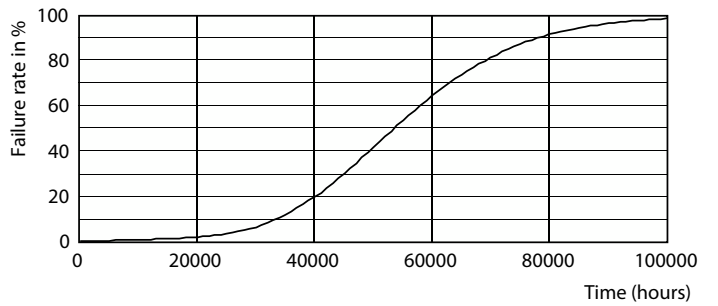
General Uniform Lighting - MAS LEDtube 600mm HO 10.5W 830 T5

General uniform lighting - MAS LEDtube 600mm HO 10.5W 830 T5

## Lifetime



Lumen Maintenance Diagram - MAS LEDtube 600mm HO 10.5W 830 T5



Life Expectancy Diagram

# MASTER LED tube Mains T5

## Lifetime



LifetimeVsTc

FailureRate



Lumen Maintenance Diagram - MAS LEDtube 600mm HO 10.5W 830 T5

