



MASTER LED tube Mains T5

MAS LEDtube 900mm HE 11.5W 840 T5 EU

MASTER, LED, T5, Mains, 900 mm, 11.5 W, 21W TL5 HE, 4000 K, 1700 lm, CRI 80, 60000 hour(s)

The new Philips Master LEDtube Mains T5 brings simplicity to your lighting project. You don't need to pay attention to the driver technology anymore. Thanks to a unique design, Philips MASTER LEDtube Mains T5 installs in luminaires operating on mains power connection. So simple to operate! . Perfectly safe, reliable & easy to install Philips MASTER LEDtube Mains T5 is the ideal alternative to standard fluorescent tubes to maximize value over lifetime with high energy saving and lower maintenance costs.

Product data

General Information		Luminous Efficacy (rated) (Nom)		147 lm/W
Cap-Base	G5	Color Consistency	<6	
Nominal lifetime	60,000 hour(s)	Color rendering index (CRI)	80	
Switching Cycle	200,000	LLMF At End Of Nominal Lifetime (Nom)	70 %	
Lighting Technology	LED	Photobiological safety according to EN 62471	RG0	
Flux measurement reference	Sphere			
Warranty period	5 years			
Light Technical		Operating and Electrical		
Color Code	840 [CCT of 4000K]	Line Frequency	50 to 60 Hz	
Beam Angle (Nom)	200 degree(s)	Input Frequency	50 to 60 Hz	
Luminous Flux	1,700 lm	Power Consumption	11.5 W	
Color Designation	Cool White (CW)	Lamp Current (Max)	57 mA	
Correlated Color Temperature (Nom)	4000 K	Lamp Current (Min)	57 mA	
		Starting Time (Nom)	0.5 s	
		Warm-up time to 60% light	0.5 s	

MASTER LED tube Mains T5

Power Factor (Fraction)	0.9
Voltage (Nom)	220-240 V
LED alternative to fluorescent lamp power	21W TL5 HE
Inrush current at mains	7
Max. lamp no. on MCB B type 10A – Mains	110
Max. lamp no. on MCB B type 10A – EM ballast without Compensation Capacitor.	-
Max. lamp no. on MCB B type 10A – EM ballast with Compensation Capacitor.	-
Max. lamp no. on MCB B type 16A – Mains	175
Max. lamp no. on MCB B type 16A – EM ballast without Compensation Capacitor.	-
Max. lamp no. on MCB B type 16A – EM ballast with Compensation Capacitor.	-
Ballast Compatibility	Mains

Temperature

T-Case Maximum (Nom)	45 °C
----------------------	-------

Controls and Dimming

Dimmable	No
----------	----

Mechanical and Housing

Bulb Finish	Frosted
Bulb Material	Glass
Product Length	900 mm
Bulb Shape	T5
Net Weight (Piece)	0.112 kg

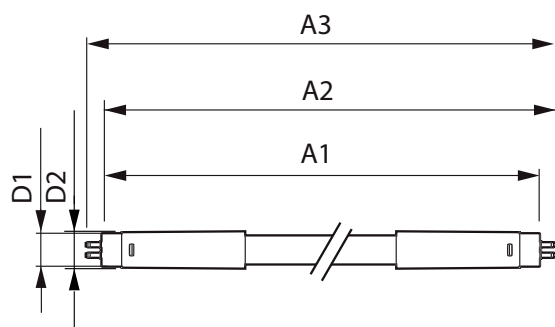
Approval and Application

Energy Efficiency Class	D
Energy Saving Product	Yes
Approval Marks	RoHS compliance
Energy Consumption kWh/1000 h	12 kWh
EPREL Registration Number	1587456
CE mark	Yes
EU RoHS compliant	Yes
Flickering value (PstLM) - Flickering value as per EN 61000-3-3	1
Stroboscopic effect visibility measure (SVM)	0.4
Ambient temperature range	-20 to +45 °C

Product Data

Order product name	MAS LEDtube 900mm HE 11.5W 840 T5 EU
Full product name	MAS LEDtube 900mm HE 11.5W 840 T5 EU
Full product code	872016927064000
Order code	929003734102
Material Nr. (12NC)	929003734102
Numerator - Quantity Per Pack	1
EAN/UPC - Product/Case	8720169270640
Numerator - Packs per outer box	10
EAN/UPC - Case	8720169270657

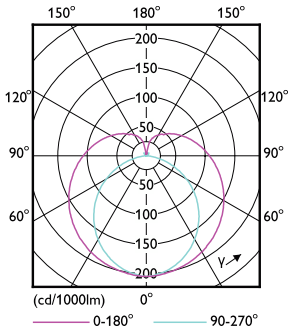
Dimensional drawing



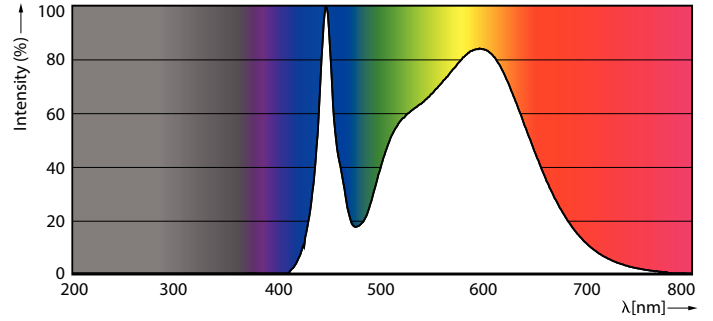
Product	D1	D2	A1	A2	A3
MAS LEDtube 900mm HE 11.5W 840 T5 EU	15.7 mm	19 mm	849 mm	856.1 mm	863.2 mm

MASTER LED tube Mains T5

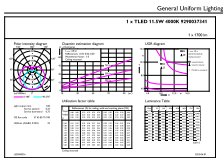
Photometric data



Light Distribution Diagram - MAS LEDtube 900mm HE 11.5W 840 T5 EU



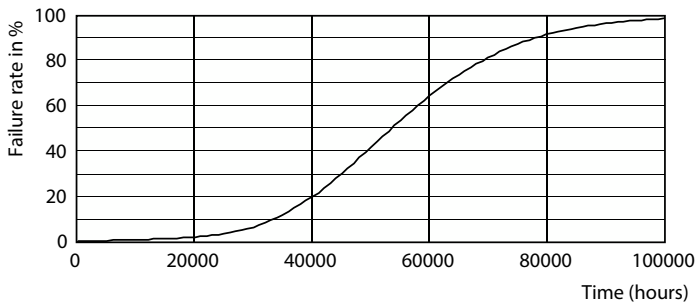
Spectral Power Distribution Colour - MAS LEDtube 900mm HE 11.5W 840 T5 EU



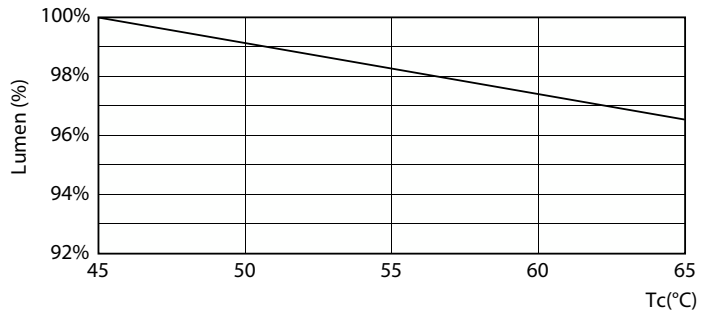
Technical Parameters EU Page Lighting EU Page 1/1

General uniform lighting - MAS LEDtube 900mm HE 11.5W 840 T5 EU

Lifetime



Life Expectancy Diagram



Lumen Maintenance Diagram - MAS LEDtube 900mm HE 11.5W 840 T5 EU

MASTER LED tube Mains T5

Lifetime



FailureRate

LifetimeVsTc



Lumen Maintenance Diagram - MAS LEDtube 900mm HE 11.5W 840 T5 EU

