



# MASTER LED tube T8 UltraEfficient with Recycled Plastic

## MAS LEDtube 1200mm UE 11.9W 865 T8 EELA

LEDtube, T8, 1200 mm, 11.9 W, 6500 K, 2500 lm, 100000 hour(s)

With energy prices rising and the EU's Green Deal continuing to fund energy efficient building renovations, many are looking into make their company's lighting more sustainable. The new Philips MASTER LEDtube UltraEfficient T8 is a true breakthrough on the way to more sustainable lighting. It replaces your current fluorescent tube or LED tube directly and offers immediately great energy cost reduction as well as a much longer lifetime!

### Product data

General Information		Color Consistency	
Cap-Base	G13 Rotatable end-cap	Color rendering index (CRI)	80
Nominal lifetime	100,000 hour(s)	LLMF At End Of Nominal Lifetime (Nom)	70 %
Switching Cycle	200,000	Photobiological safety according to EN 62471	RG0
Lighting Technology	LEDtube	Operating and Electrical	
Light Technical		Input Frequency	50 to 60 Hz
Color Code	865 [CCT of 6500K]	Power Consumption	11.9 W
Beam Angle (Nom)	160 degree(s)	Lamp Current (Max)	63 mA
Luminous Flux	2,500 lm	Lamp Current (Min)	48 mA
Color Designation	Cool Daylight	Wattage Equivalent	36 W
Correlated Color Temperature (Nom)	6500 K	Starting Time (Nom)	0.5 s
Luminous Efficacy (rated) (Nom)	210 lm/W	Warm-up time to 60% light	0.5 s

# MASTER LED tube T8 UltraEfficient with Recycled Plastic

Power Factor (Fraction)	0.9
Voltage (Nom)	220-240 V

## Temperature

T-Case Maximum (Nom)	40 °C
----------------------	-------

## Controls and Dimming

Dimmable	No
----------	----

## Mechanical and Housing

Bulb Finish	Frosted
Bulb Material	Plastic
Product Length	1,200 mm
Bulb Shape	T8
Net Weight (Piece)	0.230 kg

## Approval and Application

Energy Saving Product	Yes
Approval Marks	RoHS compliance CE marking KEMA Keur certificate ENEC certificate
CE mark	Yes
EU RoHS compliant	Yes
LED Innovations	UltraEfficient

Ambient temperature range	-20 to +45 °C
Post-consumer recycled plastic material ratio	40 %

## Application Conditions

Wireless Technology	Not applicable
---------------------	----------------

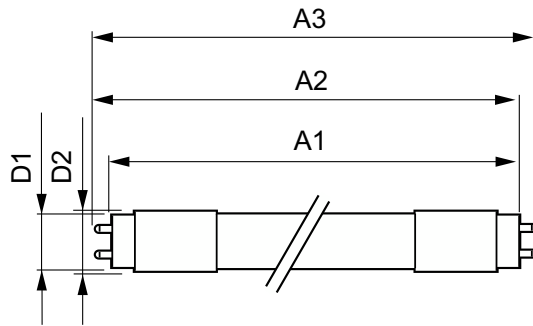
## Sustainability Data

Product non-virgin material ratio	25.3 %
-----------------------------------	--------

## Product Data

Order product name	MAS LEDtube 1200mm UE 11.9W 865 T8 EELA
Full product name	MAS LEDtube 1200mm UE 11.9W 865 T8 EELA
Full product code	694197064871400
Order code	929003731810
Material Nr. (12NC)	929003731810
Numerator - Quantity Per Pack	1
EAN/UPC - Product/Case	6941970648714
Numerator - Packs per outer box	10
EAN/UPC - Case	6941970648721

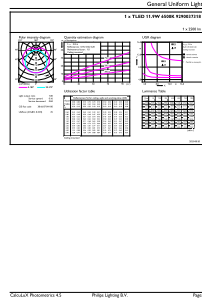
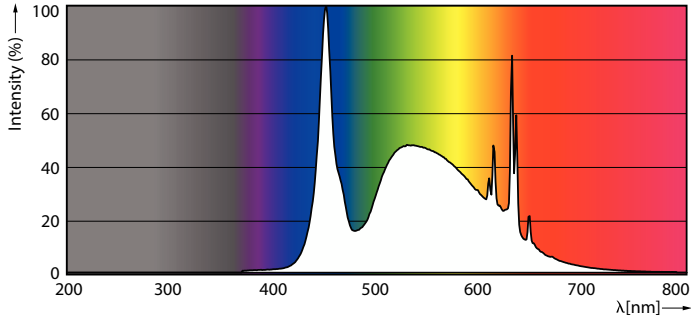
## Dimensional drawing



Product	D1	D2	A1	A2	A3
MAS LEDtube 1200mm UE 11.9W 865 T8 EELA	25.8 mm	28 mm	1,198.2 mm	1,205.3 mm	1,212.4 mm

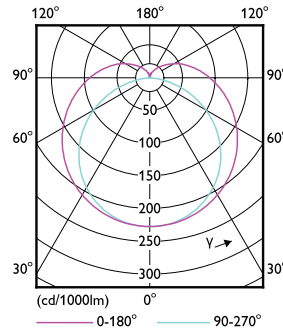
# MASTER LED tube T8 UltraEfficient with Recycled Plastic

## Photometric data



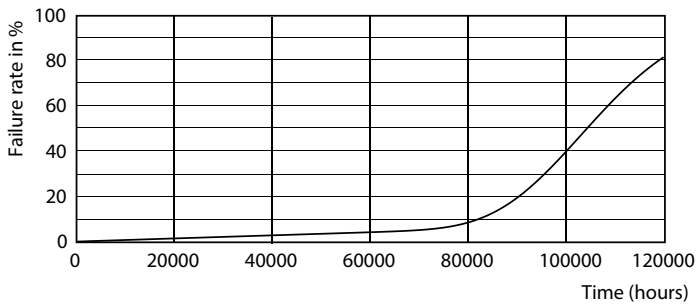
Spectral Power Distribution Colour - MAS LEDtube 1200mm UE 11.9W 865 T8 EELA

General uniform lighting - MAS LEDtube 1200mm UE 11.9W 865 T8 EELA

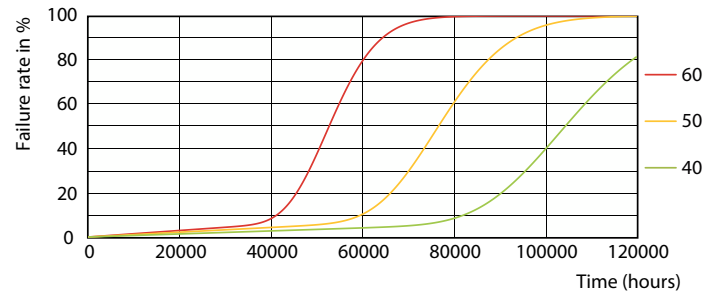


Light Distribution Diagram - MAS LEDtube 1200mm UE 11.9W 865 T8 EELA

## Lifetime



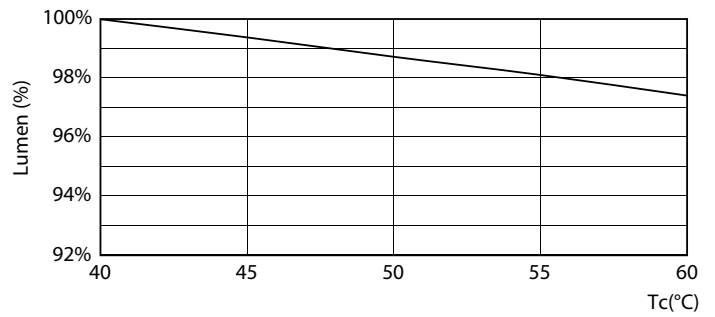
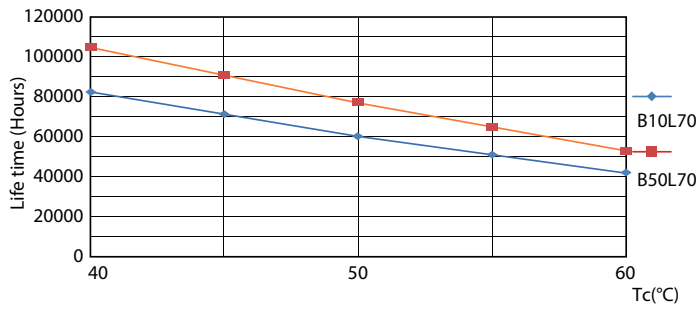
Life Expectancy Diagram



LEDtube\_100K\_4060\_FailureRate-LED

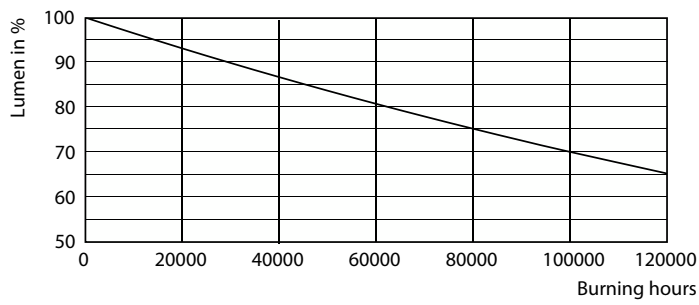
# MASTER LED tube T8 UltraEfficient with Recycled Plastic

## Lifetime



LifetimeVsTc

Lumen Maintenance Diagram - MAS LEDtube 1200mm UE 11.9W 865 T8 EELA



Lumen Maintenance Diagram - MAS LEDtube 1200mm UE 11.9W 865 T8 EELA

