



MASTER LED tube T8 UltraEfficient with Recycled Plastic

MAS LEDtube 1200mm UE 11.9W 865 T8 EELA

MASTER, LEDtube, T8, EM/Mains, 1200 mm, 220-240 V, 11.9 W, 36W TL-D, 6500 K, 2500 lm, 100000 hour(s)

With energy prices rising and the EU's Green Deal continuing to fund energy efficient building renovations, many are looking into make their company's lighting more sustainable. The new Philips MASTER LEDtube UltraEfficient T8 is a true breakthrough on the way to more sustainable lighting. It replaces your current fluorescent tube or LED tube directly and offers immediately great energy cost reduction as well as a much longer lifetime!

Product data

General Information		Operating and Electrical	
Cap-Base	G13 Rotatable end-cap	Luminous Efficacy (rated) (Nom)	210 lm/W
Nominal lifetime	100,000 hour(s)	Color Consistency	<6
Switching Cycle	200,000	Color rendering index (CRI)	80
Lighting Technology	LEDtube	LLMF At End Of Nominal Lifetime (Nom)	70 %
		Photobiological safety according to EN 62471	RGO
Light Technical			
Color Code	865 [CCT of 6500K]	Input Frequency	50 to 60 Hz
Beam Angle (Nom)	160 degree(s)	Power Consumption	11.9 W
Luminous Flux	2,500 lm	Lamp Current (Max)	63 mA
Color Designation	Cool Daylight	Lamp Current (Min)	48 mA
Correlated Color Temperature (Nom)	6500 K	Wattage Equivalent	36 W

MASTER LED tube T8 UltraEfficient with Recycled Plastic

Starting Time (Nom)	0.5 s
Warm-up time to 60% light	0.5 s
Power Factor (Fraction)	0.9
Voltage (Nom)	220-240 V
LED alternative to fluorescent lamp power	36W TL-D
Ballast Compatibility	EM/Mains

Temperature

T-Case Maximum (Nom)	40 °C
----------------------	-------

Controls and Dimming

Dimmable	No
----------	----

Mechanical and Housing

Bulb Finish	Frosted
Bulb Material	Plastic
Product Length	1,200 mm
Bulb Shape	T8
Net Weight (Piece)	0.230 kg

Approval and Application

Energy Saving Product	Yes
Approval Marks	RoHS compliance CE marking KEMA Keur certificate ENEC certificate
CE mark	Yes

EU RoHS compliant	Yes
LED Innovations	UltraEfficient
Ambient temperature range	-20 to +45 °C
Post-consumer recycled plastic material ratio	40 %

Application Conditions

Wireless Technology	Not applicable
---------------------	----------------

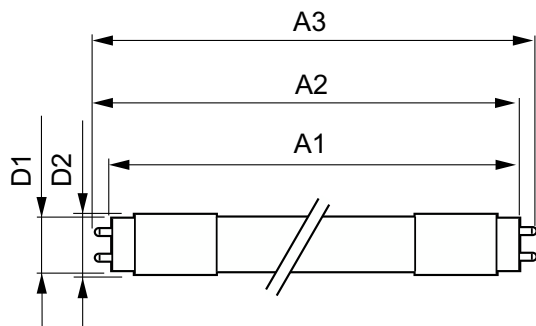
Sustainability Data

Product non-virgin material ratio	26.4 %
-----------------------------------	--------

Product Data

Order product name	MAS LEDtube 1200mm UE 11.9W 865 T8 EELA
Full product name	MAS LEDtube 1200mm UE 11.9W 865 T8 EELA
Full product code	872016928172100
Order code	929003731808
Material Nr. (12NC)	929003731808
Numerator - Quantity Per Pack	1
EAN/UPC - Product/Case	8720169281721
Numerator - Packs per outer box	10
EAN/UPC - Case	8720169281738

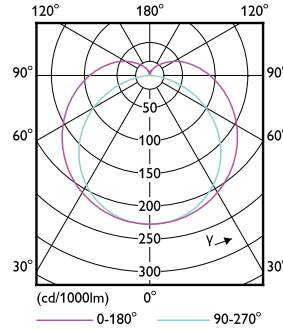
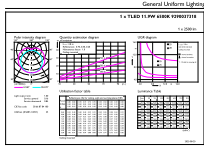
Dimensional drawing



Product	D1	D2	A1	A2	A3
MAS LEDtube 1200mm UE 11.9W 865 T8 EELA	25.8 mm	28 mm	1,198.2 mm	1,205.3 mm	1,212.4 mm

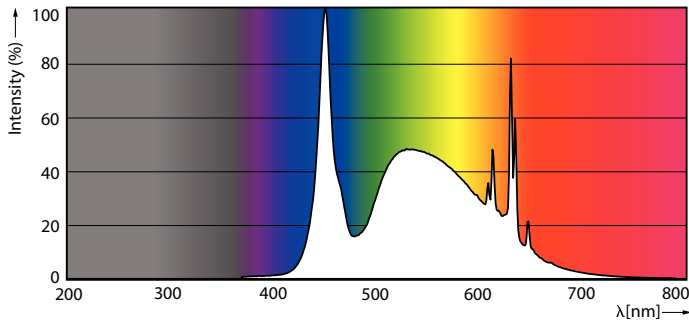
MASTER LED tube T8 UltraEfficient with Recycled Plastic

Photometric data



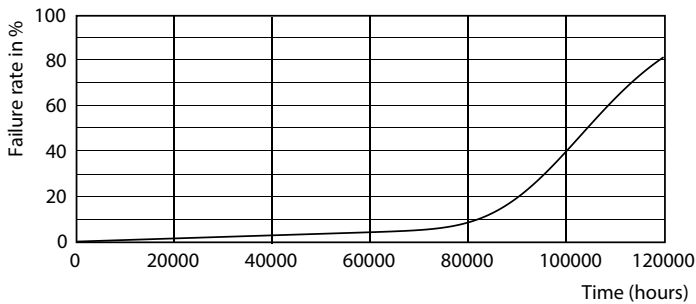
General uniform lighting - MAS LEDtube 1200mm UE 11.9W 865 T8 EELA

Light Distribution Diagram - MAS LEDtube 1200mm UE 11.9W 865 T8 EELA

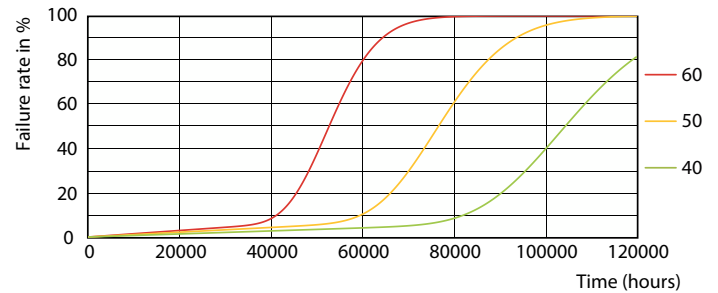


Spectral Power Distribution Colour - MAS LEDtube 1200mm UE 11.9W 865 T8 EELA

Lifetime



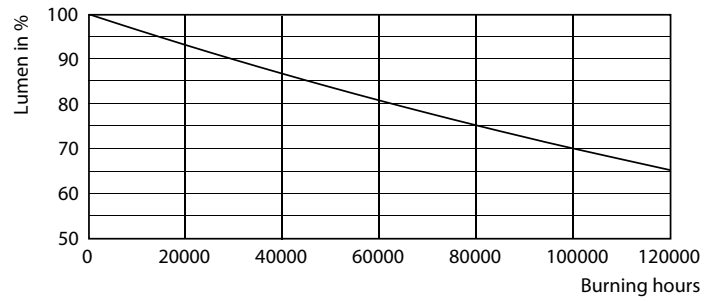
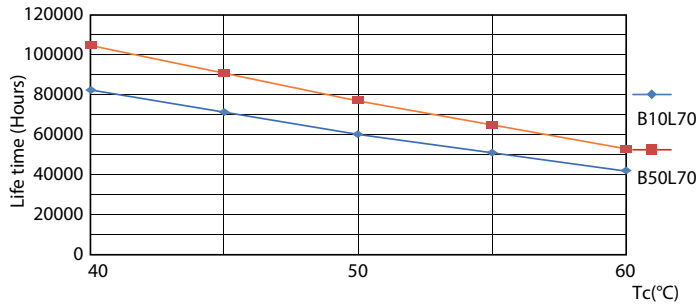
Life Expectancy Diagram



LEDtube_100K_4060_FailureRate-LED

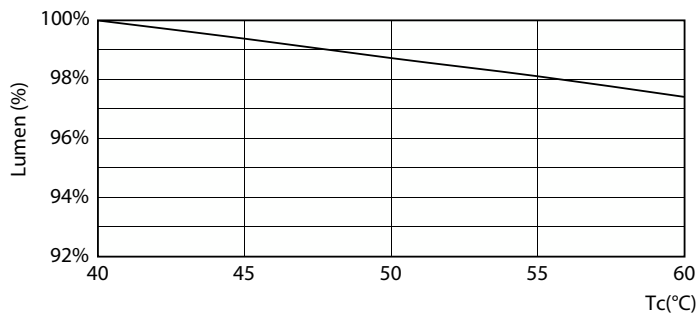
MASTER LED tube T8 UltraEfficient with Recycled Plastic

Lifetime



LifetimeVsTc

Lumen Maintenance Diagram - MAS LEDtube 1200mm UE 11.9W 865 T8 EELA



Lumen Maintenance Diagram - MAS LEDtube 1200mm UE 11.9W 865 T8 EELA

