



MASTER LED tube T8 UltraEfficient with Recycled Plastic



MAS LEDtube 1200mm UE 11.9W 865 T8 EELA

MASTER, LEDtube, T8, EM/Mains, 1200 mm, 11.9 W, 36W TL-D, 6500 K, 2500 lm, CRI 80, 100000 hour(s)

With energy prices rising and the EU's Green Deal continuing to fund energy efficient building renovations, many are looking into make their company's lighting more sustainable. The new Philips MASTER LEDtube UltraEfficient T8 is a true breakthrough on the way to more sustainable lighting. It replaces your current fluorescent tube or LED tube directly and offers immediately great energy cost reduction as well as a much longer lifetime!

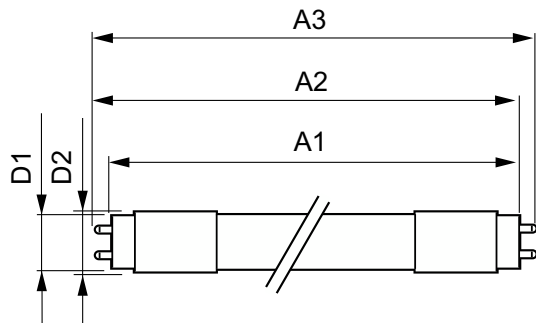
Product data

General Information		Color Designation	
Cap-Base	G13 Rotatable end-cap	Color Designation	Cool Daylight
Nominal lifetime	100,000 hour(s)	Correlated Color Temperature (Nom)	6500 K
Switching Cycle	200,000	Luminous Efficacy (rated) (Nom)	210 lm/W
Lighting Technology	LEDtube	Color Consistency	<6
Flux measurement reference	Sphere	Color rendering index (CRI)	80
Warranty period	10 years	LLMF At End Of Nominal Lifetime (Nom)	70 %
		Photobiological safety according to EN 62471	RG0
Light Technical		Sustainability Data	
Color Code	865 [CCT of 6500K]	Product non-virgin material ratio	26.5 %
Beam Angle (Nom)	160 degree(s)		
Luminous Flux	2,500 lm		

MASTER LED tube T8 UltraEfficient with Recycled Plastic

Operating and Electrical	
Input Frequency	50 to 60 Hz
Power Consumption	11.9 W
Lamp Current (Max)	63 mA
Lamp Current (Min)	48 mA
Starting Time (Nom)	0.5 s
Warm-up time to 60% light	0.5 s
Power Factor (Fraction)	0.9
Voltage (Nom)	220-240 V
LED alternative to fluorescent lamp power	36W TL-D
Inrush current at mains	5
Max. lamp no. on MCB B type 10A - Mains	120
Max. lamp no. on MCB B type 10A – EM ballast without Compensation Capacitor.	120
Max. lamp no. on MCB B type 10A – EM ballast with Compensation Capacitor.	15
Max. lamp no. on MCB B type 16A - Mains	190
Max. lamp no. on MCB B type 16A – EM ballast without Compensation Capacitor.	190
Max. lamp no. on MCB B type 16A – EM ballast with Compensation Capacitor.	25
Ballast Compatibility	EM/Mains
Temperature	
T-Case Maximum (Nom)	40 °C
Controls and Dimming	
Dimmable	No
Mechanical and Housing	
Bulb Finish	Frosted
Bulb Material	Plastic
Product Length	1,200 mm
Bulb Shape	T8
Net Weight (Piece)	0.230 kg

Dimensional drawing



Approval and Application	
Energy Efficiency Class	A
Energy Saving Product	Yes
Approval Marks	RoHS compliance CE marking KEMA Keur certificate ENEC certificate
Energy Consumption kWh/1000 h	12 kWh
EPREL Registration Number	2102399
CE mark	Yes
EU RoHS compliant	Yes
LED Innovations	UltraEfficient
Flickering value (PstLM) - Flickering value as per EN 61000-3-3	0.1
Stroboscopic effect visibility measure (SVM)	0.1
Ambient temperature range	-20 to +45 °C
Post-consumer recycled plastic material ratio	40 %

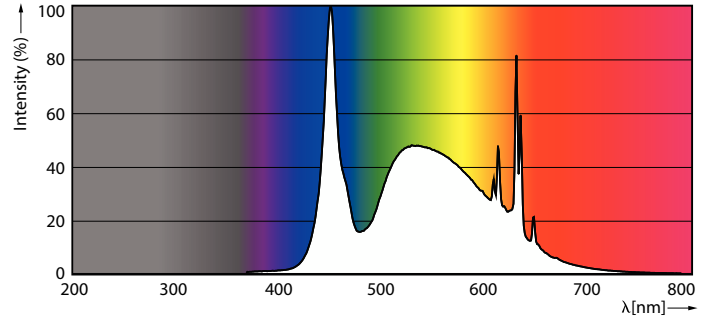
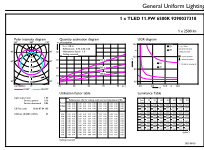
Application Conditions	
can it be used in closed luminaires	Yes

Product Data	
Order product name	MAS LEDtube 1200mm UE 11.9W 865 T8 EELA
Full product name	MAS LEDtube 1200mm UE 11.9W 865 T8 EELA
Full product code	872016926959000
Order code	929003731802
Material Nr. (12NC)	929003731802
Numerator - Quantity Per Pack	1
EAN/UPC - Product/Case	8720169269590
Numerator - Packs per outer box	10
EAN/UPC - Case	8720169269606

Product	D1	D2	A1	A2	A3
MAS LEDtube 1200mm UE 11.9W 865 T8 EELA	25.8 mm	28 mm	1,198.2 mm	1,205.3 mm	1,212.4 mm

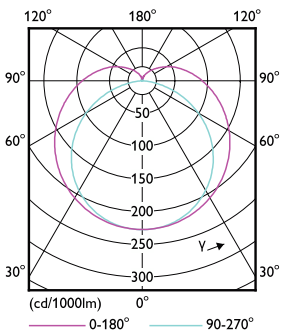
MASTER LED tube T8 UltraEfficient with Recycled Plastic

Photometric data



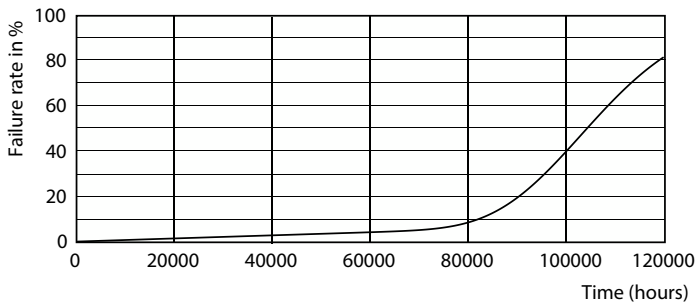
General uniform lighting - MAS LEDtube 1200mm UE 11.9W 865 T8 EELA

Spectral Power Distribution Colour - MAS LEDtube 1200mm UE 11.9W 865 T8 EELA

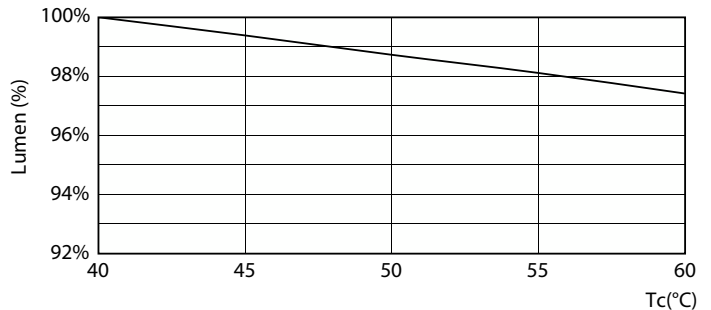


Light Distribution Diagram - MAS LEDtube 1200mm UE 11.9W 865 T8 EELA

Lifetime



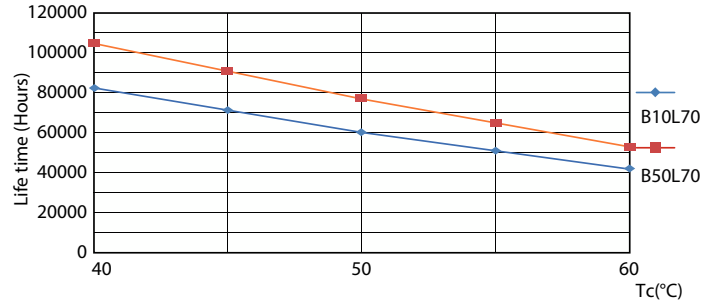
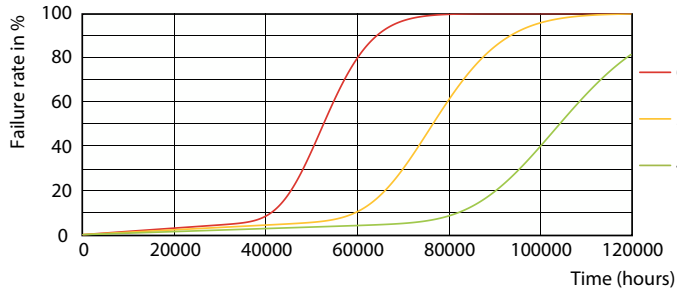
Life Expectancy Diagram



Lumen Maintenance Diagram - MAS LEDtube 1200mm UE 11.9W 865 T8 EELA

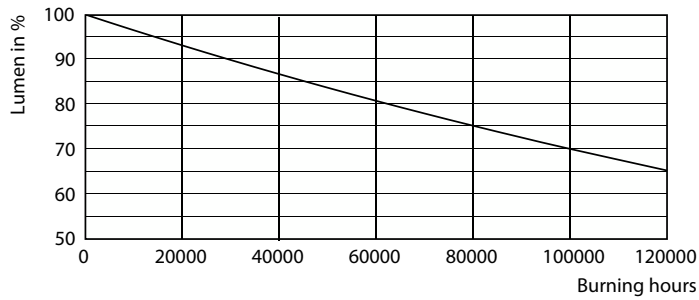
MASTER LED tube T8 UltraEfficient with Recycled Plastic

Lifetime



LEDtube_100K_4060_FailureRate-LED

LifetimeVsTc



Lumen Maintenance Diagram - MAS LEDtube 1200mm UE 11.9W 865 T8 EELA

