



DC-Fit (UL Type-C) T5

14T5/COR/46-850/DF21/G/DIM UL-C 25/1

CorePro, LEDtube, T5, 1200 mm, 14 W, 25 W, 5000 K, 2100 lm, 3550 lm, 50000 hour(s)

The DC-Fit (UL Type C) lamps are designed to be the perfect retrofit solution to move from traditional fluorescent lamps to energy saving LEDs. This lamp with DC driver has everything needed built into the lamp with proven energy savings, long life (up to 70k hours), better controllable performance and industry leading reliability features. All lamps in the DC-Fit family are double-ended to help simplify the installation. In addition, the DC lamps will have different lumen output with different dedicated DC drivers so that end users can have a comfortable environment with ideal light output.

Product data

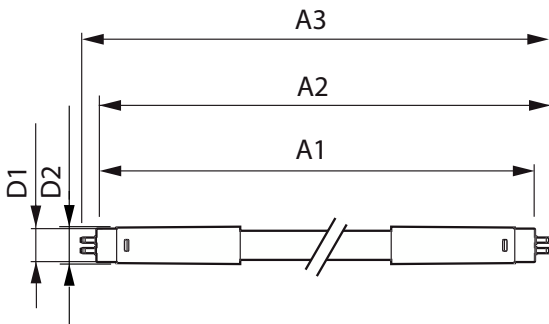
General Information		LLMF At End Of Nominal Lifetime (Nom) 70 %	
Cap-Base	G5		
Nominal lifetime	50,000 hour(s)		
Switching Cycle	50,000		
Lighting Technology	LEDtube		
Light Technical		Operating and Electrical	
Color Code	850 [CCT of 5000K]	Input Frequency	- Hz
Beam Angle (Nom)	200 degree(s)	Power Consumption	14.25 W
Luminous Flux	2,100 3,550 lm	Lamp Current (Max)	720 mA
Color Designation	Daylight	Lamp Current (Min)	200 mA
Correlated Color Temperature (Nom)	5000 K	Wattage Equivalent	54 W
Luminous Efficacy (rated) (Nom)	142 lm/W	Starting Time (Nom)	0.5 s
Color Consistency	<5	Warm-up time to 60% light	0.5 s
Color rendering index (CRI)	80	Power Factor (Fraction)	0.9
		Voltage (Nom)	38-46 V
		UL Type	UL Type C

DC-Fit (UL Type-C) T5

Temperature	
T-Case Maximum (Nom)	65 °C
Controls and Dimming	
Dimmable	Only with specific dimmers
Mechanical and Housing	
Bulb Finish	Frosted
Bulb Material	Glass
Product Length	1,200 mm
Bulb Shape	T5
Net Weight (Piece)	0.140 kg
Approval and Application	
Energy Saving Product	Yes
Approval Marks	RoHS compliance UL certificate DLC compliance

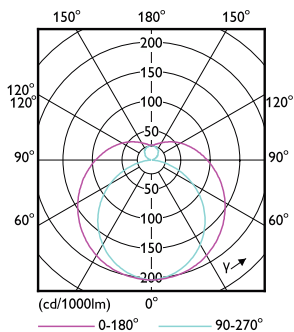
EU RoHS compliant	Yes
Ambient temperature range	-20 to +45 °C
Application Conditions	
can it be used in closed luminaires	Yes
Product Data	
Order product name	14T5/COR/46-850/DF21/G/DIM UL-C 25/1
Full product name	14T5/COR/46-850/DF21/G/DIM UL-C 25/1
Order code	929003651604
Material Nr. (12NC)	929003651604
Numerator - Quantity Per Pack	1
EAN/UPC - Product/Case	046677583972
Numerator - Packs per outer box	25
EAN/UPC - Case	50046677583977

Dimensional drawing

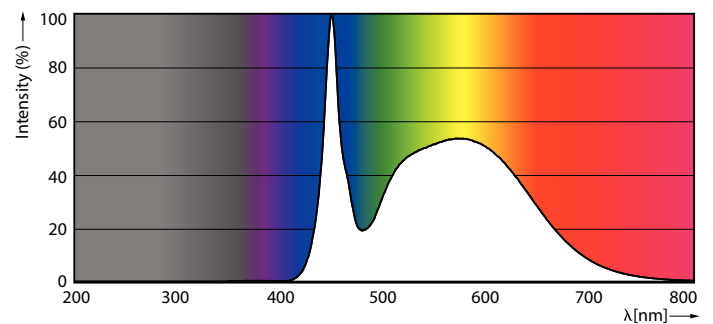


Product	D1	D2	A1	A2	A3
14T5/COR/46-850/DF21/G/DIM UL-C 25/1	15.3 mm	18.4 mm	1,147.8 mm	1,154.9 mm	1,162 mm

Photometric data



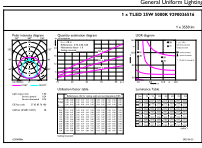
Light Distribution Diagram - 14T5/COR/46-850/DF21/G/DIM UL-C 25/1



Spectral Power Distribution Colour - 14T5/COR/46-850/DF21/G/DIM UL-C 25/1

DC-Fit (UL Type-C) T5

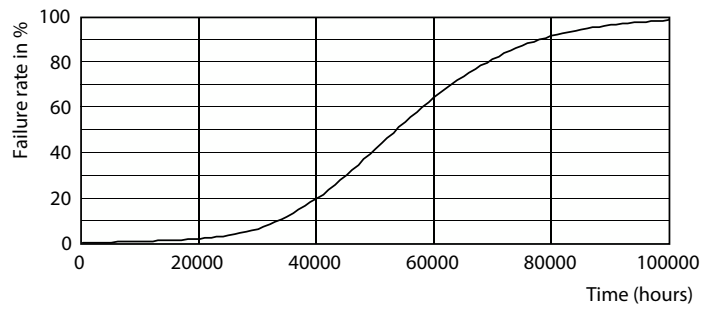
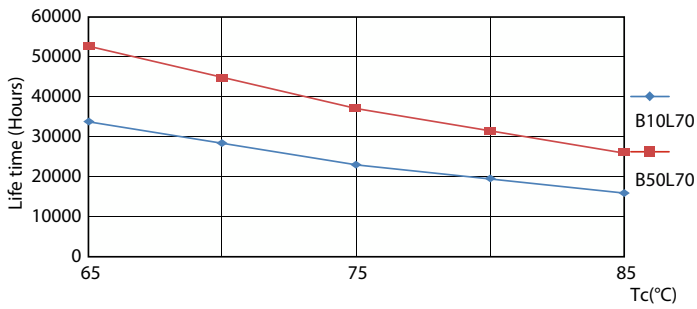
Photometric data



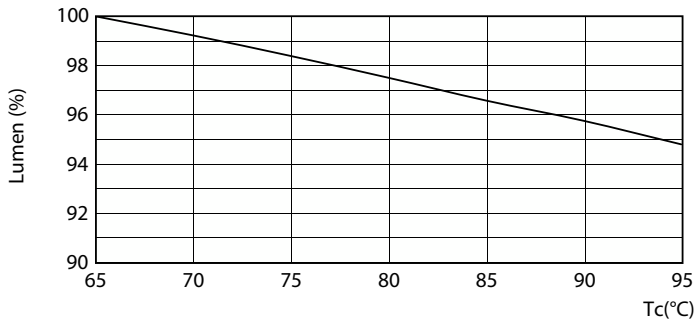
General Uniform Lighting
1-1/2\"/>

General uniform lighting - 14T5/COR/46-850/DF21/G/DIM UL-C 25/1

Lifetime

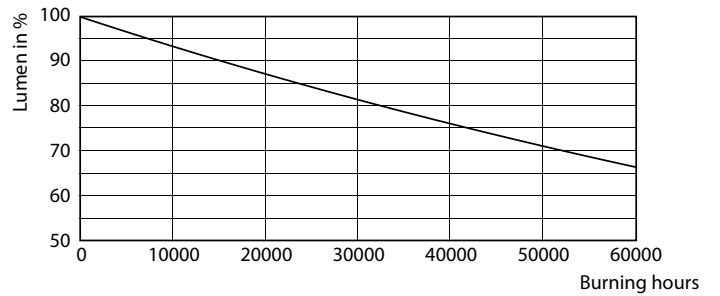


LifetimeVsTc



Lumen Maintenance Diagram - 14T5/COR/46-850/DF21/G/DIM UL-C 25/1

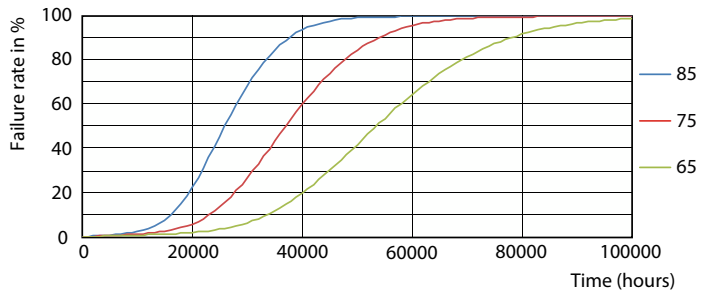
Life Expectancy Diagram



Lumen Maintenance Diagram - 14T5/COR/46-850/DF21/G/DIM UL-C 25/1

DC-Fit (UL Type-C) T5

Lifetime



FailureRate

