



MASTER LEDtube T8

MAS LEDtube 590mm 6.5W865 T8 TW

LEDtube, T8, 600 mm, 6.5 W, 6500 K, 1050 lm, 50000 hour(s)

The Philips MASTER LEDtube integrates a LED light source into a traditional fluorescent form factor. Its unique design creates a perfectly uniform visual appearance, which cannot be distinguished from traditional fluorescent. These T8 LED tubes are the right choice for absolute performance and are designed to stand up to everyday conditions. Unparalleled savings thanks to low energy consumption and an exceptionally long lifetime ensure this tube masters every demanding application.

Warnings and Safety

- NOTE: The overall energy efficiency and light distribution of any installation that uses these lamps will be determined by the design of the installation.

Product data

General Information	
Cap-Base	G13
Nominal lifetime	50,000 hour(s)
Switching Cycle	200,000
Lighting Technology	LEDtube

Light Technical	
Color Code	865 [CCT of 6500K]
Beam Angle (Nom)	160 degree(s)
Luminous Flux	1,050 lm
Color Designation	Cool Daylight
Correlated Color Temperature (Nom)	6500 K
Luminous Efficacy (rated) (Nom)	161 lm/W
Color Consistency	<6

Color rendering index (CRI)	80
LLMF At End Of Nominal Lifetime (Nom)	70 %

Sustainability Data	
Product non-virgin material ratio	0 %

Operating and Electrical	
Input Frequency	50 to 60 Hz
Power Consumption	6.5 W
Lamp Current (Max)	65 mA
Lamp Current (Min)	26 mA
Wattage Equivalent	18 W
Starting Time (Nom)	0.5 s
Warm-up time to 60% light	0.5 s

MASTER LEDtube T8

Power Factor (Fraction)	0.9
Voltage (Nom)	100-277 V

Temperature

T-Case Maximum (Nom)	40 °C
----------------------	-------

Controls and Dimming

Dimmable	No
----------	----

Mechanical and Housing

Bulb Finish	Frosted
Bulb Material	Plastic
Product Length	600 mm
Bulb Shape	T8
Net Weight (Piece)	0.111 kg

Approval and Application

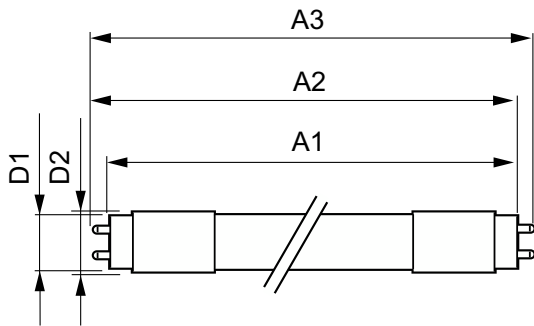
Energy Saving Product	Yes
-----------------------	-----

Approval Marks	RoHS compliance
EU RoHS compliant	Yes
Ambient temperature range	-20 to +45 °C
Post-consumer recycled plastic material ratio	0 %

Product Data

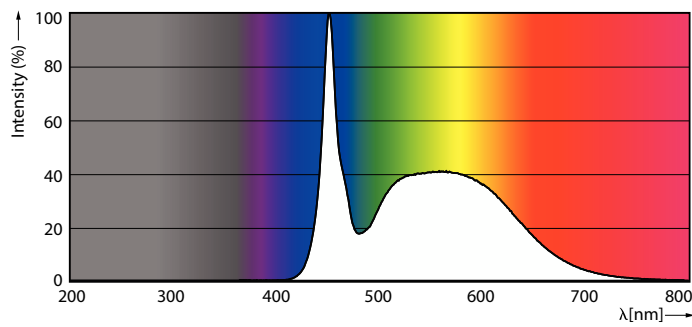
Order product name	MAS LEDtube 590mm 6.5W865 T8 TW
Full product name	MAS LEDtube 590mm 6.5W865 T8 TW
Full product code	872016919469400
Order code	929003636608
Material Nr. (12NC)	929003636608
Numerator - Quantity Per Pack	1
EAN/UPC - Product/Case	8720169194694
Numerator - Packs per outer box	20
EAN/UPC - Case	8720169194700

Dimensional drawing

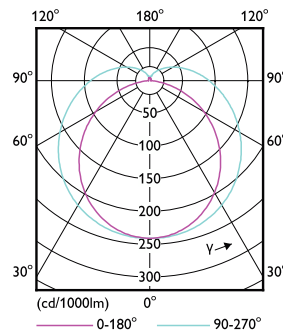


Product	D1	D2	A1	A2	A3
MAS LEDtube 590mm 6.5W865 T8 TW	25.6 mm	28 mm	588.5 mm	595.5 mm	602.5 mm

Photometric data



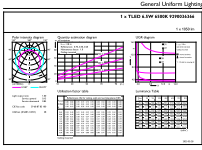
Spectral Power Distribution Colour - MAS LEDtube 590mm 6.5W865 T8 TW



Light Distribution Diagram - MAS LEDtube 590mm 6.5W865 T8 TW

MASTER LEDtube T8

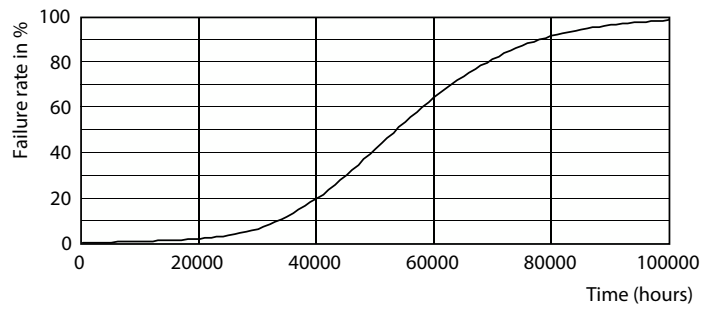
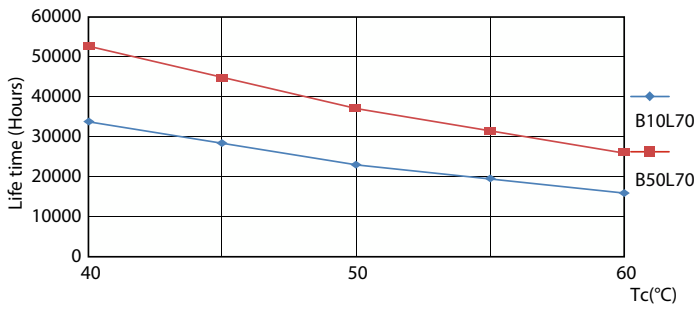
Photometric data



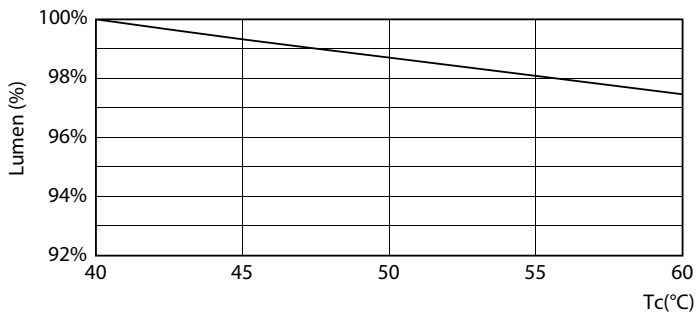
Master Electronics Ltd. Hong Kong, P.R.C. Page 10

General uniform lighting - MAS LEDtube 590mm 6.5W865 T8 TW

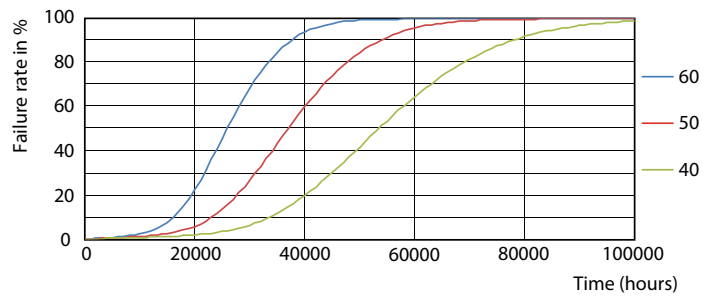
Lifetime



LifetimeVsTc



Life Expectancy Diagram

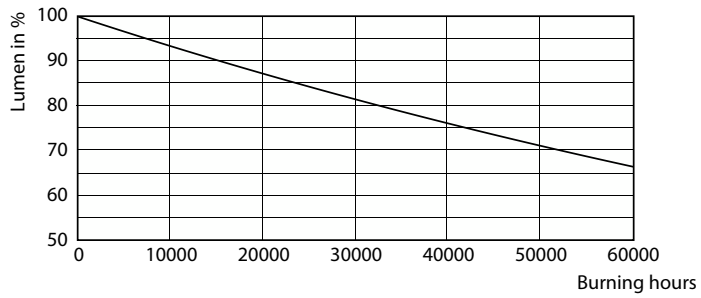


Lumen Maintenance Diagram - MAS LEDtube 590mm 6.5W865 T8 TW

FailureRate

MASTER LEDtube T8

Lifetime



Lumen Maintenance Diagram - MAS LEDtube 590mm 6.5W865 T8 TW

