



# MASTER LEDtube T8

## MAS LEDtube 580mm 6.5W865 T8 TW

LEDtube, T8, 600 mm, 6.5 W, 6500 K, 1050 lm, 50000 hour(s)

The Philips MASTER LEDtube integrates a LED light source into a traditional fluorescent form factor. Its unique design creates a perfectly uniform visual appearance, which cannot be distinguished from traditional fluorescent. These T8 LED tubes are the right choice for absolute performance and are designed to stand up to everyday conditions. Unparalleled savings thanks to low energy consumption and an exceptionally long lifetime ensure this tube masters every demanding application.

### Warnings and Safety

- NOTE: The overall energy efficiency and light distribution of any installation that uses these lamps will be determined by the design of the installation.

### Product data

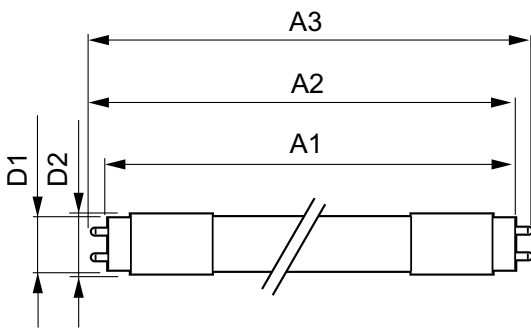
General Information		Color rendering index (CRI)	
Cap-Base	G13		80
Nominal lifetime	50,000 hour(s)	LLMF At End Of Nominal Lifetime (Nom)	70 %
Switching Cycle	200,000	<b>Sustainability Data</b>	
Lighting Technology	LEDtube	Product non-virgin material ratio	0 %
Light Technical		Operating and Electrical	
Color Code	865 [CCT of 6500K]	Input Frequency	50 to 60 Hz
Beam Angle (Nom)	160 degree(s)	Power Consumption	6.5 W
Luminous Flux	1,050 lm	Lamp Current (Max)	65 mA
Color Designation	Cool Daylight	Lamp Current (Min)	26 mA
Correlated Color Temperature (Nom)	6500 K	Wattage Equivalent	18 W
Luminous Efficacy (rated) (Nom)	161 lm/W	Starting Time (Nom)	0.5 s
Color Consistency	<6	Warm-up time to 60% light	0.5 s

# MASTER LEDtube T8

Power Factor (Fraction)	0.9
Voltage (Nom)	100-277 V
<b>Temperature</b>	
T-Case Maximum (Nom)	40 °C
<b>Controls and Dimming</b>	
Dimmable	No
<b>Mechanical and Housing</b>	
Bulb Finish	Frosted
Bulb Material	Plastic
Product Length	600 mm
Bulb Shape	T8
Net Weight (Piece)	0.109 kg
<b>Approval and Application</b>	
Energy Saving Product	Yes

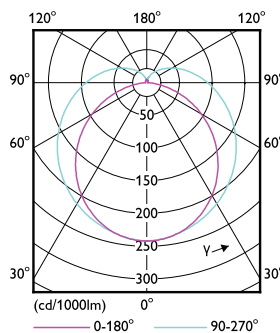
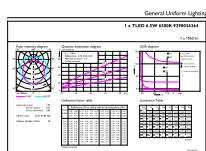
Approval Marks	RoHS compliance
EU RoHS compliant	Yes
Ambient temperature range	-20 to +45 °C
Post-consumer recycled plastic material ratio	0 %
<b>Product Data</b>	
Order product name	MAS LEDtube 580mm 6.5W865 T8 TW
Full product name	MAS LEDtube 580mm 6.5W865 T8 TW
Full product code	872016919465600
Order code	929003636408
Material Nr. (12NC)	929003636408
Numerator - Quantity Per Pack	1
EAN/UPC - Product/Case	8720169194656
Numerator - Packs per outer box	20
EAN/UPC - Case	8720169194663

## Dimensional drawing



Product	D1	D2	A1	A2	A3
MAS LEDtube 580mm 6.5W865 T8 TW	25.6 mm	28 mm	580 mm	586.5 mm	594 mm

## Photometric data

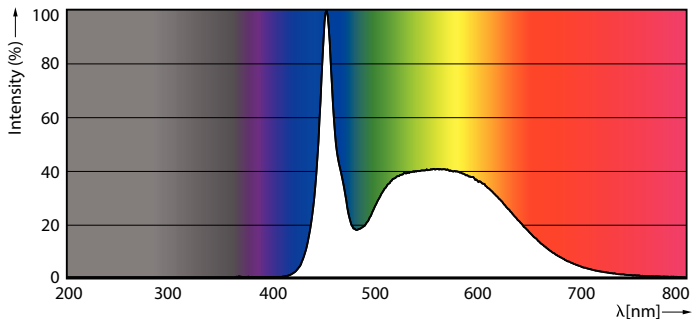


General uniform lighting - MAS LEDtube 580mm 6.5W865 T8 TW

Light Distribution Diagram - MAS LEDtube 580mm 6.5W865 T8 TW

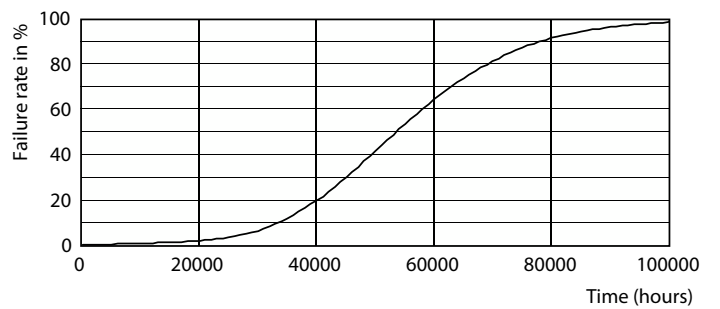
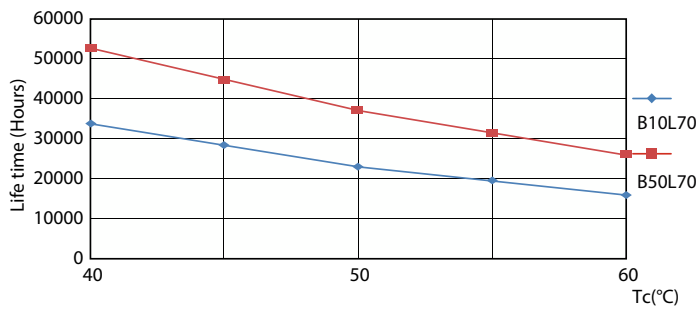
# MASTER LEDtube T8

## Photometric data



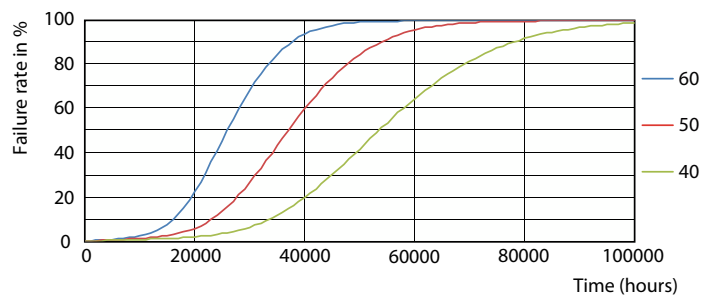
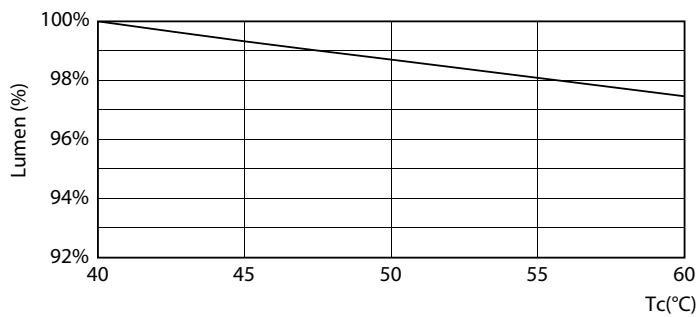
Spectral Power Distribution Colour - MAS LEDtube 580mm 6.5W865 T8 TW

## Lifetime



LifetimeVsTc

Life Expectancy Diagram

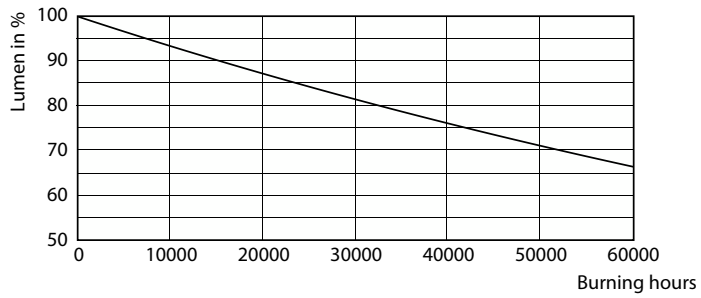


Lumen Maintenance Diagram - MAS LEDtube 580mm 6.5W865 T8 TW

FailureRate

# MASTER LEDtube T8

## Lifetime



Lumen Maintenance Diagram - MAS LEDtube 580mm 6.5W865 T8 TW

