



CorePro LED tube EM/ Mains T8

CorePro LEDTube 36 8ft 32W 865 T8 WV

CorePro, LEDtube, T8, Mains, 2400 mm, 100-240 V, 32 W, 75W, 6500 K, 3600 lm, 30000 hour(s)

Philips CorePro LEDtubes are the quick and easy way to replace T8 fluorescent or other LED tubes with a fast pay back time. Not only does the Core range of LEDtubes require a low initial investment, but LED energy efficiency also delivers instant savings that you can bank on over a long and reliable lifetime. Plus, with the same lamp size and light distribution as fluorescent alternatives, you'll never know the difference. There are two ways to install these LED tubes: Rewire your existing fluorescent-based luminaires so the CorePro LEDtubes work directly on the Mains. Or simply change the fluorescent starter to an LED starter that can be used with your Electromagnetic ballasts.

Warnings and Safety

- NOTE: The overall energy efficiency and light distribution of any installation that uses these lamps will be determined by the design of the installation.
- Installation must be done according to the installation diagrams provided with the lamp or available online. Installation must be done by a certified professional.

Product data

General Information		Light Technical	
Cap-Base	FA8	Color Code	865 [CCT of 6500K]
Nominal lifetime	30,000 hour(s)	Beam Angle (Nom)	240 degree(s)
Switching Cycle	50,000	Luminous Flux	3,600 lm
Lighting Technology	LEDtube	Color Designation	Cool Daylight
		Correlated Color Temperature (Nom)	6500 K

CorePro LED tube EM/Mains T8

Luminous Efficacy (rated) (Nom)	112 lm/W
Color Consistency	<6
Color rendering index (CRI)	80
LLMF At End Of Nominal Lifetime (Nom)	70 %

Operating and Electrical

Input Frequency	50 to 60 Hz
Power Consumption	32 W
Wattage Equivalent	75 W
Starting Time (Nom)	0.5 s
Warm-up time to 60% light	0.5 s
Power Factor (Fraction)	0.5
Voltage (Nom)	100–240 V
LED alternative to fluorescent lamp power	75W
Ballast Compatibility	Mains

Temperature

T-Case Maximum (Nom)	60 °C
----------------------	-------

Controls and Dimming

Dimmable	No
----------	----

Mechanical and Housing

Bulb Finish	Frosted
Bulb Material	Glass
Product Length	2,400 mm
Bulb Shape	T8

Net Weight (Piece)	0.400 kg
--------------------	----------

Approval and Application

Energy Saving Product	Yes
Approval Marks	RoHS compliance KEMA Keur certificate
EU RoHS compliant	Yes
Ambient temperature range	-20 to +45 °C
Post-consumer recycled plastic material ratio	0 %

Application Conditions

Wireless Technology	Not applicable
---------------------	----------------

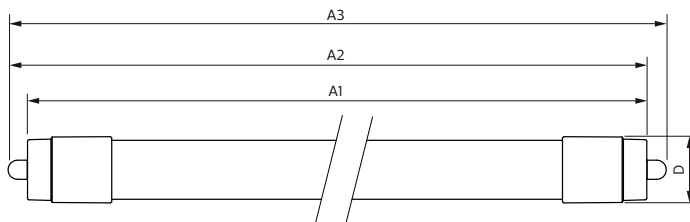
Sustainability Data

Product non-virgin material ratio	0 %
-----------------------------------	-----

Product Data

Order product name	CorePro LEDTube 36 8ft 32W 865 T8 WV
Full product name	CorePro LEDTube 36 8ft 32W 865 T8 WV
Order code	929003604911
Material Nr. (12NC)	929003604911
Numerator - Quantity Per Pack	1
EAN/UPC - Product/Case	046677609634
Numerator - Packs per outer box	15
EAN/UPC - Case	50046677609639

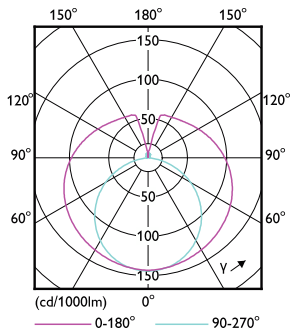
Dimensional drawing



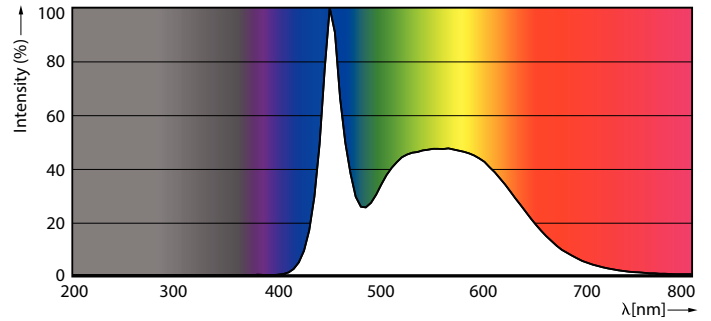
Product	D1	D2	A1	A2	A3
CorePro LEDTube 36 8ft 32W 865 T8 WV	25.8 mm	28 mm	2,374.3 mm	2,380.2 mm	2,388.5 mm

CorePro LED tube EM/Mains T8

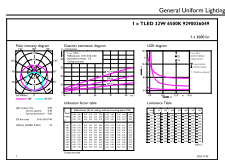
Photometric data



Light Distribution Diagram - CorePro LEDTube 36 8ft 32W 865 T8 WV



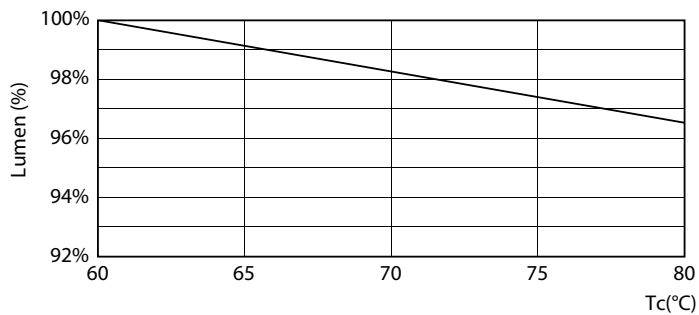
Spectral Power Distribution Colour - CorePro LEDTube 36 8ft 32W 865 T8 WV



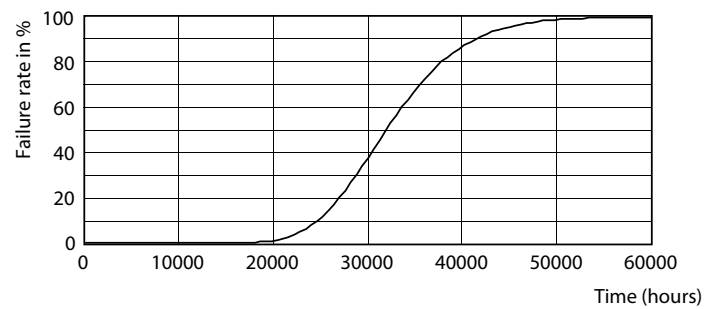
General uniform lighting - CorePro LEDTube 36 8ft 32W 865 T8 WV

General uniform lighting - CorePro LEDTube 36 8ft 32W 865 T8 WV

Lifetime



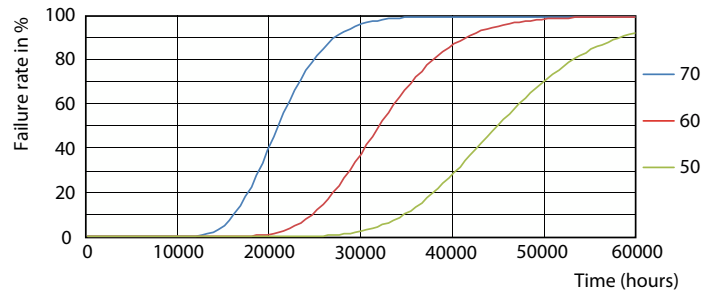
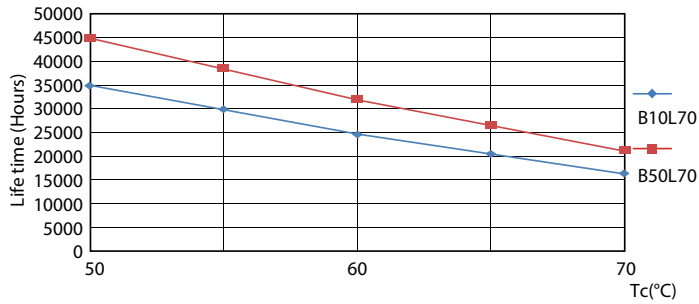
Lumen Maintenance Diagram - CorePro LEDTube 36 8ft 32W 865 T8 WV



Life Expectancy Diagram

CorePro LED tube EM/Mains T8

Lifetime



LifetimeVsTc

FailureRate



Lumen Maintenance Diagram - CorePro LEDTube 36 8ft 32W 865 T8 WV

