



# MASTER LED tube InstantFit HF T5



## MAS LEDtube HF 900mm HO 18.5W 840 T5

MASTER, LEDtube, T5, HF, 900 mm, 18.5 W, 39W TL5 HO, 4000 K, 2800 lm, CRI 80, 60000 h

MASTER, LEDtube, T5, HF, 900 mm, 18.5 W, LED alternative to 39W TL5 HO, 4000 K, 2800 lm, CRI 80, 60000 h, 151 lm/W, EEL D, G5, Glass, 900 mm, RG0, SDCM 6, PF 0.9, IP20

### Product data

General Information		Photobiological safety according to EN 62471	
Cap base	G5	RG0	
Nominal lifetime	60,000 h	Operating and Electrical	
Switching Cycle	50,000	Line Frequency	30K to 100K Hz
Lighting Technology	LEDtube	Input frequency	30 K to 100 K Hz
Flux measurement reference	Sphere	Power Consumption	18.5 W
Warranty period	5 years	Lamp current (max.)	350 mA
Light Technical		Lamp current (min.)	120 mA
Colour Code	840 [CCT of 4000K]	Starting time (nom.)	0.5 s
Beam angle (nom.)	200 degree(s)	Warm-up time to 60% light	0.5 s
Luminous Flux	2,800 lm	Power Factor (Fraction)	0.9
Colour designation	Cool White (CW)	Voltage (nom.)	60-100 V
Correlated Colour Temperature (Nom)	4000 K	LED alternative to fluorescent lamp power	39W TL5 HO
Luminous efficacy (rated) (nom.)	151 lm/W	Inrush current at mains	-
Colour consistency	<6	Max. lamp no. on MCB B type 10A — Mains	-
Colour rendering index (CRI)	80	Max. lamp no. on MCB B type 10A – EM ballast	-
LLMF at end of nominal lifetime (nom.)	70 %	without Compensation Capacitor.	

# MASTER LED tube InstantFit HF T5

Max. lamp no. on MCB B type 10A – EM ballast with Compensation Capacitor.	-
Max. lamp no. on MCB B type 16A – Mains	-
Max. lamp no. on MCB B type 16A – EM ballast without Compensation Capacitor.	-
Max. lamp no. on MCB B type 16A – EM ballast with Compensation Capacitor.	-
Ballast Compatibility	HF

## Temperature

T-Case maximum (nom.)	60 °C
-----------------------	-------

## Controls and Dimming

Dimmable	Yes – Check ballast compatibility
----------	-----------------------------------

## Mechanical and Housing

Lamp Finish	Frosted
Bulb material	Glass
Product length	900 mm
Bulb shape	T5
Net Weight (Piece)	0.115 kg

## Approval and Application

Energy Efficiency Class	D
Energy-saving product	Yes

Approval marks	RoHS compliance KEMA Keur certificate
Energy consumption kWh/1,000 hours	19 kWh
EPREL Registration Number	1407661
CE mark	Yes
EU RoHS compliant	Yes
Ambient temperature range	-20°C to 45°C

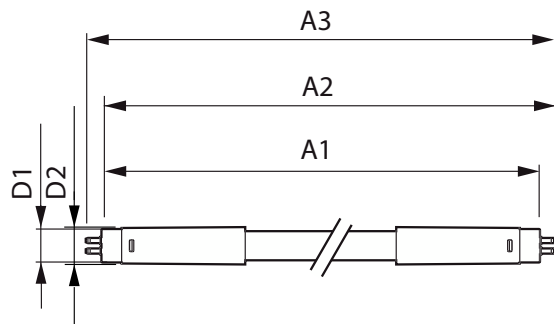
## Application Conditions

Wireless Technology	Not applicable
---------------------	----------------

## Product Data

Order product name	MAS LEDtube HF 900mm HO 18.5W 840 T5
Full product name	MAS LEDtube HF 900mm HO 18.5W 840 T5
Full EOC	872016916315700
Order code	929003596602
Material no. (12 NC)	929003596602
Numerator – quantity per pack	1
EAN/UPC – Product/Case	8720169163157
Numerator – packs per outer box	10
EAN/UPC – Case	8720169163164

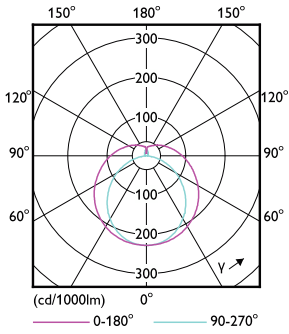
## Dimensional drawing



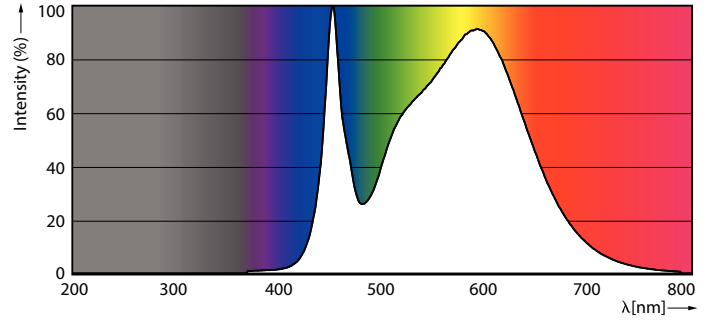
Product	D1	D2	A1	A2	A3
MAS LEDtube HF 900mm HO 18.5W 840 T5	15.5 mm	16/19 mm	849 mm	856 mm	863 mm

# MASTER LED tube InstantFit HF T5

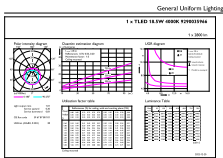
## Photometric data



Light Distribution Diagram - MAS LEDtube HF 900mm HO 18.5W 840 T5



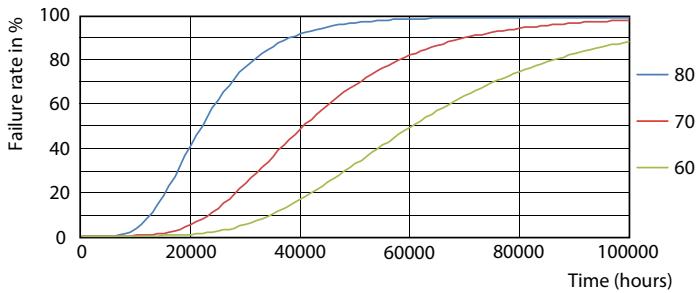
Spectral Power Distribution Colour - MAS LEDtube HF 900mm HO 18.5W 840 T5



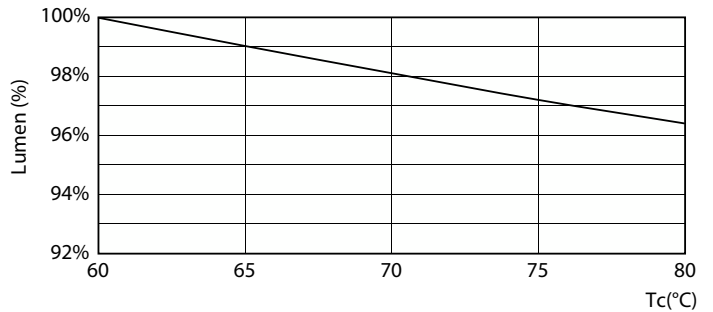
General Uniform Lighting  
 • 180° LED T5 LOW BEAM TYPE  
 • 180° LED T5 LOW BEAM TYPE  
 • 180° LED T5 LOW BEAM TYPE

General uniform lighting - MAS LEDtube HF 900mm HO 18.5W 840 T5

## Lifetime



FailureRate



Lumen Maintenance Diagram - MAS LEDtube HF 900mm HO 18.5W 840 T5

# MASTER LED tube InstantFit HF T5

## Lifetime



LifetimeVsTc

Lumen Maintenance Diagram - MAS LEDtube HF 900mm HO 18.5W 840 T5



Life Expectancy Diagram

