

CorePro LED PLT 4P



CorePro LED PLT HF 15W 830 4P GX24q-3

CorePro, LED, PL-T, HF, 141 mm, 15 W, 32W PL-T, 3000 K, 1620 lm, CRI 82, 30000 hour(s)

CorePro, LED, PL-T, HF, 141 mm, 15 W, LED alternative to 32W PL-T, 3000 K, 1620 lm, CRI 82, 30000 hour(s), 108 lm/W, EEL F, GX24Q-3 Rotatable end-cap, Beam angle 120 degree(s), Plastic, RG1, SDCM 6, PF 0.9, IP20

Product data

General Information	
Cap-Base	GX24Q-3 Rotatable end-cap
Nominal lifetime	30,000 hour(s)
Switching Cycle	200,000
Lighting Technology	LED
Flux measurement reference	Sphere
Warranty period	3 years
Light Technical	
Color Code	830 [CCT of 3000K]
Beam Angle (Nom)	120 degree(s)
Luminous Flux	1,620 lm
Color Designation	White (WH)
Correlated Color Temperature (Nom)	3000 K
Luminous Efficacy (rated) (Nom)	108 lm/W
Color Consistency	<6
Color rendering index (CRI)	82
LLMF At End Of Nominal Lifetime (Nom)	70 %
Photobiological safety according to EN 62471	RG1

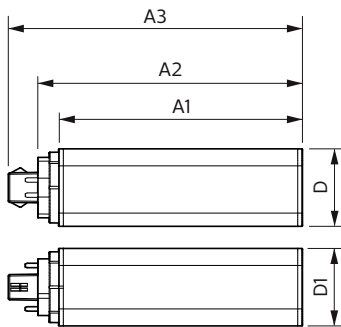
Operating and Electrical	
Line Frequency	20K-80K Hz
Input Frequency	20K-80K Hz
Power Consumption	15 W
Lamp Current (Max)	400 mA
Lamp Current (Min)	250 mA
Starting Time (Nom)	0.5 s
Warm-up time to 60% light	0.5 s
Power Factor (Fraction)	0.9
Voltage (Nom)	20-60 V
LED alternative to fluorescent lamp power	32W PL-T
Inrush current at mains	-
Max. lamp no. on MCB B type 10A - Mains	-
Max. lamp no. on MCB B type 10A – EM ballast without Compensation Capacitor.	-
Max. lamp no. on MCB B type 10A – EM ballast with Compensation Capacitor.	-
Max. lamp no. on MCB B type 16A - Mains	-
Max. lamp no. on MCB B type 16A – EM ballast without Compensation Capacitor.	-

CorePro LED PLT 4P

Max. lamp no. on MCB B type 16A – EM ballast with Compensation Capacitor.	-
Ballast Compatibility	HF
Temperature	
T-Case Maximum (Nom)	70 °C
Controls and Dimming	
Dimmable	No
Mechanical and Housing	
Bulb Finish	Frosted
Bulb Material	Plastic
Product Length	141 mm
Bulb Shape	PL-T
Net Weight (Piece)	0.129 kg
Approval and Application	
Energy Efficiency Class	F
Energy Saving Product	Yes
Approval Marks	RoHS compliance KEMA Keur certificate
Energy Consumption kWh/1000 h	15 kWh

EPREL Registration Number	1361424
CE mark	Yes
EU RoHS compliant	Yes
Ambient temperature range	-20 °C to 35 °C
Application Conditions	
Wireless Technology	Not applicable
Product Data	
Order product name	CorePro LED PLT HF 15W 830 4P GX24q-3
Full product name	CorePro LED PLT HF 15W 830 4P GX24q-3
Full product code	871951448784000
Order code	929003576702
Material Nr. (12NC)	929003576702
Numerator - Quantity Per Pack	1
EAN/UPC - Product/Case	8719514487840
Numerator - Packs per outer box	20
EAN/UPC - Case	8719514487857

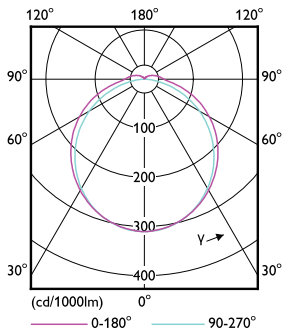
Dimensional drawing



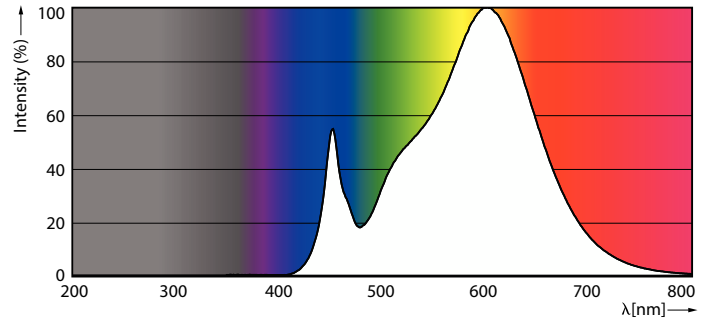
Product	D1	D2	A1	A2	A3
CorePro LED PLT HF 15W 830 4P GX24q-3	42 mm	42 mm	129 mm	141 mm	156 mm

CorePro LED PLT 4P

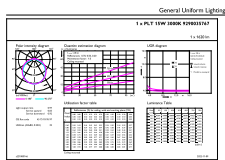
Photometric data



Light Distribution Diagram - CorePro LED PLT HF 15W 830 4P GX24q-3



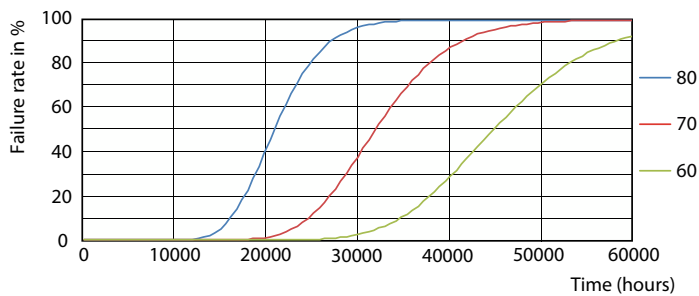
Spectral Power Distribution Colour - CorePro LED PLT HF 15W 830 4P GX24q-3



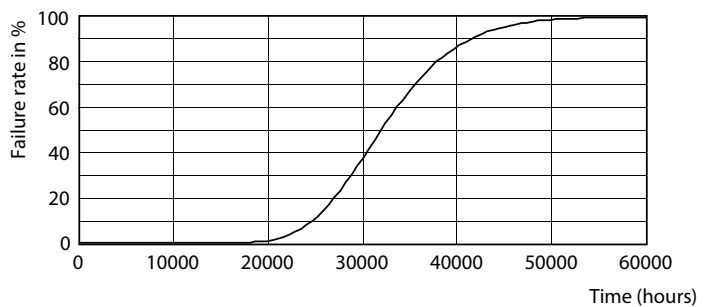
© 2024 Philips Lighting B.V. All rights reserved. Page 11

General uniform lighting - CorePro LED PLT HF 15W 830 4P GX24q-3

Lifetime



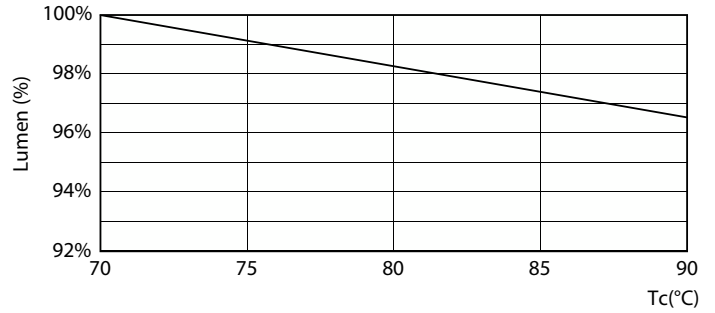
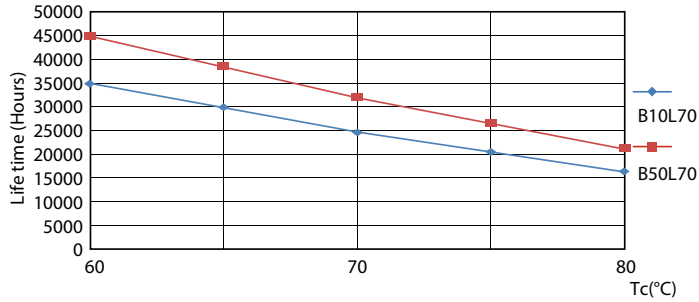
FailureRate



Life Expectancy Diagram

CorePro LED PLT 4P

Lifetime



LifetimeVsTc

Lumen Maintenance Diagram - CorePro LED PLT HF 15W 830 4P GX24q-3



Lumen Maintenance Diagram - CorePro LED PLT HF 15W 830 4P GX24q-3

