



MASTER LEDtube T8

MAS LEDtube 600mm HO 8W840 T8 MY

MASTER, LEDtube, T8, EM/Mains, 600 mm, 220–240 V, 8 W, 18W TL-D, 4000 K, 1050 lm, 60000 hour(s)

The Philips MASTER LEDtube integrates a LED light source into a traditional fluorescent form factor. Its unique design creates a perfectly uniform visual appearance, which cannot be distinguished from traditional fluorescent. These T8 LED tubes are the right choice for absolute performance and are designed to stand up to everyday conditions. Unparalleled savings thanks to low energy consumption and an exceptionally long lifetime ensure this tube masters every demanding application.

Warnings and Safety

· NOTE: The overall energy efficiency and light distribution of any installation that uses these lamps will be determined by the design of the installation.

Product data

General Information		Luminous Efficacy (rated) (Nom)	
Cap-Base	G13	Luminous Efficacy (rated) (Nom)	131.00 lm/W
Nominal lifetime	60,000 hour(s)	Color Consistency	<6
Switching Cycle	200,000	Color rendering index (CRI)	83
Lighting Technology	LEDtube	LLMF At End Of Nominal Lifetime (Nom)	70 %
Light Technical		Operating and Electrical	
Color Code	840 [CCT of 4000K]	Line Frequency	50 to 60 Hz
Beam Angle (Nom)	190 degree(s)	Input Frequency	50 to 60 Hz
Luminous Flux	1,050 lm	Power Consumption	8 W
Color Designation	Cool White (CW)	Lamp Current (Max)	40 mA
Correlated Color Temperature (Nom)	4000 K	Lamp Current (Min)	35 mA
		Starting Time (Nom)	0.5 s

MASTER LEDtube T8

Warm-up time to 60% light	0.5 s
Power Factor (Fraction)	0.9
Voltage (Nom)	220-240 V
LED alternative to fluorescent lamp power	18W TL-D
Ballast Compatibility	EM/Mains

Temperature

T-Case Maximum (Nom)	50 °C
----------------------	-------

Controls and Dimming

Dimmable	No
----------	----

Mechanical and Housing

Bulb Finish	Frosted
Bulb Material	Plastic
Product Length	600 mm
Bulb Shape	T8
Net Weight (Piece)	0.105 kg

Approval and Application

Energy Saving Product	Yes
-----------------------	-----

Approval Marks	RoHS compliance KEMA Keur certificate
EU RoHS compliant	Yes
Ambient temperature range	-20 °C to 45 °C

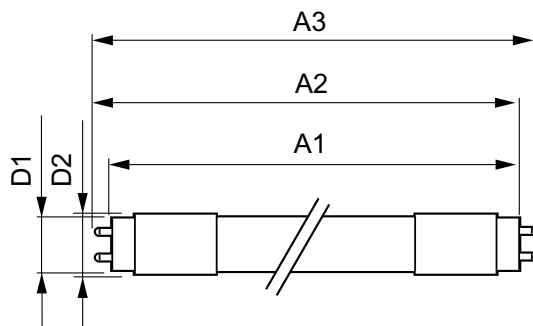
Application Conditions

Wireless Technology	Not applicable
---------------------	----------------

Product Data

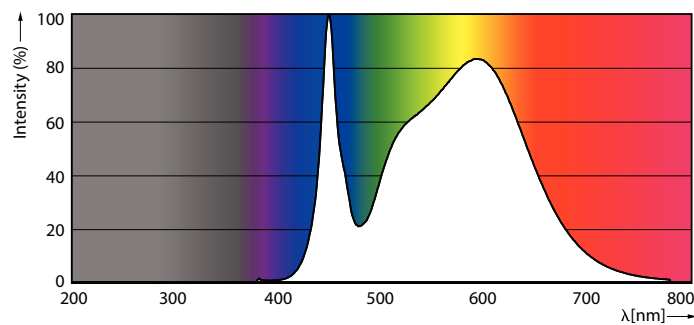
Order product name	MAS LEDtube 600mm HO 8W840 T8 MY
Full product name	MAS LEDtube 600mm HO 8W840 T8 MY
Full product code	871951446905100
Order code	929003557337
Material Nr. (12NC)	929003557337
Numerator - Quantity Per Pack	1
EAN/UPC - Product/Case	8719514469051
Numerator - Packs per outer box	20
EAN/UPC - Case	8719514469068

Dimensional drawing

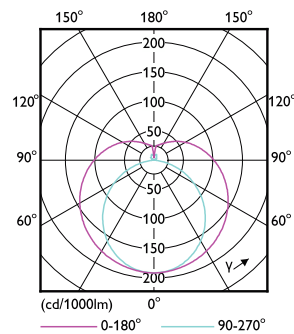


Product	D1	D2	A1	A2	A3
MAS LEDtube 600mm HO 8W840 T8 MY	25.8 mm	28 mm	588.5 mm	595.5 mm	602.5 mm

Photometric data



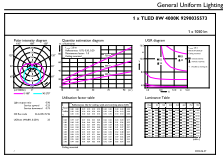
Spectral Power Distribution Colour - MAS LEDtube 600mm HO 8W840 T8 MY



Light Distribution Diagram - MAS LEDtube 600mm HO 8W840 T8 MY

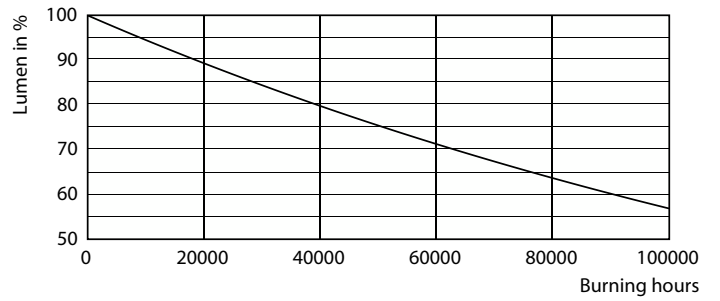
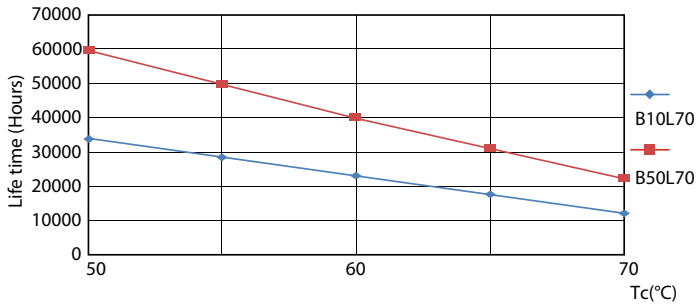
MASTER LEDtube T8

Photometric data



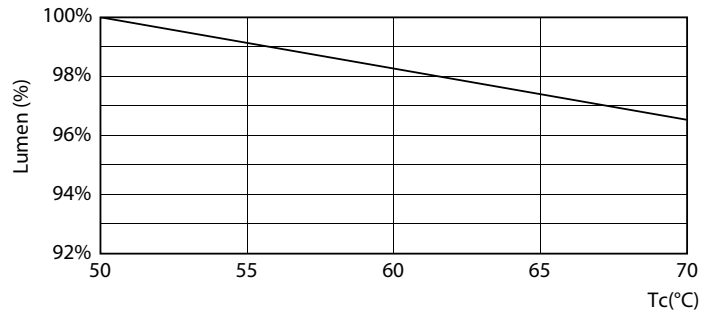
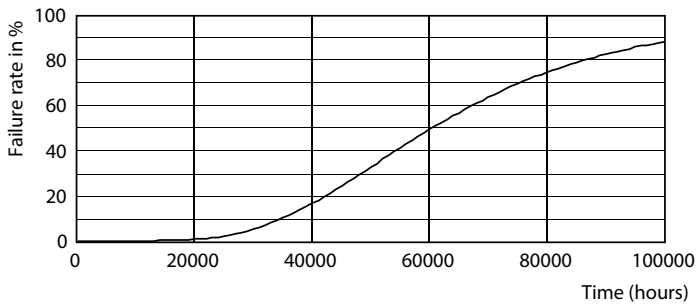
General uniform lighting - MAS LEDtube 600mm HO 8W840 T8 MY

Lifetime



LEDtube 60K 5070 LifetimeVsTc-LED

Lumen Maintenance Diagram - MAS LEDtube 600mm HO 8W840 T8 MY

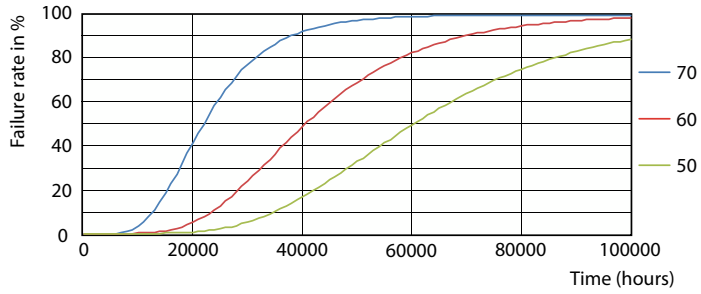


Life Expectancy Diagram

Lumen Maintenance Diagram - MAS LEDtube 600mm HO 8W840 T8 MY

MASTER LEDtube T8

Lifetime



LEDtube 60K 5070 FailureRate-LED

