



MASTER LEDtube T8

MAS LEDtube 1200mm HO 14W830 T8

MASTER, LEDtube, T8, EM/Mains, 1200 mm, 220-240 V, 14 W, 36W TL-D, 3000 K, 2000 lm, 60000 hour(s)

The Philips MASTER LEDtube integrates a LED light source into a traditional fluorescent form factor. Its unique design creates a perfectly uniform visual appearance, which cannot be distinguished from traditional fluorescent. These T8 LED tubes are the right choice for absolute performance and are designed to stand up to everyday conditions. Unparalleled savings thanks to low energy consumption and an exceptionally long lifetime ensure this tube masters every demanding application.

Warnings and Safety

· NOTE: The overall energy efficiency and light distribution of any installation that uses these lamps will be determined by the design of the installation.

Product data

General Information		Luminous Efficacy (rated) (Nom)	
Cap-Base	G13		142.00 lm/W
Nominal lifetime	60,000 hour(s)	Color Consistency	<6
Switching Cycle	200,000	Color rendering index (CRI)	80
Lighting Technology	LEDtube	LLMF At End Of Nominal Lifetime (Nom)	70 %
Light Technical		Operating and Electrical	
Color Code	830 [CCT of 3000K]	Line Frequency	50 to 60 Hz
Beam Angle (Nom)	190 degree(s)	Input Frequency	50 to 60 Hz
Luminous Flux	2,000 lm	Power Consumption	14 W
Color Designation	White (WH)	Lamp Current (Nom)	70 mA
Correlated Color Temperature (Nom)	3000 K	Starting Time (Nom)	0.5 s
		Warm-up time to 60% light	0.5 s

MASTER LEDtube T8

Power Factor (Fraction)	0.9
Voltage (Nom)	220-240 V
LED alternative to fluorescent lamp power	36W TL-D
Ballast Compatibility	EM/Mains
Temperature	
T-Case Maximum (Nom)	50 °C
Controls and Dimming	
Dimmable	No
Mechanical and Housing	
Bulb Finish	Frosted
Bulb Material	Plastic
Product Length	1,200 mm
Bulb Shape	T8
Net Weight (Piece)	0.180 kg
Approval and Application	
Energy Saving Product	Yes

Approval Marks	RoHS compliance KEMA Keur certificate
EU RoHS compliant	Yes
Ambient temperature range	-20 °C to 45 °C

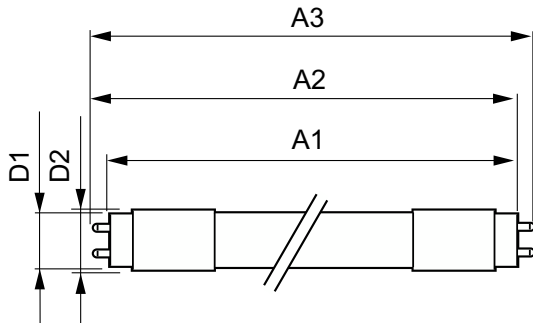
Application Conditions

Wireless Technology	Not applicable
---------------------	----------------

Product Data

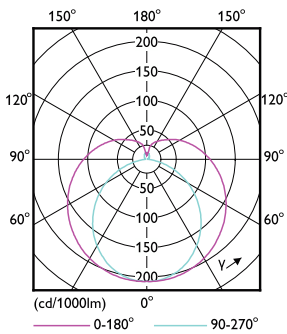
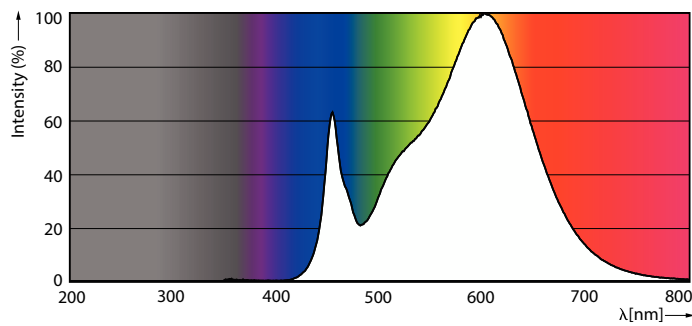
Order product name	MAS LEDtube 1200mm HO 14W830 T8
Full product name	MAS LEDtube 1200mm HO 14W830 T8
Full product code	871951446846700
Order code	929003556008
Material Nr. (12NC)	929003556008
Numerator - Quantity Per Pack	1
EAN/UPC - Product/Case	8719514468467
Numerator - Packs per outer box	20
EAN/UPC - Case	8719514468474

Dimensional drawing



Product	D1	D2	A1	A2	A3
MAS LEDtube 1200mm HO 14W830 T8	25.8 mm	28 mm	1,198.2 mm	1,205.3 mm	1,212.4 mm

Photometric data

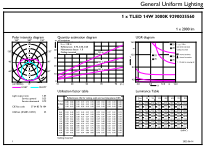


Spectral Power Distribution Colour - MAS LEDtube 1200mm HO 14W830 T8

Light Distribution Diagram - MAS LEDtube 1200mm HO 14W830 T8

MASTER LEDtube T8

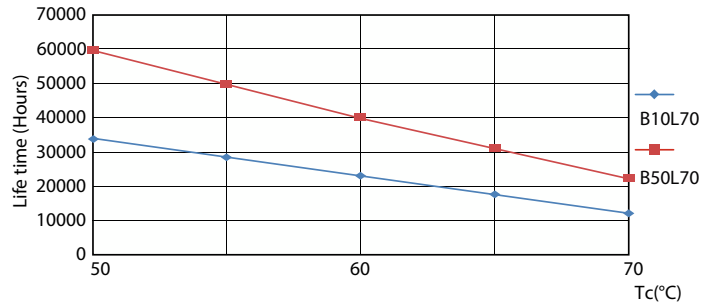
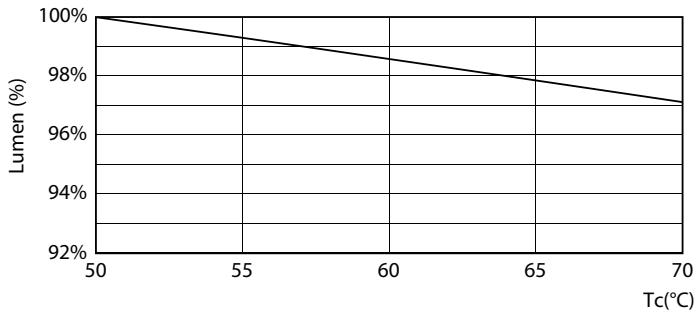
Photometric data



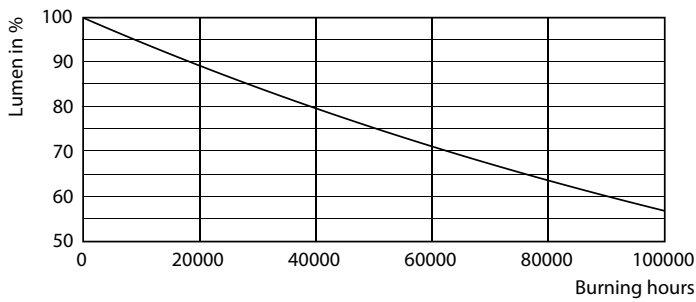
Technical Parameters 43 Page 10 of 11

General uniform lighting - MAS LEDtube 1200mm HO 14W830 T8

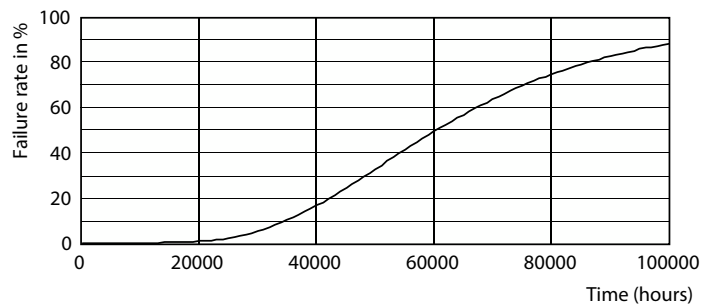
Lifetime



Lumen Maintenance Diagram - MAS LEDtube 1200mm HO 14W830 T8



LEDtube 60K 5070 LifetimeVsTc-LED

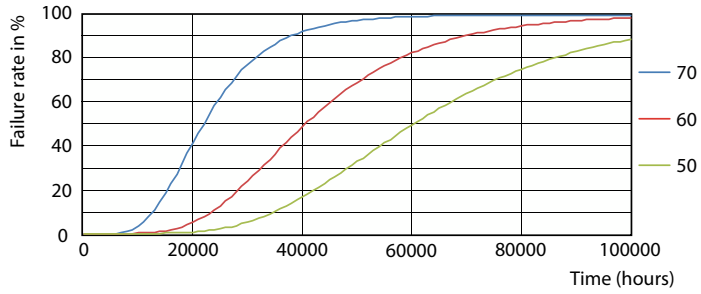


Lumen Maintenance Diagram - MAS LEDtube 1200mm HO 14W830 T8

Life Expectancy Diagram

MASTER LEDtube T8

Lifetime



LEDtube 60K 5070 FailureRate-LED

