



# MASTER LEDtube T8

## MAS LEDtube STD 1200mm 10.5W840 T8

MASTER, LEDtube, T8, EM/Mains, 1200 mm, 220-240 V, 10.5 W, 36W TL-D, 4000 K, 1600 lm, 60000 hour(s)

The Philips MASTER LEDtube integrates a LED light source into a traditional fluorescent form factor. Its unique design creates a perfectly uniform visual appearance, which cannot be distinguished from traditional fluorescent. These T8 LED tubes are the right choice for absolute performance and are designed to stand up to everyday conditions. Unparalleled savings thanks to low energy consumption and an exceptionally long lifetime ensure this tube masters every demanding application.

### Warnings and Safety

· NOTE: The overall energy efficiency and light distribution of any installation that uses these lamps will be determined by the design of the installation.

### Product data

General Information		Luminous Efficacy (rated) (Nom)	
Cap-Base	G13		152.00 lm/W
Nominal lifetime	60,000 hour(s)	Color Consistency	<6
Switching Cycle	200,000	Color rendering index (CRI)	80
Lighting Technology	LEDtube	LLMF At End Of Nominal Lifetime (Nom)	70 %
Light Technical		Operating and Electrical	
Color Code	840 [CCT of 4000K]	Line Frequency	50 to 60 Hz
Beam Angle (Nom)	190 degree(s)	Input Frequency	50 to 60 Hz
Luminous Flux	1,600 lm	Power Consumption	10.5 W
Color Designation	Cool White (CW)	Lamp Current (Nom)	53 mA
Correlated Color Temperature (Nom)	4000 K	Starting Time (Nom)	0.5 s
		Warm-up time to 60% light	0.5 s

# MASTER LEDtube T8

Power Factor (Fraction)	0.9
Voltage (Nom)	220-240 V
LED alternative to fluorescent lamp power	36W TL-D
Ballast Compatibility	EM/Mains

## Temperature

T-Case Maximum (Nom)	50 °C
----------------------	-------

## Controls and Dimming

Dimmable	No
----------	----

## Mechanical and Housing

Bulb Finish	Frosted
Bulb Material	Plastic
Product Length	1,200 mm
Bulb Shape	T8
Net Weight (Piece)	0.180 kg

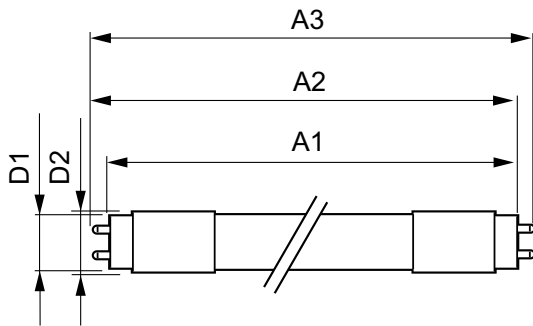
## Approval and Application

Energy Saving Product	Yes
Approval Marks	RoHS compliance KEMA Keur certificate
EU RoHS compliant	Yes
Ambient temperature range	-20 °C to 45 °C

## Product Data

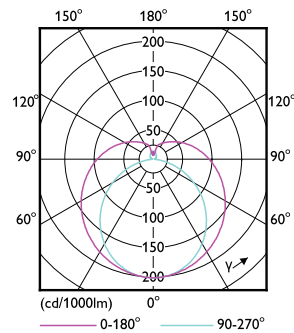
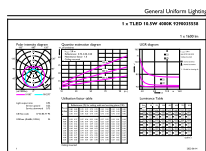
Order product name	MAS LEDtube STD 1200mm 10.5W840 T8
Full product name	MAS LEDtube STD 1200mm 10.5W840 T8
Full product code	871951446842900
Order code	929003555808
Material Nr. (12NC)	929003555808
Numerator - Quantity Per Pack	1
EAN/UPC - Product/Case	8719514468429
Numerator - Packs per outer box	20
EAN/UPC - Case	8719514468436

## Dimensional drawing



Product	D1	D2	A1	A2	A3
MAS LEDtube STD 1200mm 10.5W840 T8	25.8 mm	28 mm	1,198.2 mm	1,205.3 mm	1,212.4 mm

## Photometric data

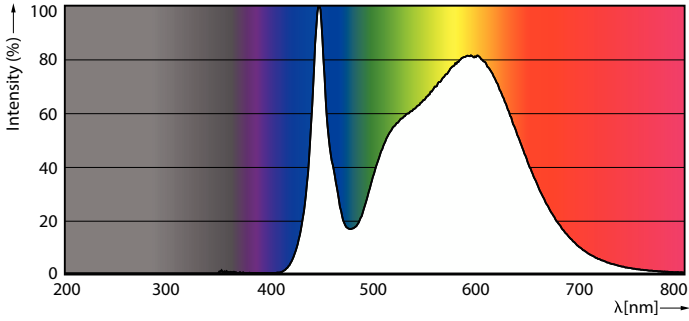


General uniform lighting - MAS LEDtube STD 1200mm 10.5W840 T8

Light Distribution Diagram - MAS LEDtube STD 1200mm 10.5W840 T8

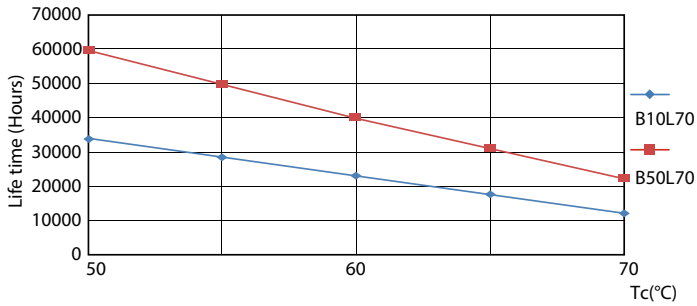
# MASTER LEDtube T8

## Photometric data

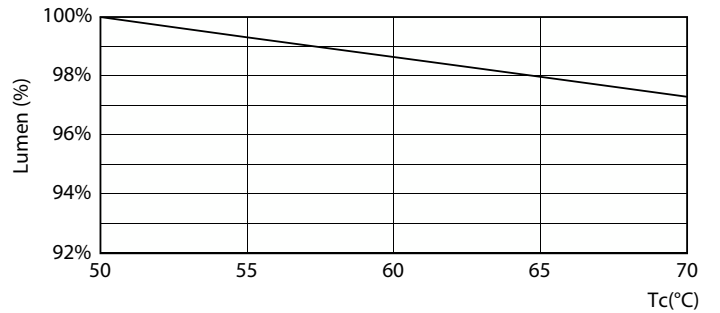


Spectral Power Distribution Colour - MAS LEDtube STD 1200mm 10.5W840 T8

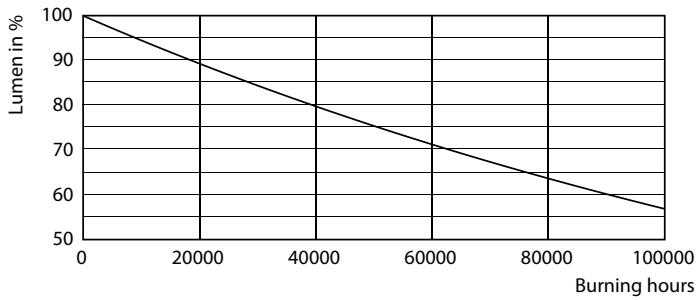
## Lifetime



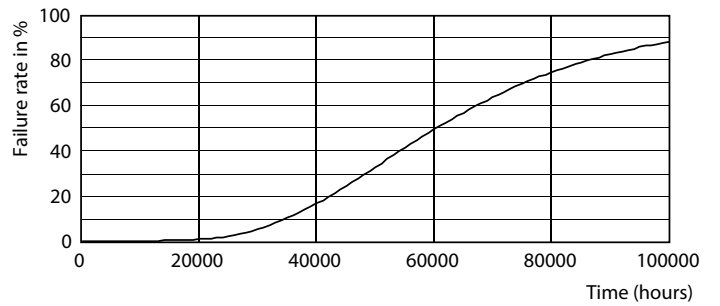
LEDtube 60K 5070 LifetimeVsTc-LED



Lumen Maintenance Diagram - MAS LEDtube STD 1200mm 10.5W840 T8



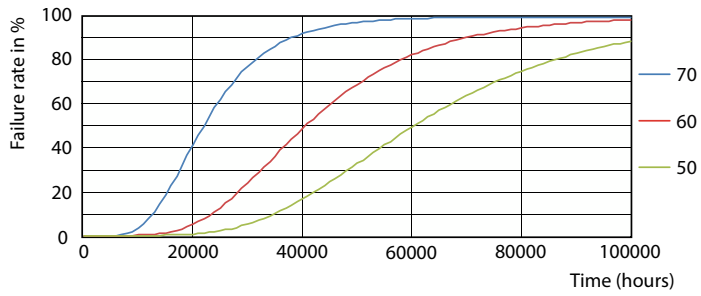
Lumen Maintenance Diagram - MAS LEDtube STD 1200mm 10.5W840 T8



Life Expectancy Diagram

# MASTER LEDtube T8

## Lifetime



LEDtube 60K 5070 FailureRate-LED

