



# MASTER LED tube InstantFit HF T8



## MAS LEDtube HF 1500mm UO 24W830 T8

MASTER, LEDtube, T8, HF, 1500 mm, 24 W, 58W TL-D, 3000 K, 3500 lm, CRI 80, 75000 hour(s)

Philips MASTER LEDtube InstantFit T8 integrates a LED light source into a traditional fluorescent form factor. Its unique design creates a perfectly uniform visual appearance which cannot be distinguished from traditional fluorescent. Philips MASTER LEDtube InstantFit T8 is the ideal solution for customers who have higher light requirements and want to maximize value over lifetime. Full energy savings & longer lifetime result in attractive payback times and TCO benefits.

### Warnings and Safety

· NOTES: The overall energy efficiency and light distribution of any installation that uses these lamps are determined by the design of the installation.

### Product data

General Information		Luminous Flux	
Cap-Base	G13 Rotatable end-cap	Luminous Flux	3,500 lm
Nominal lifetime	75,000 hour(s)	Color Designation	White (WH)
Switching Cycle	50,000	Correlated Color Temperature (Nom)	3000 K
Lighting Technology	LEDtube	Luminous Efficacy (rated) (Nom)	145 lm/W
Flux measurement reference	Sphere	Color Consistency	<6
Warranty period	5 years	Color rendering index (CRI)	80
		LLMF At End Of Nominal Lifetime (Nom)	70 %
		Photobiological safety according to EN 62471	RG0
Light Technical		Operating and Electrical	
Color Code	830 [CCT of 3000K]	Line Frequency	20000-75000 Hz
Beam Angle (Nom)	160 degree(s)		

# MASTER LED tube InstantFit HF T8

Input Frequency	20000-75000 Hz
Power Consumption	24 W
Lamp Current (Max)	750 mA
Lamp Current (Min)	300 mA
Starting Time (Nom)	0.5 s
Warm-up time to 60% light	0.5 s
Power Factor (Fraction)	0.9
Voltage (Nom)	30-80 V
LED alternative to fluorescent lamp power	58W TL-D
Inrush current at mains	-
Max. lamp no. on MCB B type 10A - Mains	-
Max. lamp no. on MCB B type 10A – EM ballast without Compensation Capacitor.	-
Max. lamp no. on MCB B type 10A – EM ballast with Compensation Capacitor.	-
Max. lamp no. on MCB B type 16A - Mains	-
Max. lamp no. on MCB B type 16A – EM ballast without Compensation Capacitor.	-
Max. lamp no. on MCB B type 16A – EM ballast with Compensation Capacitor.	-
Ballast Compatibility	HF

## Temperature

T-Case Maximum (Nom)	55 °C
----------------------	-------

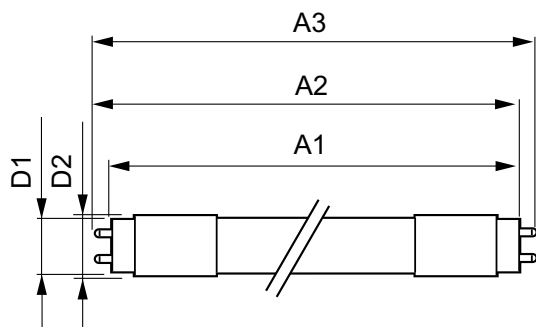
## Controls and Dimming

Dimmable	Yes - Check ballast compatibility
----------	-----------------------------------

## Mechanical and Housing

Bulb Finish	Frosted
Bulb Material	Plastic
Product Length	1,500 mm

## Dimensional drawing



Bulb Shape	T8
Net Weight (Piece)	0.280 kg

## Approval and Application

Energy Efficiency Class	D
Energy Saving Product	Yes
Approval Marks	RoHS compliance CE marking KEMA Keur certificate ENEC certificate
Energy Consumption kWh/1000 h	24 kWh
EPREL Registration Number	1165506
CE mark	Yes
EU RoHS compliant	Yes
Flickering value (PstLM) - Flickering value as per EN 61000-3-3	0.5
Stroboscopic effect visibility measure (SVM)	0.2
Ambient temperature range	-20 °C to 45 °C

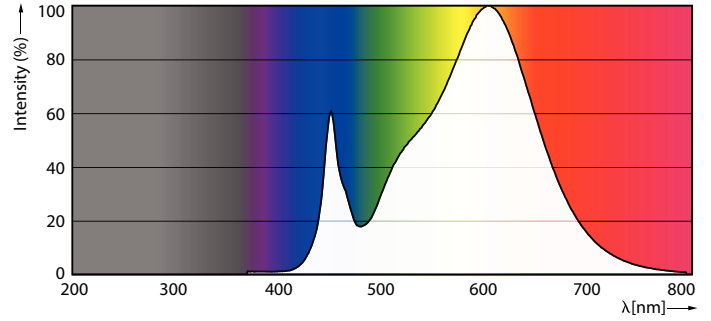
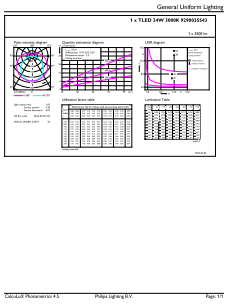
## Product Data

Order product name	MAS LEDtube HF 1500mm UO 24W830 T8
Full product name	MAS LEDtube HF 1500mm UO 24W830 T8
Full product code	871951446706400
Order code	929003554302
Material Nr. (12NC)	929003554302
Numerator - Quantity Per Pack	1
EAN/UPC - Product/Case	8719514467064
Numerator - Packs per outer box	20
EAN/UPC - Case	8719514467071

Product	D1	D2	A1	A2	A3
MAS LEDtube HF 1500mm UO 24W830 T8	25.8 mm	28 mm	1,498.8 mm	1,505.9 mm	1,513 mm

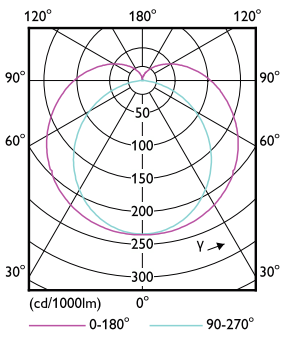
# MASTER LED tube InstantFit HF T8

## Photometric data



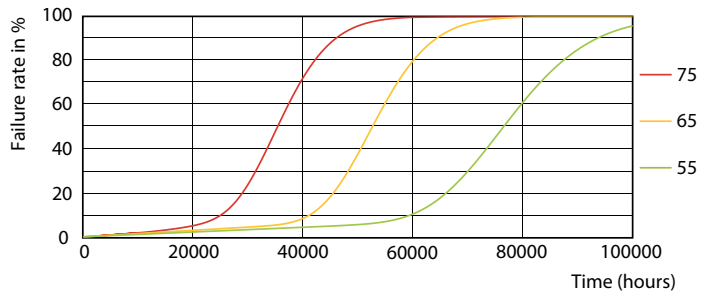
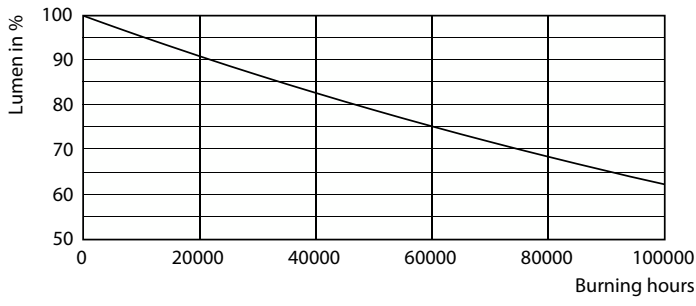
General uniform lighting - MAS LEDtube HF 1500mm UO 24W830 T8

Spectral Power Distribution Colour - MAS LEDtube HF 1500mm UO 24W830 T8



Light Distribution Diagram - MAS LEDtube HF 1500mm UO 24W830 T8

## Lifetime

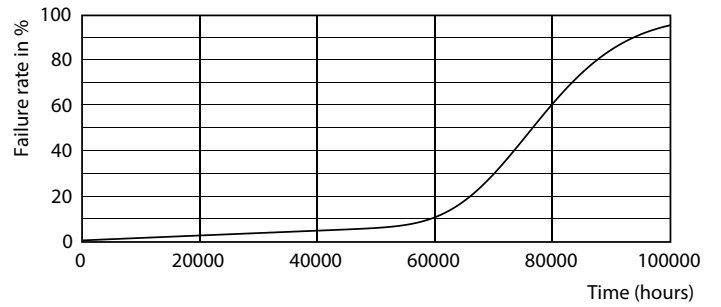


Lumen Maintenance Diagram - MAS LEDtube HF 1500mm UO 24W830 T8

LEDtube-75K-5575-FailureRate-LED

# MASTER LED tube InstantFit HF T8

## Lifetime



Lumen Maintenance Diagram - MAS LEDtube HF 1500mm UO 24W830 T8

Life Expectancy Diagram



LifetimeVsTc

